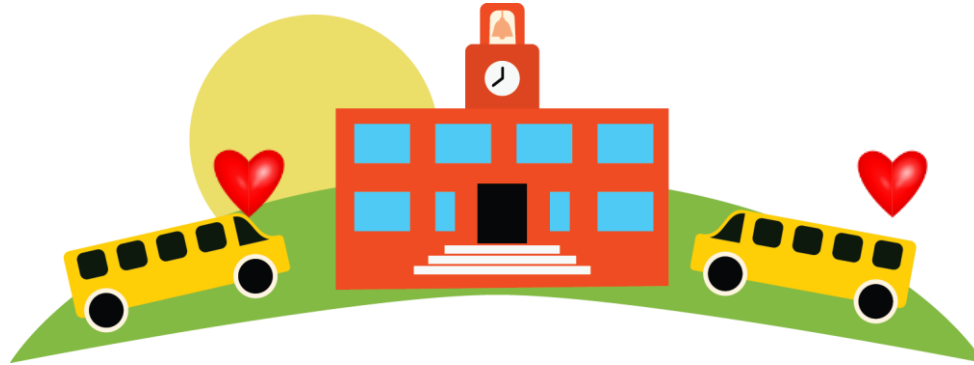


# USDA FNS Programs: Strengthening the Communication Lines to Increase Effective and Successful Partnerships

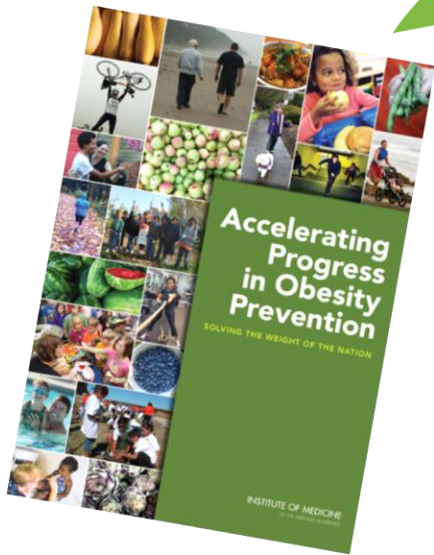


Kim Frinzell, RD  
Nutrition Education Administrator  
Nutrition Services Division  
California Department of  
Education  
[kfrinzell@cde.ca.gov](mailto:kfrinzell@cde.ca.gov)





# Schools the Heart of Health



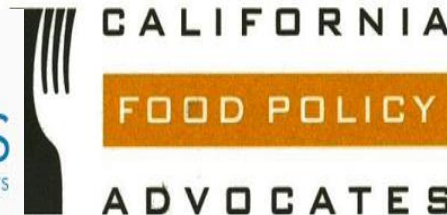
# Healthy, Hunger-Free Kids Act (HHFKA) 2010



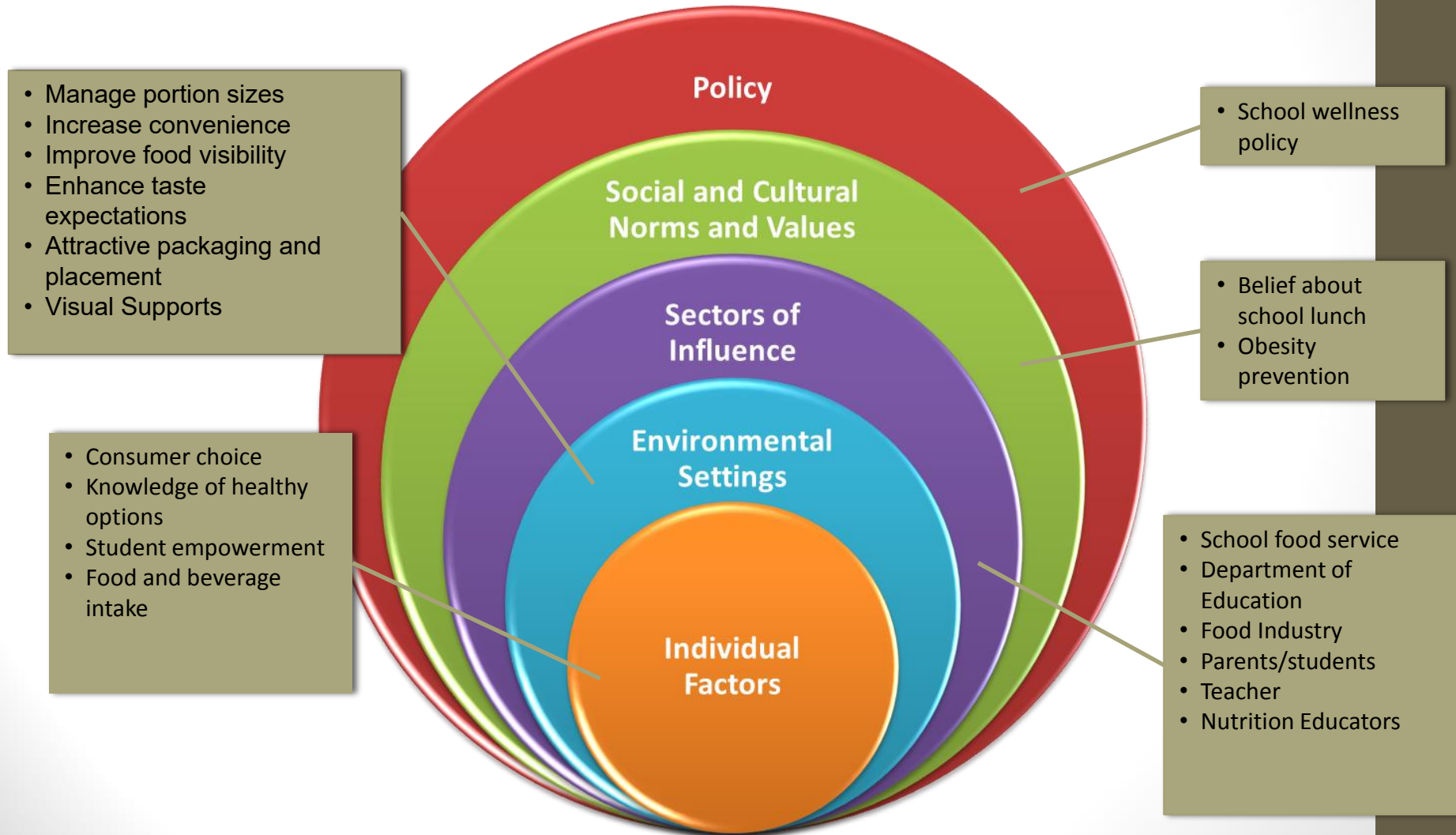
# Smarter Lunchrooms Movement of California (SLM of CA) Collaborative



This Collaborative is comprised of the following organizations:



# Where does SLM fit into the Social Ecological Model?



# SLM at the 2015 Childhood Obesity Conference

- **Pre Conference Session:** Smarter Lunchrooms: How the Collective Impact Results in a National Movement-Monday June 29, 2015
- **Conference Session:** A Whole New Look at School Lunch: Perceptions Matter!



# Farm to School

[www.cafarmtofork.com](http://www.cafarmtofork.com)  
[cafarmtofork@cdfa.ca.gov](mailto:cafarmtofork@cdfa.ca.gov)



# Local School Wellness Policies



**Stronger focus on nutrition  
promotion and marketing**



**More implementation and  
reporting at the school level!**

# California Local School Wellness Policy Collaborative



The California Local School Wellness Policy (LSWP) Collaborative brings together state leaders committed to improving student wellness and academic success. By leveraging their collective resources, the collaborative members are building a statewide infrastructure that supports schools in updating and implementing their Local School Wellness Policies.



## Vision:

We inspire school communities to take their wellness policies from paper to practice.



## Mission:

We are a catalyst for school communities and stakeholders to implement highly effective local school wellness policies in California schools to support student health and academic achievement.

## Collaborative Goals:

### Build broad support

for local school wellness policy implementation, among schools, after school programs, health departments, elected officials and community stakeholders; and

### Assist districts

in revising their policies to meet Child Nutrition Reauthorization Act/Healthy Hunger Free Kids Act of 2010 requirements and strengthening their skills and commitment to implement local priorities and monitor adopted local school wellness policies.



For more information about the California Local School Wellness (LSWP) Collaborative and to access resources, please visit our web page at: [TeamCaliforniaForHealthyKids.org/School-Wellness](http://TeamCaliforniaForHealthyKids.org/School-Wellness)



## Partner Organizations

## California Local School Wellness Policy Collaborative

Alliance for a Healthier Generation

California Action for Healthy Kids

California Department of Education – Nutrition Services, Team California for Healthy Kids

California Department of Public Health – Network for a Healthy California

California Project LEAN

California Association for Health, Physical Education, Recreation and Dance

California School Boards Association

California School Nurses Organization

California School Nutrition Association

California State Parent Teacher Association

Center for Collaborative Solutions

UC Davis Center for Nutrition in Schools

Dairy Council of California

HealthCorps

Sacramento City Unified School District

UC CalFresh Nutrition Education Program

## LOCAL SCHOOL WELLNESS POLICY ADMINISTRATIVE REVIEW TOOLKIT

[HOME](#) > [SCHOOL WELLNESS POLICY](#) > [CALIFORNIA LOCAL SCHOOL WELLNESS POLICY COLLABORATIVE](#) > [LOCAL SCHOOL WELLNESS POLICY ADMINISTRATIVE REVIEW TOOLKIT](#)

### The California Local School Wellness Policy (LSWP) Collaborative has compiled these tools for the LSWP part of the Administrative Review (AR).

Current Copy of the local school wellness policy to address the LSWP-AR Question 1000 (documentation such as a hard copy of the policy or link to board policy.)

- [FNS Comparison Chart](#) (PDF) - LSWP requirements in Healthy, Hunger-Free Kids Act of 2010
- [Letter to County and District Superintendents and Charter School Administrators from Tom Torlakson, State Superintendent of Public Instruction](#) about 2013 Administrative Review Requirements

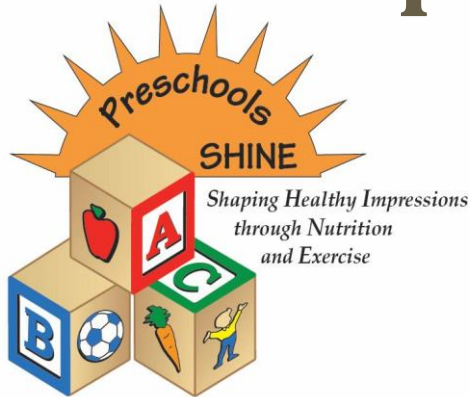
**How Does Public Know About the LSWP - AR Question 1001** (links to board policy or wellness policy section, distribution packet, brochure, posters, flyers, articles in newsletters, emails, loudspeaker announcements, displays or presentations at back to school nights and other school events, in service education)

[California Local School  
Wellness Policy  
Collaborative Members](#)

[California Local School  
Wellness Policy  
Collaborative Outreach  
Resources](#)

[Local School Wellness Policy  
Administrative Review  
Toolkit](#)

# Preschools Shaping Healthy Impressions through Nutrition and Exercise (SHINE)



1. CACFP Participation
2. Meal Quality
3. Nutrition Education
4. Mealtime Environment
5. Garden-Enhanced Nutrition Education
6. Wellness Policies
7. Physical Activity
8. Professional Development
9. Partnerships
10. Leadership Team

Thank you  
for providing  
us with 2  
snakes every  
day, because  
I get hungry  
a lot so I'm  
thankful.

Thanks,  
Kaydence

**Kim Frinzell**

**916-445-6820**

**[kfrinzell@cde.ca.gov](mailto:kfrinzell@cde.ca.gov)**