

# AUXILIARY TABLES\*

## Table of Contents

Summary charts and graphs reflective of the payment levels, rates and funding for various CDSS local assistance programs.

Public Assistance Programs Average Monthly Grants.....	1
SSI/SSP Payment Standards.....	3
CAPI Payment Standards .....	9
CalWORKs MAP Levels.....	15
CalWORKs MAP History.....	17
Historical CalWORKs and TANF Funding Chart.....	19
Funding Reconciliation for CalWORKs, the TANF Block Grant and MOE .....	22
IHSS Individual Provider Caseload and Hours by County .....	24
IHSS Wage, Tax, Benefit and Administrative Rates for Individual Provider Mode .....	26
IHSS County MOE: Shift to GF .....	30
Continuum of Care Reform (CCR) Summary .....	31

---

\*Please refer to the first tab titled "[Acronyms](#)" for a full description of acronyms.

***This page is intentionally blank***

## Public Assistance Programs Average Monthly Grants\*

The following are the average monthly grants in FY 2015-16 and FY 2016-17 for various public assistance programs.

Programs		2016 May Revision		2016-17 Governor's Budget	
		FY 2015-16	FY 2016-17	FY 2015-16	FY 2016-17
CalWORKs-All Family & Two-Parent	/ Case	\$513.67	\$514.43	\$500.89	\$497.35
	/ Person	\$213.81	\$216.31	\$208.87	\$209.40
AFDC-FC <sup>1</sup>	/ Child	\$2,244.70	\$2,306.65	\$2,244.70	\$2,311.14
Extended FC <sup>2</sup>	/ Non-Minor	\$1,924.59	\$1,977.71	\$1,924.59	\$1,981.58
AAP <sup>2</sup>	/ Child	\$987.27	\$1,014.52	\$987.27	\$1,016.50
Extended FC-AAP <sup>2</sup>	/ Non-Minor	\$1,055.77	\$1,084.90	\$1,055.77	\$1,087.02
Kin-GAP	/ Child	\$739.67	\$760.09	\$739.67	\$761.57
Extended FC-Kin-GAP	/ Non-Minor	\$809.00	\$831.33	\$809.00	\$832.95
Federal Kin-GAP <sup>2</sup>	/ Child	\$813.26	\$835.71	\$813.26	\$837.33
Extend FC-Fed-GAP <sup>2</sup>	/ Non-Minor	\$890.66	\$915.24	\$890.66	\$917.02
SSI/SSP <sup>3</sup>	Aged	\$512.80	\$515.20	\$511.94	\$519.23
	Blind	\$662.56	\$665.56	\$661.45	\$669.79
	Disabled	\$662.10	\$664.37	\$662.36	\$670.30
CAPI <sup>4</sup>	/ Person	\$765.64	\$770.31	\$763.85	\$771.79
California Veterans Cash Benefit	/ Person	\$157.18	\$161.98	\$157.18	\$159.51
Refugees <sup>5</sup>	/ Person	\$327.91	\$331.43	\$309.39	\$309.39
CalFresh Food Benefit <sup>6</sup>	Annual Sum	\$7,526,543,050	\$7,707,022,673	\$8,006,488,844	\$8,455,838,680
	/ Household	\$293.21	\$293.21	\$303.99	\$303.99
	/ Person	\$140.04	\$140.04	\$144.35	\$144.35
CFAP	Annual Sum	\$77,252,000	\$80,265,000	\$74,964,000	\$78,455,000
	/ Household	\$306.30	\$306.39	\$298.26	\$300.84
	/ Person	\$131.43	\$131.27	\$129.62	\$130.67
IHSS <sup>7</sup>	/ Case	\$1,340.97	\$1,387.98	\$1,291.96	\$1,304.42

<sup>1</sup>The per child grant represents the foster family home/foster family agency/group home combined average grant. These total expenditures will vary from the amounts in the Detail Tables, since the LRF portions of the Detail Tables remain at FY 2011-12 levels.

<sup>2</sup>The total expenditures will vary from the amounts in the Detail Tables, since the LRF portions of the Detail Tables remain at FY 2011-12 levels.

<sup>3</sup>The SSI/SSP average grant includes Federal COLA and 2017 State COLA.

<sup>4</sup>The CAPI is the weighted average grant for base and extended CAPI.

<sup>5</sup>The Refugees average grant for FY 2015-16 and FY 2016-17 includes the March 1, 2014 five percent grant increase, the April 1, 2015 five percent grant increase and a 1.43 percent grant increase that will implement on October 1, 2016.

<sup>6</sup>The CalFresh federal benefits are shown for informational purposes, but not reflected in the CDSS budget.

<sup>7</sup>The IHSS cost per case represents basic service costs of all IHSS delivery modes with the impact of SB 3 minimum wage increase starting January 1, 2017.

\*Please refer to the first tab titled "[Acronyms](#)" for a full description of acronyms.

***This page is intentionally blank***

# SSI/SSP Payment Standards\*

Effective January 1, 2015

CPI: 1.7%  
CNI: N/A

	INDEPENDENT LIVING			REDUCED NEEDS		
	RESIDING IN OWN HOUSEHOLD			HOUSEHOLD OF ANOTHER WITH IN-KIND ROOM & BOARD		
	TOTAL	SSI	SSP	TOTAL	SSI	SSP
<b><u>INDIVIDUAL:</u></b>						
AGED OR DISABLED	<b>\$889.40</b>	\$733.00	\$156.40	<b>\$648.50</b>	\$488.67	\$159.83
- without cooking facilities (RMA) <sup>1</sup>	<b>\$973.40</b>	\$733.00	\$240.40			
BLIND	<b>\$944.40</b>	\$733.00	\$211.40	<b>\$703.50</b>	\$488.67	\$214.83
DISABLED MINOR						
- living with parent(s)	<b>\$796.40</b>	\$733.00	\$63.40	<b>\$555.50</b>	\$488.67	\$66.83
- living with non-parent relative/guardian						
<b><u>COUPLE:</u></b>						
AGED OR DISABLED	<b>\$1,496.20</b>	\$1,100.00	\$396.20	<b>\$1,134.67</b>	\$733.34	\$401.33
- per couple						
- without cooking facilities (RMA) <sup>1</sup>	<b>\$1,664.20</b>	\$1,100.00	\$564.20			
BLIND						
- per couple	<b>\$1,643.20</b>	\$1,100.00	\$543.20	<b>\$1,281.67</b>	\$733.34	\$548.33
BLIND/AGED OR DISABLED						
- per couple	<b>\$1,587.20</b>	\$1,100.00	\$487.20	<b>\$1,225.67</b>	\$733.34	\$492.33

TITLE XIX MEDICAL FACILITY

	Individual	Couple
Total	\$50	\$100
SSI	\$30	\$60
SSP	\$20	\$40

<sup>1</sup> RMA - \$84 Individual; \$168 Couple

\*Please refer to the first tab titled "[Acronyms](#)" for a full description of acronyms.

# SSI/SSP Payment Standards\*

Effective January 1, 2015

CPI: 1.7%  
CNI: N/A

	NON-MEDICAL OUT-OF-HOME CARE <sup>2</sup>					
	HOUSEHOLD OF RELATIVE WITH IN-KIND ROOM & BOARD			IN LICENSED FACILITY OR HOUSEHOLD OF RELATIVE WITHOUT IN-KIND ROOM & BOARD		
	TOTAL	SSI	SSP	TOTAL	SSI	SSP
<b><u>INDIVIDUAL:</u></b>						
AGED OR DISABLED - without cooking facilities (RMA) <sup>1</sup>	<b>\$895.67</b>	\$488.67	\$407.00	<b>\$1,145.00</b>	\$733.00	\$412.00
BLIND	<b>\$895.67</b>	\$488.67	\$407.00	<b>\$1,145.00</b>	\$733.00	\$412.00
DISABLED MINOR - living with parent(s) - living with non-parent relative/guardian	<b>\$895.67</b>	\$488.67	\$407.00	<b>\$1,145.00</b>	\$733.00	\$412.00
<b><u>COUPLE:</u></b>						
AGED OR DISABLED - per couple - without cooking facilities (RMA) <sup>1</sup>	<b>\$1,779.00</b>	\$733.34	\$1,045.66	<b>\$2,290.00</b>	\$1,100.00	\$1,190.00
BLIND - per couple	<b>\$1,779.00</b>	\$733.34	\$1,045.66	<b>\$2,290.00</b>	\$1,100.00	\$1,190.00
BLIND/AGED OR DISABLED - per couple	<b>\$1,779.00</b>	\$733.34	\$1,045.66	<b>\$2,290.00</b>	\$1,100.00	\$1,190.00

<sup>1</sup>RMA - \$84 Individual; \$168 Couple

<sup>2</sup>Non-Medical Out-Of-Home Care:

Personal and Incidental Needs Maximum:	\$231	Minimum:	\$131
Care and Supervision Maximum:	\$522	Minimum:	\$422
Room and Board:	\$492		

\*Please refer to the first tab titled "[Acronyms](#)" for a full description of acronyms.

# SSI/SSP Payment Standards\*

Effective January 1, 2016

CPI: 0%  
CNI: N/A

	INDEPENDENT LIVING			REDUCED NEEDS		
	RESIDING IN OWN HOUSEHOLD			HOUSEHOLD OF ANOTHER WITH IN-KIND ROOM & BOARD		
	TOTAL	SSI	SSP	TOTAL	SSI	SSP
<b><u>INDIVIDUAL:</u></b>						
AGED OR DISABLED - without cooking facilities (RMA) <sup>1</sup>	<b>\$889.40</b>	\$733.00	\$156.40	<b>\$648.50</b>	\$488.67	\$159.83
BLIND	<b>\$973.40</b>	\$733.00	\$240.40	<b>\$703.50</b>	\$488.67	\$214.83
DISABLED MINOR - living with parent(s) - living with non-parent relative/guardian	<b>\$944.40</b>	\$733.00	\$211.40	<b>\$703.50</b>	\$488.67	\$214.83
	<b>\$796.40</b>	\$733.00	\$63.40	<b>\$555.50</b>	\$488.67	\$66.83
<b><u>COUPLE:</u></b>						
AGED OR DISABLED - per couple - without cooking facilities (RMA) <sup>1</sup>	<b>\$1,496.20</b>	\$1,100.00	\$396.20	<b>\$1,134.67</b>	\$733.34	\$401.33
BLIND - per couple	<b>\$1,664.20</b>	\$1,100.00	\$564.20	<b>\$1,281.67</b>	\$733.34	\$548.33
BLIND/AGED OR DISABLED - per couple	<b>\$1,643.20</b>	\$1,100.00	\$543.20	<b>\$1,281.67</b>	\$733.34	\$548.33
	<b>\$1,587.20</b>	\$1,100.00	\$487.20	<b>\$1,225.67</b>	\$733.34	\$492.33

TITLE XIX MEDICAL FACILITY

	Individual	Couple
Total	\$50	\$100
SSI	\$30	\$60
SSP	\$20	\$40

<sup>1</sup>RMA - \$84 Individual; \$168 Couple

\*Please refer to the first tab titled "[Acronyms](#)" for a full description of acronyms.

# SSI/SSP Payment Standards\*

Effective January 1, 2016

CPI: 0%  
CNI: N/A

	NON-MEDICAL OUT-OF-HOME CARE <sup>2</sup>					
	HOUSEHOLD OF RELATIVE WITH IN-KIND ROOM & BOARD			IN LICENSED FACILITY OR HOUSEHOLD OF RELATIVE WITHOUT IN-KIND ROOM & BOARD		
	TOTAL	SSI	SSP	TOTAL	SSI	SSP
<b><u>INDIVIDUAL:</u></b>						
AGED OR DISABLED - without cooking facilities (RMA) <sup>1</sup>	<b>\$895.67</b>	\$488.67	\$407.00	<b>\$1,145.00</b>	\$733.00	\$412.00
BLIND	<b>\$895.67</b>	\$488.67	\$407.00	<b>\$1,145.00</b>	\$733.00	\$412.00
DISABLED MINOR - living with parent(s) - living with non-parent relative/guardian	<b>\$895.67</b>	\$488.67	\$407.00	<b>\$1,145.00</b>	\$733.00	\$412.00
<b><u>COUPLE:</u></b>						
AGED OR DISABLED - per couple - without cooking facilities (RMA) <sup>1</sup>	<b>\$1,779.00</b>	\$733.34	\$1,045.66	<b>\$2,290.00</b>	\$1,100.00	\$1,190.00
BLIND - per couple	<b>\$1,779.00</b>	\$733.34	\$1,045.66	<b>\$2,290.00</b>	\$1,100.00	\$1,190.00
BLIND/AGED OR DISABLED - per couple	<b>\$1,779.00</b>	\$733.34	\$1,045.66	<b>\$2,290.00</b>	\$1,100.00	\$1,190.00

<sup>1</sup>RMA - \$84 Individual; \$168 Couple

<sup>2</sup>Non-Medical Out-Of-Home Care:

Personal and Incidental Needs Maximum:	\$231	Minimum:	\$131
Care and Supervision Maximum:	\$522	Minimum:	\$422
Room and Board:	\$492		

\*Please refer to the first tab titled "[Acronyms](#)" for a full description of acronyms.



# SSI/SSP Payment Standards\*

Effective January 1, 2017

CPI: 0% (Estimated)  
CNI: 2.76% (Estimated)

	INDEPENDENT LIVING			REDUCED NEEDS		
	RESIDING IN OWN HOUSEHOLD			HOUSEHOLD OF ANOTHER WITH IN-KIND ROOM & BOARD		
	TOTAL	SSI	SSP	TOTAL	SSI	SSP
<b><u>INDIVIDUAL:</u></b>						
AGED OR DISABLED	<b>\$893.72</b>	\$733.00	\$160.72	<b>\$652.91</b>	\$488.67	\$164.24
- without cooking facilities (RMA) <sup>1</sup>	<b>\$980.04</b>	\$733.00	\$247.04			
BLIND	<b>\$950.23</b>	\$733.00	\$217.23	<b>\$709.43</b>	\$488.67	\$220.76
DISABLED MINOR						
- living with parent(s)	<b>\$798.15</b>	\$733.00	\$65.15	<b>\$557.34</b>	\$488.67	\$68.67
- living with non-parent relative/guardian						
<b><u>COUPLE:</u></b>						
AGED OR DISABLED	<b>\$1,507.14</b>	\$1,100.00	\$407.14	<b>\$1,145.75</b>	\$733.34	\$412.41
- per couple						
- without cooking facilities (RMA) <sup>1</sup>	<b>\$1,679.77</b>	\$1,100.00	\$579.77			
BLIND						
- per couple	<b>\$1,658.19</b>	\$1,100.00	\$558.19	<b>\$1,296.80</b>	\$733.34	\$563.46
BLIND/AGED OR DISABLED						
- per couple	<b>\$1,600.65</b>	\$1,100.00	\$500.65	<b>\$1,239.26</b>	\$733.34	\$505.92

TITLE XIX MEDICAL FACILITY

	Individual	Couple
Total	\$51	\$101
SSI	\$30	\$60
SSP	\$21	\$41

<sup>1</sup>RMA - \$84 Individual; \$168 Couple

\*Please refer to the first tab titled "[Acronyms](#)" for a full description of acronyms.

# SSI/SSP Payment Standards\*

Effective January 1, 2017

CPI: 0% (Estimated)  
CNI: 2.76% (Estimated)

	NON-MEDICAL OUT-OF-HOME CARE <sup>2</sup>					
	HOUSEHOLD OF RELATIVE WITH IN-KIND ROOM & BOARD			IN LICENSED FACILITY OR HOUSEHOLD OF RELATIVE WITHOUT IN-KIND ROOM & BOARD		
	TOTAL	SSI	SSP	TOTAL	SSI	SSP
<b><u>INDIVIDUAL:</u></b>						
AGED OR DISABLED - without cooking facilities (RMA) <sup>1</sup>	<b>\$906.90</b>	\$488.67	\$418.23	<b>\$1,156.37</b>	\$733.00	\$423.37
BLIND	<b>\$906.90</b>	\$488.67	\$418.23	<b>\$1,156.37</b>	\$733.00	\$423.37
DISABLED MINOR - living with parent(s) - living with non-parent relative/guardian	<b>\$906.90</b>	\$488.67	\$418.23	<b>\$1,156.37</b>	\$733.00	\$423.37
<b><u>COUPLE:</u></b>						
AGED OR DISABLED - per couple - without cooking facilities (RMA) <sup>1</sup>	<b>\$1,807.86</b>	\$733.34	\$1,074.52	<b>\$2,312.74</b>	\$1,100.00	\$1,212.74
BLIND - per couple	<b>\$1,807.96</b>	\$733.34	\$1,074.52	<b>\$2,312.74</b>	\$1,100.00	\$1,212.74
BLIND/AGED OR DISABLED - per couple	<b>\$1,807.96</b>	\$733.34	\$1,074.52	<b>\$2,312.74</b>	\$1,100.00	\$1,212.74

<sup>1</sup>RMA - \$84 Individual; \$168 Couple

<sup>2</sup>Non-Medical Out-Of-Home Care:

Personal and Incidental Needs Maximum:	\$233	Minimum:	\$132
Care and Supervision Maximum:	\$527	Minimum:	\$426
Room and Board:	\$497		

\*Please refer to the first tab titled "[Acronyms](#)" for a full description of acronyms.

# CAPI Payment Standards\*

Effective January 1, 2015

CPI: 1.7%  
CNI: N/A

	INDEPENDENT LIVING			REDUCED NEEDS		
	RESIDING IN OWN HOUSEHOLD			HOUSEHOLD OF ANOTHER WITH IN-KIND ROOM & BOARD		
<b><u>INDIVIDUAL:</u></b>	TOTAL CAPI		TOTAL SSI/SSP	TOTAL CAPI		TOTAL SSI/SSP
AGED OR DISABLED - without cooking facilities (RMA) <sup>1</sup>	<b>\$879.40</b>		\$889.40	<b>\$638.50</b>		\$648.50
	<b>\$963.40</b>		\$973.40			
BLIND	<b>\$934.40</b>		\$944.40	<b>\$693.50</b>		\$703.50
DISABLED MINOR - living with parent(s)	<b>\$786.40</b>		\$796.40	<b>\$545.50</b>		\$555.50
- living with non-parent relative or non-relative guardian						
<b><u>COUPLE:</u></b>	TOTAL CAPI	ONE CAPI, ONE SSI	TOTAL SSI/SSP	TOTAL CAPI	ONE CAPI, ONE SSI	TOTAL SSI/SSP
AGED OR DISABLED - per couple	<b>\$1,476.20</b>	\$1,486.20	\$1,496.20	<b>\$1,114.67</b>	\$1,124.67	\$1,134.67
- without cooking facilities (RMA) <sup>1</sup>	<b>\$1,644.20</b>	\$1,654.20	\$1,664.20			
BLIND - per couple	<b>\$1,623.20</b>	\$1,633.20	\$1,643.20	<b>\$1,261.67</b>	\$1,271.67	\$1,281.67
BLIND/AGED OR DISABLED - per couple	<b>\$1,567.20</b>	\$1,577.20	\$1,587.20	<b>\$1,205.67</b>	\$1,215.67	\$1,225.67

TITLE XIX MEDICAL FACILITY

	Individual	Couple
Total CAPI	\$40	\$80
SSI/SSP	\$50	\$100

<sup>1</sup>RMA - \$84 Individual; \$168 Couple

Note: Based on W&I section 18941, CAPI benefits are equivalent to those of the SSI/SSP program, except that the monthly payment is reduced by \$10 per individual and \$20 per couple since CAPI recipients are not subject to SSI cash-out and therefore eligible to apply for food benefits through CFAP.

\*Please refer to the first tab titled "[Acronyms](#)" for a full description of acronyms.

**CAPI Payment Standards\***

Effective January 1, 2015

CPI: 1.7%  
CNI: N/A

	NON-MEDICAL OUT-OF-HOME CARE					
	HOUSEHOLD OF RELATIVE WITH IN-KIND ROOM & BOARD			IN LICENSED FACILITY OR HOUSEHOLD OF RELATIVE WITHOUT IN-KIND ROOM & BOARD		
<b><u>INDIVIDUAL:</u></b>	<b>TOTAL CAPI</b>		<b>TOTAL SSI/SSP</b>	<b>TOTAL CAPI</b>		<b>TOTAL SSI/SSP</b>
AGED OR DISABLED - without cooking facilities (RMA) <sup>1</sup>	<b>\$885.67</b>		\$895.67	<b>\$1,135.00</b>		\$1,145.00
BLIND	<b>\$885.67</b>		\$895.67	<b>\$1,135.00</b>		\$1,145.00
DISABLED MINOR - living with parent(s) - living with non-parent relative or non-relative guardian	<b>\$885.67</b>		\$895.67	<b>\$1,135.00</b>		\$1,145.00
<b><u>COUPLE:</u></b>	<b>TOTAL CAPI</b>	<b>ONE CAPI, ONE SSI</b>	<b>TOTAL SSI/SSP</b>	<b>TOTAL CAPI</b>	<b>ONE CAPI, ONE SSI</b>	<b>TOTAL SSI/SSP</b>
AGED OR DISABLED - per couple - without cooking facilities (RMA) <sup>1</sup>	<b>\$1,759.00</b>	\$1,769.00	\$1,779.00	<b>\$2,270.00</b>	\$2,280.00	\$2,290.00
BLIND - per couple	<b>\$1,759.00</b>	\$1,769.00	\$1,779.00	<b>\$2,270.00</b>	\$2,280.00	\$2,290.00
BLIND/AGED OR DISABLED - per couple	<b>\$1,759.00</b>	\$1,769.00	\$1,779.00	<b>\$2,270.00</b>	\$2,280.00	\$2,290.00

<sup>1</sup>RMA - \$84 Individual; \$168 Couple

Note: Based on W&I section 18941, CAPI benefits are equivalent to those of the SSI/SSP program, except that the monthly payment is reduced by \$10 per individual and \$20 per couple since CAPI recipients are not subject to SSI cash-out and therefore eligible to apply for food benefits through CFAP.

\*Please refer to the first tab titled "[Acronyms](#)" for a full description of acronyms.

# CAPI Payment Standards\*

Effective January 1, 2016

CPI: 0%  
CNI: N/A

	INDEPENDENT LIVING			REDUCED NEEDS		
	RESIDING IN OWN HOUSEHOLD			HOUSEHOLD OF ANOTHER WITH IN-KIND ROOM & BOARD		
<b><u>INDIVIDUAL:</u></b>	TOTAL CAPI		TOTAL SSI/SSP	TOTAL CAPI		TOTAL SSI/SSP
AGED OR DISABLED - without cooking facilities (RMA) <sup>1</sup>	<b>\$879.40</b>		\$889.40	<b>\$638.50</b>		\$648.50
	<b>\$963.40</b>		\$973.40			
BLIND	<b>\$934.40</b>		\$944.40	<b>\$693.50</b>		\$703.50
DISABLED MINOR - living with parent(s)	<b>\$786.40</b>		\$796.40	<b>\$545.50</b>		\$555.50
- living with non-parent relative or non-relative guardian						
<b><u>COUPLE:</u></b>	TOTAL CAPI	ONE CAPI, ONE SSI	TOTAL SSI/SSP	TOTAL CAPI	ONE CAPI, ONE SSI	TOTAL SSI/SSP
AGED OR DISABLED - per couple	<b>\$1,476.20</b>	\$1,486.20	\$1,496.20	<b>\$1,114.67</b>	\$1,124.67	\$1,134.67
- without cooking facilities (RMA) <sup>1</sup>	<b>\$1,644.20</b>	\$1,654.20	\$1,664.20			
BLIND - per couple	<b>\$1,623.20</b>	\$1,633.20	\$1,643.20	<b>\$1,261.67</b>	\$1,271.67	\$1,281.67
BLIND/AGED OR DISABLED - per couple	<b>\$1,567.20</b>	\$1,577.20	\$1,587.20	<b>\$1,205.67</b>	\$1,215.67	\$1,225.67

TITLE XIX MEDICAL FACILITY		
	Individual	Couple
Total CAPI	\$40	\$80
SSI/SSP	\$50	\$100

<sup>1</sup>RMA - \$84 Individual; \$168 Couple

Note: Based on W&I section 18941, CAPI benefits are equivalent to those of the SSI/SSP program, except that the monthly payment is reduced by \$10 per individual and \$20 per couple since CAPI recipients are not subject to SSI cash-out and therefore eligible to apply for food benefits through CFAP.

\*Please refer to the first tab titled "[Acronyms](#)" for a full description of acronyms.

**CAPI Payment Standards\***

Effective January 1, 2016

CPI: 0%  
CNI: N/A

	<b>NON-MEDICAL OUT-OF-HOME CARE</b>					
	HOUSEHOLD OF RELATIVE WITH IN-KIND ROOM & BOARD			IN LICENSED FACILITY OR HOUSEHOLD OF RELATIVE WITHOUT IN-KIND ROOM & BOARD		
<b><u>INDIVIDUAL:</u></b>	<b>TOTAL CAPI</b>		<b>TOTAL SSI/SSP</b>	<b>TOTAL CAPI</b>		<b>TOTAL SSI/SSP</b>
AGED OR DISABLED - without cooking facilities (RMA) <sup>1</sup>	<b>\$885.67</b>		\$895.67	<b>\$1,135.00</b>		\$1,145.00
BLIND	<b>\$885.67</b>		\$895.67	<b>\$1,135.00</b>		\$1,145.00
DISABLED MINOR - living with parent(s) - living with non-parent relative or non-relative guardian	<b>\$885.67</b>		\$895.67	<b>\$1,135.00</b>		\$1,145.00
<b><u>COUPLE:</u></b>	<b>TOTAL CAPI</b>	<b>ONE CAPI, ONE SSI</b>	<b>TOTAL SSI/SSP</b>	<b>TOTAL CAPI</b>	<b>ONE CAPI, ONE SSI</b>	<b>TOTAL SSI/SSP</b>
AGED OR DISABLED - per couple - without cooking facilities (RMA) <sup>1</sup>	<b>\$1,759.00</b>	\$1,769.00	\$1,779.00	<b>\$2,270.00</b>	\$2,280.00	\$2,290.00
BLIND - per couple	<b>\$1,759.00</b>	\$1,769.00	\$1,779.00	<b>\$2,270.00</b>	\$2,280.00	\$2,290.00
BLIND/AGED OR DISABLED - per couple	<b>\$1,759.00</b>	\$1,769.00	\$1,779.00	<b>\$2,270.00</b>	\$2,280.00	\$2,290.00

<sup>1</sup>RMA - \$84 Individual; \$168 Couple

Note: Based on W&I section 18941, CAPI benefits are equivalent to those of the SSI/SSP program, except that the monthly payment is reduced by \$10 per individual and \$20 per couple since CAPI recipients are not subject to SSI cash-out and therefore eligible to apply for food benefits through CFAP.

\*Please refer to the first tab titled "[Acronyms](#)" for a full description of acronyms.

# CAPI Payment Standards\*

Effective January 1, 2017

CPI: 0% (Estimated)  
CNI: 2.76% (Estimated)

	INDEPENDENT LIVING			REDUCED NEEDS		
	RESIDING IN OWN HOUSEHOLD			HOUSEHOLD OF ANOTHER WITH IN-KIND ROOM & BOARD		
<b><u>INDIVIDUAL:</u></b>	TOTAL CAPI		TOTAL SSI/SSP	TOTAL CAPI		TOTAL SSI/SSP
AGED OR DISABLED - without cooking facilities (RMA) <sup>1</sup>	<b>\$883.72</b>		\$893.72	<b>\$642.91</b>		\$652.91
	<b>\$970.04</b>		\$980.04			
BLIND DISABLED MINOR	<b>\$940.23</b>		\$950.23	<b>\$699.43</b>		\$709.43
- living with parent(s) - living with non-parent relative or non-relative guardian	<b>\$788.15</b>		\$798.15	<b>\$547.34</b>		\$557.34
<b><u>COUPLE:</u></b>	TOTAL CAPI	ONE CAPI, ONE SSI	TOTAL SSI/SSP	TOTAL CAPI	ONE CAPI, ONE SSI	TOTAL SSI/SSP
AGED OR DISABLED - per couple	<b>\$1,487.14</b>	\$1,497.14	\$1,507.14	<b>\$1,125.75</b>	\$1,135.75	\$1,145.75
- without cooking facilities (RMA) <sup>1</sup>	<b>\$1,659.77</b>	\$1,669.77	\$1,679.77			
BLIND - per couple	<b>\$1,638.19</b>	\$1,648.19	\$1,658.19	<b>\$1,276.80</b>	\$1,286.80	\$1,296.80
BLIND/AGED OR DISABLED - per couple	<b>\$1,580.65</b>	\$1,590.65	\$1,600.65	<b>\$1,219.36</b>	\$1,229.36	\$1,239.26

TITLE XIX MEDICAL FACILITY

	Individual	Couple
Total CAPI	\$41	\$81
SSI/SSP	\$51	\$101

<sup>1</sup>RMA - \$84 Individual; \$168 Couple

Note: Based on W&I section 18941, CAPI benefits are equivalent to those of the SSI/SSP program, except that the monthly payment is reduced by \$10 per individual and \$20 per couple since CAPI recipients are not subject to SSI cash-out and therefore eligible to apply for food benefits through CFAP.

\*Please refer to the first tab titled "[Acronyms](#)" for a full description of acronyms.

**CAPI Payment Standards\***

Effective January 1, 2017

CPI: 0% (Estimated)  
CNI: 2.76% (Estimated)

	<b>NON-MEDICAL OUT-OF-HOME CARE</b>					
	HOUSEHOLD OF RELATIVE WITH IN-KIND ROOM & BOARD			IN LICENSED FACILITY OR HOUSEHOLD OF RELATIVE WITHOUT IN-KIND ROOM & BOARD		
<b><u>INDIVIDUAL:</u></b>	<b>TOTAL CAPI</b>		<b>TOTAL SSI/SSP</b>	<b>TOTAL CAPI</b>		<b>TOTAL SSI/SSP</b>
AGED OR DISABLED - without cooking facilities (RMA) <sup>1</sup>	<b>\$896.90</b>		\$906.90	<b>\$1,146.37</b>		\$1,156.37
BLIND DISABLED MINOR - living with parent(s) - living with non-parent relative or non-relative guardian	<b>\$896.90</b>		\$906.90	<b>\$1,146.37</b>		\$1,156.37
	<b>\$896.90</b>		\$906.90	<b>\$1,146.37</b>		\$1,156.37
<b><u>COUPLE:</u></b>	<b>TOTAL CAPI</b>	<b>ONE CAPI, ONE SSI</b>	<b>TOTAL SSI/SSP</b>	<b>TOTAL CAPI</b>	<b>ONE CAPI, ONE SSI</b>	<b>TOTAL SSI/SSP</b>
AGED OR DISABLED - per couple - without cooking facilities (RMA) <sup>1</sup>	<b>\$1,787.86</b>	\$1,797.86	\$1,807.86	<b>\$2,292.74</b>	\$2,302.74	\$2,312.74
BLIND - per couple	<b>\$1,787.86</b>	\$1,797.86	\$1,807.86	<b>\$2,292.74</b>	\$2,302.74	\$2,312.74
BLIND/AGED OR DISABLED - per couple	<b>\$1,787.86</b>	\$1,797.86	\$1,807.86	<b>\$2,292.74</b>	\$2,302.74	\$2,312.74

<sup>1</sup>RMA - \$84 Individual; \$168 Couple

Note: Based on W&I section 18941, CAPI benefits are equivalent to those of the SSI/SSP program, except that the monthly payment is reduced by \$10 per individual and \$20 per couple since CAPI recipients are not subject to SSI cash-out and therefore eligible to apply for food benefits through CFAP.

\*Please refer to the first tab titled "[Acronyms](#)" for a full description of acronyms.



**CalWORKs MAP Levels\***Effective April 1, 2015 to September 30, 2016<sup>1</sup>

Region 1		
AU Size	Exempt MAP	Non-Exempt MAP
1	\$387	\$350
2	\$636	\$569
3	\$788	\$704
4	\$936	\$840
5	\$1,065	\$954
6	\$1,197	\$1,072
7	\$1,315	\$1,178
8	\$1,434	\$1,283
9	\$1,549	\$1,387
10 or more	\$1,665	\$1,490

Region 2		
AU Size	Exempt MAP	Non-Exempt MAP
1	\$369	\$331
2	\$607	\$541
3	\$751	\$670
4	\$891	\$799
5	\$1,017	\$909
6	\$1,141	\$1,021
7	\$1,254	\$1,120
8	\$1,366	\$1,222
9	\$1,477	\$1,321
10 or more	\$1,587	\$1,418

Effective October 1, 2016 to June 30, 2017<sup>2</sup>

Region 1		
AU Size	Exempt MAP	Non-Exempt MAP
1	\$392	\$355
2	\$645	\$577
3	\$799	\$714
4	\$949	\$852
5	\$1,080	\$968
6	\$1,214	\$1,087
7	\$1,334	\$1,195
8	\$1,454	\$1,301
9	\$1,571	\$1,407
10 or more	\$1,689	\$1,511

Region 2		
AU Size	Exempt MAP	Non-Exempt MAP
1	\$374	\$336
2	\$616	\$549
3	\$762	\$680
4	\$904	\$810
5	\$1,031	\$922
6	\$1,157	\$1,035
7	\$1,272	\$1,136
8	\$1,385	\$1,239
9	\$1,498	\$1,340
10 or more	\$1,610	\$1,438

<sup>1</sup>Grant levels reflect a five percent MAP increase effective April 1, 2015, for all AUs in Region 1 and Region 2.<sup>2</sup>Grant levels reflect a 1.43 percent MAP increase effective October 1, 2016, for all AUs in Region 1 and Region 2.**Region 1 Counties:** Alameda, Contra Costa, Los Angeles, Marin, Monterey, Napa, Orange, San Diego, San Francisco, San Luis Obispo, San Mateo, Santa Barbara, Santa Clara, Santa Cruz, Solano, Sonoma and Ventura.**Region 2 Counties:** Alpine, Amador, Butte, Calaveras, Colusa, Del Norte, El Dorado, Fresno, Glenn, Humboldt, Imperial, Inyo, Kern, Kings, Lake, Lassen, Madera, Mariposa, Mendocino, Merced, Modoc, Mono, Nevada, Placer, Plumas, Riverside, Sacramento, San Benito, San Bernardino, San Joaquin, Shasta, Sierra, Siskiyou, Stanislaus, Sutter, Tehama, Trinity, Tulare, Tuolumne, Yolo and Yuba.

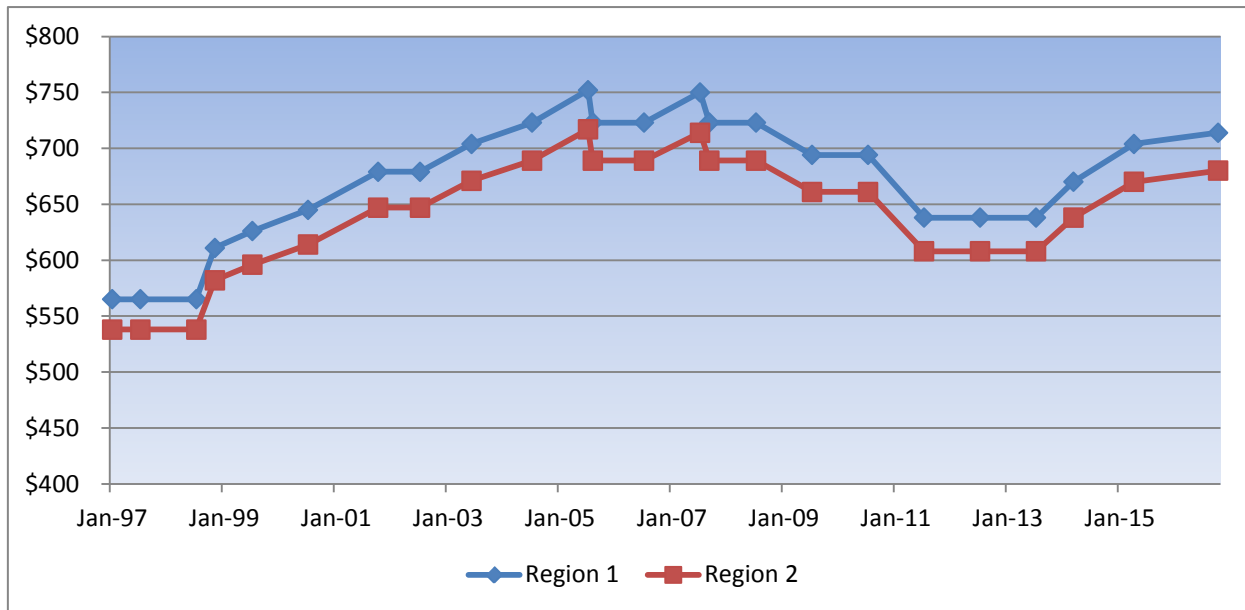
For more information on CalWORKs historical MAP levels, please refer to the CDSS website at:

<http://www.cdss.ca.gov/research/res/pdf/calreports/MAP-MBSAC.pdf>*\*Please refer to the first tab titled "[Acronyms](#)" for a full description of acronyms.*

***This page is intentionally blank.***

## CalWORKs MAP History\*

Based on Non-Exempt MAP for AU of Three



	Region 1	Region 2		Region 1	Region 2
Jan-97	\$565	\$538	Jul-06	\$723	\$689
Jul-97	\$565	\$538	Jul-07	\$750	\$714
Jul-98	\$565	\$538	Sep-07	\$723	\$689
Nov-98	\$611	\$582	Jul-08	\$723	\$689
Jul-99	\$626	\$596	Jul-09	\$694	\$661
Jul-00	\$645	\$614	Jul-10	\$694	\$661
Oct-01	\$679	\$647	Jul-11	\$638	\$608
Jul-02	\$679	\$647	Jul-12	\$638	\$608
Jun-03	\$704	\$671	Jul-13	\$638	\$608
Jul-04	\$723	\$689	Mar-14	\$670	\$638
Jul-05	\$752	\$717	Apr-15	\$704	\$670
Aug-05	\$723	\$689	Oct-16	\$714	\$680

**Region 1 Counties:** Alameda, Contra Costa, Los Angeles, Marin, Monterey, Napa, Orange, San Diego, San Francisco, San Luis Obispo, San Mateo, Santa Barbara, Santa Clara, Santa Cruz, Solano, Sonoma and Ventura.

**Region 2 Counties:** Alpine, Amador, Butte, Calaveras, Colusa, Del Norte, El Dorado, Fresno, Glenn, Humboldt, Imperial, Inyo, Kern, Kings, Lake, Lassen, Madera, Mariposa, Mendocino, Merced, Modoc, Mono, Nevada, Placer, Plumas, Riverside, Sacramento, San Benito, San Bernardino, San Joaquin, Shasta, Sierra, Siskiyou, Stanislaus, Sutter, Tehama, Trinity, Tulare, Tuolumne, Yolo and Yuba.

For more information on CalWORKs historical MAP levels, please refer to the CDSS website at: <http://www.cdss.ca.gov/research/res/pdf/calreports/MAP-MBSAC.pdf>

\*Please refer to the first tab titled "[Acronyms](#)" for a full description of acronyms.

***This page is intentionally blank.***

## Historical CalWORKs and TANF Funding Chart <sup>\*</sup>

	FY 2009-10	FY 2010-11	FY 2011-12	FY 2012-13
<b>Total TANF Grant/Required MOE</b>	<b>\$ 6,584,132,000</b>	<b>\$ 6,950,599,000</b>	<b>\$ 6,580,797,000</b>	<b>\$ 6,584,722,000</b>
<b>CalWORKs Program<sup>1</sup></b>	<b>5,341,519,431</b>	<b>5,576,729,520</b>	<b>5,269,004,000</b>	<b>5,076,484,000</b>
Grants	3,406,732,000	3,674,460,000	3,260,513,000	3,155,806,000
Administration	590,571,121	619,727,897	652,927,039	643,265,561
Services	798,905,700	784,790,383	826,832,008	819,383,597
Child Care	440,639,196	388,502,665	409,314,953	330,464,842
Mental Health/Substance Abuse Svcs	104,671,414	109,248,575	119,417,000	127,564,000
County Share of Admin/Svcs <sup>2</sup>	8,368,000			
Tribal TANF <sup>3</sup>	69,750,000	69,073,000	73,743,000	69,045,000
<b>Student Aid Commission</b>				<b>803,754,000</b>
<b>KinGAP</b>	<b>107,687,000</b>	<b>91,033,000</b>	<b>56,454,000</b>	<b>69,044,000</b>
<b>ARRA Subsidized Employment - ECF</b>	<b>158,508,000</b>	<b>200,348,000</b>		
<b>ARRA Non-Recurrent Short-Term Benefits ECF</b>	<b>176,233,000</b>	<b>18,775,000</b>		
<b>Non-TANF/MOE Eligible Expenditures</b>	<b>(179,056,000)</b>	<b>(158,118,000)</b>	<b>(163,597,000)</b>	<b>(163,874,000)</b>
<b>Additional TANF/MOE Expenditures in CDSS</b>	<b>299,394,000</b>	<b>303,620,000</b>	<b>291,131,000</b>	<b>308,402,000</b>
<b>Other MOE Eligible Expenditures</b>	<b>668,044,000</b>	<b>641,575,000</b>	<b>682,620,000</b>	<b>522,617,000</b>
<b>State Support</b>	<b>27,687,000</b>	<b>29,180,000</b>	<b>29,019,000</b>	<b>29,703,000</b>
<b>Total Expenditures</b>	<b>6,892,156,000</b>	<b>6,772,215,520</b>	<b>6,238,374,000</b>	<b>6,715,175,000</b>
Federal TANF	4,041,842,000	3,810,007,000	3,391,395,000	3,470,035,000
General Fund (MOE) <sup>4</sup>	2,712,840,000	3,103,684,000	1,689,030,000	2,056,417,000
Other State Funds (Employment Training Funding)	20,000,000			
County Funds <sup>4</sup>	117,474,000	113,097,000	1,157,949,000	1,188,723,000
<b>Total TANF transfers</b>	<b>440,818,000</b>	<b>440,163,000</b>	<b>444,672,000</b>	<b>440,136,000</b>
Non-CalWORKs Transfers <sup>5</sup>	186,921,000	197,931,808	192,242,450	192,243,000
CalWORKs/Tribal TANF Transfers	253,897,000	242,231,192	252,429,550	247,893,000
TANF Grant/Required MOE	6,584,132,000	6,950,599,000	6,580,797,000	6,584,722,000
Prior Year TANF Carry Forward <sup>6</sup>	117,100,000	233,398,000	158,450,000	245,245,000
Excess MOE Needed to Fund Programs				394,236,000
Single Allocation Reappropriation				80,000,000
ARRA - Emergency Contingency Funds	370,195,000	125,626,000		
ARRA - Subsidized Employment	159,386,000	215,348,000		
ARRA - Non-Recurring ECF	176,233,000	27,225,000		
<b>Total Available Funding</b>	<b>7,407,046,000</b>	<b>7,552,196,000</b>	<b>6,739,247,000</b>	<b>7,304,203,000</b>
<b>Total Funding Needed</b>	<b>7,332,974,000</b>	<b>7,212,378,520</b>	<b>6,683,046,000</b>	<b>7,155,311,000</b>
NET TANF Carry-Over Funds <sup>6</sup>	74,072,000	91,187,000	56,201,000	148,892,000
CalWORKs Contribution to the General Fund <sup>7</sup>	\$1,262,046,000	\$1,234,159,808	\$1,222,447,450	\$1,896,060,000

Please see Notes Associated with the Historical CalWORKs and TANF Funding Chart for additional information.

<sup>\*</sup>Please refer to the first tab titled "[Acronyms](#)" for a full description of acronyms.

## Historical CalWORKs and TANF Funding Chart <sup>\*</sup>

	FY 2013-14	FY 2014-15	FY 2015-16 May Revision	FY 2016-17 May Revision
<b>Total TANF Grant/Required MOE</b>	<b>\$ 6,575,412,000</b>	<b>\$ 6,579,960,000</b>	<b>\$6,578,977,000</b>	<b>\$6,574,502,000</b>
<b>CalWORKs Program<sup>1</sup></b>	<b>5,285,017,000</b>	<b>5,520,623,000</b>	<b>5,491,587,000</b>	<b>5,216,567,000</b>
Grants	3,117,515,000	3,218,650,000	3,095,315,000	2,999,248,000
Administration	746,813,504	778,585,316	718,093,347	654,511,725
Services	931,663,610	1,021,068,882	1,195,782,025	1,111,833,295
Child Care	362,418,886	375,712,802	355,790,628	324,367,980
Mental Health/Substance Abuse Svcs	126,606,000	126,606,000	126,606,000	126,606,000
County Share of Admin/Svcs <sup>2</sup>				
Tribal TANF <sup>3</sup>	80,168,000	75,945,000	74,948,000	79,637,000
<b>Student Aid Commission</b>	<b>541,712,000</b>	<b>377,406,000</b>	<b>520,897,000</b>	<b>1,108,508,000</b>
<b>KinGAP</b>	<b>73,319,000</b>	<b>71,242,000</b>	<b>69,488,000</b>	<b>74,196,000</b>
<b>ARRA Subsidized Employment - ECF</b>				
<b>ARRA Non-Recurrent Short-Term Benefits ECF</b>				
<b>Non-TANF/MOE Eligible Expenditures</b>	<b>(339,006,000)</b>	<b>(658,633,000)</b>	<b>(765,047,000)</b>	<b>(766,911,000)</b>
<b>Additional TANF/MOE Expenditures in CDSS</b>	<b>311,414,000</b>	<b>341,580,000</b>	<b>359,978,000</b>	<b>374,183,000</b>
<b>Other MOE Eligible Expenditures</b>	<b>468,067,000</b>	<b>540,382,000</b>	<b>519,282,000</b>	<b>519,282,000</b>
<b>State Support</b>	<b>29,999,000</b>	<b>29,900,000</b>	<b>30,987,000</b>	<b>31,213,000</b>
<b>Total Expenditures</b>	<b>6,450,690,000</b>	<b>6,298,445,000</b>	<b>6,302,120,000</b>	<b>6,636,675,000</b>
Federal TANF	3,389,838,000	3,374,299,000	3,273,398,000	3,681,715,000
General Fund (MOE) <sup>4</sup>	1,653,982,000	1,231,641,000	1,212,799,000	1,226,411,000
Other State Funds (Employment Training Funding)				
County Funds <sup>4</sup>	1,406,870,000	1,692,505,000	1,815,923,000	1,728,549,000
<b>Total TANF transfers</b>	<b>451,931,000</b>	<b>445,637,000</b>	<b>446,773,000</b>	<b>451,943,000</b>
Non-CalWORKs Transfers <sup>5</sup>	192,242,773	192,119,000	192,119,000	192,119,000
CalWORKs/Tribal TANF Transfers	259,688,227	253,518,000	254,654,000	259,824,000
TANF Grant/Required MOE	6,575,412,000	6,579,960,000	6,578,977,000	6,574,502,000
Prior Year TANF Carry Forward <sup>6</sup>	107,951,000	268,398,000	386,193,000	399,840,000
Excess MOE Needed to Fund Programs	219,258,000	78,004,000	183,563,000	114,276,000
Single Allocation Reappropriation				
ARRA - Emergency Contingency Funds				
ARRA - Subsidized Employment				
ARRA - Non-Recurring ECF				
<b>Total Available Funding</b>	<b>6,902,621,000</b>	<b>6,926,362,000</b>	<b>7,148,733,000</b>	<b>7,088,618,000</b>
<b>Total Funding Needed</b>	<b>6,902,621,000</b>	<b>6,744,082,000</b>	<b>6,748,893,000</b>	<b>7,088,618,000</b>
NET TANF Carry-Over Funds <sup>6</sup>	-	182,280,000	399,840,000	-
CalWORKs Contribution to the General Fund <sup>7</sup>	\$1,586,754,773	\$1,522,729,000	\$1,661,764,000	\$2,268,288,000

Please see Notes Associated with the Historical CalWORKs and TANF Funding Chart for additional information.

<sup>\*</sup>Please refer to the first tab titled "[Acronyms](#)" for a full description of acronyms.

---

## Historical CalWORKs and TANF Funding Chart<sup>\*</sup>

Notes Associated with the Historical CalWORKs and TANF Funding Chart:

This is a point in time document that is updated each Governor's Budget and May Revision for the current and budget years only. Other figures represent the last updated budget amounts. See 2014 May Revision Estimates Binder for details on previous years.

<sup>1</sup>Because of the flexible nature of the Single Allocation, for display purposes the administration, services (other than mental health and substance abuse) and child care budgeted dollars for FY 2015-16 and FY 2016-17 are adjusted for the most recent FY of actual expenditures.

<sup>2</sup>This is a non-add line because the portion of county contributions, if any, goes towards administration and services.

<sup>3</sup>The Tribal TANF funds prior to FY 2008-09 were previously included in the grants, administration and services sections, but are now shown separately.

<sup>4</sup>The FY 2015-16 and FY 2016-17 reflect a funding shift from GF to county funds payable through the CalWORKs MOE Subaccount, the Realignment Family Support Subaccount and the Child Poverty and Family Supplemental Subaccount. With the exception of the subaccount funding utilized for the non-MOE population, this funding is MOE countable. See the CalWORKs Funding Subaccount Premise for additional information.

<sup>5</sup>This item includes the TANF transfer to Title XX for non-CalWORKs programs including FC and CWS.

<sup>6</sup>The prior year figure displays a point in time carry forward projection. The net TANF carry-over funds reflect the difference between available funds and the funding needed to budget for the next year.

<sup>7</sup>CalWORKs contribution to GF includes Student Aid Commission, KinGAP, Additional TANF/MOE Expenditures in CDSS, Other MOE Eligible Expenditures, Non-CalWORKs TANF Transfers and WPR adjustment (if applicable). This included \$43.6 million CalWORKs automation in FY 2015-16 and \$50.9 million FY 2016-17.

## Funding Reconciliation for CalWORKs, the TANF Block Grant and MOE\* (in millions)

	FY 2015-16 Revised Budget					TOTAL
	TANF <sup>1</sup>	MOE <sup>2</sup>		Non-MOE	Title XX <sup>5</sup>	
		GF	County <sup>3</sup>	GF/County <sup>4</sup>		
<b>CalWORKs<sup>6</sup></b>	<b>\$2,416</b>	<b>\$493</b>	<b>\$1,802</b>	<b>\$602</b>	<b>\$163</b>	<b>\$5,476</b>
Grants						\$3,096
Administration						\$494
Services						\$1,349
Mental Health & Substance Abuse						\$127
Child Care						\$410
<b>CDSS Programs (Not CalWORKs)</b>	<b>\$400</b>	<b>\$201</b>	<b>\$14</b>			<b>\$615</b>
Tribal TANF	\$82	\$75	\$0			\$157
WINS	\$0	\$31	\$0			\$31
Other CDSS Programs <sup>7</sup>	\$318	\$95	\$14			\$427
<b>Other State Agencies (Not CDSS)</b>	<b>\$539</b>	<b>\$519</b>	<b>\$0</b>			<b>\$1,058</b>
Community College	\$0	\$35	\$0			\$35
CDE Child Care Programs	\$0	\$472	\$0			\$472
State Disregard Payment	\$0	\$12	\$0			\$12
Student Aid Commission	\$521	\$0	\$0			\$521
TANF Pass-Through for State Agencies	\$18	\$0	\$0			\$18
<b>Total Spent in All Programs</b>	<b>\$3,355</b>	<b>\$1,213</b>	<b>\$1,816</b>	<b>\$602</b>	<b>\$163</b>	<b>\$7,149</b>

<sup>1</sup>Includes \$3.7 billion annual TANF Block Grant and TANF Carry Forward funds from prior year, less approximately \$365.2 million and \$364.7 million transferred to Title XX in FY 2015-16 and FY 2016-17, respectively.

<sup>2</sup>Based on \$2.8 billion MOE requirement after adjustments. Includes Excess MOE of approximately \$183.6 million in FY 2015-16 and \$114.3 million in FY 2016-17.

<sup>3</sup>See County Fund Sources chart on next page.

<sup>4</sup>Includes approximately \$133.4 million and \$132.8 million GF for services, administration, child care and housing support in FY 2015-16 and FY 2016-17, respectively. The remaining costs are funded through the Realignment Family Support and Child Poverty and Family Supplemental Subaccounts.

<sup>5</sup>Title XX in the CalWORKs program is utilized for Stage One Child Care.

<sup>6</sup>Funding for CalWORKs components cannot be broken out by funding type due to overall shifts from TANF to MOE/Non-MOE.

<sup>7</sup>Includes KinGAP, other MOE-Eligible Programs in CDSS and state support costs for CalWORKs. TANF funds transferred to Title XX for other programs are not displayed.



## Funding Reconciliation for CalWORKs, the TANF Block Grant and MOE\* (in millions)

	FY 2016-17 Governor's Budget					TOTAL
	TANF <sup>1</sup>	MOE <sup>2</sup>		Non-MOE	Title XX <sup>5</sup>	
		GF	County <sup>3</sup>	GF/County <sup>4</sup>		
<b>CalWORKs<sup>6</sup></b>	<b>\$2,233</b>	<b>\$486</b>	<b>\$1,713</b>	<b>\$604</b>	<b>\$163</b>	<b>\$5,199</b>
Grants						\$3,000
Administration						\$470
Services						\$1,208
Mental Health & Substance Abuse						\$127
Child Care						\$394
<b>CDSS Programs (Not CalWORKs)</b>	<b>\$409</b>	<b>\$221</b>	<b>\$16</b>			<b>\$646</b>
Tribal TANF	\$87	\$80	\$0			\$167
WINS	\$0	\$32	\$0			\$32
Other CDSS Programs <sup>7</sup>	\$322	\$109	\$16			\$447
<b>Other State Agencies (Not CDSS)</b>	<b>\$1,127</b>	<b>\$519</b>	<b>\$0</b>			<b>\$1,646</b>
Community College	\$0	\$35	\$0			\$35
CDE Child Care Programs	\$0	\$472	\$0			\$472
State Disregard Payment	\$0	\$12	\$0			\$12
Student Aid Commission	\$1,109	\$0	\$0			\$1,109
TANF Pass-Through for State Agencies	\$18	\$0	\$0			\$18
<b>Total Spent in All Programs</b>	<b>\$3,769</b>	<b>\$1,226</b>	<b>\$1,729</b>	<b>\$604</b>	<b>\$163</b>	<b>\$7,491</b>

COUNTY FUND SOURCES		
CalWORKs MOE and Non-MOE Expenditures	FY 2015-16	FY 2016-17
2.5 Percent of CalWORKs Grants	\$73	\$70
CalWORKs MOE Subaccount	\$1,121	\$1,121
Realignment Family Support Subaccount	\$750	\$643
Child Poverty and Family Supplemental Subaccount	\$326	\$350
<b>Total</b>	<b>\$2,270</b>	<b>\$2,184</b>

GF EXPENDITURES <sup>8</sup>		
	FY 2015-16	FY 2016-17
<b>GF in CalWORKs</b>	<b>\$625</b>	<b>\$619</b>
<b>Total GF in All Programs</b>	<b>\$1,346</b>	<b>\$1,359</b>

<sup>8</sup>For purposes of this chart, GF in CalWORKs reflects MOE and Non-MOE GF expenditures on CalWORKs families for grants, administration, services, mental health, substance abuse and child care.

## IHSS Individual Provider Caseload and Hours by County\*

The following caseloads reflect the Individual Provider service mode. Hours represent the IHSS Basic Cost premise, absent reductions to service hours.

County	FY 2015-16		FY 2016-17	
	Average Monthly Caseload	Average Hours Per Case	Average Monthly Caseload	Average Hours Per Case
Alameda	18,958	119	19,920	119
Alpine	26	90	27	90
Amador	201	100	211	100
Butte	3,286	130	3,452	130
Calaveras	339	109	356	109
Colusa	120	89	126	89
Contra Costa	7,588	103	7,973	103
Del Norte	311	134	326	134
El Dorado	912	142	959	142
Fresno	14,587	113	15,327	113
Glenn	422	121	443	121
Humboldt	1,375	106	1,445	106
Imperial	5,175	79	5,438	79
Inyo	111	112	117	112
Kern	3,805	92	3,998	92
Kings	1,725	100	1,812	100
Lake	1,866	120	1,961	120
Lassen	157	91	165	91
Los Angeles	187,140	101	196,635	101
Madera	1,645	100	1,728	100
Marin	1,607	112	1,689	112
Mariposa	154	115	162	115
Mendocino	1,530	107	1,608	107
Merced	2,806	93	2,948	93
Modoc	81	78	85	78
Mono	27	158	29	158
Monterey	3,944	93	4,144	93
Napa	1,006	120	1,057	120
Nevada	617	117	648	117
Orange	22,305	97	23,437	97
Placer	2,353	144	2,472	144
Plumas	265	95	279	95
Riverside	23,937	105	25,152	105
Sacramento	21,529	117	22,621	117

\*Please refer to the first tab titled "[Acronyms](#)" for a full description of acronyms.

## IHSS Individual Provider Caseload and Hours by County<sup>\*</sup>

County	FY 2015-16		FY 2016-17	
	Average Monthly Caseload	Average Hours Per Case	Average Monthly Caseload	Average Hours Per Case
San Benito	556	115	585	115
San Bernardino	23,819	110	25,028	110
San Diego	23,914	102	25,127	102
San Francisco	21,121	97	22,193	97
San Joaquin	5,318	95	5,588	95
San Luis Obispo	1,558	114	1,637	114
San Mateo	4,180	114	4,392	114
Santa Barbara	2,853	100	2,998	100
Santa Clara	19,094	103	20,063	103
Santa Cruz	2,144	117	2,253	117
Shasta	2,711	109	2,849	109
Sierra	27	132	29	132
Siskiyou	467	92	490	92
Solano	3,707	130	3,895	130
Sonoma	5,007	109	5,261	109
Stanislaus	5,604	89	5,888	89
Sutter	965	100	1,014	100
Tehama	849	110	892	110
Trinity	153	106	161	106
Tulare	2,631	87	2,765	87
Tuolumne	290	110	305	110
Ventura	4,353	111	4,574	111
Yolo	2,136	113	2,245	113
Yuba	678	93	713	93
<b>County Total</b>	<b>466,046</b>	<b>104.2</b>	<b>489,691</b>	<b>104.2</b>

*\*Please refer to the first tab titled "[Acronyms](#)" for a full description of acronyms.*

## IHSS Wage, Tax, Benefit and Administrative Rates for Individual Provider Mode<sup>\*</sup>

### FY 2015-16

The following rates represent dollars per hour effective through February 2016.

County	Effective Date	Wages	Payroll Tax	Health Benefits	Other Benefits	Administration
Alameda	Nov-14	\$12.50	\$1.39	\$0.72	\$0.00	\$0.06
Alpine <sup>3</sup>	Jan-16	\$10.00	\$0.83	\$0.00	\$0.00	\$0.00
Amador <sup>3</sup>	Jan-16	\$10.00	\$0.93	\$0.60	\$0.00	\$0.53
Butte <sup>3</sup>	Jan-16	\$10.00	\$0.90	\$0.60	\$0.00	\$0.06
Calaveras <sup>2</sup>	Dec-15	\$10.00	\$0.93	\$0.54	\$0.01	\$0.78
Colusa <sup>3</sup>	Jan-16	\$10.00	\$0.72	\$0.00	\$0.00	\$0.86
Contra Costa	Jun-10	\$11.50	\$1.07	\$1.31	\$0.13	\$0.26
Del Norte <sup>3</sup>	Jan-16	\$10.00	\$0.73	\$0.00	\$0.00	\$0.15
El Dorado <sup>3</sup>	Jan-16	\$10.00	\$0.90	\$0.60	\$0.00	\$0.52
Fresno	Oct-08	\$10.25	\$0.99	\$0.85	\$0.00	\$0.10
Glenn <sup>3</sup>	Jan-16	\$10.00	\$0.90	\$0.00	\$0.00	\$0.62
Humboldt <sup>3</sup>	Jan-16	\$10.00	\$0.90	\$0.00	\$0.00	\$0.20
Imperial <sup>2,3</sup>	Feb-16	\$10.30	\$0.94	\$0.43	\$0.00	\$0.07
Inyo <sup>2</sup>	Oct-15	\$10.25	\$0.95	\$0.00	\$0.00	\$0.57
Kern	Feb-14	\$10.35	\$1.20	\$0.00	\$0.00	\$0.19
Kings <sup>2</sup>	Aug-15	\$10.25	\$0.93	\$0.00	\$0.00	\$0.36
Lake <sup>3</sup>	Jan-16	\$10.00	\$1.06	\$0.00	\$0.00	\$0.20
Lassen <sup>3</sup>	Jan-16	\$10.00	\$0.76	\$0.00	\$0.00	\$0.26
Los Angeles <sup>1,2,3</sup>	Feb-16	\$11.00	\$1.10	\$0.92	\$0.00	\$0.05
Madera	Apr-14	\$10.35	\$0.94	\$0.00	\$0.00	\$0.08
Marin <sup>2</sup>	Feb-16	\$13.35	\$3.99	\$0.82	\$0.00	\$0.33
Mariposa <sup>2</sup>	Oct-15	\$10.61	\$0.95	\$0.00	\$0.00	\$0.77
Mendocino <sup>3</sup>	Jan-16	\$11.00	\$1.38	\$0.00	\$0.00	\$0.43
Merced <sup>3</sup>	Jan-16	\$10.00	\$1.80	\$0.00	\$0.00	\$0.08
Modoc <sup>3</sup>	Jan-16	\$10.25	\$1.04	\$0.00	\$0.00	\$0.49
Mono <sup>3</sup>	Jan-16	\$10.00	\$0.41	\$0.00	\$0.00	\$1.43
Monterey <sup>2</sup>	Sep-15	\$12.00	\$2.16	\$0.44	\$0.00	\$0.13
Napa	Nov-14	\$12.10	\$1.10	\$0.00	\$0.00	\$0.19
Nevada <sup>3</sup>	Jan-16	\$10.00	\$1.05	\$0.60	\$0.00	\$0.57
Orange <sup>2,3</sup>	Feb-16	\$10.20	\$0.66	\$0.60	\$0.00	\$0.07
Placer <sup>2</sup>	Sep-15	\$10.50	\$1.05	\$0.08	\$0.00	\$0.29
Plumas <sup>3</sup>	Jan-16	\$10.00	\$1.05	\$0.60	\$0.00	\$0.57
Riverside <sup>2</sup>	Jul-15	\$11.50	\$0.92	\$0.60	\$0.00	\$0.27
Sacramento	Jan-14	\$10.80	\$0.99	\$0.80	\$0.00	\$0.07
San Benito	Oct-14	\$10.90	\$0.89	\$0.20	\$0.00	\$0.43

<sup>\*</sup>Please refer to the first tab titled "[Acronyms](#)" for a full description of acronyms.

# IHSS Wage, Tax, Benefit and Administrative Rates for Individual Provider Mode<sup>\*</sup>

## FY 2015-16

The following rates represent dollars per hour effective through February 2016.

County	Effective Date	Wages	Payroll Tax	Health Benefits	Other Benefits	Administration
San Bernardino <sup>3</sup>	Jan-16	\$10.00	\$0.80	\$0.38	\$0.00	\$0.17
San Diego <sup>3</sup>	Jan-16	\$10.00	\$1.10	\$0.34	\$0.00	\$0.21
San Francisco	May-15	\$12.25	\$1.32	\$2.51	\$0.00	\$0.10
San Joaquin <sup>3</sup>	Jan-16	\$10.00	\$1.19	\$0.74	\$0.00	\$0.17
San Luis Obispo <sup>2</sup>	Jan-16	\$11.45	\$1.03	\$0.20	\$0.00	\$0.28
San Mateo	Apr-15	\$12.65	\$1.27	\$0.80	\$0.28	\$0.18
Santa Barbara <sup>2</sup>	Jul-15	\$11.30	\$0.91	\$0.00	\$0.00	\$0.38
Santa Clara <sup>2</sup>	Feb-16	\$13.00	\$1.12	\$3.87	\$0.22	\$0.07
Santa Cruz	Jan-14	\$11.90	\$1.49	\$0.20	\$0.00	\$0.23
Shasta <sup>3</sup>	Jan-16	\$10.00	\$1.20	\$0.00	\$0.00	\$0.13
Sierra <sup>3</sup>	Jan-16	\$10.00	\$1.05	\$0.60	\$0.00	\$0.57
Siskiyou <sup>3</sup>	Jan-16	\$10.00	\$0.75	\$0.00	\$0.00	\$0.24
Solano	Apr-08	\$11.50	\$2.13	\$0.60	\$0.00	\$0.29
Sonoma	Oct-13	\$11.65	\$0.91	\$0.60	\$0.13	\$0.21
Stanislaus <sup>2</sup>	Jul-15	\$10.20	\$0.92	\$0.00	\$0.00	\$0.14
Sutter <sup>3</sup>	Jan-16	\$10.00	\$0.90	\$0.00	\$0.00	\$0.45
Tehama <sup>3</sup>	Jan-16	\$10.00	\$0.75	\$0.00	\$0.00	\$0.14
Trinity <sup>3</sup>	Jan-16	\$10.00	\$0.72	\$0.00	\$0.00	\$0.10
Tulare <sup>2</sup>	Jul-15	\$10.30	\$0.94	\$0.00	\$0.00	\$0.15
Tuolumne <sup>3</sup>	Jan-16	\$10.00	\$0.75	\$0.00	\$0.00	\$0.00
Ventura <sup>2</sup>	Jul-15	\$12.10	\$1.09	\$0.00	\$0.00	\$0.12
Yolo <sup>2</sup>	Jan-16	\$11.02	\$1.00	\$0.60	\$0.00	\$0.50
Yuba	Aug-09	\$10.00	\$1.43	\$0.60	\$0.00	\$0.27

**Notes:**

<sup>1</sup>Rates for the Los Angeles Backup Assistance Program: \$12.00 wages, \$1.20 payroll taxes, \$0.92 health benefits and \$0.05 administration costs.

<sup>2</sup>Rate changes in FY 2015-16 are displayed on the following page.

<sup>3</sup>The California minimum wage will increase to \$10.00 per hour January 2016. State imposed wage rate increases impacted the following 29 counties: Alpine, Amador, Butte, Colusa, Del Norte, El Dorado, Glenn, Humboldt, Imperial, Lake, Lassen, Los Angeles, Mendocino, Merced, Modoc, Mono, Nevada, Orange, Plumas, San Bernardino, San Diego, San Joaquin, Shasta, Sierra, Siskiyou, Sutter, Tehama, Trinity, and Tuolumne.

*\*Please refer to the first tab titled "[Acronyms](#)" for a full description of acronyms.*

## IHSS Wage, Tax, Benefit and Administrative Rates for Individual Provider Mode<sup>\*</sup>

### Rate Changes in FY 2015-16

County	New Rate Effective Date	Change in Wages	Change in Payroll Tax	Change in Health Benefits	Change in Other Benefits	Change in Admin
Alpine <sup>1</sup>	Jan-16	\$1.00	\$0.09	No Change	No Change	No Change
Amador <sup>1</sup>	Jan-16	\$1.00	\$0.02	No Change	No Change	(\$0.09)
Butte <sup>1</sup>	Jan-16	\$1.00	\$0.09	No Change	No Change	(\$0.01)
Calaveras	Aug-15/ Dec-15	No Change	\$0.03/ No Change	\$0.11/ (\$0.05)	No Change	(\$0.41)/ \$0.11
Colusa <sup>1</sup>	Jan-16	\$1.00	(\$0.10)	No Change	No Change	(\$0.34)
Del Norte <sup>1</sup>	Jan-16	\$0.50	No Change	No Change	No Change	(\$0.04)
El Dorado <sup>1</sup>	Jan-16	\$1.00	\$0.09	No Change	No Change	(\$0.08)
Glenn <sup>1</sup>	Jan-16	\$1.00	\$0.09	No Change	No Change	No Change
Humboldt <sup>1</sup>	Jan-16	\$1.00	\$0.08	No Change	No Change	\$0.01
Imperial <sup>1</sup>	Jan-16/ Feb-16	\$0.50/ \$0.30	\$0.05/ \$0.03	No Change/ \$0.14	No Change	No Change
Inyo	Oct-15	\$0.50	\$0.04	No Change	No Change	(\$0.06)
Kings	Aug-15	\$0.40	\$0.03	No Change	No Change	\$0.02
Lake <sup>1</sup>	Jan-16	\$0.70	\$0.07	No Change	No Change	No Change
Lassen <sup>1</sup>	Jan-16	\$1.00	\$0.07	No Change	No Change	No Change
Los Angeles <sup>1</sup>	Jan-16/ Feb-16	\$0.35/ \$1.00	\$0.03/ \$0.10	No Change	No Change	No Change
Marin	Feb-16	\$0.35	\$0.09	No Change	No Change	\$0.01
Mariposa	Oct-15	\$0.51	\$0.04	No Change	No Change	(\$0.05)
Mendocino <sup>1</sup>	Jan-16	\$1.10	\$0.20	(\$0.60)	No Change	(\$0.04)
Merced <sup>1</sup>	Jan-16	\$0.50	\$0.08	No Change	No Change	No Change
Modoc <sup>1</sup>	Jan-16	\$1.00	\$0.13	No Change	No Change	No Change
Mono <sup>1</sup>	Jan-16	\$1.00	(\$0.28)	No Change	No Change	(\$0.93)
Monterey	Sep-15	\$0.50	No Change	(\$0.25)	No Change	(\$0.02)
Nevada <sup>1</sup>	Jan-16	\$0.50	\$0.05	No Change	No Change	No Change
Orange <sup>1</sup>	Jan-16/ Feb-16	\$0.70/ \$0.20	(\$0.04)/ No Change	No Change	No Change	\$0.01/ No Change

<sup>\*</sup>Please refer to the first tab titled "[Acronyms](#)" for a full description of acronyms.

## IHSS Wage, Tax, Benefit and Administrative Rates for Individual Provider Mode<sup>\*</sup> Rate Changes in FY 2015-16

County	New Rate Effective Date	Change in Wages	Change in Payroll Tax	Change in Health Benefits	Change in Other Benefits	Change in Admin
Placer	Sep-15	\$0.50	\$0.05	(\$0.52)	No Change	(\$0.10)
Plumas <sup>1</sup>	Jan-16	\$0.50	\$0.05	No Change	No Change	No Change
Riverside	Jul-15	No Change	No Change	No Change	No Change	\$0.12
San Bernardino <sup>1</sup>	Jan-16	\$0.75	\$0.06	No Change	No Change	No Change
San Diego <sup>1</sup>	Jan-16	\$0.15	No Change	(\$0.03)	No Change	No Change
San Joaquin <sup>1</sup>	Jan-16	\$0.15	\$0.02	No Change	No Change	\$0.01
San Luis Obispo	Jan-16	\$0.40	\$0.04	\$0.20	No Change	\$0.01
Santa Barbara	Jul-15	\$0.25	\$0.02	No Change	No Change	\$0.10
Santa Clara	Feb-16	\$0.19	(\$0.01)	No Change	No Change	No Change
Shasta <sup>1</sup>	Jan-16	\$0.36	\$0.04	No Change	No Change	No Change
Sierra <sup>1</sup>	Jan-16	\$0.50	\$0.05	No Change	No Change	No Change
Siskiyou <sup>1</sup>	Jan-16	\$1.00	\$0.08	No Change	No Change	\$0.11
Stanislaus	Jul-15	\$0.10	No Change	No Change	No Change	No Change
Sutter <sup>1</sup>	Jan-16	\$0.26	\$0.07	No Change	No Change	(\$0.33)
Tehama <sup>1</sup>	Jan-16	\$1.00	(\$0.07)	No Change	No Change	(\$0.05)
Trinity <sup>1</sup>	Jan-16	\$1.00	(\$0.10)	No Change	No Change	\$0.06
Tulare	Jul-15	\$0.71	\$0.06	No Change	No Change	\$0.01
Tuolumne <sup>1</sup>	Jan-16	\$0.75	\$0.14	No Change	No Change	No Change
Ventura	Jul-15	\$1.00	\$0.09	No Change	No Change	(\$0.07)
Yolo	Jan-16	No Change	No Change	No Change	No Change	\$0.24

<sup>1</sup> The California minimum wage will increase to \$10.00 per hour January 2016. State imposed wage rate increases impacted the following 29 counties: Alpine, Amador, Butte, Colusa, Del Norte, El Dorado, Glenn, Humboldt, Imperial, Lake, Lassen, Los Angeles, Mendocino, Merced, Modoc, Mono, Nevada, Orange, Plumas, San Bernardino, San Diego, San Joaquin, Shasta, Sierra, Siskiyou, Sutter, Tehama, Trinity, and Tuolumne.

*\*Please refer to the first tab titled "[Acronyms](#)" for a full description of acronyms.*

## IHSS County MOE: Shift to GF\*

(amounts in thousands)

The following reflects the county share of total services and administration costs absent CCI, with no MOE impact applied.<sup>1</sup> The total county share of costs is compared to the county MOE amount for services and administration to calculate the total costs over the MOE that will shift to GF.

IHSS Services	FY 2015-16	FY 2016-17
IHSS Basic - Services	\$597,074	\$645,029
Community First Choice Option (CFCO)	\$698,728	\$756,709
SB 3 Minimum Wage Impact <sup>2</sup>	\$0	\$6,276
Reduction in Service Hours	(\$84,264)	(\$93,042)
Restoration in Service Hours <sup>2,3</sup>	\$84,264	\$93,042
Caseload Impact of the ACA <sup>2</sup>	\$0	\$765
FLSA Overtime <sup>2</sup>	\$50,815	\$80,600
FLSA Compliance <sup>2</sup>	\$24,459	\$63,133
Provider Exceptions <sup>2</sup>	\$1,261	\$7,797
Federally Ineligible Providers	\$959	\$1,029
CCT Money Follows the Person	\$270	\$351
Provider Wage Reimbursement <sup>2</sup>	\$76	\$83
Conlan	\$103	\$103
<b>Total Budgeted for County Share of Services</b>	<b>\$1,373,745</b>	<b>\$1,561,875</b>
<b>County Services MOE Amount</b>	<b>\$993,467</b>	<b>\$1,047,257</b>
<b>MOE Shift to GF (Service costs exceeding MOE)</b>	<b>\$380,278</b>	<b>\$514,618</b>
IHSS Administration	FY 2015-16	FY 2016-17
IHSS Basic - Administration	\$48,542	\$51,120
SB3 Minimum Wage Impact – Administration <sup>2</sup>	\$0	\$151
Reduction in Service Hours - Administration	\$959	\$0
Caseload Impact of the ACA-Administration <sup>2</sup>	\$282	\$793
FLSA - Administration <sup>2</sup>	\$7,583	\$697
Quality Assurance and Contracts	\$4,834	\$4,868
Public Authority Administration	\$4,085	\$4,085
County Employer of Record	\$54	\$54
Program Integrity - Administrative Activities	\$16,142	\$16,143
Provider Enrollment Statement Form/Process	\$492	\$518
Provider Wage Reimbursement <sup>2</sup>	\$7	\$7
IHSS Plus Option (IPO) - Administration	\$26	\$28
<b>Total Budgeted for County Share of Administration</b>	<b>\$83,006</b>	<b>\$78,464</b>
<b>County Administration MOE Amount</b>	<b>\$64,046</b>	<b>\$66,287</b>
<b>MOE Shift to GF (Admin costs exceeding MOE)</b>	<b>\$18,960</b>	<b>\$12,177</b>
<b>Total County MOE for Services and Administration</b>	<b>\$1,057,513</b>	<b>\$1,113,544</b>
<b>Total MOE Shift to GF for Services and Administration (expenditures exceeding MOE base)</b>	<b>\$399,238</b>	<b>\$526,795</b>

<sup>1</sup>Based on pre-MOE sharing ratios. Prior to the county MOE, counties were responsible for 35 percent of the non-federal share of service costs and 30 percent of the non-federal share of administrative costs. Under the county MOE, counties pay a set share of cost based on FY 2011-12 expenditures. The county MOE is adjusted for increases for both Individual Provider Mode wages and Contract Mode rates in addition to an annual inflation factor beginning FY 2014-15. For more information on the IHSS county MOE, please refer to the IHSS County MOE premise.

<sup>2</sup>Represents new costs which were not in place when the base county MOE was established. Counties are not held responsible for additional costs under the MOE environment.

<sup>3</sup>For FY 2016-17, Reduction in Service Hours will be restored with GF.



## Continuum of Care Reform (CCR) Summary <sup>\*</sup>

The CCR has costs listed in several sections in the budget tables. This chart provides a consolidated view of all of the costs included in the budget tables for FY 2015-16 and FY 2016-17 for the CCR.

Item	2016 May Revision					
	FY 2015-16			FY 2016-17		
	Total	Federal	GF	Total	Federal	GF
Home-Based Family Care Rate	-	-	-	\$35,703	\$2,764	\$32,939
Foster Family Agency – Social Worker Rate Increase	\$7,258	-	\$7,258	\$3,786	-	\$3,786
Accreditation	-	-	-	\$2,827	\$1,414	\$1,413
Outcomes, Accountability and Automation	-	-	-	\$3,000	\$1,070	\$1,930
Child and Family Teams	-	-	-	\$27,441	\$5,423	\$22,018
Second Level Administration Review	-	-	-	\$29	\$6	\$23
Case Planning Assessment	-	-	-	\$3,500	\$1,148	\$2,352
Foster Parent Recruitment, Retention and Support	\$21,827	\$4,634	\$17,193	\$54,729	\$11,469	\$43,260
Resource Family Approval	-	-	-	\$12,042	\$4,012	\$8,030
Training	-	-	-	\$4,585	\$3,010	\$1,575
<b>CDSS Local Assistance Total</b>	<b>\$29,085</b>	<b>\$4,634</b>	<b>\$24,451</b>	<b>\$147,642</b>	<b>\$30,316</b>	<b>\$117,326</b>
<b>CDSS State Operations</b>	<b>\$5,500</b>	<b>\$2,500</b>	<b>\$3,000</b>	<b>\$5,500</b>	<b>\$2,500</b>	<b>\$3,000</b>
Short Term Residential Treatment Program, Certification-State Operations	-	-	-	\$350	\$175	\$175
Child and Family Teams	-	-	-	\$10,247	\$5,124	\$5,123
Mental Health Assessments	-	-	-	\$277	\$138	\$139
Mental Health Training	-	-	-	\$1,515	-	\$1,515
<b>DHCS Total</b>	<b>-</b>	<b>-</b>	<b>-</b>	<b>\$12,389</b>	<b>\$5,437</b>	<b>\$6,952</b>
<b>CCR Total</b>	<b>\$34,585</b>	<b>\$7,134</b>	<b>\$27,451</b>	<b>\$165,531</b>	<b>\$38,253</b>	<b>\$127,278</b>

**Note:**

Federal Title IV-E funds are not included for the CDSS Title IV-E California Well-Being Project Counties, as federal funds for the Project are capped.

*\*Please refer to the first tab titled "[Acronyms](#)" for a full description of acronyms.*

## Continuum of Care Reform (CCR) Summary<sup>\*</sup>

### Home-Based Family Care Rate Structure

#### Based on Level of Care (LOC)

<b>A</b>	<b>Pay to Resource Family for Basic Rate</b>	<b>LOC-1</b>	<b>LOC-2</b>	<b>LOC-3</b>	<b>LOC-4</b>
	Basic Rate	\$889	\$989	\$1,089	\$1,189
<b>B</b>	<b>Pay to Foster Family Agency (FFA)</b>	<b>LOC-1</b>	<b>LOC-2</b>	<b>LOC-3</b>	<b>LOC-4</b>
	Social Worker	\$340	\$340	\$340	\$340
	Social Services & Support	\$0	\$200	\$244	\$323
	Resource Family Approval	\$48	\$48	\$48	\$48
	Administration	\$672	\$672	\$672	\$672
	<b>Total</b>	<b>\$1,060</b>	<b>\$1,260</b>	<b>\$1,304</b>	<b>\$1,383</b>
<b>C</b>	<b>Pay to Resource Family for Treatment Foster Care (TFC)</b>				
	TFC Rate	\$2,259			
	<b>Pay to FFA including TFC Admin</b>				
	TFC Administration	\$3,482			
	TFC Social Services & Support	\$200			
	<b>Total</b>	<b>\$5,941</b>			
<b>D</b>	<b>Pay to Short-Term Residential Therapeutic Program (STRTP)</b>				
	STRTP Rate	\$11,770			

<b>E</b>	<b>Pay to FFA For Services Only</b>	<b>LOC-1</b>	<b>LOC-2</b>	<b>LOC-3</b>	<b>LOC-4</b>
	Social Worker	\$0	\$340	\$340	\$340
	Social Services & Support	\$0	\$200	\$244	\$323
	Administration	\$0	\$200	\$200	\$200
	<b>Total</b>	<b>\$0</b>	<b>\$740</b>	<b>\$784</b>	<b>\$863</b>

<sup>\*</sup>Please refer to the first tab titled "[Acronyms](#)" for a full description of acronyms.