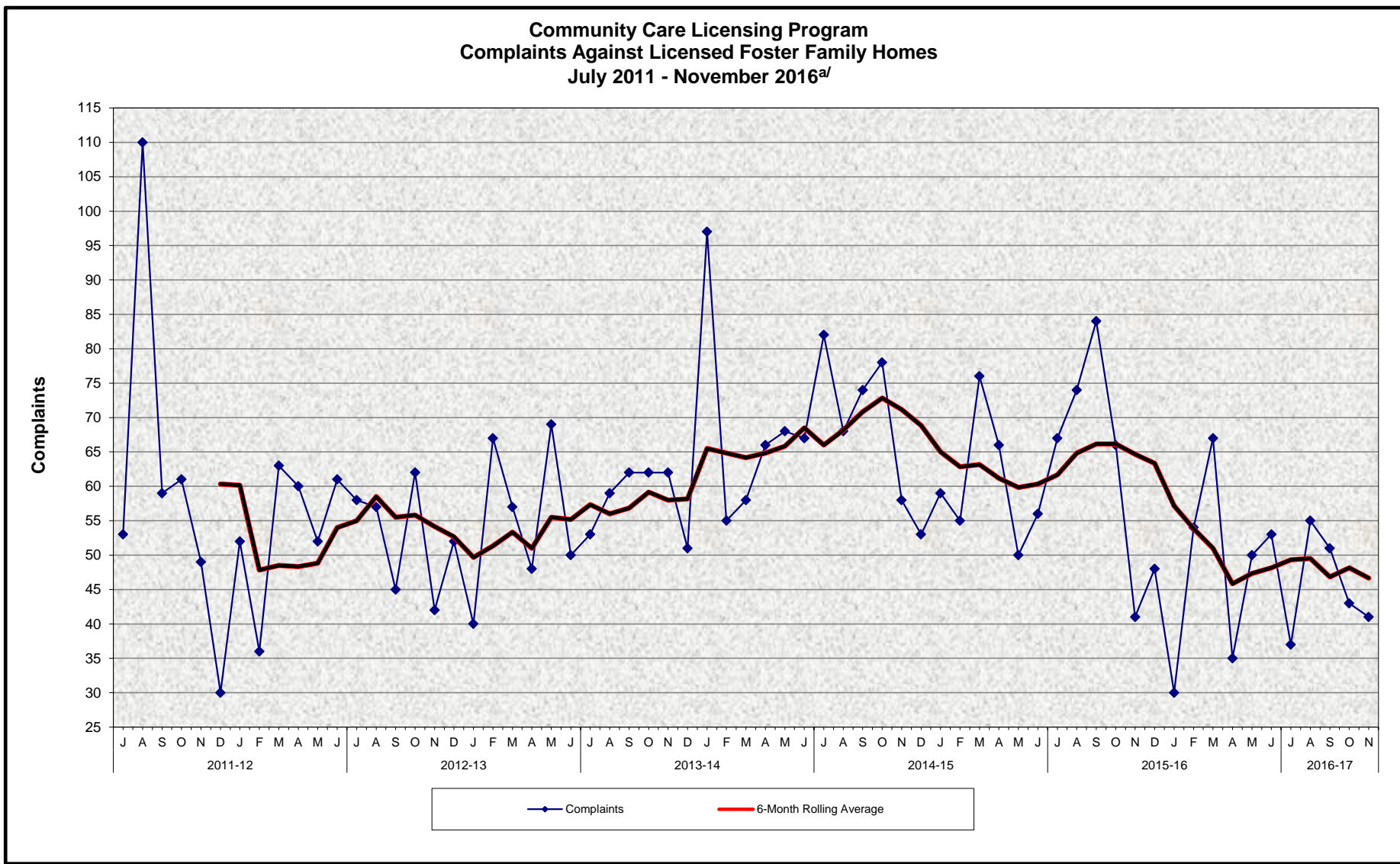


a/ See footnote on Page 3.  
 Source: LIC 181 (Item 5, Cell 22)



a/ See footnote on Page 3.  
 Source: LIC 181 (Item 14, Cell 49)

**Community Care Licensing Program  
Licenses in Force and Complaints Against Licensed Foster Family Homes<sup>a/</sup>  
July 2011 - November 2016**

**MONTHLY PERCENT CHANGE**

FY		Jul	% Chg	Aug	% Chg	Sep	% Chg	Oct	% Chg	Nov	% Chg	Dec	% Chg	Jan	% Chg	Feb	% Chg	Mar	% Chg	Apr	% Chg	May	% Chg	Jun	% Chg
11/12	Licenses	7,116		7,106	-0.1%	7,129	0.3%	7,137	0.1%	7,158	0.3%	7,148	-0.1%	7,115	-0.5%	7,138	0.3%	7,116	-0.3%	7,093	-0.3%	7,047	-0.6%	7,020	-0.4%
	Complaints	53		110	107.5%	59	-46.4%	61	3.4%	49	-19.7%	30	-38.8%	52	73.3%	36	-30.8%	63	75.0%	60	-4.8%	52	-13.3%	61	17.3%
12/13	Licenses	7,021	0.0%	7,001	-0.3%	6,982	-0.3%	6,977	-0.1%	6,987	0.1%	7,023	0.5%	7,007	-0.2%	6,789	-3.1%	6,770	-0.3%	6,749	-0.3%	6,775	0.4%	6,732	-0.6%
	Complaints	58	-4.9%	57	-1.7%	45	-21.1%	62	37.8%	42	-32.3%	52	23.8%	40	-23.1%	67	67.5%	57	-14.9%	48	-15.8%	69	43.8%	50	-27.5%
13/14	Licenses	6,681	-0.8%	6,647	-0.5%	6,634	-0.2%	6,630	-0.1%	6,672	0.6%	6,668	-0.1%	6,639	-0.4%	6,588	-0.8%	6,559	-0.4%	6,575	0.2%	6,548	-0.4%	6,474	-1.1%
	Complaints	53	6.0%	59	11.3%	62	5.1%	62	0.0%	62	0.0%	51	-17.7%	97	90.2%	55	-43.3%	58	5.5%	66	13.8%	68	3.0%	67	-1.5%
14/15	Licenses	6,471	0.0%	6,442	-0.4%	6,400	-0.7%	6,327	-1.1%	6,319	-0.1%	6,326	0.1%	6,317	-0.1%	6,314	0.0%	6,282	-0.5%	6,252	-0.5%	6,216	-0.6%	6,159	-0.9%
	Complaints	82	22.4%	68	-17.1%	74	8.8%	78	5.4%	58	-25.6%	53	-8.6%	59	11.3%	55	-6.8%	76	38.2%	66	-13.2%	50	-24.2%	56	12.0%
15/16	Licenses	6,113	-0.7%	6,075	-0.6%	6,033	-0.7%	5,995	-0.6%	5,975	-0.3%	5,957	-0.3%	5,911	-0.8%	5,891	-0.3%	5,861	-0.5%	5,849	-0.2%	5,778	-1.2%	5,741	-0.6%
	Complaints	67	19.6%	74	10.4%	84	13.5%	66	-21.4%	41	-37.9%	48	17.1%	30	-37.5%	54	80.0%	67	24.1%	35	-47.8%	50	42.9%	53	6.0%
16/17	Licenses	5,690	-0.9%	5,676	-0.2%	5,597	-1.4%	5,584	-0.2%	5,537	-0.8%														
	Complaints	37	-30.2%	55	48.6%	51	-7.3%	43	-15.7%	41	-4.7%														

**TRENDS**

- The number of licensed Foster Family Homes decreased 0.84% between October 2016 and November 2016.
- The number of licensed Foster Family Homes decreased 7.33% between November 2015 and November 2016.
- The number of complaints against Licensed Foster Family Homes decreased 4.65% between October 2016 and November 2016.
- The number of complaints against Licensed Foster Family Homes reflects NO CHANGE between November 2015 and November 2016.

<sup>a/</sup> As of July 2015, 38 counties are under contract with the California Department of Social Services (CDSS) to license Foster Family Homes and 2 counties are contracted to license Large and Small Family Child Care Homes (FCCH). CDSS conducts the licensing requirements for the remaining 20 counties. Effective October 2013, Sacramento returned FCCH licensing functions to the State. See page 4.

**Community Care Licensing Program**  
**Counties that License Foster Family Homes and Large and Small Family Child Care Homes**  
**July 2011 - November 2016**

	FY 11/12	FY 12/13	FY 13/14	FY 14/15	FY 15/16	FY 16/17
<b>Statewide</b>	<b>39</b>	<b>39</b>	<b>39</b>	<b>39</b>	<b>38</b>	<b>38</b>
Alameda	Yes	Yes	Yes	Yes	Yes	Yes
Alpine						
Amador						
Butte	Yes	Yes	Yes	Yes	Yes	Yes
Calaveras						
Colusa						
Contra Costa	Yes	Yes	Yes	Yes	Yes	Yes
Del Norte	Yes*	Yes*	Yes*	Yes*	Yes*	Yes*
El Dorado	Yes	Yes	Yes	Yes	Yes	Yes
Fresno	Yes	Yes	Yes	Yes	Yes	Yes
Glenn	Yes	Yes	Yes	Yes	Yes	Yes
Humboldt						
Imperial	Yes	Yes	Yes	Yes	Yes	Yes
Inyo	Yes*	Yes*	Yes*	Yes*	Yes*	Yes*
Kern	Yes	Yes	Yes	Yes	Yes	Yes
Kings	Yes	Yes	Yes	Yes	Yes	Yes
Lake						
Lassen						
Los Angeles						
Madera						
Marin	Yes	Yes	Yes	Yes	Yes	Yes
Mariposa	Yes	Yes	Yes	Yes	Yes	Yes
Mendocino						
Merced	Yes	Yes	Yes	Yes	Yes	Yes
Modoc						
Mono						
Monterey	Yes	Yes	Yes	Yes	Yes	Yes
Napa	Yes	Yes	Yes	Yes	Yes	Yes
Nevada						
Orange	Yes	Yes	Yes	Yes	Yes	Yes
Placer	Yes	Yes	Yes	Yes	Yes	Yes
Plumas						
Riverside						
Sacramento	Yes*	Yes*	Yes*	Yes	Yes	Yes
San Benito	Yes	Yes	Yes	Yes	Yes	Yes
San Bernardino	Yes	Yes	Yes	Yes	Yes	Yes
San Diego	Yes	Yes	Yes	Yes	Yes	Yes
San Francisco	Yes	Yes	Yes	Yes	Yes	Yes
San Joaquin	Yes	Yes	Yes	Yes	Yes	Yes
San Luis Obispo	Yes	Yes	Yes	Yes	Yes	Yes
San Mateo	Yes	Yes	Yes	Yes	Yes	Yes
Santa Barbara	Yes	Yes	Yes	Yes	Yes	Yes
Santa Clara	Yes	Yes	Yes	Yes	Yes	Yes
Santa Cruz	Yes	Yes	Yes	Yes	Yes	Yes
Shasta	Yes	Yes	Yes	Yes	Yes	Yes
Sierra						
Siskiyou	Yes	Yes	Yes	Yes		
Solano						
Sonoma	Yes	Yes	Yes	Yes	Yes	Yes
Stanislaus	Yes	Yes	Yes	Yes	Yes	Yes
Sutter	Yes	Yes	Yes	Yes	Yes	Yes
Tehama	Yes	Yes	Yes	Yes	Yes	Yes
Trinity						
Tulare	Yes	Yes	Yes	Yes	Yes	Yes
Tuolumne	Yes	Yes	Yes	Yes	Yes	Yes
Ventura	Yes	Yes	Yes	Yes	Yes	Yes
Yolo						
Yuba	Yes	Yes	Yes	Yes	Yes	Yes

\* Counties that also licensed Large and Small Family Child Care Homes.  
Source: LIC 181