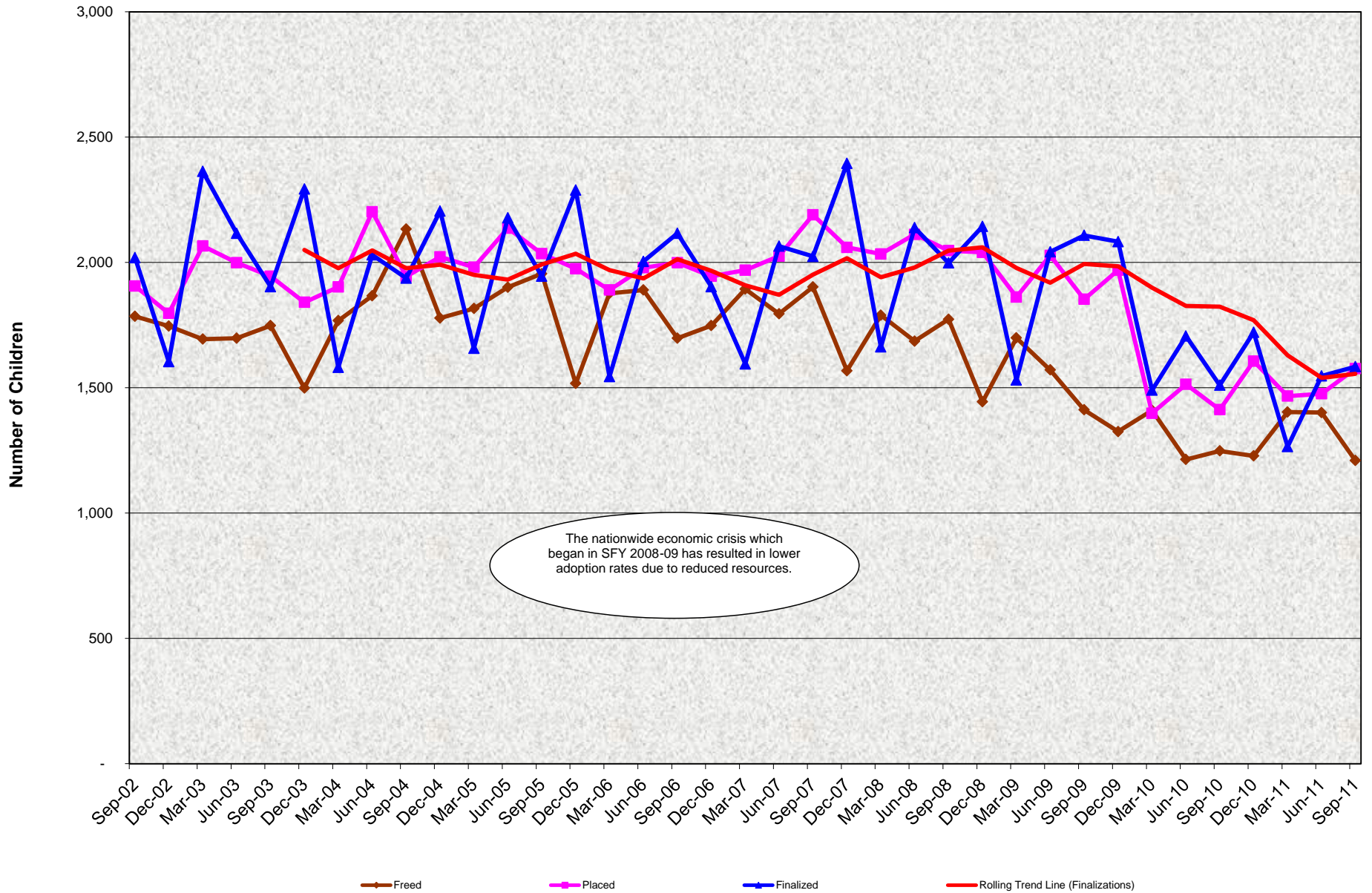


### Agency Adoption Program Freed for Adoption, Placed for Adoption, and Finalized Adoptions Quarterly Activity from September 2002 through September 2011



**Agency Adoption Program  
Freed for Adoption, Placed for Adoption, and Finalized Adoptions  
Quarterly Activity from September 2002 through September 2011**

**QUARTERLY PERCENT CHANGE**

FY		Jul-Sep Quarter	% Change	Oct - Dec Quarter	% Change	Jan - Mar Quarter	% Change	Apr - Jun Quarter	% Change
02/03	Freed	1,785	-9.6%	1,746	-2.2%	1,694	-3.0%	1,698	0.2%
	Placed	1,906	-13.2%	1,797	-5.7%	2,066	15.0%	1,999	-3.2%
	Finalized	2,019	-6.4%	1,604	-20.6%	2,363	47.3%	2,116	-10.5%
03/04	Freed	1,748	2.9%	1,499	-14.2%	1,768	17.9%	1,867	5.6%
	Placed	1,945	-2.7%	1,841	-5.3%	1,902	3.3%	2,202	15.8%
	Finalized	1,903	-10.1%	2,293	20.5%	1,581	-31.1%	2,030	28.4%
04/05	Freed	2,133	14.2%	1,778	-16.6%	1,816	2.1%	1,901	4.7%
	Placed	1,944	-11.7%	2,022	4.0%	1,981	-2.0%	2,137	7.9%
	Finalized	1,937	-4.6%	2,205	13.8%	1,657	-24.9%	2,178	31.4%
05/06	Freed	1,955	2.8%	1,517	-22.4%	1,877	23.7%	1,890	0.7%
	Placed	2,035	-4.8%	1,975	-2.9%	1,890	-4.3%	1,979	4.7%
	Finalized	1,945	-10.7%	2,289	17.7%	1,544	-32.5%	2,004	29.8%
06/07	Freed	1,698	-10.2%	1,748	3%	1,894	28.1%	1,795	-5.2%
	Placed	1,999	1.0%	1,945	-3%	1,969	1.1%	2,025	2.8%
	Finalized	2,116	5.6%	1,903	-10%	1,595	-26.4%	2,065	29.5%
07/08	Freed	1,902	-17.6%	1,568	-18%	1,789	14.1%	1,686	-5.8%
	Placed	2,190	-5.9%	2,060	-6%	2,034	-1.3%	2,112	3.8%
	Finalized	2,024	18.3%	2,395	18%	1,663	-30.6%	2,139	28.6%
08/09	Freed	1,773	5.2%	1,444	-19%	1,699	17.7%	1,571	-7.5%
	Placed	2,047	-3.1%	2,040	0%	1,862	-8.7%	2,028	8.9%
	Finalized	1,998	-6.6%	2,144	7%	1,531	-28.6%	2,042	33.4%
09/10	Freed	1,412	-10.1%	1,325	-6%	1,410	6.4%	1,214	-13.9%
	Placed	1,853	-8.6%	1,969	6%	1,398	-29.0%	1,514	8.3%
	Completed	2,108	3.2%	2,083	-1%	1,480	-28.9%	1,706	15.3%
10/11	Freed	1,248	2.8%	1,228	-2%	1,403	14.3%	1,401	-0.1%
	Placed	1,413	-6.7%	1,606	14%	1,467	-8.7%	1,476	0.6%
	Completed	1,510	-11.5%	1,721	14%	1,265	-26.5%	1,547	22.3%
11/12	Freed	1,210	-13.6%						
	Placed	1,576	6.6%						
	Completed	1,584	2.4%						

**Agency Adoption Program**  
**Freed for Adoption, Placed for Adoption, and Finalized Adoptions**  
**Quarterly Activity from September 2002 through September 2011**

**TRENDS**

- Due to the nationwide economic downturn which began SFY 2008-09, there are now fewer adoptions due to reduced resources.
- Because the adoption process requires time, the number of finalized adoptions in one year reflects freeing actions and adoptive placements in prior years.
- Typically, more adoptions are processed at the end of the fiscal year resulting in an annual cyclical peak in adoption activity.