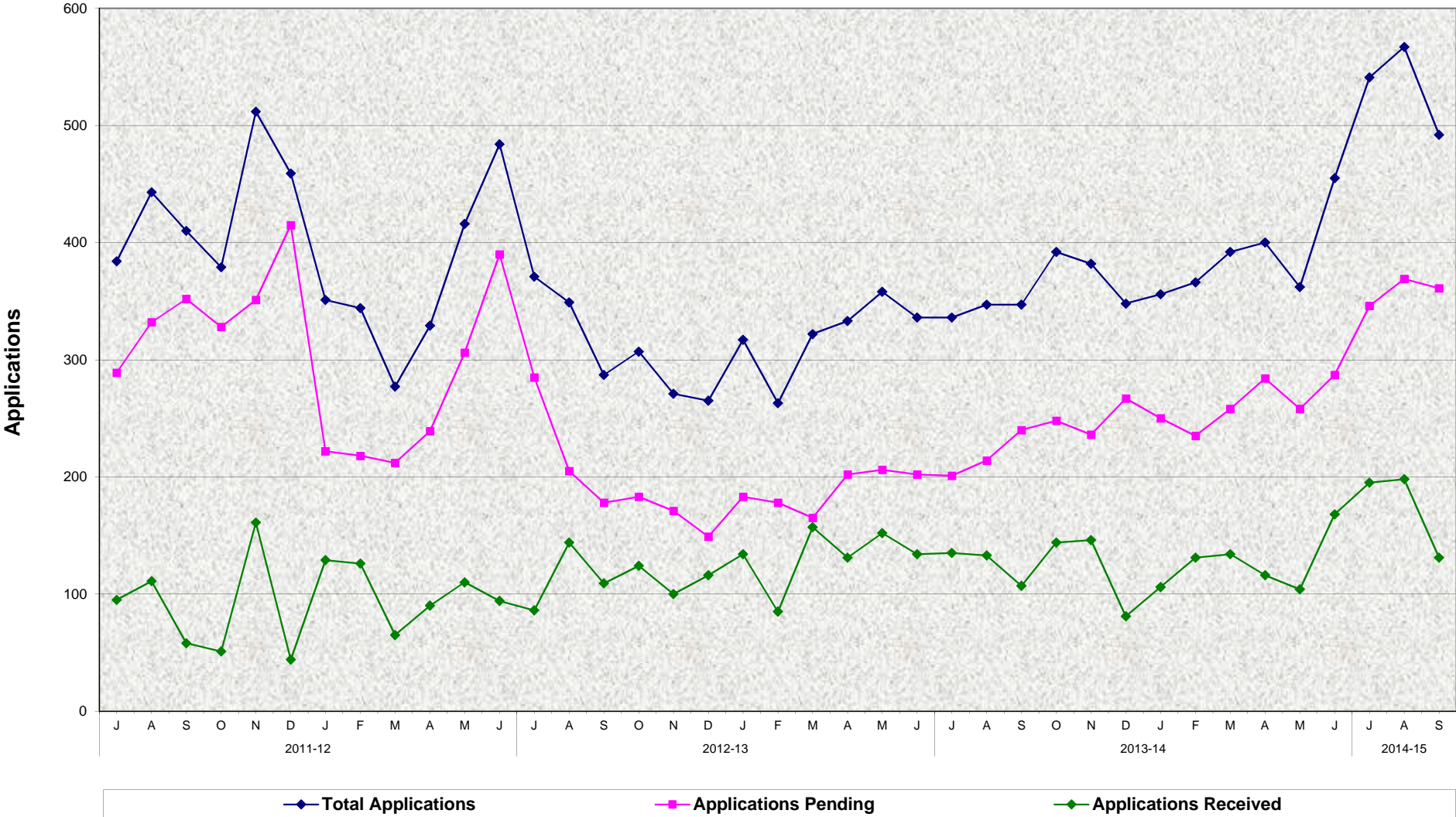


Kinship Guardianship Assistance Payment Program (Kin-GAP) - Federal Only Total Applications, Applications Pending and Applications Received July 2011 - September 2014



Kinship Guardianship Assistance Payment Program (Kin-GAP) - Federal Only
Total Applications, Applications Pending and Applications Received
July 2011 - September 2014

MONTHLY PERCENT CHANGE

		Jul	% Chg	Aug	% Chg	Sep	% Chg	Oct	% Chg	Nov	% Chg	Dec	% Chg	Jan	% Chg	Feb	% Chg	Mar	% Chg	Apr	% Chg	May	% Chg	Jun	% Chg
11/12	Total Apps.	384		443	15.4%	410	-7.4%	379	-7.6%	512	35.1%	459	-10.4%	351	-23.5%	344	-2.0%	277	-19.5%	329	18.8%	416	26.4%	484	16.3%
	Apps. Pending	289		332	14.9%	352	6.0%	328	-6.8%	351	7.0%	415	18.2%	222	-46.5%	218	-1.8%	212	-2.8%	239	12.7%	306	28.0%	390	27.5%
	Apps. Recvd	95		111	16.8%	58	-47.7%	51	-12.1%	161	215.7%	44	-72.7%	129	193.2%	126	-2.3%	65	-48.4%	90	38.5%	110	22.2%	94	-14.5%
12/13	Total Apps.	371	-23.3%	349	-5.9%	287	-17.8%	307	7.0%	271	-11.7%	265	-2.2%	317	19.6%	263	-17.0%	322	22.4%	333	3.4%	358	7.5%	336	-6.1%
	Apps. Pending	285	-26.9%	205	-28.1%	178	-13.2%	183	2.8%	171	-6.6%	149	-12.9%	183	22.8%	178	-2.7%	165	-7.3%	202	22.4%	206	2.0%	202	-1.9%
	Apps. Recvd	86	-8.5%	144	67.4%	109	-24.3%	124	13.8%	100	-19.4%	116	16.0%	134	15.5%	85	-36.6%	157	84.7%	131	-16.6%	152	16.0%	134	-11.8%
13/14	Total Apps.	336	0.0%	347	3.3%	347	0.0%	392	13.0%	382	-2.6%	348	-8.9%	356	2.3%	366	2.8%	392	7.1%	400	2.0%	362	-9.5%	455	25.7%
	Apps. Pending	201	-0.5%	214	6.5%	240	12.1%	248	3.3%	236	-4.8%	267	13.1%	250	-6.4%	235	-6.0%	258	9.8%	284	10.1%	258	-9.2%	287	11.2%
	Apps. Recvd	135	0.7%	133	-1.5%	107	-19.5%	144	34.6%	146	1.4%	81	-44.5%	106	30.9%	131	23.6%	134	2.3%	116	-13.4%	104	-10.3%	168	61.5%
14/15	Total Apps.	541	18.9%	567	4.8%	492	-13.2%	0	-100.0%	0	#DIV/0!	0	#DIV/0!	0	#DIV/0!	0	#DIV/0!	0	#DIV/0!	0	#DIV/0!	0	#DIV/0!	0	#DIV/0!
	Apps. Pending	346	20.6%	369	6.6%	361	-2.2%																		
	Apps. Recvd	195	16.1%	198	1.5%	131	-33.8%																		

TRENDS

● **Total Applications:**

Kin-GAP Federal total applications decreased 13.2% between August 2014 and September 2014
Kin-GAP Federal total applications increased 41.8% between September 2013 and September 2014

● **Applications Pending:**

Kin-GAP Federal applications pending decreased 2.2% between August 2014 and September 2014
Kin-GAP Federal applications pending increased 50.4% between September 2013 and September 2014

● **Applications Received:**

Kin-GAP Federal applications received decreased 33.8% between August 2014 and September 2014
Kin-GAP Federal applications received increased 22.4% between September 2013 and September 2014.