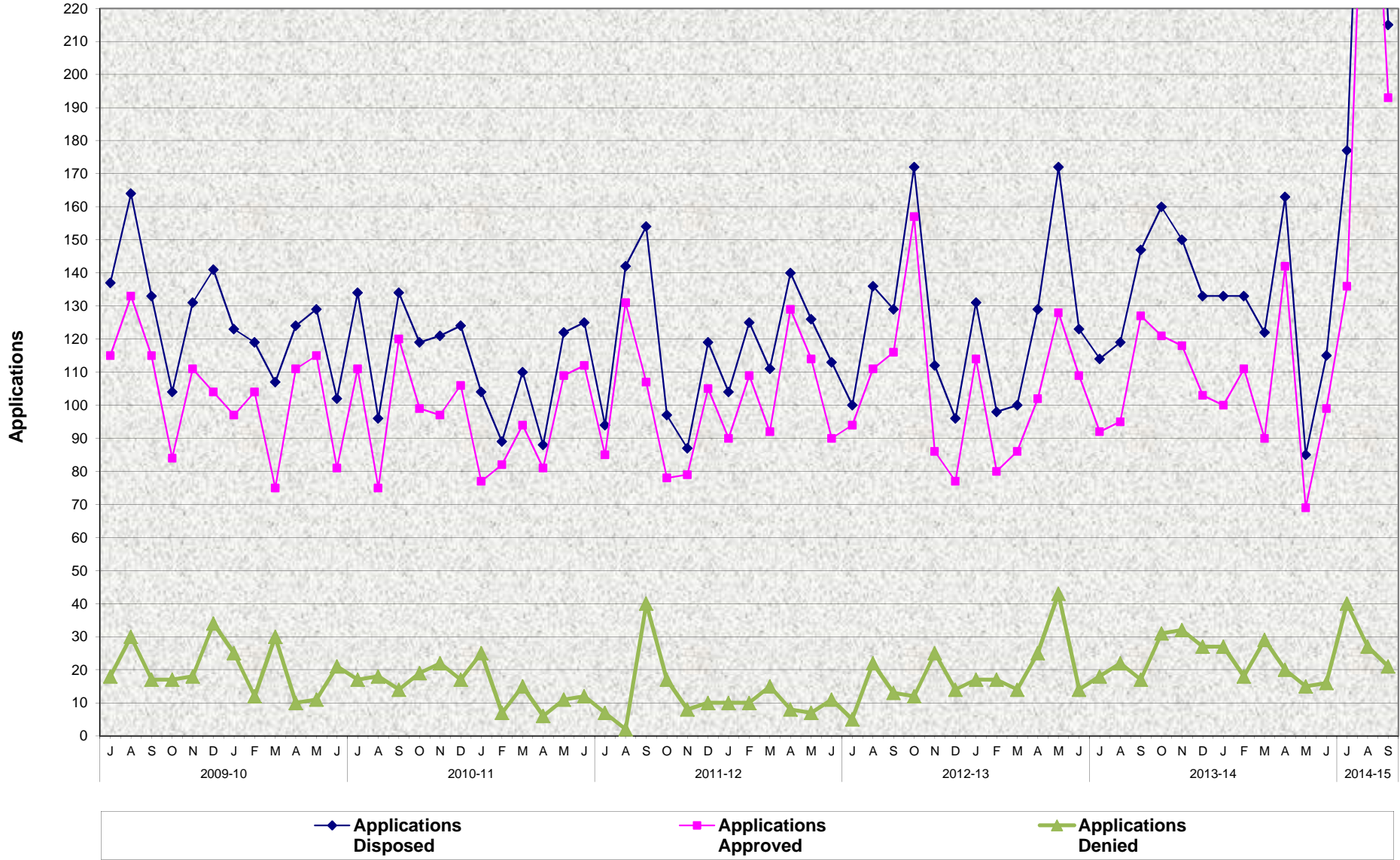


### Kinship Guardianship Assistance Payment Program (Kin-GAP) - State Only Applications Disposed, Applications Approved and Application Denied July 2009 - September 2014



Source: CA 237 KG, Items 4, 4a and 4b.

Released: October 28, 2014

**Kinship Guardianship Assistance Payment Program (Kin-GAP) - State Only**  
**Applications Disposed, Applications Approved and Applications Denied**  
**July 2009 - September 2014**

**MONTHLY PERCENT CHANGE**

FY		Jul	% Chg	Aug	% Chg	Sep	% Chg	Oct	% Chg	Nov	% Chg	Dec	% Chg	Jan	% Chg	Feb	% Chg	Mar	% Chg	Apr	% Chg	May	% Chg	Jun	% Chg
09/10	Apps. Dispsd.	137		164	19.7%	133	-18.9%	104	-21.8%	131	26.0%	141	7.6%	123	-12.8%	119	-3.3%	107	-10.1%	124	15.9%	129	4.0%	102	-20.9%
	Apps. Apprvd.	115		133	15.7%	115	-13.5%	84	-27.0%	111	32.1%	104	-6.3%	97	-6.7%	104	7.2%	75	-27.9%	111	48.0%	115	3.6%	81	-29.6%
	Apps. Denied	18		30	66.7%	17	-43.3%	17	0.0%	18	5.9%	34	88.9%	25	-26.5%	12	-52.0%	30	150.0%	10	-66.7%	11	10.0%	21	90.9%
10/11	Apps. Dispsd.	134	31.4%	96	-28.4%	134	39.6%	119	-11.2%	121	1.7%	124	2.5%	104	-16.1%	89	-14.4%	110	23.6%	88	-20.0%	122	38.6%	125	2.5%
	Apps. Apprvd.	111	37.0%	75	-32.4%	120	60.0%	99	-17.5%	97	-2.0%	106	9.3%	77	-27.4%	82	6.5%	94	14.6%	81	-13.8%	109	34.6%	112	2.8%
	Apps. Denied	17	-19.0%	18	5.9%	14	-22.2%	19	35.7%	22	15.8%	17	-22.7%	25	47.1%	7	-72.0%	15	114.3%	6	-60.0%	11	83.3%	12	9.1%
11/12	Apps. Dispsd.	94	-24.8%	142	51.1%	154	8.5%	97	-37.0%	87	-10.3%	119	36.8%	104	-12.6%	125	20.2%	111	-11.2%	140	26.1%	126	-10.0%	113	-10.3%
	Apps. Apprvd.	85	-24.1%	131	54.1%	107	-18.3%	78	-27.1%	79	1.3%	105	32.9%	90	-14.3%	109	21.1%	92	-15.6%	129	40.2%	114	-11.6%	90	-21.1%
	Apps. Denied	7	-41.7%	2	-71.4%	40	1900.0%	17	-57.5%	8	-52.9%	10	25.0%	10	0.0%	10	0.0%	15	50.0%	8	-46.7%	7	-12.5%	11	57.1%
12/13	Apps. Dispsd.	100	-11.5%	136	36.0%	129	-5.1%	172	33.3%	112	-34.9%	96	-14.3%	131	36.5%	98	-25.2%	100	2.0%	129	29.0%	172	33.3%	123	-28.5%
	Apps. Apprvd.	94	4.4%	111	18.1%	116	4.5%	157	35.3%	86	-45.2%	77	-10.5%	114	48.1%	80	-29.8%	86	7.5%	102	18.6%	128	25.5%	109	-14.8%
	Apps. Denied	5	-54.5%	22	340.0%	13	-40.9%	12	-7.7%	25	108.3%	14	-44.0%	17	21.4%	17	0.0%	14	-17.6%	25	78.6%	43	72.0%	14	-67.4%
13/14	Apps. Dispsd.	114	-7.3%	119	4.4%	147	23.5%	160	8.8%	150	-6.3%	133	-11.3%	133	0.0%	133	0.0%	122	-8.3%	163	33.6%	85	-47.9%	115	35.3%
	Apps. Apprvd.	92	-15.6%	95	3.3%	127	33.7%	121	-4.7%	118	-2.5%	103	-12.7%	100	-2.9%	111	11.0%	90	-18.9%	142	57.8%	69	-51.4%	99	43.5%
	Apps. Denied	18	28.6%	22	22.2%	17	-22.7%	31	82.4%	32	3.2%	27	-15.6%	27	0.0%	18	-33.3%	29	61.1%	20	-31.0%	15	-25.0%	16	6.7%
14/15	Apps. Dispsd.	177	53.9%	340	92.1%	215	-36.8%	0	-100.0%	0	#DIV/0!	0	#DIV/0!	0	#DIV/0!	0	#DIV/0!	0	#DIV/0!	0	#DIV/0!	0	#DIV/0!	0	#DIV/0!
	Apps. Apprvd.	136	37.4%	308	126.5%	193	-37.3%																		
	Apps. Denied	40	150.0%	27	-32.5%	21	-22.2%																		

**TRENDS**

● **Applications Disposed:**

Kin-GAP State applications disposed decreased 36.8% between August 2014 and September 2014.  
Kin-GAP State applications disposed increased 46.3% between September 2013 and September 2014.

● **Applications Approved:**

Kin-GAP State applications approved decreased 37.3% between August 2014 and September 2014.  
Kin-GAP State applications approved increased 52.0% between September 2013 and September 2014.

● **Applications Denied:**

Kin-GAP State applications denied decreased 22.2% between August 2014 and September 2014.  
Kin-GAP State applications denied increased 23.5% between September 2013 and September 2014.