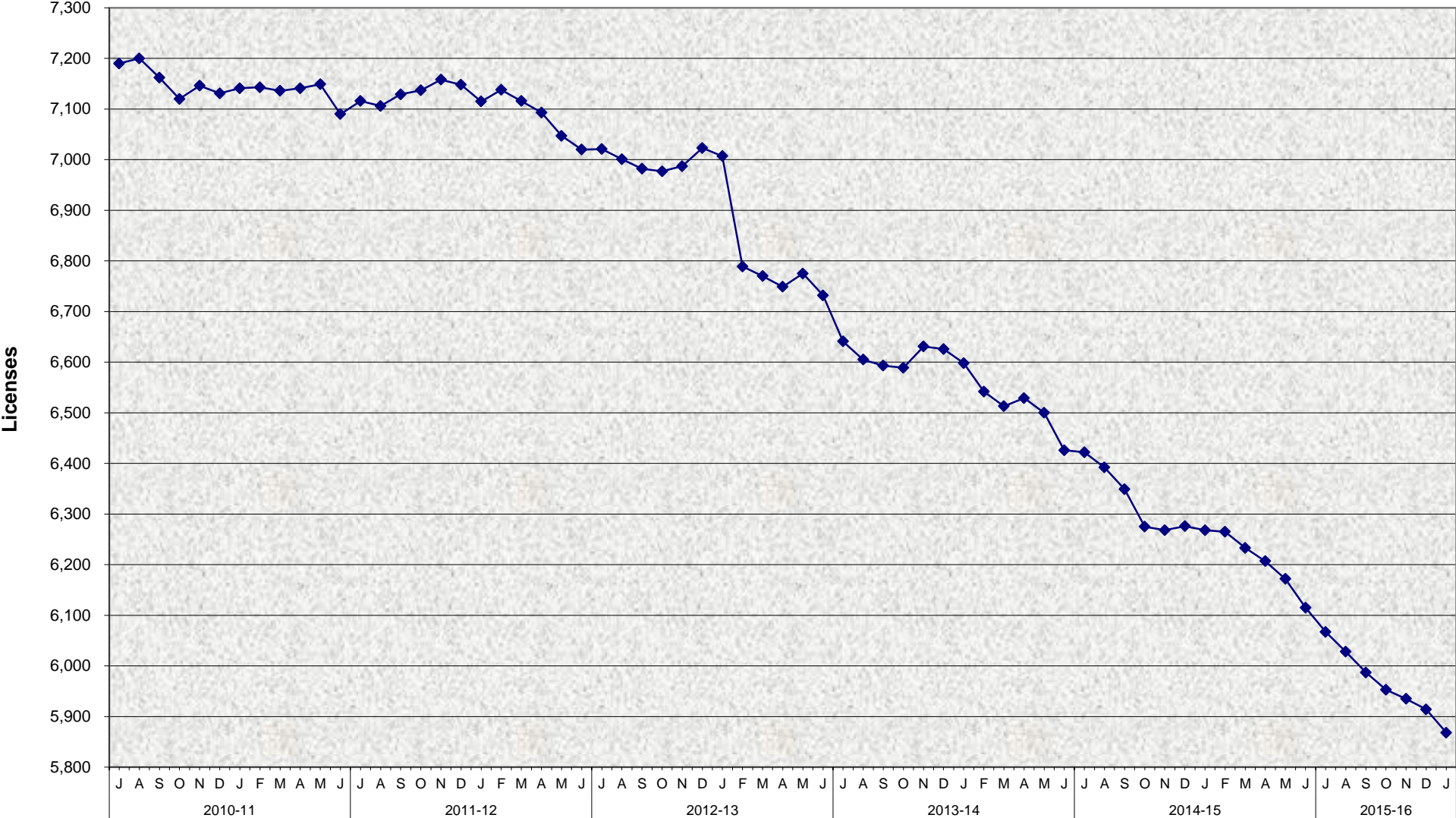
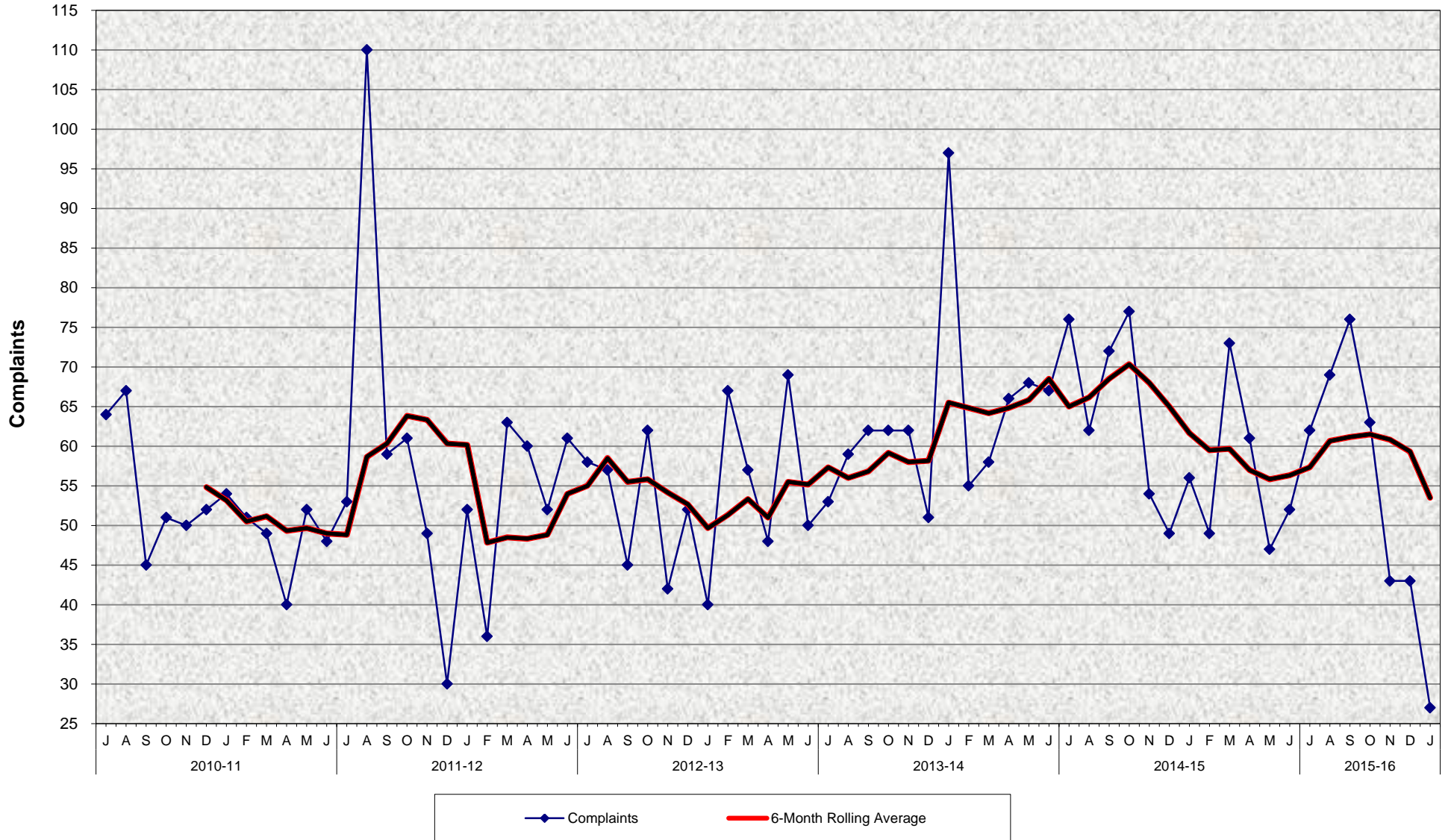


Community Care Licensing Program Licenses in Force for Licensed Foster Family Homes July 2010 - January 2016^{a/}



^{a/} See footnote on Page 3.
Source: LIC 181 (Item 5, Cell 22)

Community Care Licensing Program Complaints Against Licensed Foster Family Homes July 2010 - January 2016^{a/}



^{a/} See footnote on Page 3.
 Source: LIC 181 (Item 14, Cell 49)

**Community Care Licensing Program
Licenses in Force and Complaints Against Licensed Foster Family Homes
July 2010 - January 2016^{a/}**

MONTHLY PERCENT CHANGE

| FY | | Jul | % Chg | Aug | % Chg | Sep | % Chg | Oct | % Chg | Nov | % Chg | Dec | % Chg | Jan | % Chg | Feb | % Chg | Mar | % Chg | Apr | % Chg | May | % Chg | Jun | % Chg |
|-------|------------|-------|-------|-------|--------|-------|--------|-------|--------|-------|--------|-------|--------|-------|--------|-------|--------|-------|--------|-------|--------|-------|--------|-------|--------|
| 10/11 | Licenses | 7,190 | | 7,200 | 0.1% | 7,162 | -0.5% | 7,120 | -0.6% | 7,146 | 0.4% | 7,131 | -0.2% | 7,141 | 0.1% | 7,143 | 0.0% | 7,136 | -0.1% | 7,141 | 0.1% | 7,149 | 0.1% | 7,090 | -0.8% |
| | Complaints | 64 | | 67 | 4.7% | 45 | -32.8% | 51 | 13.3% | 50 | -2.0% | 52 | 4.0% | 54 | 3.8% | 51 | -5.6% | 49 | -3.9% | 40 | -18.4% | 52 | 30.0% | 48 | -7.7% |
| 11/12 | Licenses | 7,116 | 0.4% | 7,106 | -0.1% | 7,129 | 0.3% | 7,137 | 0.1% | 7,158 | 0.3% | 7,148 | -0.1% | 7,115 | -0.5% | 7,138 | 0.3% | 7,116 | -0.3% | 7,093 | -0.3% | 7,047 | -0.6% | 7,020 | -0.4% |
| | Complaints | 53 | 10.4% | 110 | 107.5% | 59 | -46.4% | 61 | 3.4% | 49 | -19.7% | 30 | -38.8% | 52 | 73.3% | 36 | -30.8% | 63 | 75.0% | 60 | -4.8% | 52 | -13.3% | 61 | 17.3% |
| 12/13 | Licenses | 7,021 | 0.0% | 7,001 | -0.3% | 6,982 | -0.3% | 6,977 | -0.1% | 6,987 | 0.1% | 7,023 | 0.5% | 7,007 | -0.2% | 6,789 | -3.1% | 6,770 | -0.3% | 6,749 | -0.3% | 6,775 | 0.4% | 6,732 | -0.6% |
| | Complaints | 58 | -4.9% | 57 | -1.7% | 45 | -21.1% | 62 | 37.8% | 42 | -32.3% | 52 | 23.8% | 40 | -23.1% | 67 | 67.5% | 57 | -14.9% | 48 | -15.8% | 69 | 43.8% | 50 | -27.5% |
| 13/14 | Licenses | 6,641 | -1.4% | 6,605 | -0.5% | 6,593 | -0.2% | 6,589 | -0.1% | 6,631 | 0.6% | 6,626 | -0.1% | 6,598 | -0.4% | 6,542 | -0.8% | 6,513 | -0.4% | 6,529 | 0.2% | 6,500 | -0.4% | 6,426 | -1.1% |
| | Complaints | 53 | 6.0% | 59 | 11.3% | 62 | 5.1% | 62 | 0.0% | 62 | 0.0% | 51 | -17.7% | 97 | 90.2% | 55 | -43.3% | 58 | 5.5% | 66 | 13.8% | 68 | 3.0% | 67 | -1.5% |
| 14/15 | Licenses | 6,422 | -0.1% | 6,392 | -0.5% | 6,349 | -0.7% | 6,275 | -1.2% | 6,268 | -0.1% | 6,276 | 0.1% | 6,268 | -0.1% | 6,265 | 0.0% | 6,233 | -0.5% | 6,207 | -0.4% | 6,172 | -0.6% | 6,115 | -0.9% |
| | Complaints | 76 | 13.4% | 62 | -18.4% | 72 | 16.1% | 77 | 6.9% | 54 | -29.9% | 49 | -9.3% | 56 | 14.3% | 49 | -12.5% | 73 | 49.0% | 61 | -16.4% | 47 | -23.0% | 52 | 10.6% |
| 15/16 | Licenses | 6,067 | -0.8% | 6,028 | -0.6% | 5,987 | -0.7% | 5,953 | -0.6% | 5,935 | -0.3% | 5,914 | -0.4% | 5,868 | -0.8% | | | | | | | | | | |
| | Complaints | 62 | 19.2% | 69 | 11.3% | 76 | 10.1% | 63 | -17.1% | 43 | -31.7% | 43 | 0.0% | 27 | -37.2% | | | | | | | | | | |

TRENDS

- The number of licensed Foster Family Homes decreased by 0.8% between December 2015 and January 2016.
- The number of licensed Foster Family Homes decreased by 6.4% between January 2015 and January 2016.
- The number of complaints against Licensed Foster Family Homes decreased by 37.2% between December 2015 and January 2016.
- The number of complaints against Licensed Foster Family Homes decreased by 51.8% between January 2015 and January 2016.

a/ As of July 2015, 38 counties are under contract with the California Department of Social Services (CDSS) to license Foster Family Homes and 2 counties are contracted to license Large and Small Family Child Care Homes (FCCH). CDSS conducts the licensing requirements for the remaining 20 counties. Effective October 2013, Sacramento returned FCCH licensing functions to the State. See page 4.

Community Care Licensing Program
Counties that License Foster Family Homes and Large and Small Family Child Care Homes
July 2010 - January 2016

| | FY 10/11 | FY 11/12 | FY 12/13 | FY 13/14 | FY 14/15 | FY 15/16 |
|------------------|-----------|-----------|-----------|-----------|-----------|-----------|
| Statewide | 39 | 39 | 39 | 39 | 39 | 38 |
| Alameda | Yes | Yes | Yes | Yes | Yes | Yes |
| Alpine | | | | | | |
| Amador | | | | | | |
| Butte | Yes | Yes | Yes | Yes | Yes | Yes |
| Calaveras | | | | | | |
| Colusa | | | | | | |
| Contra Costa | Yes | Yes | Yes | Yes | Yes | Yes |
| Del Norte | Yes* | Yes* | Yes* | Yes* | Yes* | Yes* |
| El Dorado | Yes | Yes | Yes | Yes | Yes | Yes |
| Fresno | Yes | Yes | Yes | Yes | Yes | Yes |
| Glenn | Yes | Yes | Yes | Yes | Yes | Yes |
| Humboldt | | | | | | |
| Imperial | Yes | Yes | Yes | Yes | Yes | Yes |
| Inyo | Yes* | Yes* | Yes* | Yes* | Yes* | Yes* |
| Kern | Yes | Yes | Yes | Yes | Yes | Yes |
| Kings | Yes | Yes | Yes | Yes | Yes | Yes |
| Lake | | | | | | |
| Lassen | | | | | | |
| Los Angeles | | | | | | |
| Madera | | | | | | |
| Marin | Yes | Yes | Yes | Yes | Yes | Yes |
| Mariposa | Yes | Yes | Yes | Yes | Yes | Yes |
| Mendocino | | | | | | |
| Merced | Yes | Yes | Yes | Yes | Yes | Yes |
| Modoc | | | | | | |
| Mono | | | | | | |
| Monterey | Yes | Yes | Yes | Yes | Yes | Yes |
| Napa | Yes | Yes | Yes | Yes | Yes | Yes |
| Nevada | | | | | | |
| Orange | Yes | Yes | Yes | Yes | Yes | Yes |
| Placer | Yes | Yes | Yes | Yes | Yes | Yes |
| Plumas | | | | | | |
| Riverside | | | | | | |
| Sacramento | Yes* | Yes* | Yes* | Yes* | Yes | Yes |
| San Benito | Yes | Yes | Yes | Yes | Yes | Yes |
| San Bernardino | Yes | Yes | Yes | Yes | Yes | Yes |
| San Diego | Yes | Yes | Yes | Yes | Yes | Yes |
| San Francisco | Yes | Yes | Yes | Yes | Yes | Yes |
| San Joaquin | Yes | Yes | Yes | Yes | Yes | Yes |
| San Luis Obispo | Yes | Yes | Yes | Yes | Yes | Yes |
| San Mateo | Yes | Yes | Yes | Yes | Yes | Yes |
| Santa Barbara | Yes | Yes | Yes | Yes | Yes | Yes |
| Santa Clara | Yes | Yes | Yes | Yes | Yes | Yes |
| Santa Cruz | Yes | Yes | Yes | Yes | Yes | Yes |
| Shasta | Yes | Yes | Yes | Yes | Yes | Yes |
| Sierra | | | | | | |
| Siskiyou | Yes | Yes | Yes | Yes | Yes | |
| Solano | | | | | | |
| Sonoma | Yes | Yes | Yes | Yes | Yes | Yes |
| Stanislaus | Yes | Yes | Yes | Yes | Yes | Yes |
| Sutter | Yes | Yes | Yes | Yes | Yes | Yes |
| Tehama | Yes | Yes | Yes | Yes | Yes | Yes |
| Trinity | | | | | | |
| Tulare | Yes | Yes | Yes | Yes | Yes | Yes |
| Tuolumne | Yes | Yes | Yes | Yes | Yes | Yes |
| Ventura | Yes | Yes | Yes | Yes | Yes | Yes |
| Yolo | | | | | | |
| Yuba | Yes | Yes | Yes | Yes | Yes | Yes |

* Counties that also licensed Large and Small Family Child Care Homes.
 Source: LIC 181