

Public Assistance Facts and Figures

November 16, 2000

June 2000

Cash Grant Programs	Recipients				Average Monthly Benefits	
	June 2000	Change from May 2000	Percent Change from		June 2000	June 1999
			May 2000	June 1999		
Total cash grant recipients a/.....	2,779,485	(4,455)	12.0	5.0	\$ xxxxxx	\$ xxxxxx
California Work Opportunity and Responsibility to Kids (CalWORKs) - persons b/.....	1,540,954	(3,414)	(0.2)	(11.2)	xxxxxx	xxxxxx
Children.....	1,141,585	(1,568)	(0.1)	(9.7)	xxxxxx	xxxxxx
Cases.....	545,958	(2,424)	(0.4)	(10.1)	486.09	362.14
CalWORKs payments (\$ in millions).....	\$265.4	(\$3.4)	(1.3)	20.7	xxxxxx	xxxxxx
Two Parent Families - persons.....	274,749	(1,027)	(0.4)	c/	xxxxxx	xxxxxx
Children.....	167,893	(490)	(0.3)	c/	xxxxxx	xxxxxx
Cases.....	63,167	(407)	(0.6)	c/	505.65	c/
Payments (\$ in millions).....	\$31.9	(\$0.8)	(2.6)	c/	xxxxxx	xxxxxx
Zero Parent Families - persons.....	278,576	994	0.4	c/	xxxxxx	xxxxxx
Children.....	278,576	994	0.4	c/	xxxxxx	xxxxxx
Cases.....	145,570	221	0.2	c/	478.78	c/
Payments (\$ in millions).....	\$69.7	(\$0.4)	(0.6)	c/	xxxxxx	xxxxxx
All Other Families - persons.....	987,629	(3,381)	(0.3)	c/	xxxxxx	xxxxxx
Children.....	695,116	(2,072)	(0.3)	c/	xxxxxx	xxxxxx
Cases.....	337,221	(2,238)	(0.7)	c/	485.58	c/
Payments (\$ in millions).....	\$163.7	(\$2.1)	(1.3)	c/	xxxxxx	xxxxxx
Foster Care Program (FC) - children d/.....	84,322	990	1.2	(3.0)	1,221.99	1,186.92
Foster Family Home Placements.....	56,712	(262)	(0.5)	9.8	604.60	549.89
Foster Family Agency Placements.....	17,378	1,220	7.6	(23.7)	1,634.65	1,471.93
Group Home Placements.....	10,232	32	0.3	(18.1)	4,567.40	3,671.78
Foster Care Payments (\$ in millions).....	\$103.0	(\$3.22)	(3.0)	(0.1)	xxxxxx	xxxxxx
Supplemental Security Income/State Supplementary Payment (SSI/SSP) - persons e/.....	1,071,229	(492)	(0.0)	2.1	xxxxxx	xxxxxx
Aged.....	331,405	101	0.0	1.5	444.88	435.96
Blind.....	21,843	(48)	(0.2)	(0.2)	546.27	539.93
Disabled.....	717,981	(545)	(0.1)	2.5	528.57	529.83
SSI/SSP payments (\$ in millions).....	\$538.9	(\$16.1)	(2.9)	2.6	xxxxxx	xxxxxx
General Relief (GR) - persons.....	82,980	(1,539)	(1.8)	(14.8)	263.82	231.13
	June 2000	May 2000	June 1999			
California unemployment rate (seasonally adjusted).....	5.2%	5.1%	5.2%			
California population on assistance a/.....	9.0	8.1	87.3			

a/ Persons receiving CalWORKs, FC, SSI/SSP, or GR.

b/ All CalWORKs data is for cash grant cases only.

c/ Effective with the October 1999 report month, the source form (CA 237 CalWORKs) was changed to collect families data. Comparison to prior year data and prior year average monthly benefits will appear on the October 2000 PAFF.

d/ Number of children for whom foster care payments have been made. Does not include services only children.

e/ Estimate based on preliminary data from the Social Security Administration.

Data represents the most current statistics available at the time of publication. Current month includes prior period and preliminary data if current month is not reported timely by CWD. Prior period data is updated to include the most current information, including county reported changes/updates.

For additional information, contact Data Analysis and Publications Branch at (916) 653-4180, via the Internet at infosrv@dss.ca.gov, or visit our web site at: <http://www.dss.cahwnet.gov/research/default.htm>

Non-Cash Grant Programs	Recipients				Average Monthly Benefits	
	June 2000	Change from	Percent Change from		June 2000	June 1999
		May 2000	May 2000	June 1999		
					\$	\$
					<i>Average Coupon Value</i>	
Federal Food Stamp (FS) Program						
Persons.....	1,789,667	(3,210)	(0.2)	(9.6)	72.69	71.75
Assistance: persons.....	1,180,606	(3,639)	(0.3)	(11.1)	xxxxxx	xxxxxx
households f/.....	395,707	(1,707)	(0.4)	(11.4)	xxxxxx	xxxxxx
Nonassistance: persons.....	609,061	429	0.1	(6.6)	xxxxxx	xxxxxx
households f/.....	260,169	(1,182)	(0.5)	(8.2)	xxxxxx	xxxxxx
Expenditures paid (\$ in millions).....	\$130.1	(\$0.3)	(0.2)	(8.4)	xxxxxx	xxxxxx
California Food Assistance Program (CFAP)						
Persons.....	84,533	(1,503)	(1.7)	(9.4)	47.82	44.23
Assistance: persons.....	53,579	(1,548)	(2.8)	(20.9)	xxxxxx	xxxxxx
households g/.....	14,166	(166)	(1.2)	(18.5)	xxxxxx	xxxxxx
Nonassistance: persons.....	30,954	45	0.1	21.1	xxxxxx	xxxxxx
households g/.....	12,015	(75)	(0.6)	14.5	xxxxxx	xxxxxx
Expenditures paid (\$ in millions).....	\$4.0	(\$0.0)	(0.9)	(2.1)	xxxxxx	xxxxxx
					<i>Average Cost Per Person h/</i>	
In-Home Supportive Services (IHSS)						
Cases open at end of month.....	238,311	1,721	0.7	7.9	544.57	529.10
Hours of service paid.....	19,174,277	423,765	2.3	15.4	xxxxxx	xxxxxx
Expenditures paid (\$ in millions).....	\$127.3	\$2.4	2.0	23.0	xxxxxx	xxxxxx
Adult Protective Services (APS)						
Cases opened during the month.....	6,251	255	4.3	j/	xxxxxx	xxxxxx
Cases carried forward to next month.....	14,704	296	2.1	j/	xxxxxx	xxxxxx
Investigations of self neglect i/.....	1,756	6	0.3	j/	xxxxxx	xxxxxx
Investigations of abuse perpetrated by others i/....	1,178	215	22.3	j/	xxxxxx	xxxxxx

f/ Combined count of Federal only and a portion of Federal-CFAP mixed households based on the percentage of Federal persons in Federal-CFAP mixed households.

g/ Combined count of State only and a portion of Federal-CFAP mixed households based on the percentage of State persons in Federal-CFAP mixed households.

h/ Based on paid cases for the month.

i/ Confirmed and unduplicated investigations.

j/ Effective with the September 1999 report month, the source form (SOC 242) was changed. Comparison to prior year data will appear on the September 2000 PAFF.

CalWORKs Non-Exempt Assistance Units Maximum Aid Payment (MAP) and Food Stamp (FS) Allotment

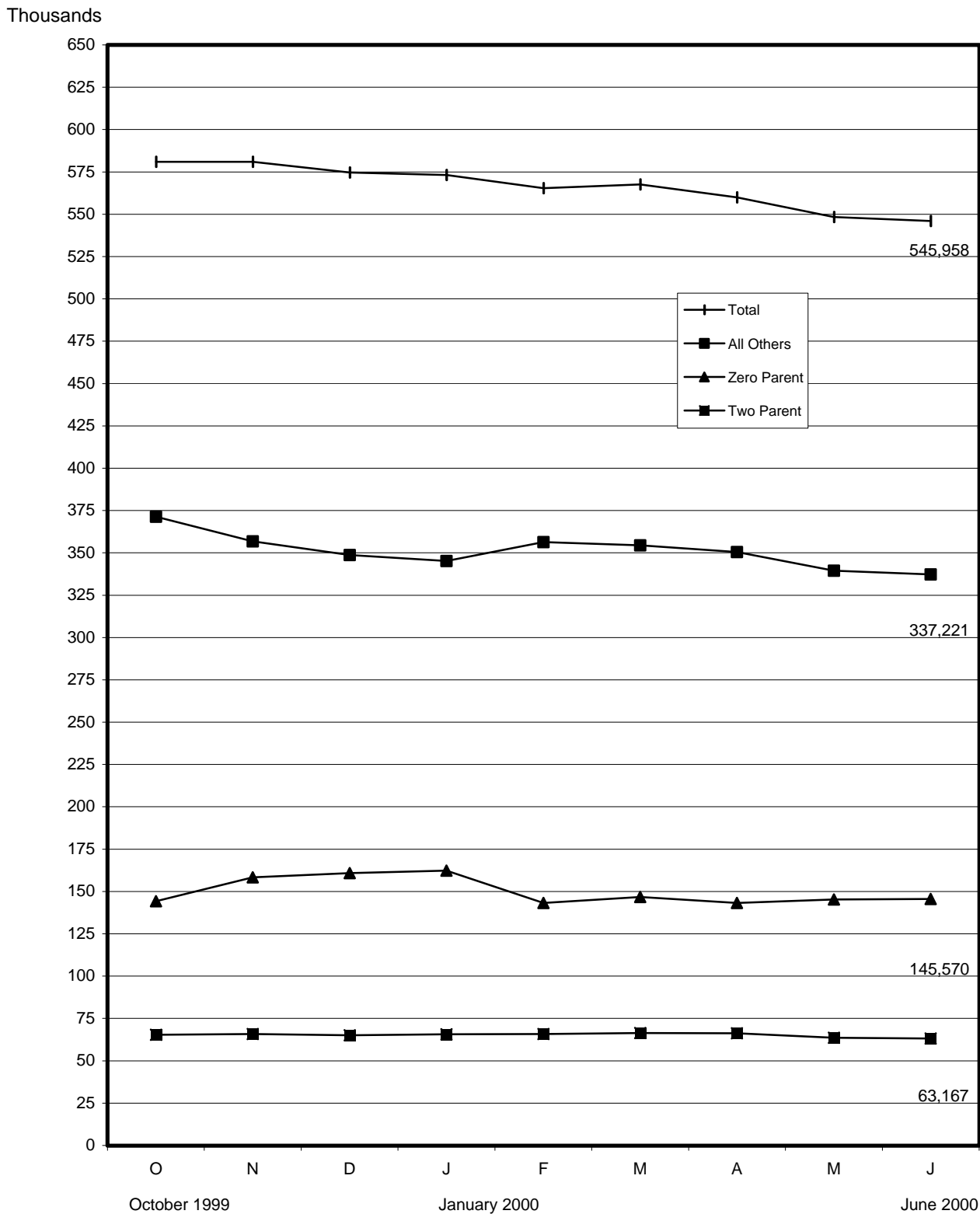
MAP Effective (7/1/99)			FS Allotments (10/1/99 - 9/30/00)	
<i>Eligible persons in the same home</i>	<i>Region 1</i>	<i>Region 2</i>	<i>Eligible persons in the FS household</i>	<i>Maximum Coupon Allotment</i>
1	\$310	\$294	1	\$127
2	505	481	2	234
3	626	596	3	335
4	746	710	4	426
5	849	808	5	506
6	953	907	6	607
7	1,048	996	7	671
8	1,141	1,086	8	767
9	1,233	1,173	9	863
10+	1,324	1,260	10+	959

SSI/SSP Grant Levels (effective 1/1/00)

	Aged or Disabled			Blind		
	<i>Total</i>	<i>SSI</i>	<i>SSP</i>	<i>Total</i>	<i>SSI</i>	<i>SSP</i>
Individual	\$	\$	\$	\$	\$	\$
Independent.....	692.00	512.00	180.00	749.00	512.00	237.00
Household of another.....	529.00	341.34	187.66	599.00	341.34	257.66
Nonmedical Out-of-Home Care.....	847.00	512.00	335.00	847.00	512.00	335.00
Couple						
Independent, neither member blind.....	1,229.00	769.00	460.00	xxx	xxx	xxx
Independent, one member blind.....	xxx	xxx	xxx	1,351.00	769.00	582.00
Independent, both members blind.....	xxx	xxx	xxx	1,424.00	769.00	655.00
Nonmedical Out-of-Home Care.....	1,694.00	769.00	925.00	1,694.00	769.00	925.00

CalWORKs Caseload by Category

October 1999 - June 2000

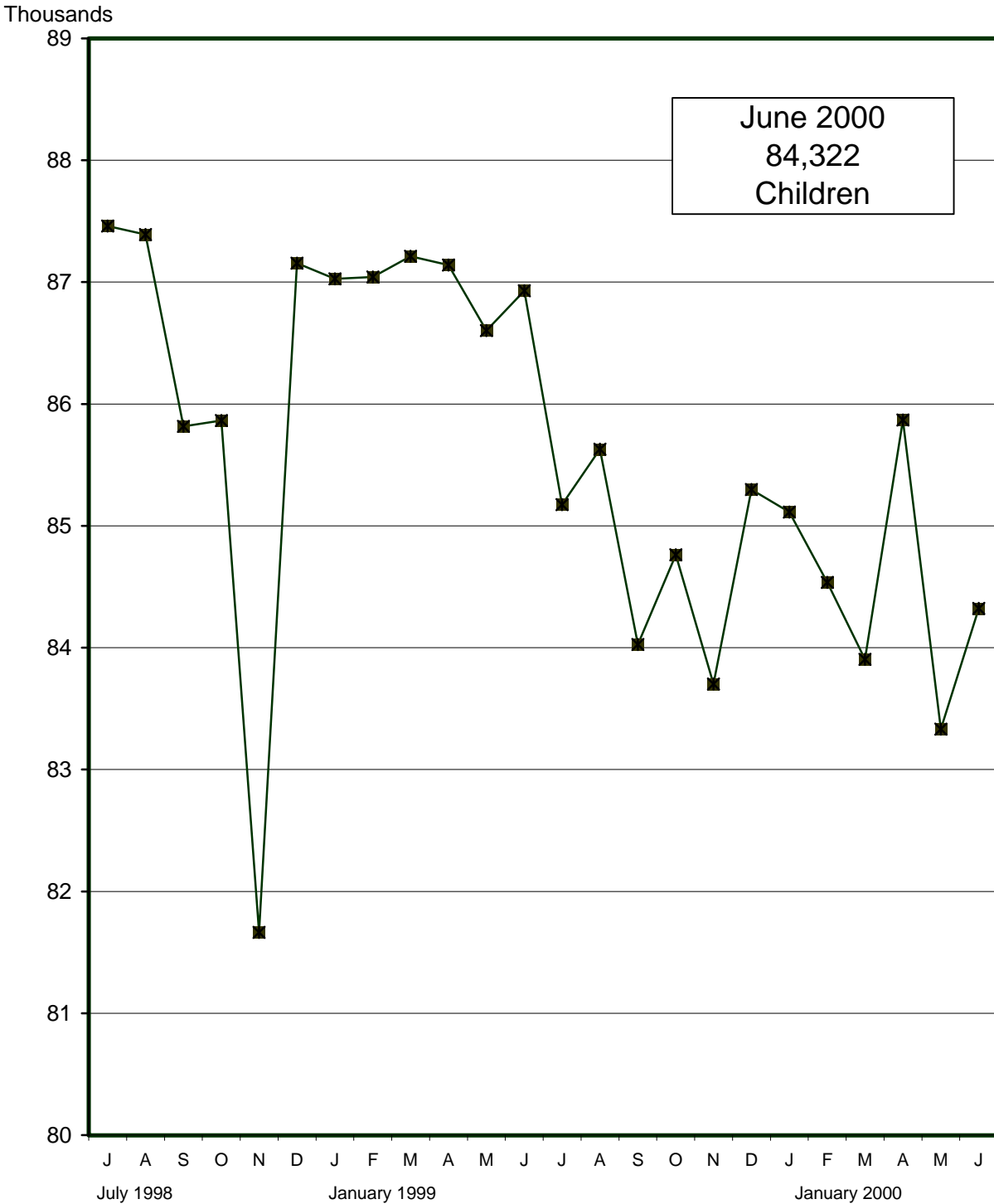


Note: reporting of caseload statistics by the two parent, zero parent, and all others categories began October 1999.

Foster Care Program

Children Placed in Foster Care^{1/}

July 1998 - June 2000



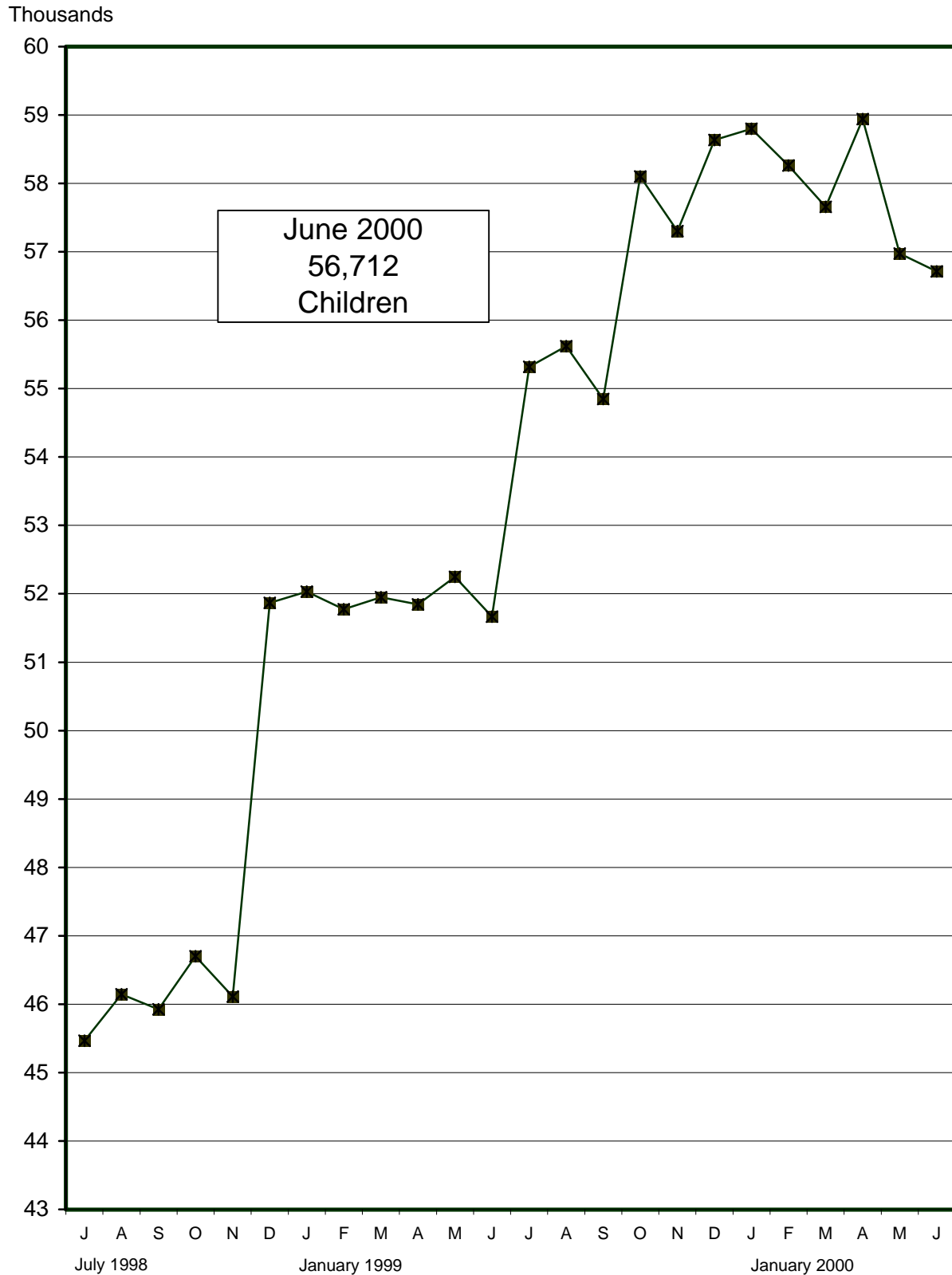
1/ Number of children for whom foster care payments have been made does not include services only children.

Notes: October 1998 - November 1998: large decrease due to 3,300 reduction in Group Home placements in LA County.
 November 1998 - December 1998: large increase due to 3,300 increase in Foster Family Home placements in LA County.

Foster Care Program

Children Placed in Foster Family Homes^{1/}

July 1998 - June 2000



1/ Number of children for whom foster care payments have been made does not include services only children.

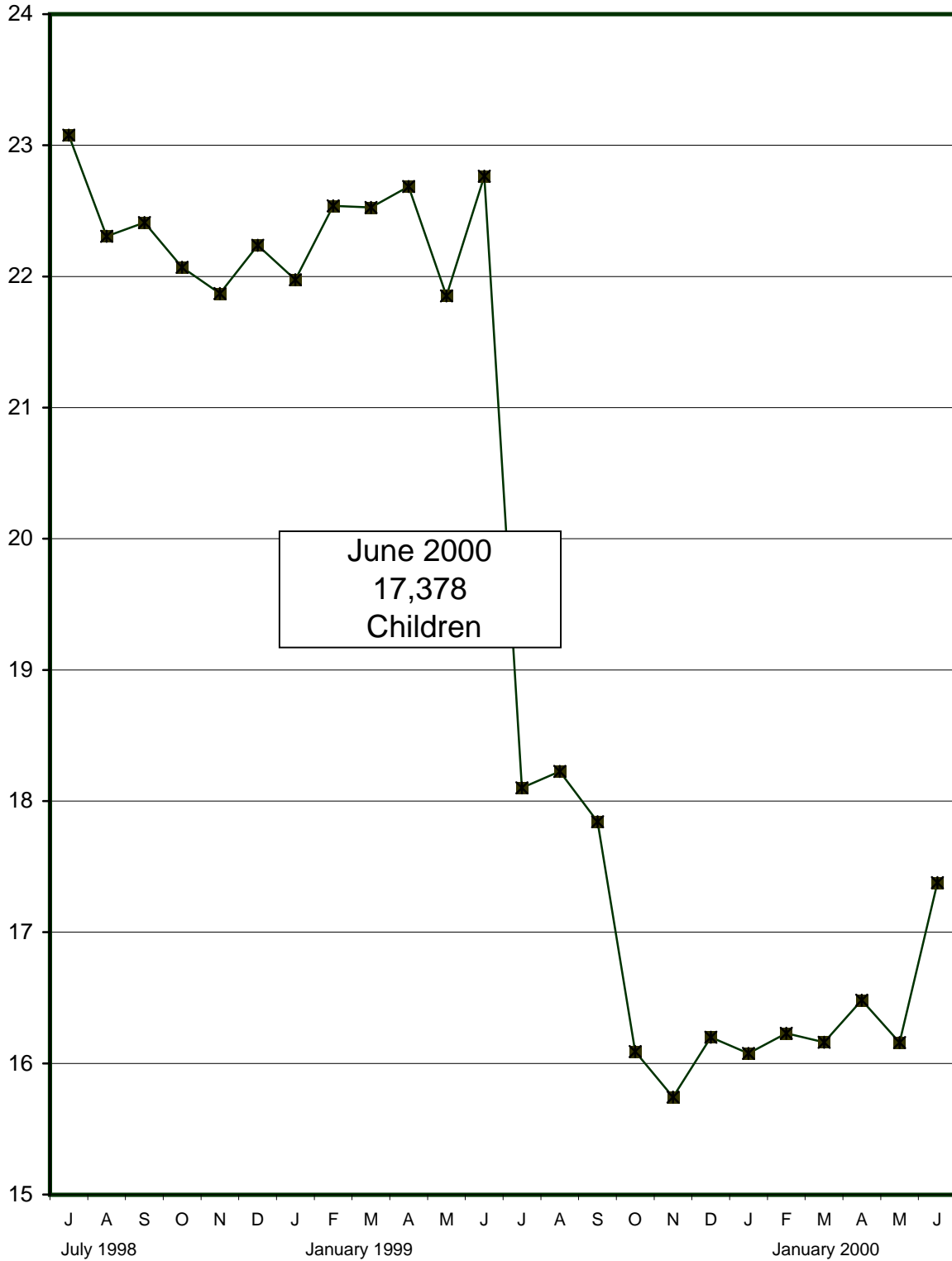
Note: November 1998 - December 1998: large increase due to 3,300 increase in Foster Family Home placements in LA County.

Foster Care Program

Children Placed in Foster Family Agencies^{1/}

July 1998 - June 2000

Thousands



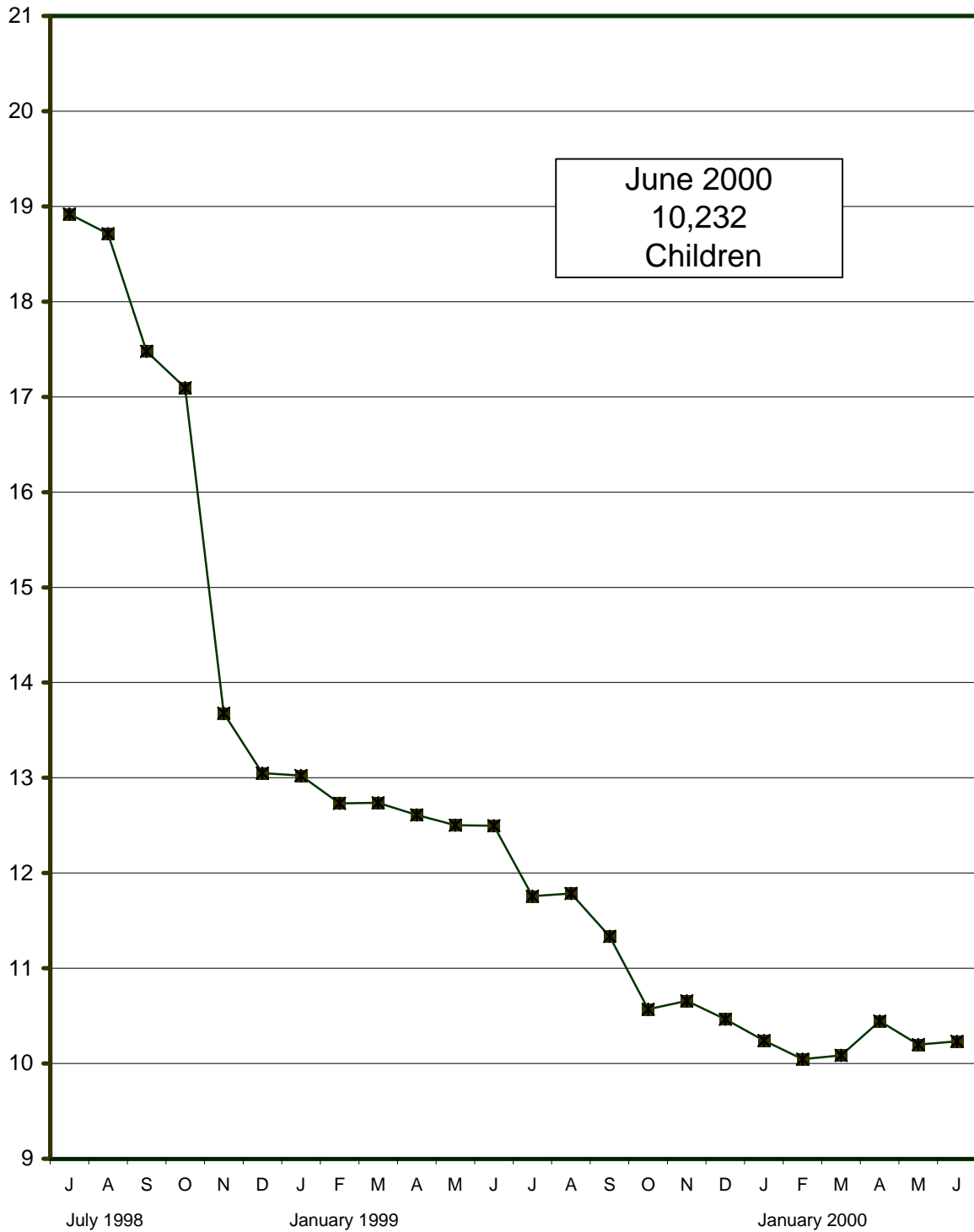
June 2000
 17,378
 Children

^{1/} Number of children for whom foster care payments have been made does not include services only children.

Note: June 1999 - July 1999: source document (CA 237 FC) revised July 1999 to obtain more accurate reporting of placement categories.

Foster Care Program Children Placed in Group Homes^{1/} July 1998 - June 2000

Thousands



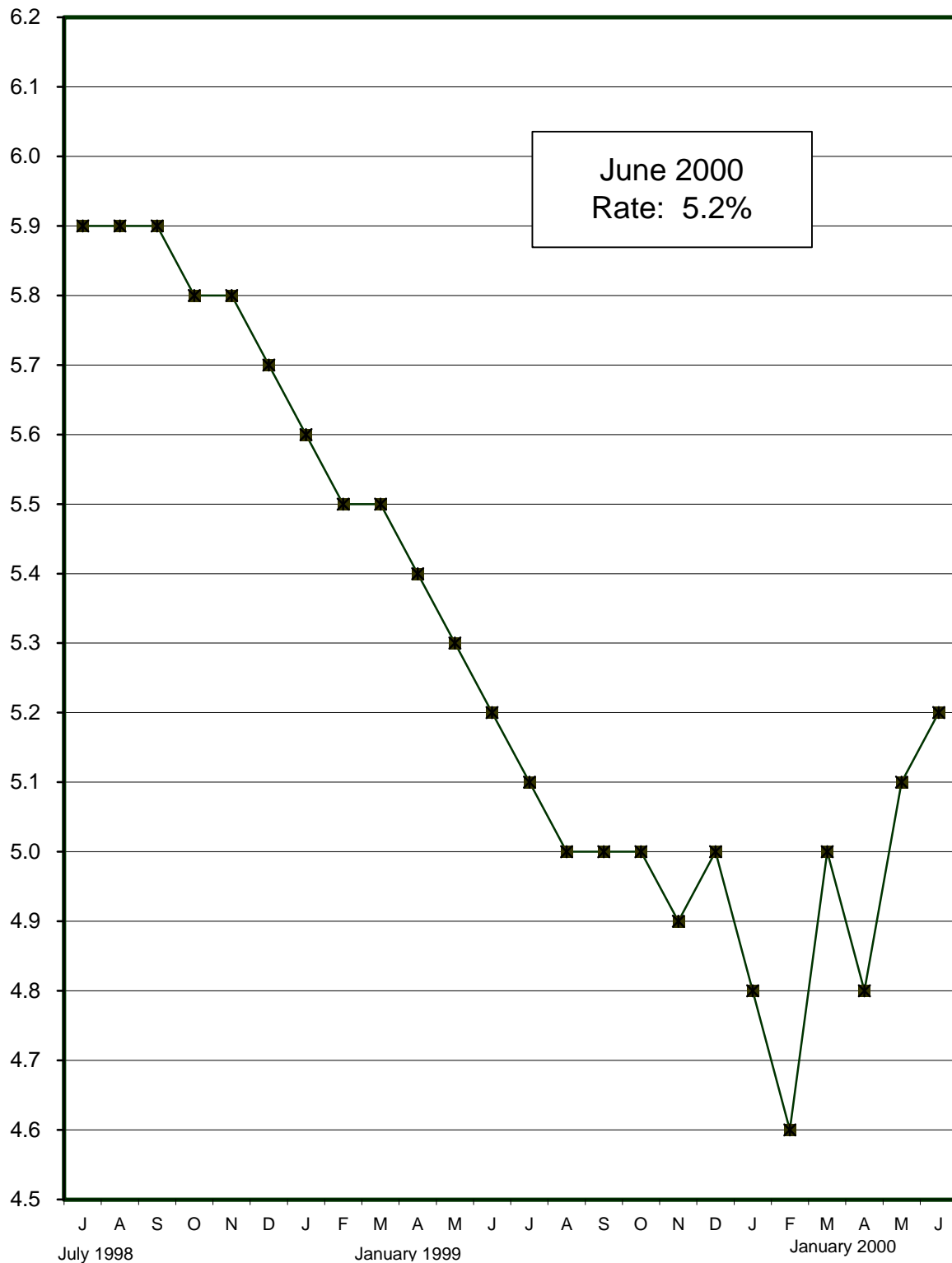
June 2000
 10,232
 Children

^{1/} Number of children for whom foster care payments have been made. Does not include services only children.

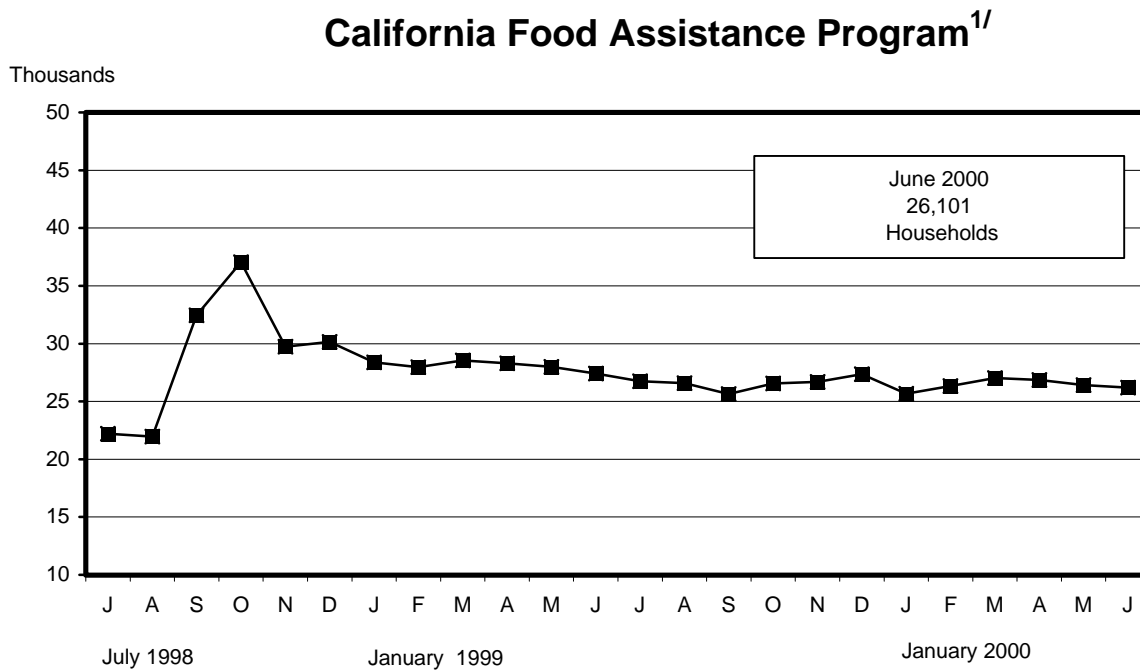
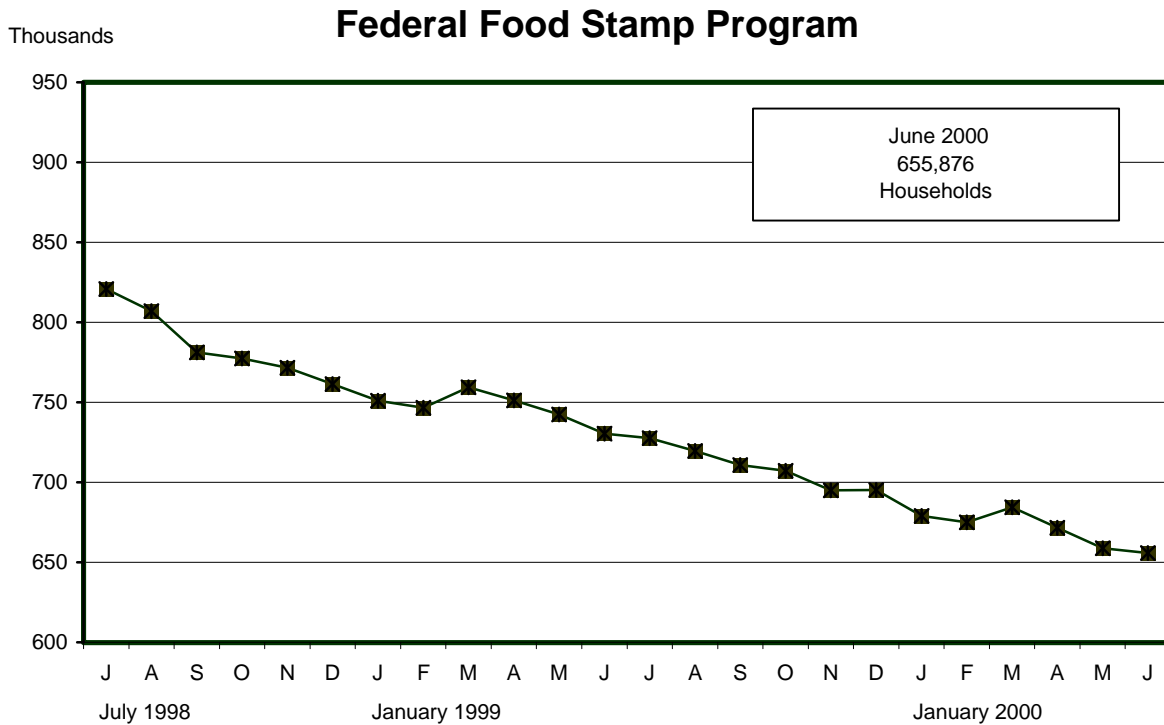
Note: October 1998 - November 1998: large decrease due to 3,300 reduction in Group Home placements in LA County.

California Unemployment Rate Seasonally Adjusted July 1998 - June 2000

Percent

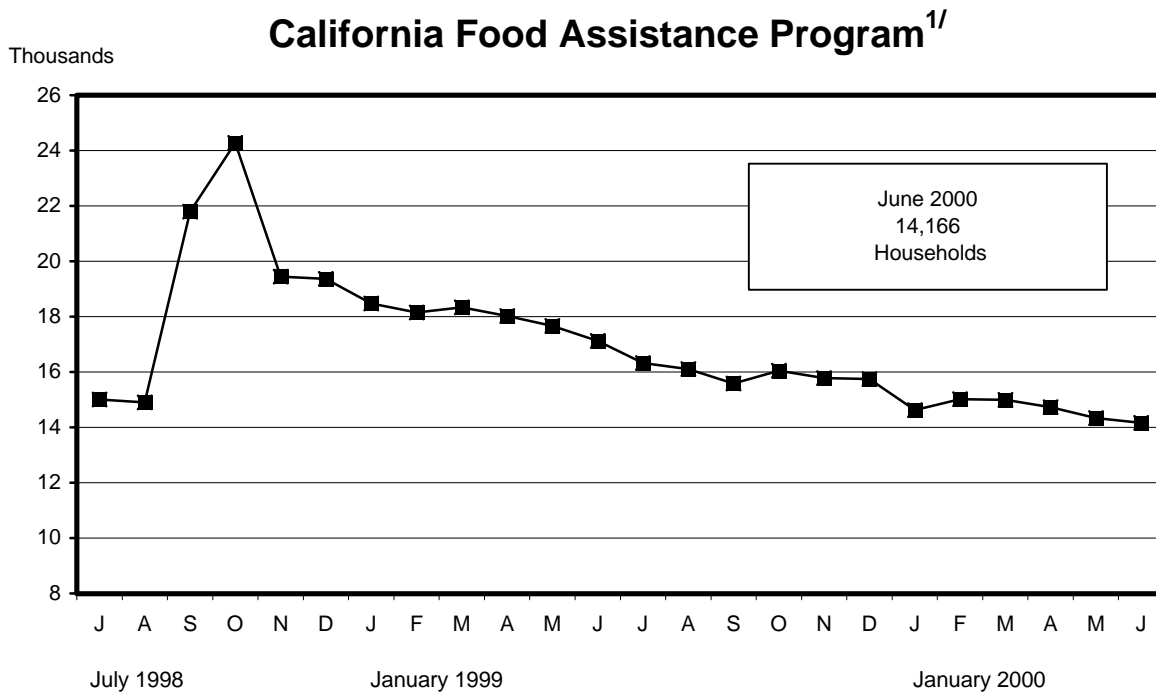
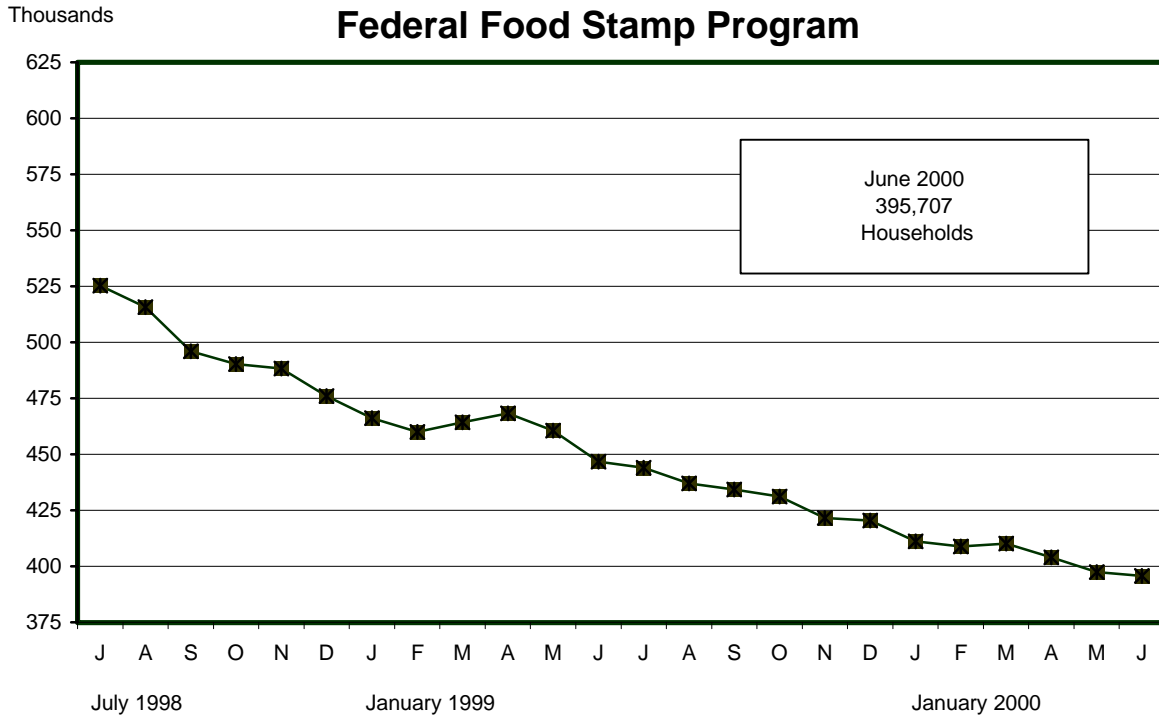


Food Stamp Program Public Assistance and Non-Assistance Households July 1998 - June 2000



^{1/} In September 1998, program rules were changed to allow certain legal immigrants to participate.

Food Stamp Program Households Also Receiving Public Assistance July 1998 - June 2000

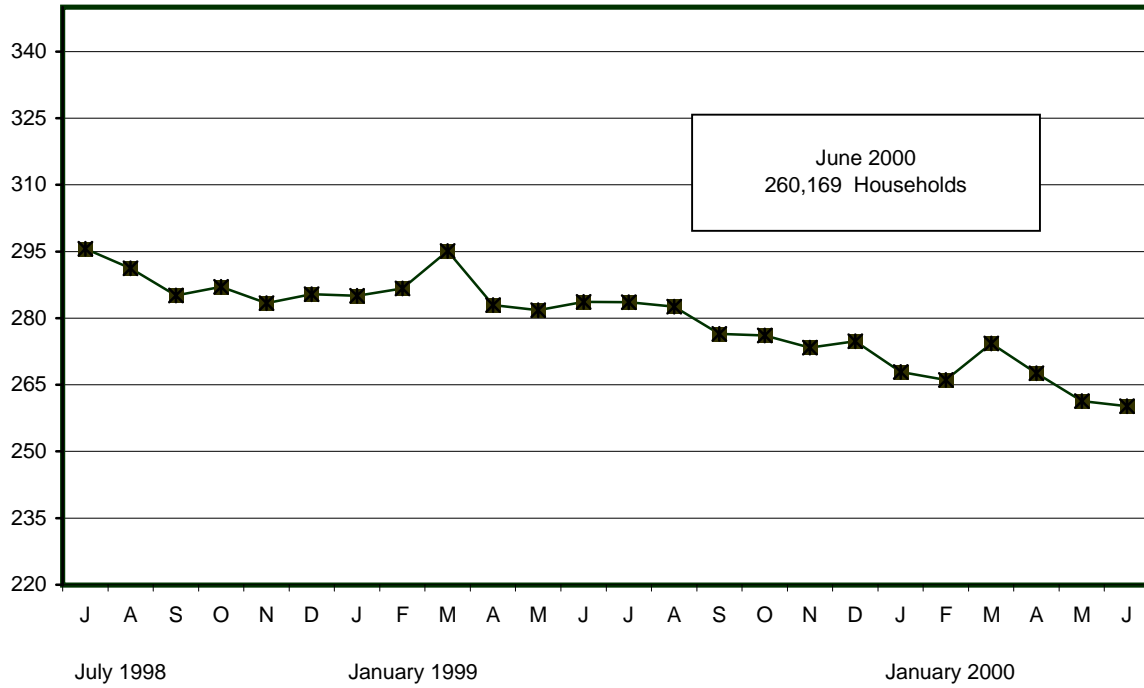


^{1/} In September 1998, program rules were changed to allow certain legal immigrants to participate.

Food Stamp Program Non-Assistance Households July 1998 - June 2000

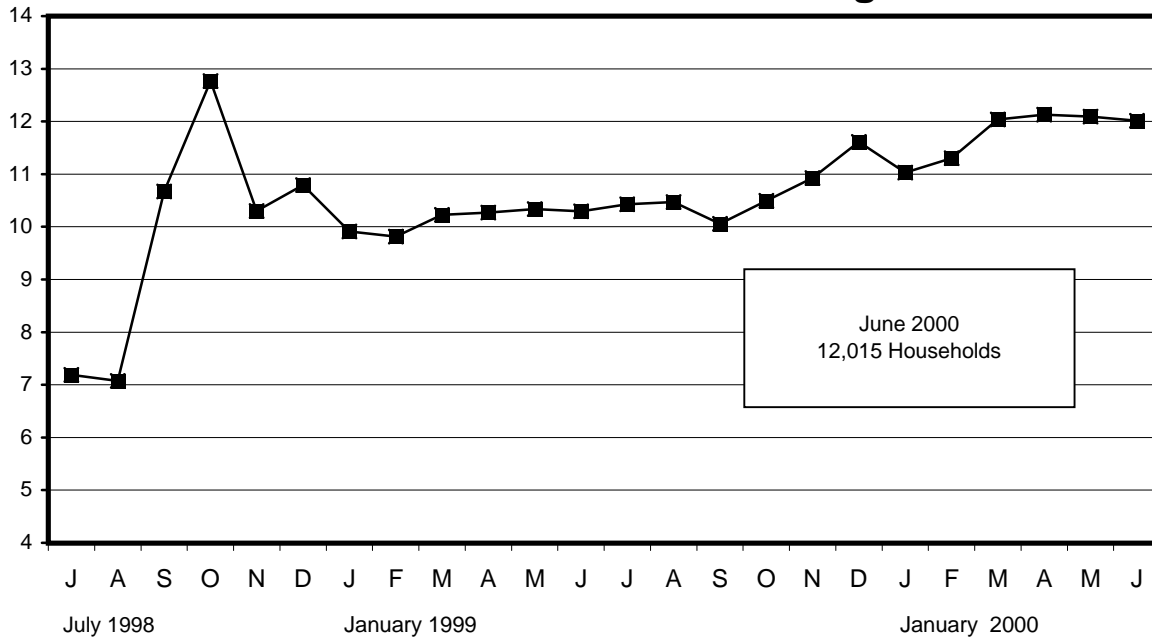
Thousands

Federal Food Stamp Program



Thousands

California Food Assistance Program^{1/}



^{1/} In September 1998, program rules were changed to allow certain legal immigrants to participate.