

Public Assistance Facts and Figures

March 15, 2001

November 2000

Cash Grant Programs	Recipients				Average Monthly Benefits	
	November 2000	Change from October 2000	Percent Change from		November 2000	November 1999
			October 2000	November 1999		
Total cash grant recipients a/.....	2,726,184	(12,200)	(0.4)	(5.4)	\$ xxxxxx	\$ xxxxxx
California Work Opportunity and Responsibility to Kids (CalWORKs) - persons b/.....	1,492,016	(9,774)	(0.7)	(9.2)	xxxxxx	xxxxxx
Children.....	1,106,896	(6,683)	(0.6)	(8.3)	xxxxxx	xxxxxx
Cases.....	530,344	1,099	0.2	(8.5)	475.86	462.00
CalWORKs payments (\$ in millions).....	\$252.4	(\$10.1)	(3.8)	(5.8)	xxxxxx	xxxxxx
Two Parent Families - persons.....	248,029	(5,423)	(2.1)	(15.3)	xxxxxx	xxxxxx
Children.....	149,511	(3,731)	(2.4)	(14.9)	xxxxxx	xxxxxx
Cases.....	56,338	(1,056)	(1.8)	(14.4)	517.99	534.68
Payments (\$ in millions).....	\$29.2	(\$1.4)	(4.4)	(17.1)	xxxxxx	xxxxxx
Zero Parent Families - persons.....	302,515	7,599	2.6	(0.4)	xxxxxx	xxxxxx
Children.....	302,515	7,599	2.6	(0.4)	xxxxxx	xxxxxx
Cases.....	158,218	5,941	3.9	0.7	422.04	402.29
Payments (\$ in millions).....	\$66.8	(\$1.8)	(2.6)	5.6	xxxxxx	xxxxxx
All Other Families - persons.....	941,472	(11,950)	(1.3)	(10.1)	xxxxxx	xxxxxx
Children.....	654,870	(10,551)	(1.6)	(9.9)	xxxxxx	xxxxxx
Cases.....	315,788	(3,786)	(1.2)	(11.5)	495.31	474.90
Payments (\$ in millions).....	\$156.4	(\$6.9)	(4.2)	(7.7)	xxxxxx	xxxxxx
Foster Care Program (FC) - children c/.....	73,146	(1,897)	(2.5)	(13.5)	1,440.84	1,251.59
Foster Family Home placements.....	48,862	(921)	(1.9)	(15.8)	695.07	594.10
Foster Family Agency placements.....	14,746	(647)	(4.2)	(8.3)	1,852.46	1,675.88
Group Home placements.....	9,538	(329)	(3.3)	(9.0)	4,926.17	4,486.23
Foster Care payments (\$ in millions).....	\$105.4	(\$4.94)	(4.5)	(0.4)	xxxxxx	xxxxxx
Supplemental Security Income/State Supplementary Payment (SSI/SSP) - persons d/.....	1,079,596	530	0.0	1.9	xxxxxx	xxxxxx
Aged.....	333,938	88	0.0	1.4	442.98	438.79
Blind.....	21,815	6	0.0	(0.4)	542.09	539.33
Disabled.....	723,843	436	0.1	2.1	526.12	525.72
SSI/SSP payments (\$ in millions).....	\$540.6	(\$5.1)	(0.9)	2.2	xxxxxx	xxxxxx
General Relief (GR) - persons.....	81,426	(1,059)	(1.3)	(13.5)	243.18	232.93
	November 2000	October 2000	November 1999			
California unemployment rate (seasonally adjusted).....	4.8%	4.9%	5.0%			
California population on assistance a/.....	8.7	8.8	9.5			

a/ Persons receiving CalWORKs, FC, SSI/SSP, or GR.

b/ All CalWORKs data is for cash grant cases only.

c/ Number of children for whom foster care payments have been made. Does not include services only children.

d/ Estimate based on preliminary data from the Social Security Administration.

Data represents the most current statistics available at the time of publication. Current month includes prior period and preliminary data if current month is not reported timely by the County. Prior period data is updated to include the most current information, including county reported changes/updates.

For additional information, contact Data Analysis and Publications Branch at (916) 653-4180, via the Internet at infosrvc@dss.ca.gov, or visit our web site at: <http://www.dss.cahwnet.gov/research/default.htm>

Non-Cash Grant Programs	Recipients				Average Monthly Benefits	
	November 2000	October 2000	Percent Change from		November 2000	November 1999
			October 2000	November 1999		
					\$	\$
					Average Coupon Value	
Federal Food Stamp (FS) Program						
Persons.....	1,664,556	(31,476)	(1.9)	(11.5)	75.09	72.40
Assistance: persons.....	1,070,893	(21,772)	(2.0)	(14.5)	xxxxxx	xxxxxx
households e/.....	363,609	(4,053)	(1.1)	(13.7)	xxxxxx	xxxxxx
Nonassistance: persons.....	593,663	(9,704)	(1.6)	(5.5)	xxxxxx	xxxxxx
households e/.....	256,885	(2,716)	(1.0)	(6.0)	xxxxxx	xxxxxx
Expenditures paid (\$ in millions).....	\$125.0	(\$1.1)	(0.9)	(8.2)	xxxxxx	xxxxxx
California Food Assistance Program (CFAP)						
Persons.....	104,981	(1,964)	(1.8)	16.1	42.90	46.41
Assistance: persons.....	60,021	(1,611)	(2.6)	(4.5)	xxxxxx	xxxxxx
households f/.....	16,266	(399)	(2.4)	1.9	xxxxxx	xxxxxx
Nonassistance: persons.....	44,960	(353)	(0.8)	63.3	xxxxxx	xxxxxx
households f/.....	15,612	51	0.3	40.3	xxxxxx	xxxxxx
Expenditures paid (\$ in millions).....	\$4.5	\$0.0	0.3	7.3	xxxxxx	xxxxxx
In-Home Supportive Services (IHSS)					Average Cost Per Person g/	
Cases open at end of month.....	245,451	1,270	0.5	6.9	552.42	536.46
Hours of service paid.....	19,067,506	(347,162)	(1.8)	8.2	xxxxxx	xxxxxx
Expenditures paid (\$ in millions).....	\$129.9	(\$1.8)	(1.3)	12.4	xxxxxx	xxxxxx
Adult Protective Services (APS)						
Cases opened during the month.....	5,578	(569)	(9.3)	6.3	xxxxxx	xxxxxx
Cases carried forward to next month.....	16,168	315	2.0	47.2	xxxxxx	xxxxxx
Reports of self neglect h/.....	1,519	(186)	(10.9)	16.8	xxxxxx	xxxxxx
Reports of abuse perpetrated by others h/.....	935	(146)	(13.5)	17.1	xxxxxx	xxxxxx

e/ Combined count of Federal only and a portion of Federal-CFAP mixed households based on the percentage of Federal persons in Federal-CFAP mixed households.

f/ Combined count of State only and a portion of Federal-CFAP mixed households based on the percentage of State persons in Federal-CFAP mixed households.

g/ Based on paid cases for the month.

h/ Confirmed and unduplicated Reports.

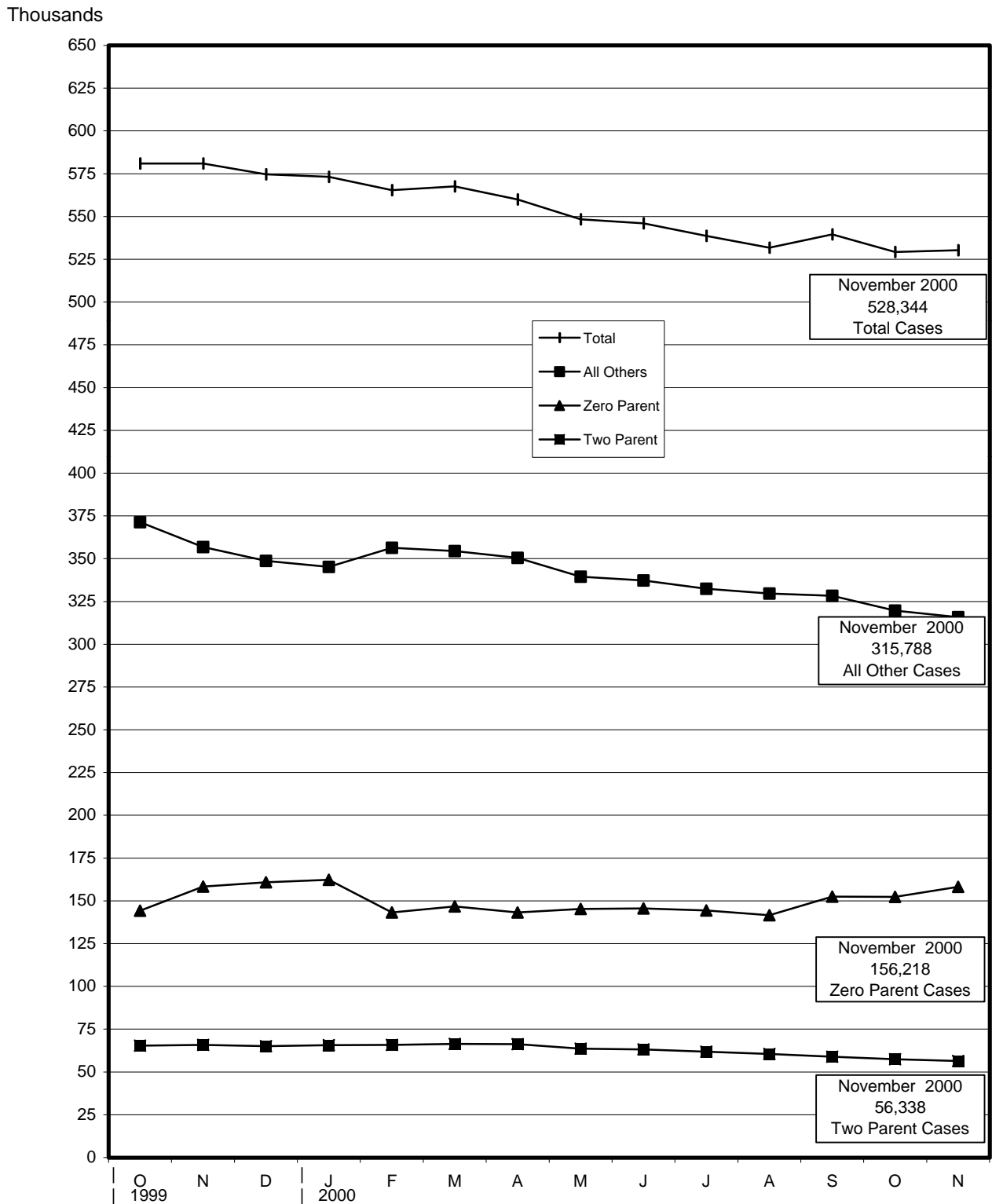
CalWORKs Non-Exempt Assistance Units Maximum Aid Payment (MAP) and Food Stamp (FS) Allotment

MAP Effective (10/1/00)			FS Allotments (10/1/00 - 9/30/01)	
Eligible persons in the same home	Region 1	Region 2	Eligible persons in the FS household	Maximum Coupon Allotment
1	\$319	\$303	1	\$130
2	520	495	2	238
3	645	614	3	341
4	768	731	4	434
5	874	832	5	515
6	981	934	6	618
7	1,079	1,025	7	683
8	1,175	1,118	8	781
9	1,269	1,208	9	879
10+	1,363	1,297	each additional person	98

SSI/SSP Grant Levels (effective 1/1/00)

	Aged or Disabled			Blind		
	Total	SSI	SSP	Total	SSI	SSP
Individual	\$	\$	\$	\$	\$	\$
Independent.....	692.00	512.00	180.00	749.00	512.00	237.00
Household of another.....	529.00	341.34	187.66	599.00	341.34	257.66
Nonmedical Out-of-Home Care.....	847.00	512.00	335.00	847.00	512.00	335.00
Couple						
Independent, neither member blind.....	1,229.00	769.00	460.00	xxx	xxx	xxx
Independent, one member blind.....	xxx	xxx	xxx	1,351.00	769.00	582.00
Independent, both members blind.....	xxx	xxx	xxx	1,424.00	769.00	655.00
Nonmedical Out-of-Home Care.....	1,694.00	769.00	925.00	1,694.00	769.00	925.00

CalWORKs Caseload by Category October 1999 - November 2000



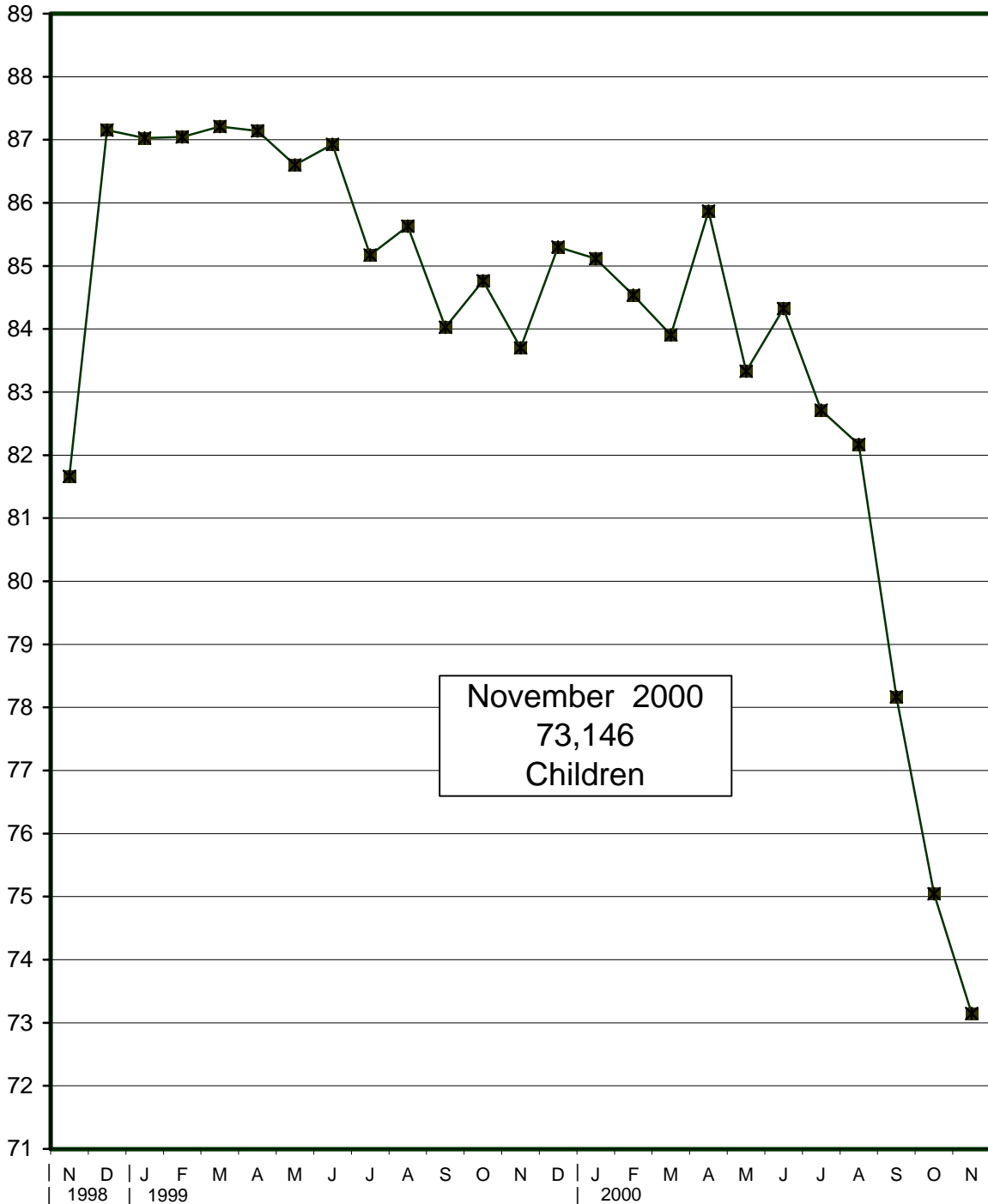
Note: reporting of caseload statistics by the two parent, zero parent, and all others categories began October 1999.

Foster Care Program

Children Placed in Foster Care^{1/}

November 1998 - November 2000

Thousands



^{1/} Number of children for whom foster care payments have been made does not include services only children.

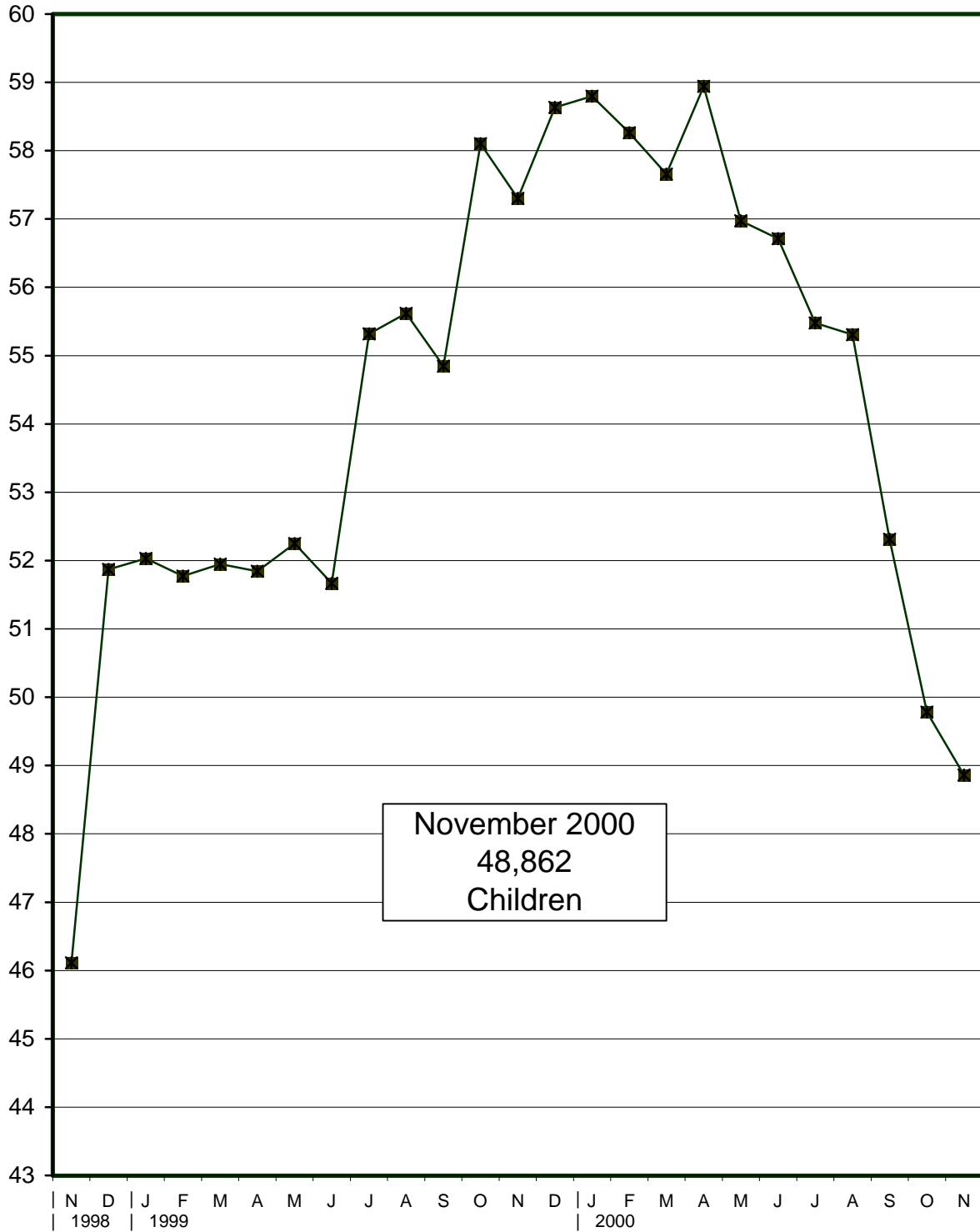
Note: November 1998 - December 1998: large increase due to 3,300 increase in Foster Family Home placements in LA County.

Foster Care Program

Children Placed in Foster Family Homes^{1/}

November 1998 - November 2000

Thousands



^{1/} Number of children for whom foster care payments have been made does not include services only children.

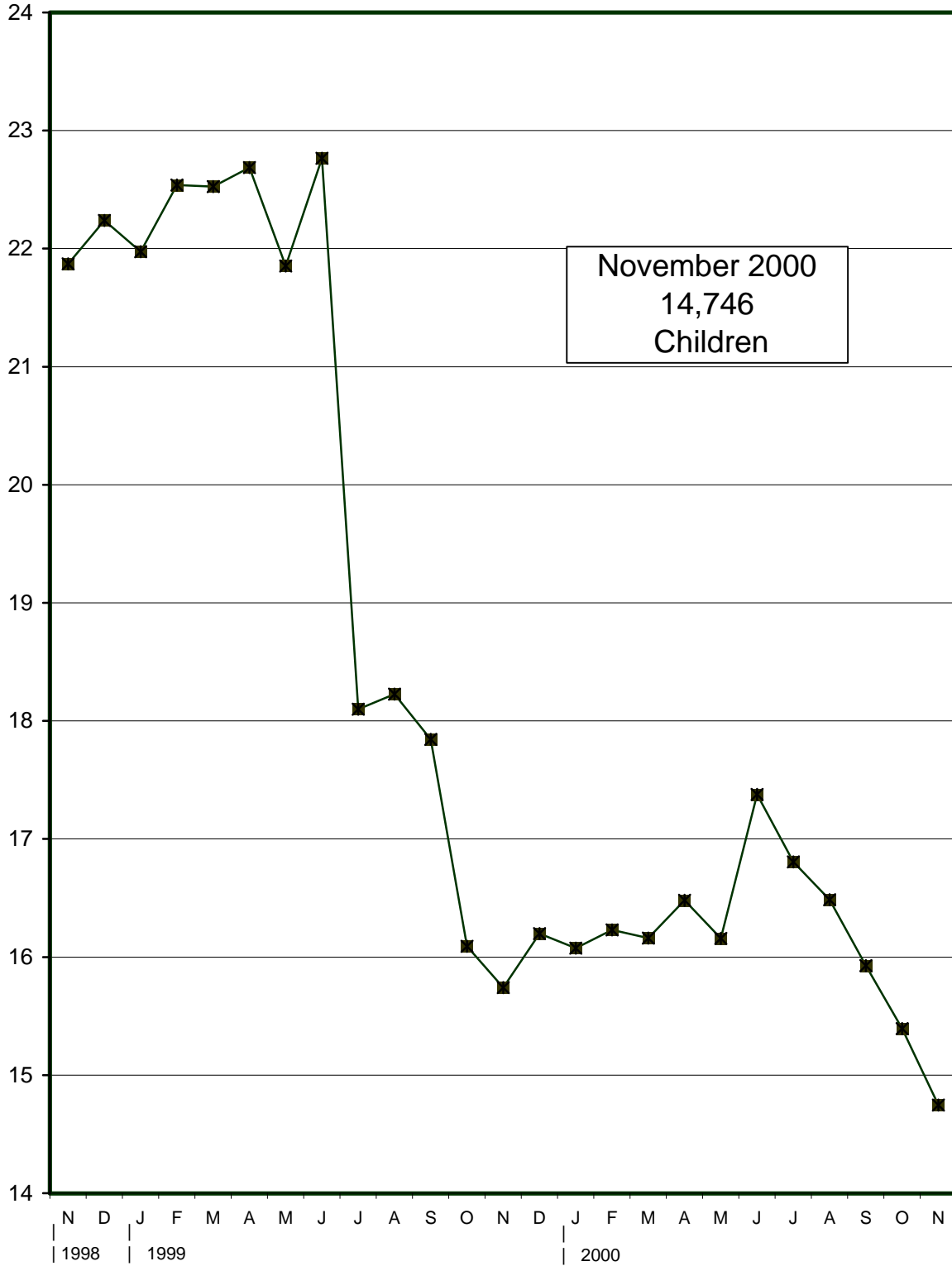
Note: November 1998 - December 1998: large increase due to 3,300 increase in Foster Family Home placements in LA County.

Foster Care Program

Children Placed in Foster Family Agencies^{1/}

November 1998 - November 2000

Thousands

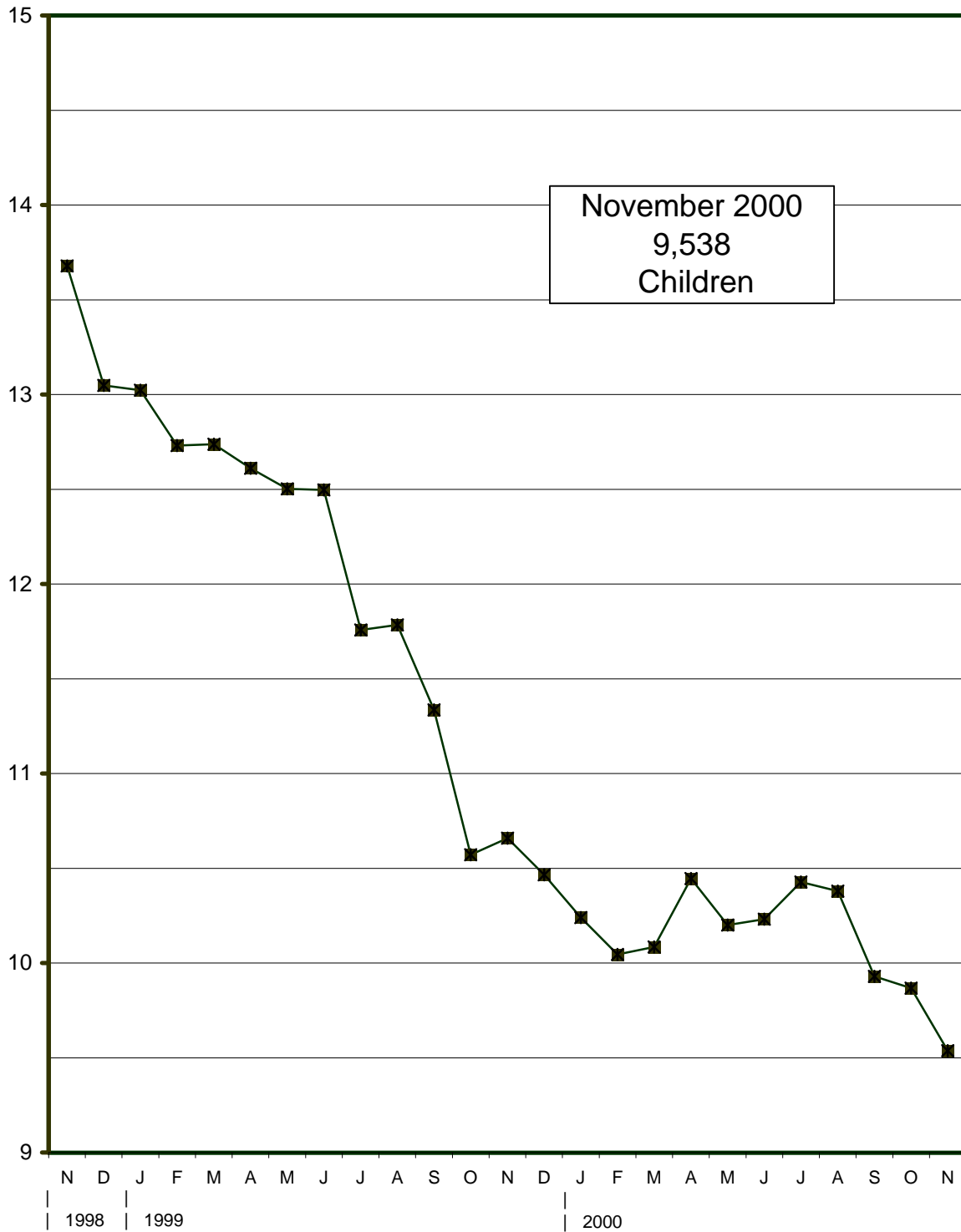


^{1/} Number of children for whom foster care payments have been made does not include services only children.

Note: June 1999 - July 1999: source document (CA 237 FC) revised July 1999 to obtain more accurate reporting of placement categories.

Foster Care Program Children Placed in Group Homes^{1/} November 1998 - November 2000

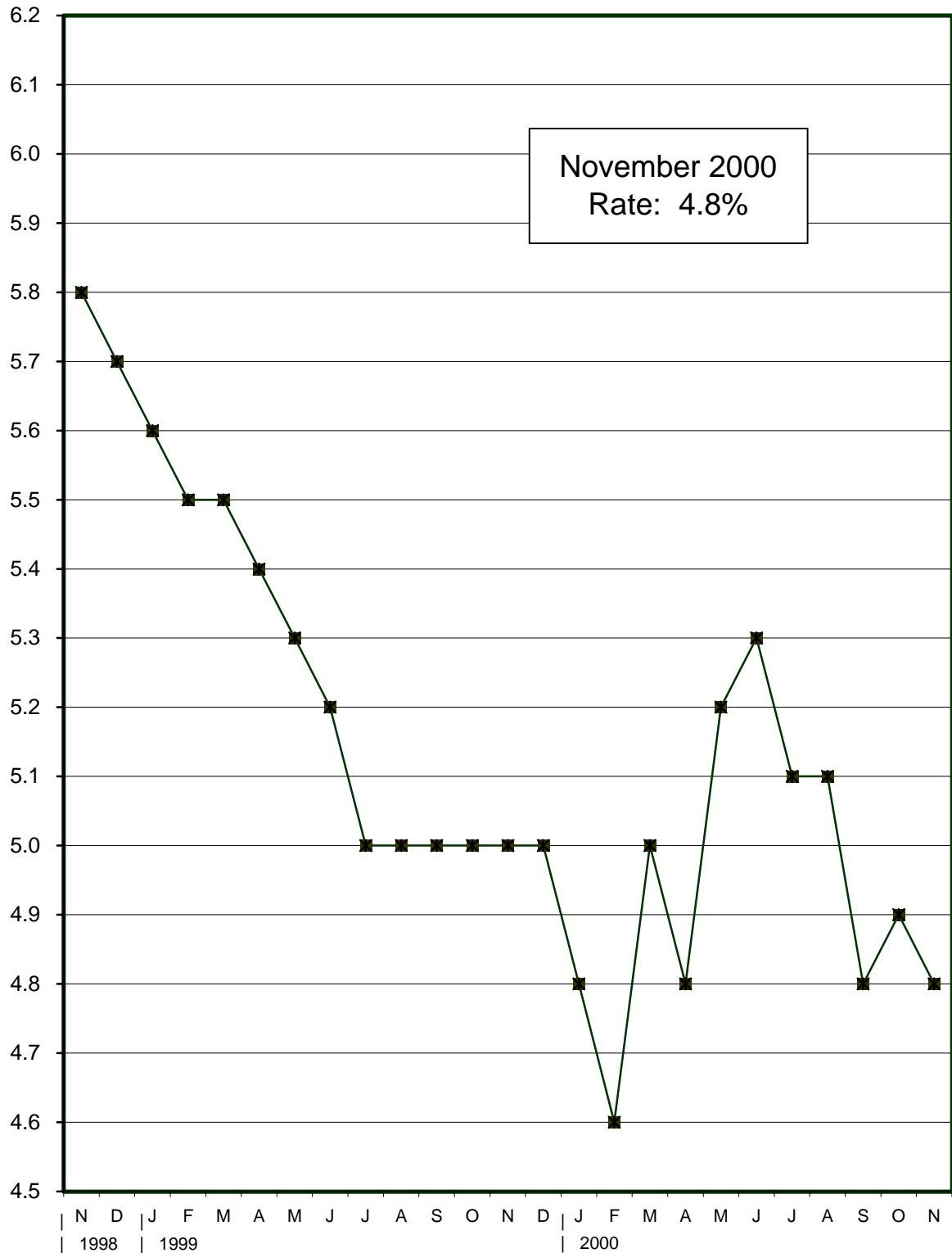
Thousands



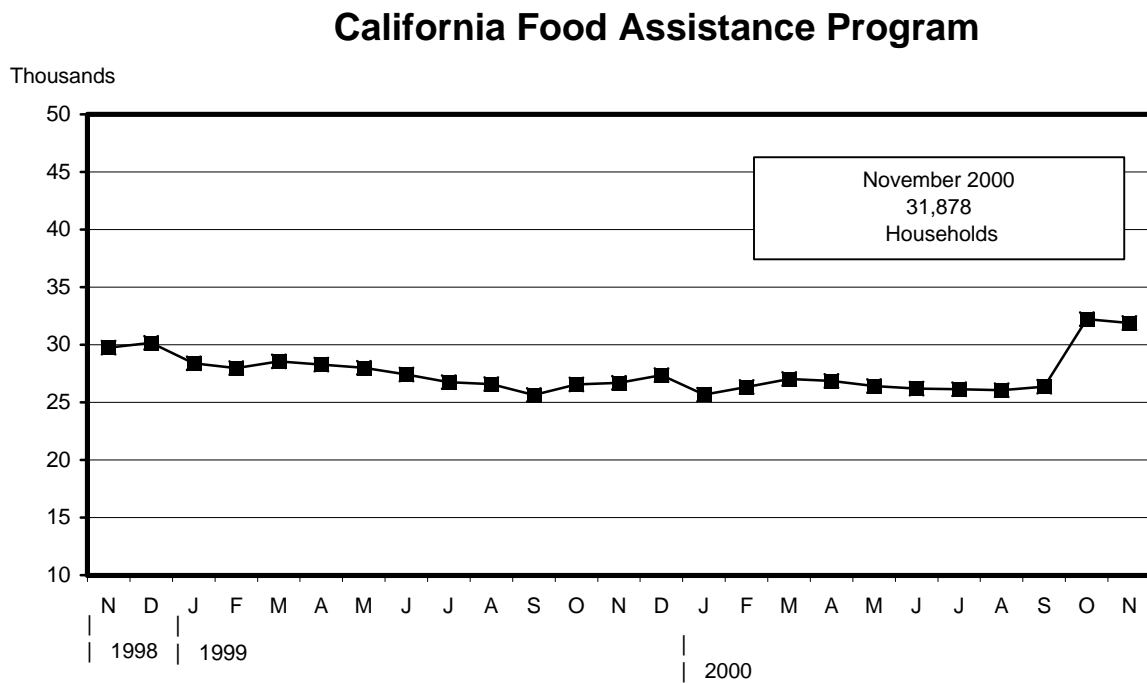
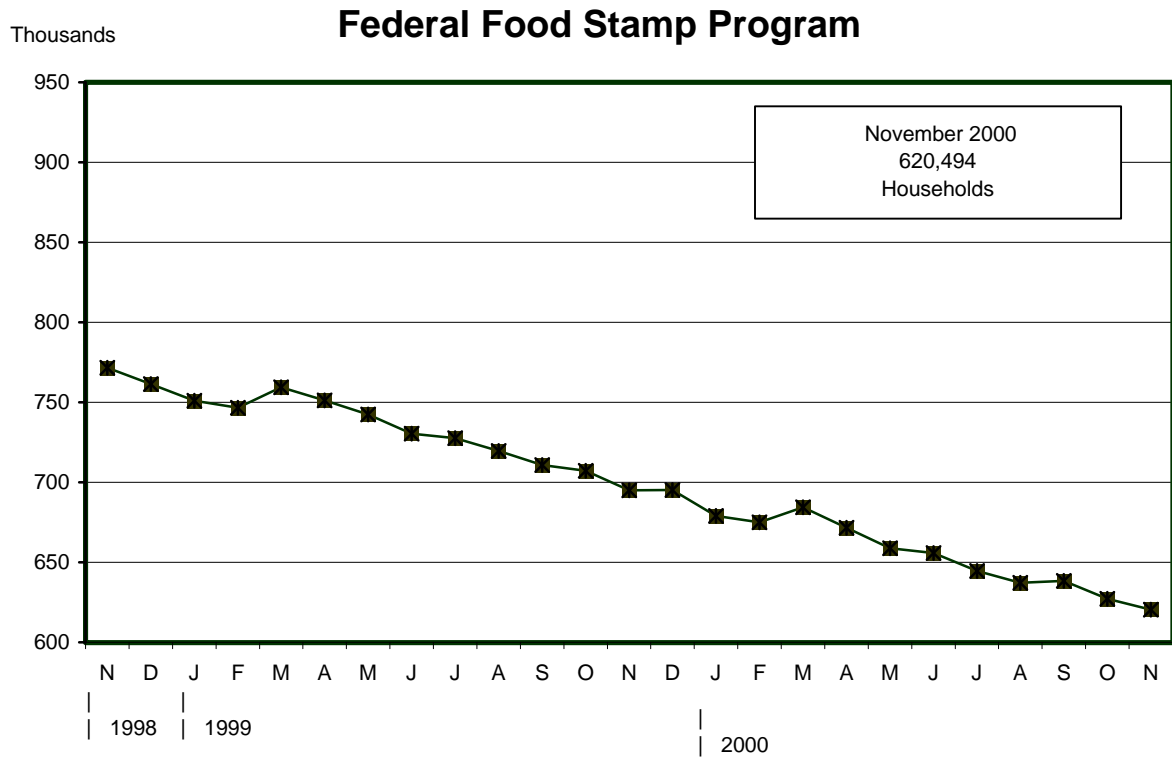
^{1/} Number of children for whom foster care payments have been made. Does not include services only children.

California Unemployment Rate Seasonally Adjusted November 1998 - November 2000

Percent



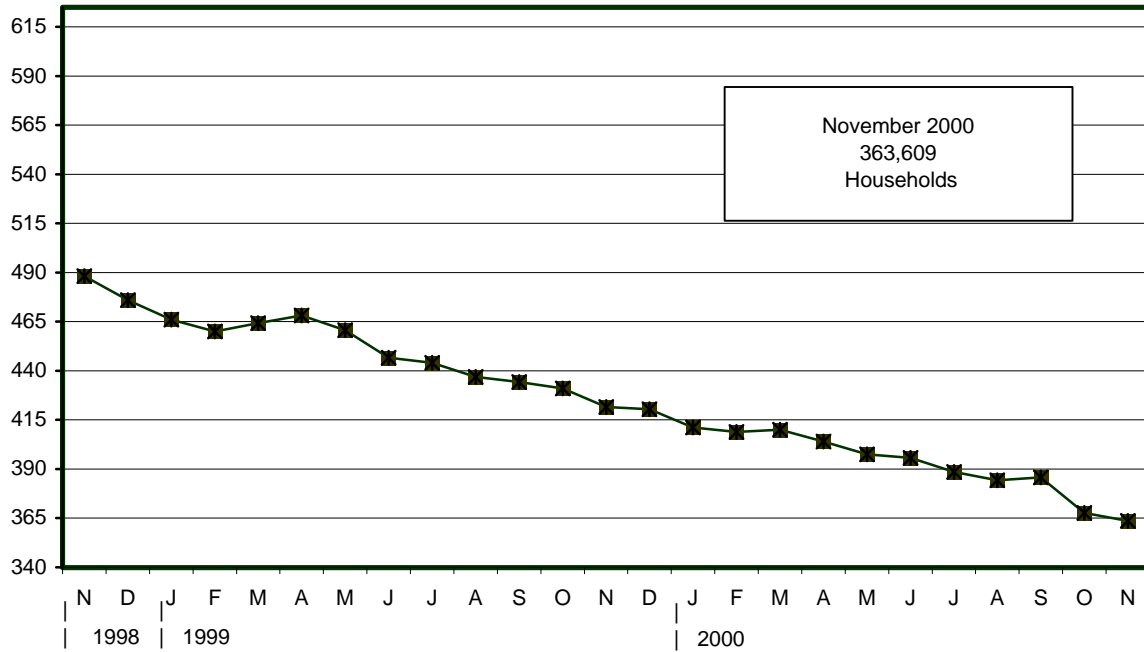
Food Stamp Program Public Assistance and Nonassistance Households November 1998 - November 2000



Food Stamp Program Households Also Receiving Public Assistance November 1998 - November 2000

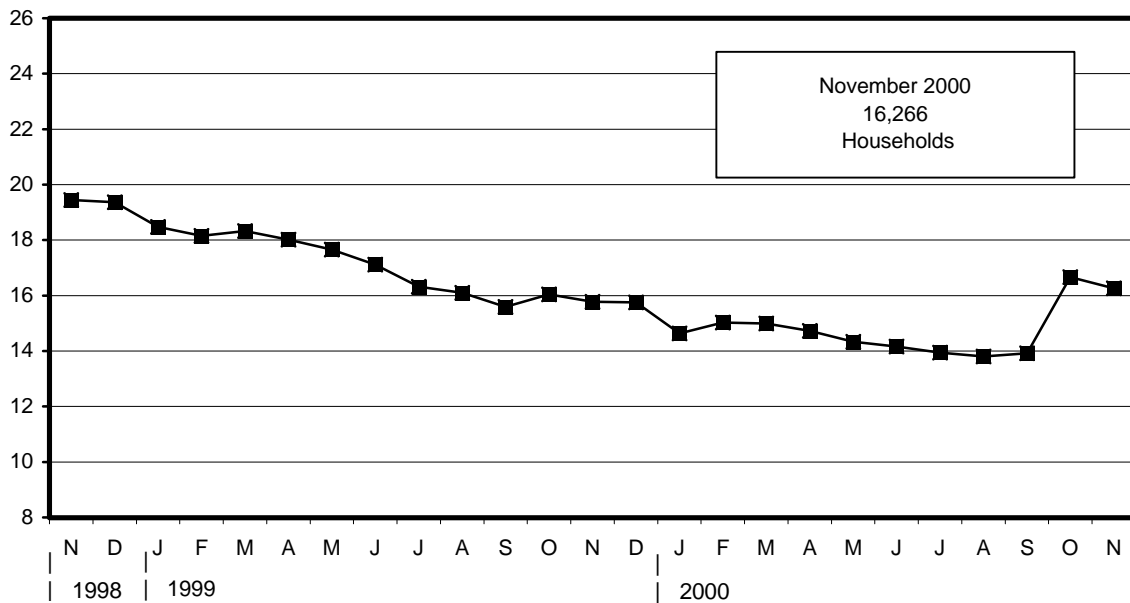
Federal Food Stamp Program

Thousands

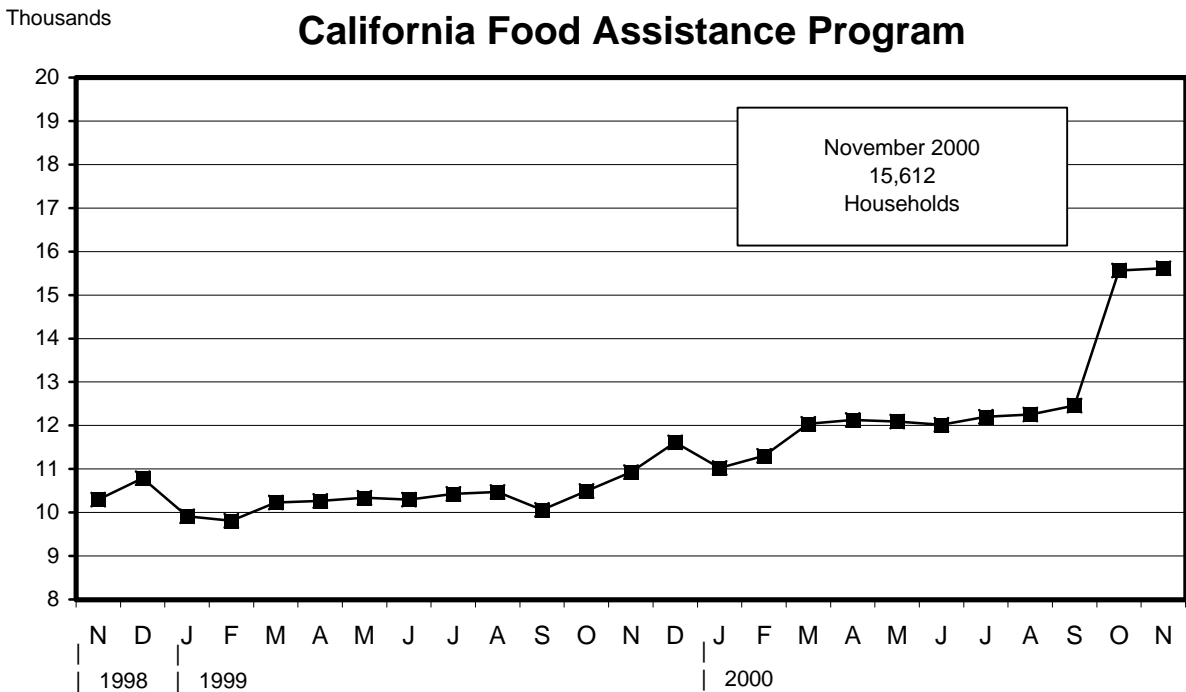
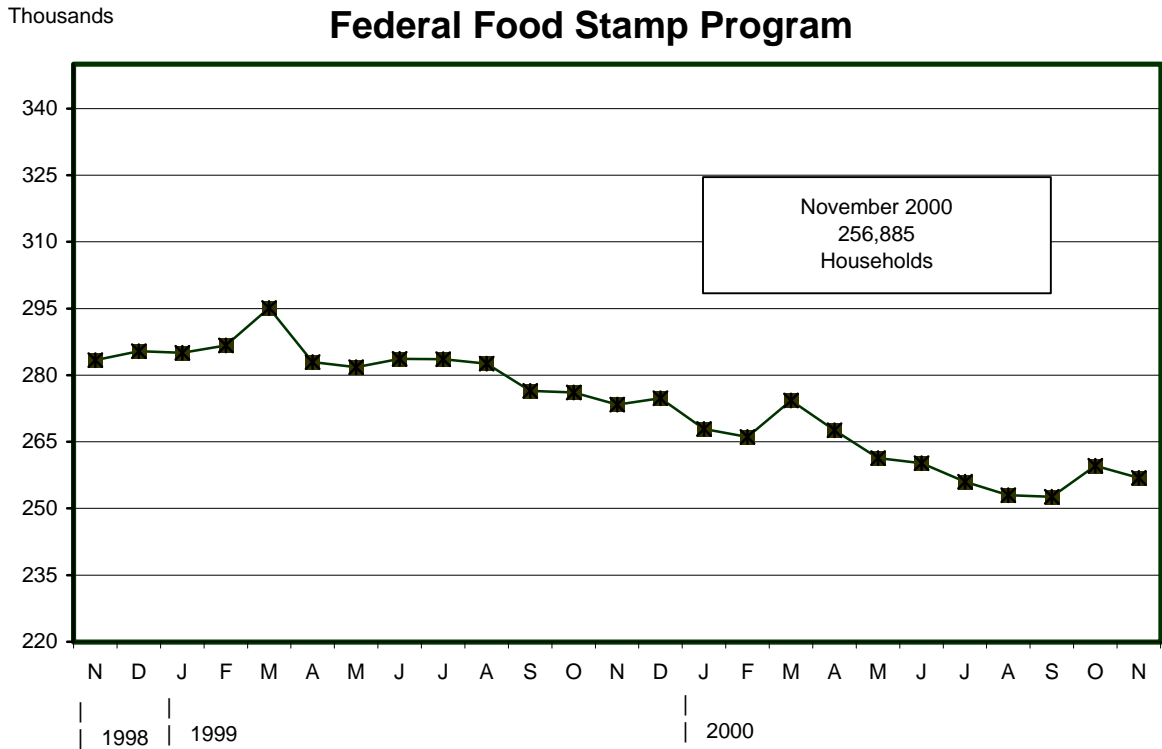


California Food Assistance Program

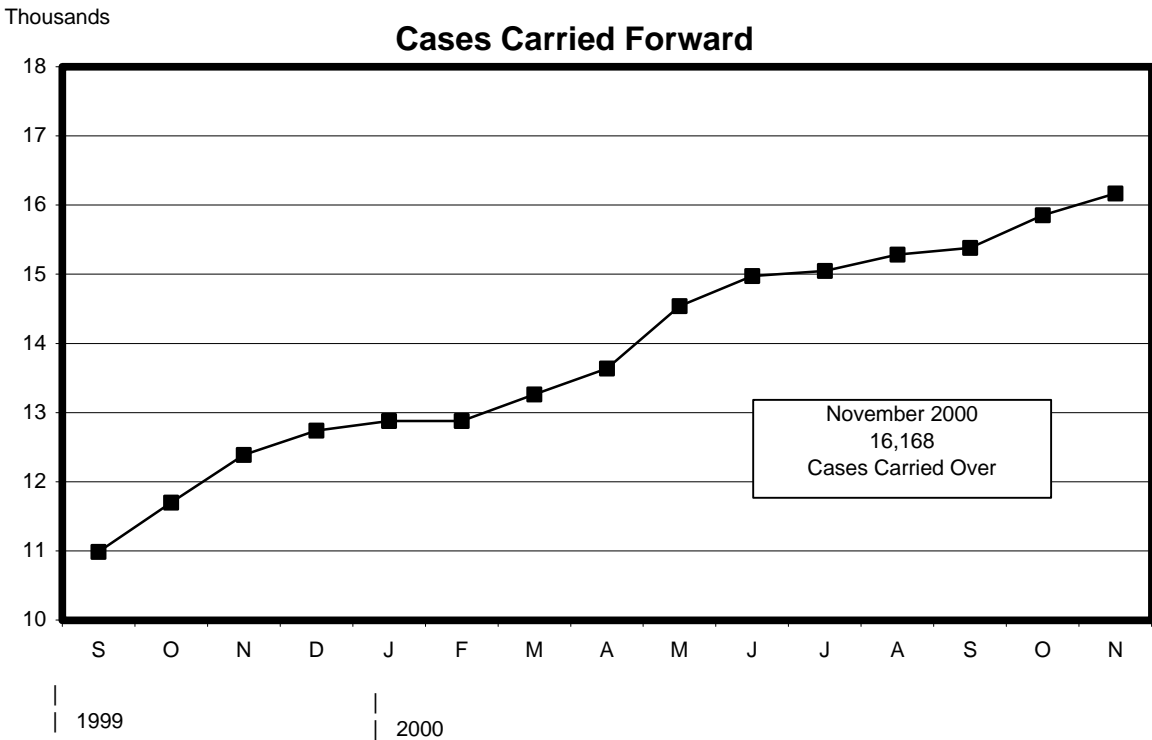
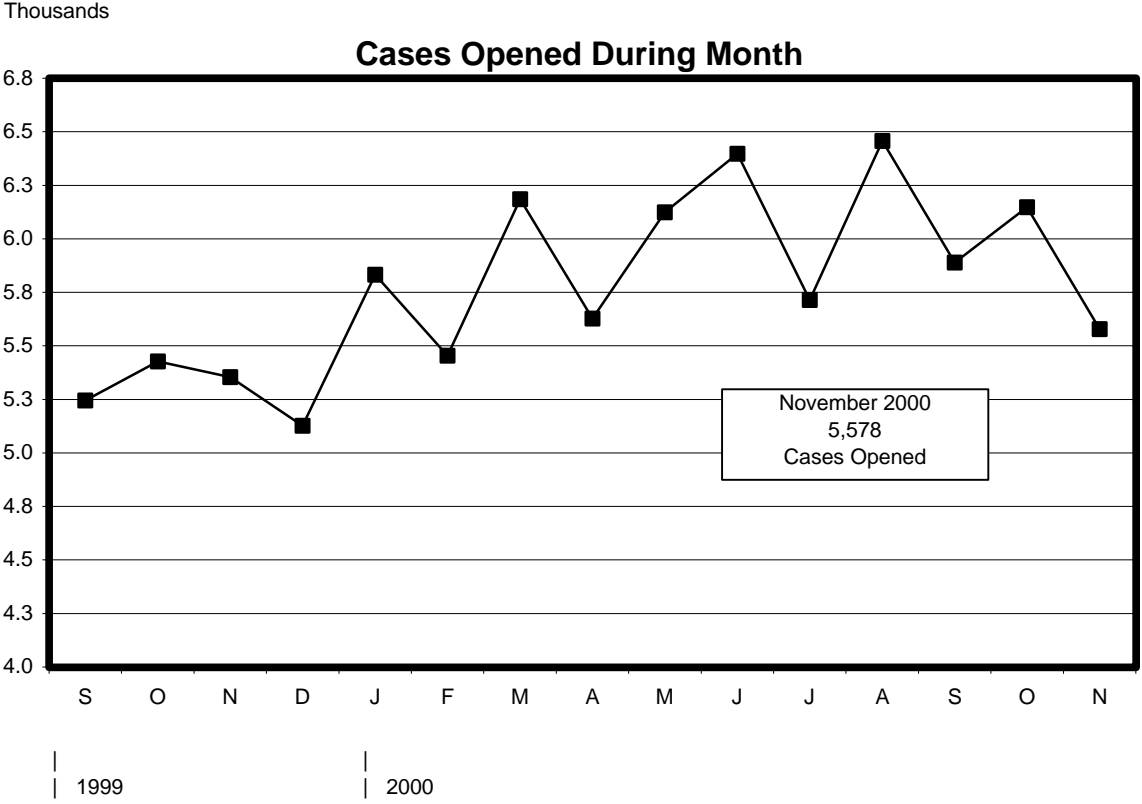
Thousands



Food Stamp Program Nonassistance Households November 1998 - November 2000



Adult Protective Services Cases Opened and Carried Forward During the Month September 1999 - November 2000



Adult Protective Services Number of Unduplicated Cases of Abuse/Neglect September 1999 - November 2000

