

# Public Assistance Facts and Figures

January 4, 2001

September 2000

Cash Grant Programs	Recipients				Average Monthly Benefits	
	September 2000	Change from August 2000	Percent Change from		September 2000	September 1999
			August 2000	September 1999		
Total cash grant recipients a/.....	2,761,440	727	11.9	6.4	\$ xxxxxx	\$ xxxxxx
California Work Opportunity and Responsibility to Kids (CalWORKs) - persons b/.....	1,525,956	5,864	0.4	(8.5)	xxxxxx	xxxxxx
Children.....	1,130,193	(1,997)	(0.2)	(7.2)	xxxxxx	xxxxxx
Cases.....	539,535	5,849	1.1	(8.9)	475.91	434.87
CalWORKs payments (\$ in millions).....	\$256.8	\$0.0	0.0	(0.3)	xxxxxx	xxxxxx
Two Parent Families - persons.....	259,195	(2,378)	(0.9)	c/	xxxxxx	xxxxxx
Children.....	156,776	(2,629)	(1.6)	c/	xxxxxx	xxxxxx
Cases.....	58,864	(1,408)	(2.3)	c/	508.94	c/
Payments (\$ in millions).....	\$30.0	\$0.3	0.9	c/	xxxxxx	xxxxxx
Zero Parent Families - persons.....	293,461	2,986	1.0	c/	xxxxxx	xxxxxx
Children.....	293,461	2,986	1.0	c/	xxxxxx	xxxxxx
Cases.....	152,418	9,828	6.9	c/	446.41	c/
Payments (\$ in millions).....	\$68.0	(\$1.3)	(1.9)	c/	xxxxxx	xxxxxx
All Other Families - persons.....	973,300	5,256	0.5	c/	xxxxxx	xxxxxx
Children.....	679,956	(2,354)	(0.3)	c/	xxxxxx	xxxxxx
Cases.....	328,253	(2,571)	(0.8)	c/	483.68	c/
Payments (\$ in millions).....	\$158.8	\$1.1	0.7	c/	xxxxxx	xxxxxx
Foster Care Program (FC) - children d/.....	78,169	(1,641)	(2.1)	(7.0)	1,322.44	1,223.64
Foster Family Home placements.....	52,311	(1,188)	(2.2)	(9.5)	662.39	592.86
Foster Family Agency placements.....	15,928	(239)	(1.5)	0.6	1,745.17	1,660.44
Group Home placements.....	9,930	(214)	(2.1)	(5.0)	4,612.78	4,309.81
Foster Care payments (\$ in millions).....	\$103.4	(\$6.02)	(5.5)	0.5	xxxxxx	xxxxxx
Supplemental Security Income/State Supplementary Payment (SSI/SSP) - persons e/.....	1,075,260	(2,688)	(0.2)	2.0	xxxxxx	xxxxxx
Aged.....	332,879	(445)	(0.1)	1.5	443.91	435.22
Blind.....	21,825	(35)	(0.2)	(0.1)	544.13	531.91
Disabled.....	720,556	(2,208)	(0.3)	2.3	527.07	520.49
SSI/SSP payments (\$ in millions).....	\$539.4	(\$8.1)	(1.5)	3.5	xxxxxx	xxxxxx
General Relief (GR) - persons.....	82,055	(808)	(1.0)	(14.6)	262.69	240.99
	September 2000	August 2000	September 1999			
California unemployment rate (seasonally adjusted).....	4.8%	5.1%	5.0%			
California population on assistance a/.....	8.9	8.0	8.5			

a/ Persons receiving CalWORKs, FC, SSI/SSP, or GR.

b/ All CalWORKs data is for cash grant cases only.

c/ Effective with the October 1999 report month, the source form (CA 237 CalWORKs) was changed to collect families data. Comparison to prior year data and prior year average monthly benefits will appear on the October 2000 PAFF.

d/ Number of children for whom foster care payments have been made. Does not include services only children.

e/ Estimate based on preliminary data from the Social Security Administration.

Data represents the most current statistics available at the time of publication. Current month includes prior period and preliminary data if current month is not reported timely by CWD. Prior period data is updated to include the most current information, including county reported changes/updates.

For additional information, contact Data Analysis and Publications Branch at (916) 653-4180, via the Internet at [infosvc@dss.ca.gov](mailto:infosvc@dss.ca.gov), or visit our web site at: <http://www.dss.cahwnet.gov/research/default.htm>

Non-Cash Grant Programs	Recipients				Average Monthly Benefits	
	September 2000	August 2000	Percent Change from		September 2000	September 1999
			August 2000	September 1999		
					\$	\$
					Average Coupon Value	
Federal Food Stamp (FS) Program						
Persons.....	1,742,168	(4,717)	(0.3)	(9.4)	73.29	70.12
Assistance: persons.....	1,151,714	(2,903)	(0.3)	(11.1)	xxxxxx	xxxxxx
households f/.....	385,758	(887)	(0.2)	(11.1)	xxxxxx	xxxxxx
Nonassistance: persons.....	590,454	(1,814)	(0.3)	(5.9)	xxxxxx	xxxxxx
households f/.....	252,603	(1,192)	(0.5)	(8.5)	xxxxxx	xxxxxx
Expenditures paid (\$ in millions).....	\$127.7	\$1.3	1.0	(5.3)	xxxxxx	xxxxxx
California Food Assistance Program (CFAP)						
Persons.....	83,584	(2,348)	(2.7)	(3.1)	45.79	42.74
Assistance: persons.....	52,322	(2,347)	(4.3)	(14.7)	xxxxxx	xxxxxx
households g/.....	13,915	(35)	(0.3)	(11.6)	xxxxxx	xxxxxx
Nonassistance: persons.....	31,262	(1)	(0.0)	25.5	xxxxxx	xxxxxx
households g/.....	12,455	72	0.6	20.1	xxxxxx	xxxxxx
Expenditures paid (\$ in millions).....	\$3.8	(\$0.2)	(5.8)	3.8	xxxxxx	xxxxxx
In-Home Supportive Services (IHSS)					Average Cost Per Person h/	
Cases open at end of month.....	242,377	4,066	1.7	7.5	547.35	517.87
Hours of service paid.....	19,061,773	(253,324)	(1.3)	9.6	xxxxxx	xxxxxx
Expenditures paid (\$ in millions).....	\$127.5	(\$0.8)	(0.6)	16.2	xxxxxx	xxxxxx
Adult Protective Services (APS)						
Cases opened during the month.....	5,889	(312)	(5.0)	12.3	xxxxxx	xxxxxx
Cases carried forward to next month.....	15,381	60	0.4	40.0	xxxxxx	xxxxxx
Investigations of self neglect i/.....	1,565	(109)	(6.5)	20.3	xxxxxx	xxxxxx
Investigations of abuse perpetrated by others i/.....	1,077	(114)	(9.6)	17.1	xxxxxx	xxxxxx

f/ Combined count of Federal only and a portion of Federal-CFAP mixed households based on the percentage of Federal persons in Federal-CFAP mixed households.

g/ Combined count of State only and a portion of Federal-CFAP mixed households based on the percentage of State persons in Federal-CFAP mixed households.

h/ Based on paid cases for the month.

i/ Confirmed and unduplicated investigations.

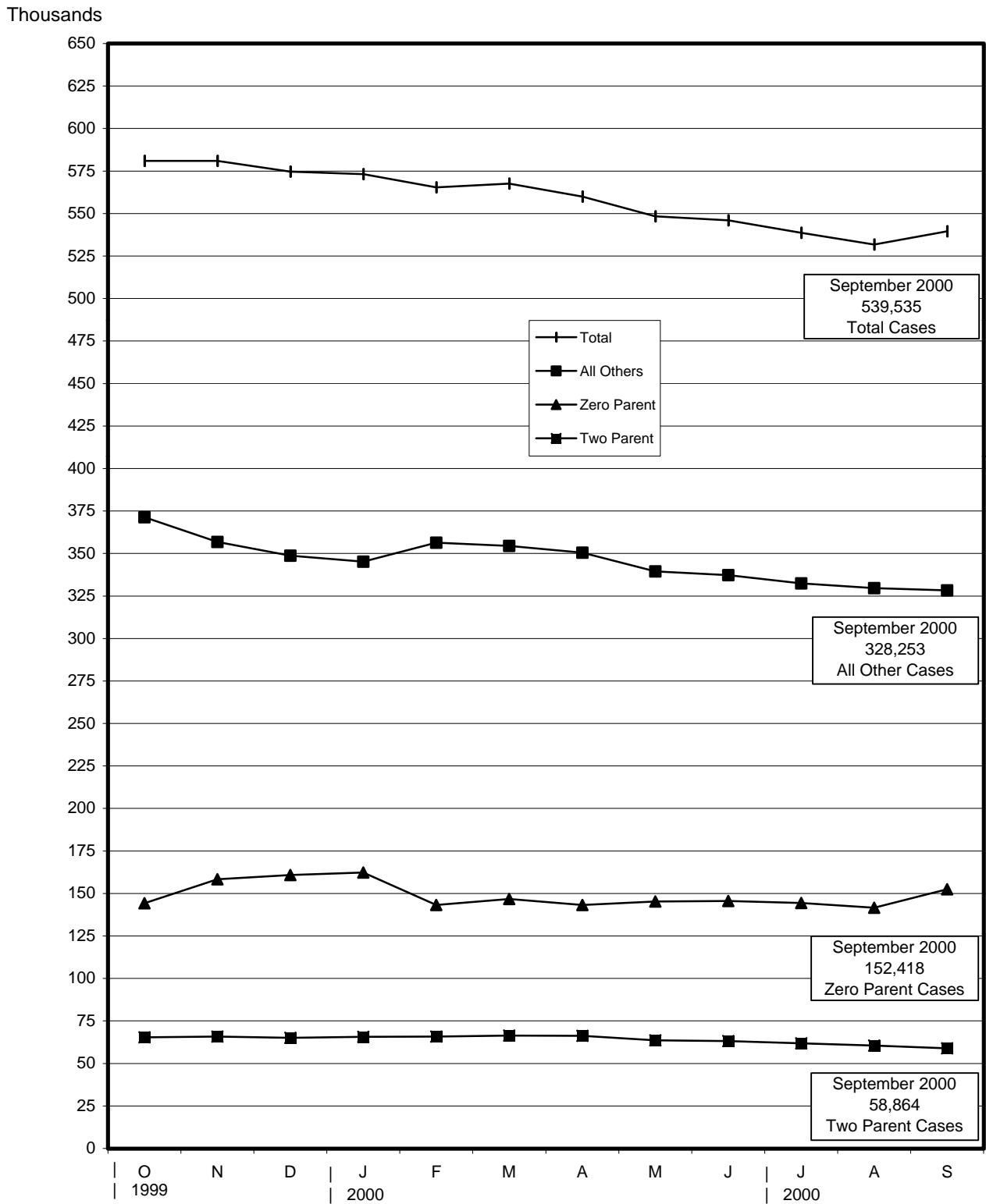
### CalWORKs Non-Exempt Assistance Units Maximum Aid Payment (MAP) and Food Stamp (FS) Allotment

MAP Effective (7/1/99)			FS Allotments (10/1/99 - 9/30/00)	
Eligible persons in the same home	Region 1	Region 2	Eligible persons in the FS household	Maximum Coupon Allotment
1	\$310	\$294	1	\$127
2	505	481	2	234
3	626	596	3	335
4	746	710	4	426
5	849	808	5	506
6	953	907	6	607
7	1,048	996	7	671
8	1,141	1,086	8	767
9	1,233	1,173	9	863
10+	1,324	1,260	10+	959

### SSI/SSP Grant Levels (effective 1/1/00)

	Aged or Disabled			Blind		
	Total	SSI	SSP	Total	SSI	SSP
Individual	\$	\$	\$	\$	\$	\$
Independent.....	692.00	512.00	180.00	749.00	512.00	237.00
Household of another.....	529.00	341.34	187.66	599.00	341.34	257.66
Nonmedical Out-of-Home Care.....	847.00	512.00	335.00	847.00	512.00	335.00
Couple						
Independent, neither member blind.....	1,229.00	769.00	460.00	xxx	xxx	xxx
Independent, one member blind.....	xxx	xxx	xxx	1,351.00	769.00	582.00
Independent, both members blind.....	xxx	xxx	xxx	1,424.00	769.00	655.00
Nonmedical Out-of-Home Care.....	1,694.00	769.00	925.00	1,694.00	769.00	925.00

# CalWORKs Caseload by Category October 1999 - September 2000

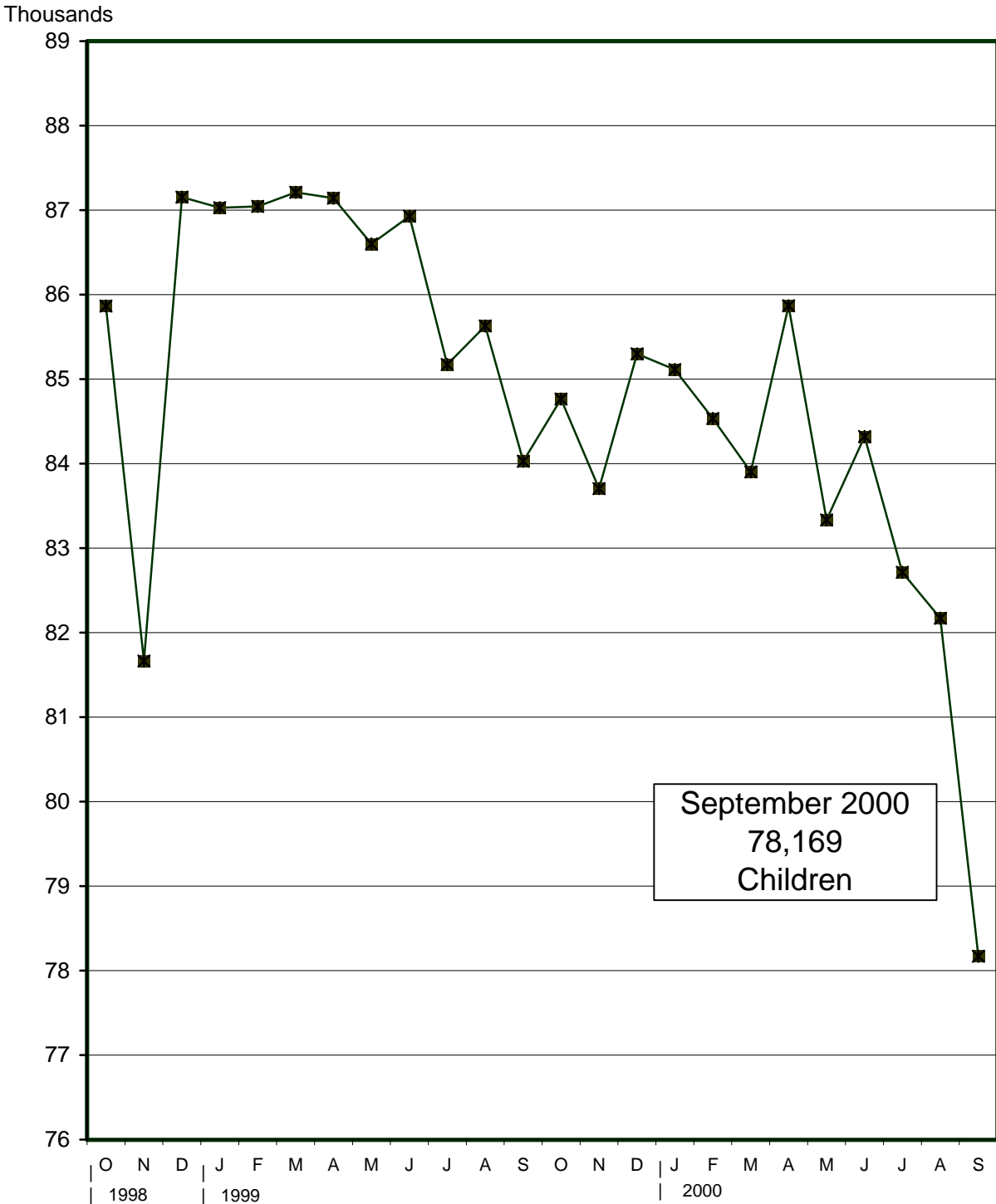


Note: reporting of caseload statistics by the two parent, zero parent, and all others categories began October 1999.

# Foster Care Program

## Children Placed in Foster Care<sup>1/</sup>

### October 1998 - September 2000



1/ Number of children for whom foster care payments have been made does not include services only children.

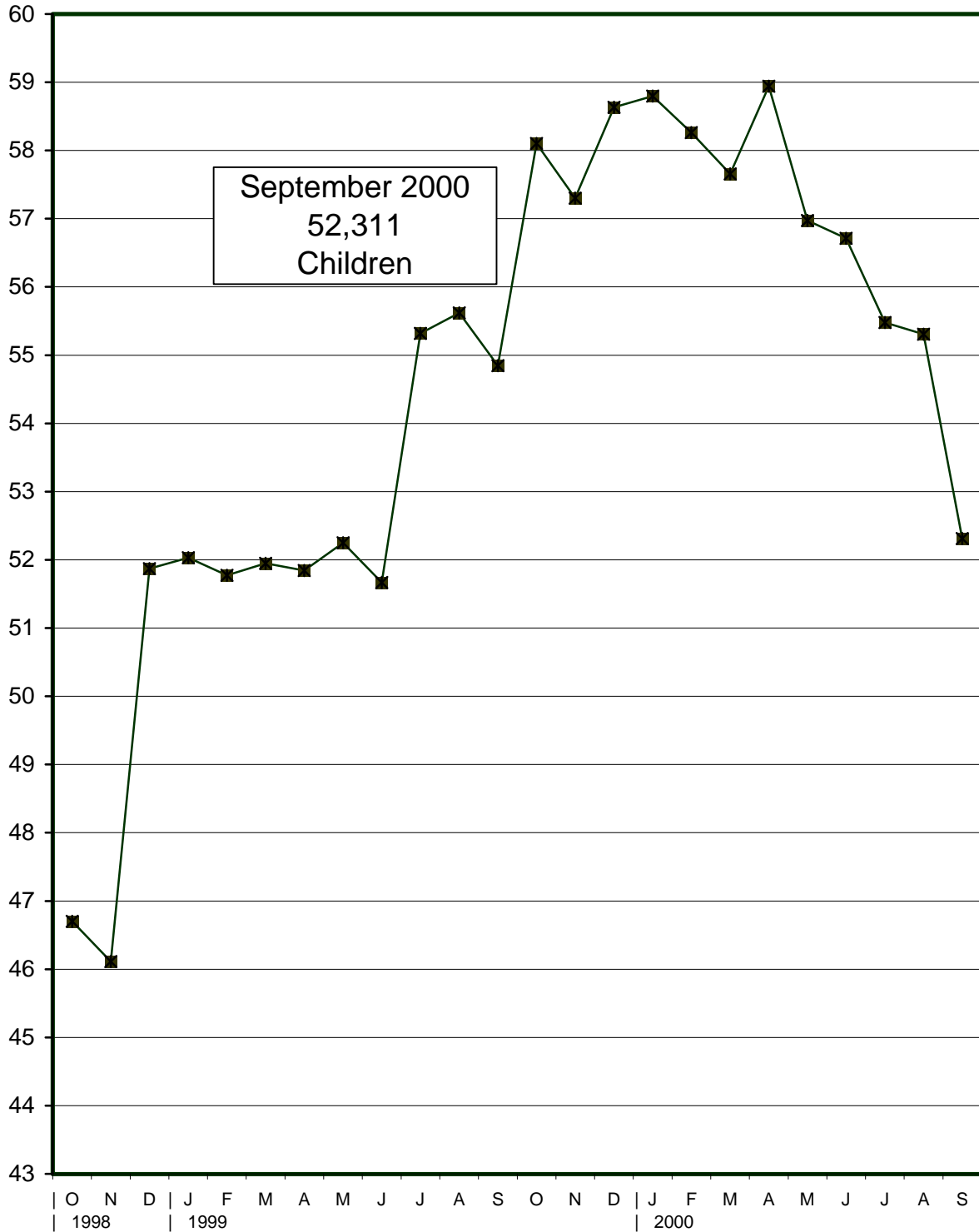
Notes: October 1998 - November 1998: large decrease due to 3,300 reduction in Group Home placements in LA County.  
November 1998 - December 1998: large increase due to 3,300 increase in Foster Family Home placements in LA County.

# Foster Care Program

## Children Placed in Foster Family Homes<sup>1/</sup>

### October 1998 - September 2000

Thousands



<sup>1/</sup> Number of children for whom foster care payments have been made does not include services only children.

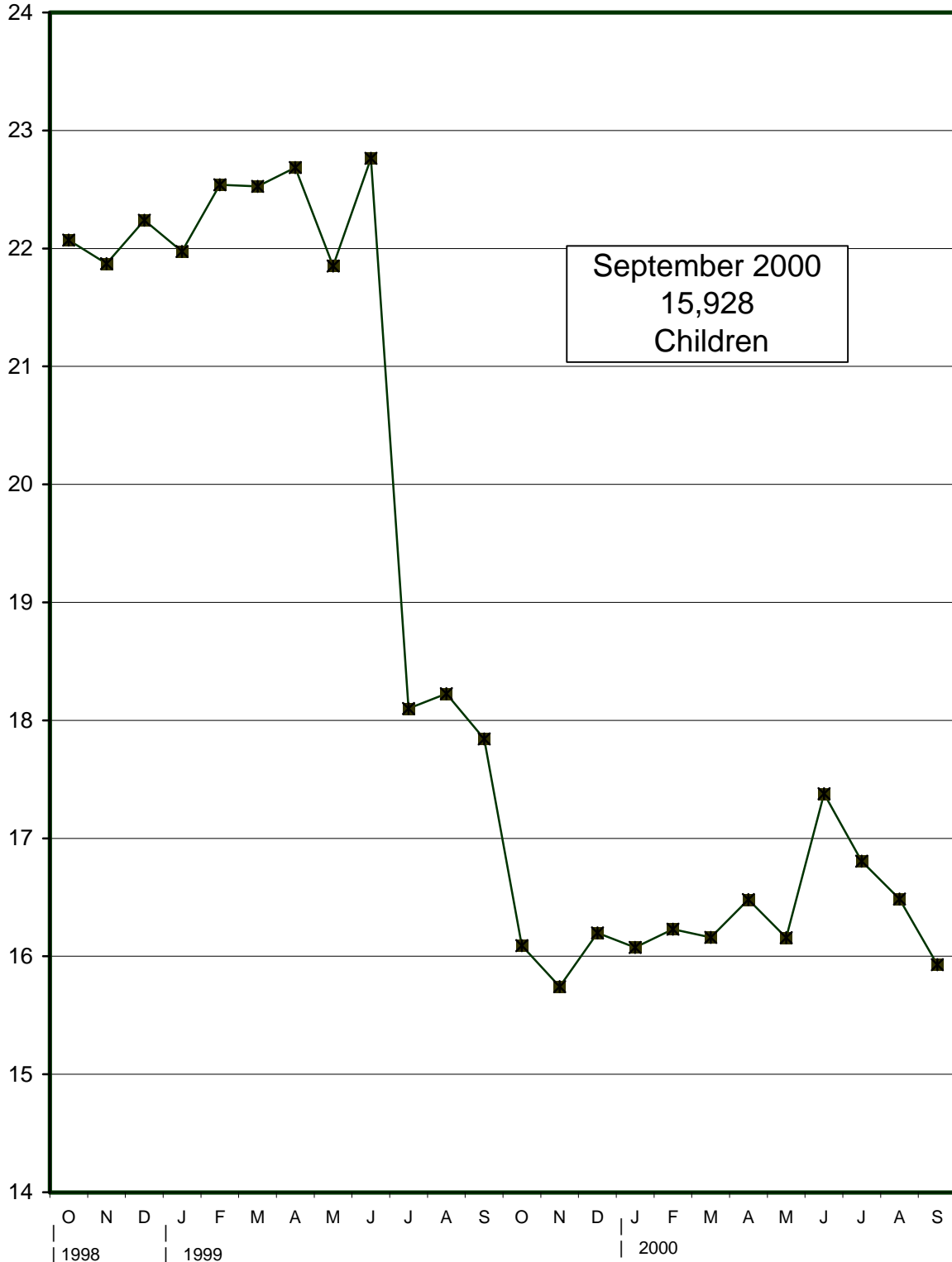
Note: November 1998 - December 1998: large increase due to 3,300 increase in Foster Family Home placements in LA County.

# Foster Care Program

## Children Placed in Foster Family Agencies<sup>1/</sup>

### October 1998 - September 2000

Thousands

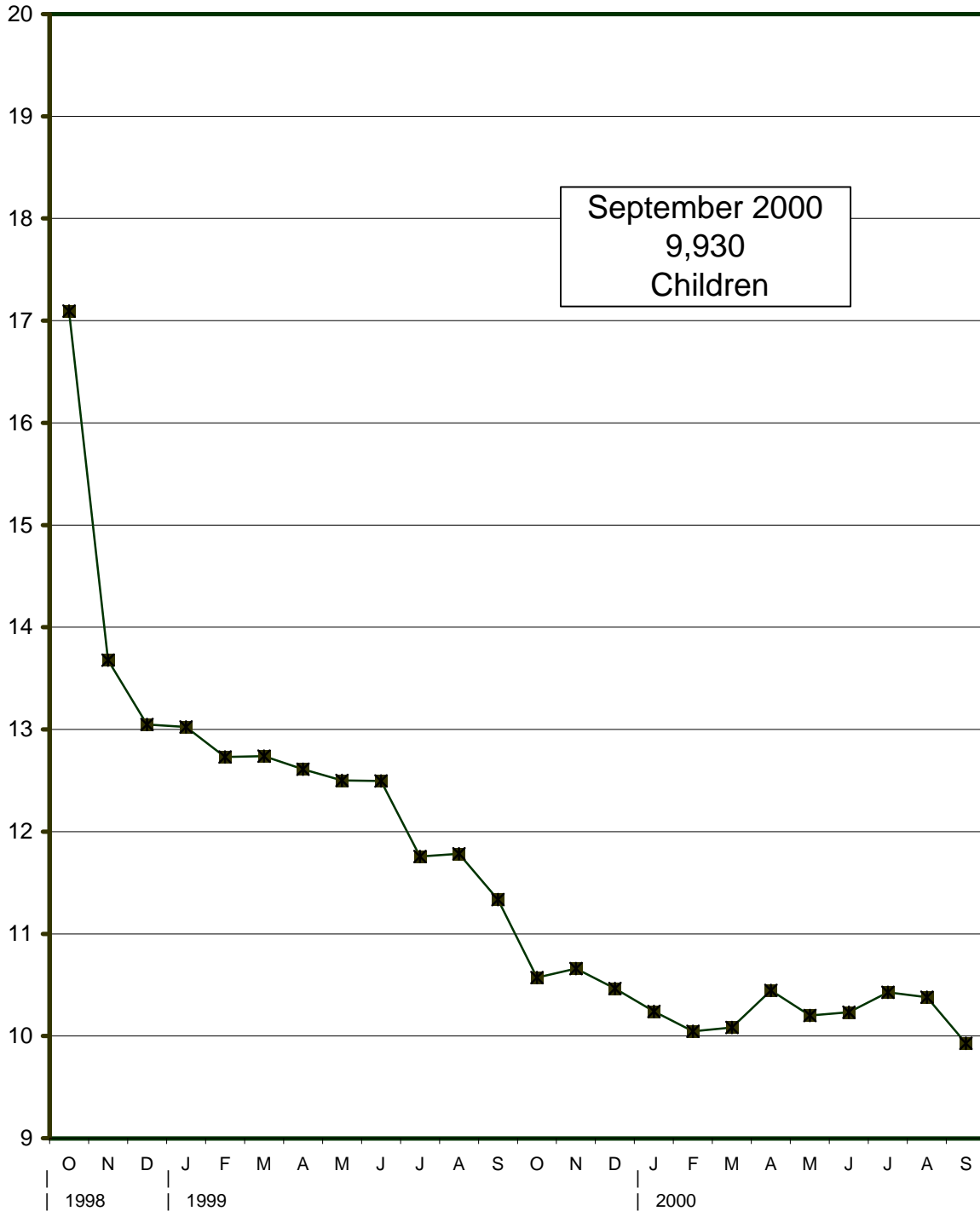


<sup>1/</sup> Number of children for whom foster care payments have been made does not include services only children.

Note: June 1999 - July 1999: source document (CA 237 FC) revised July 1999 to obtain more accurate reporting of placement categories.

# Foster Care Program Children Placed in Group Homes<sup>1/</sup> October 1998 - September 2000

Thousands

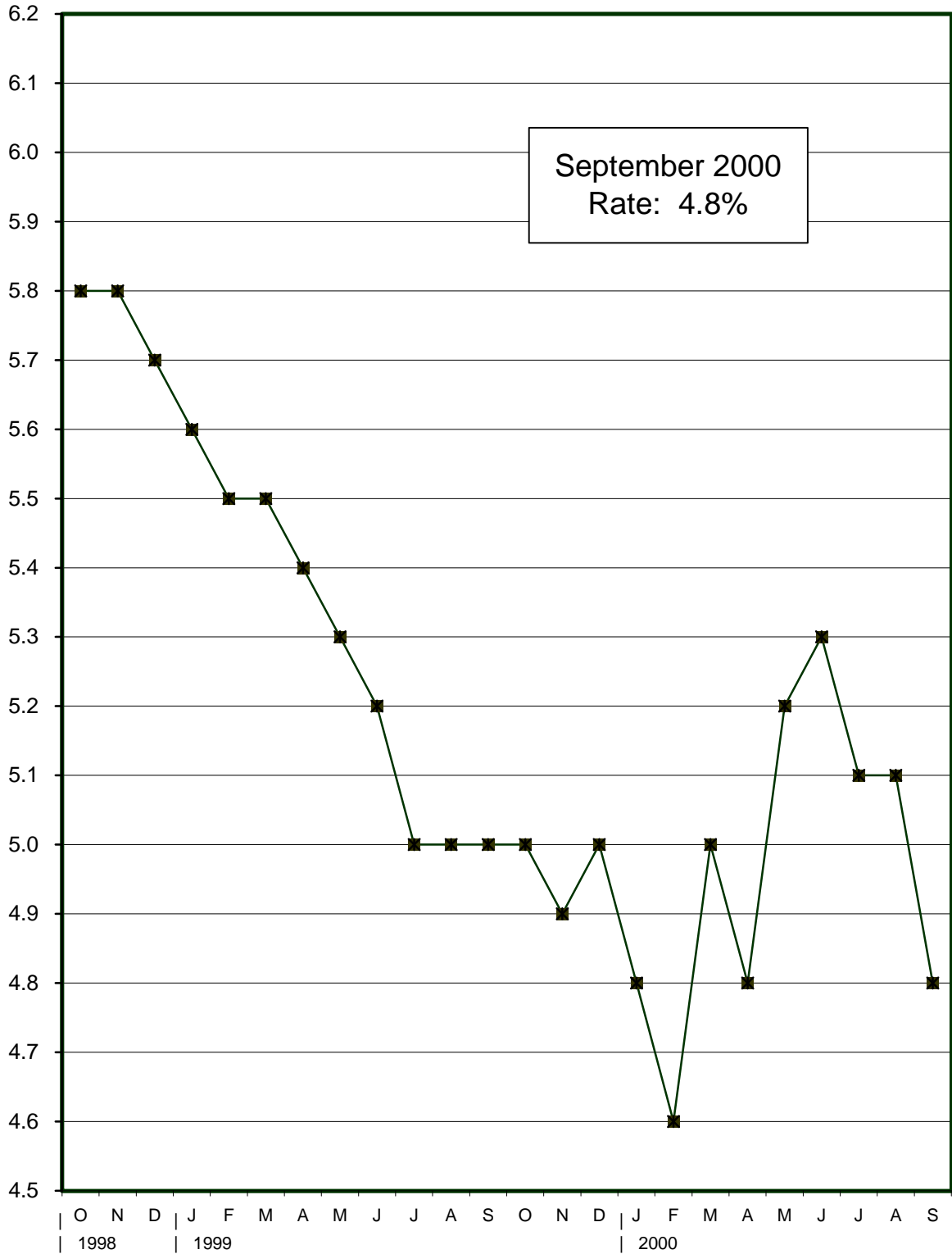


<sup>1/</sup> Number of children for whom foster care payments have been made does not include services only children.

Note: October 1998 - November 1998: large decrease due to 3,300 reduction in Group Home placements in LA County.

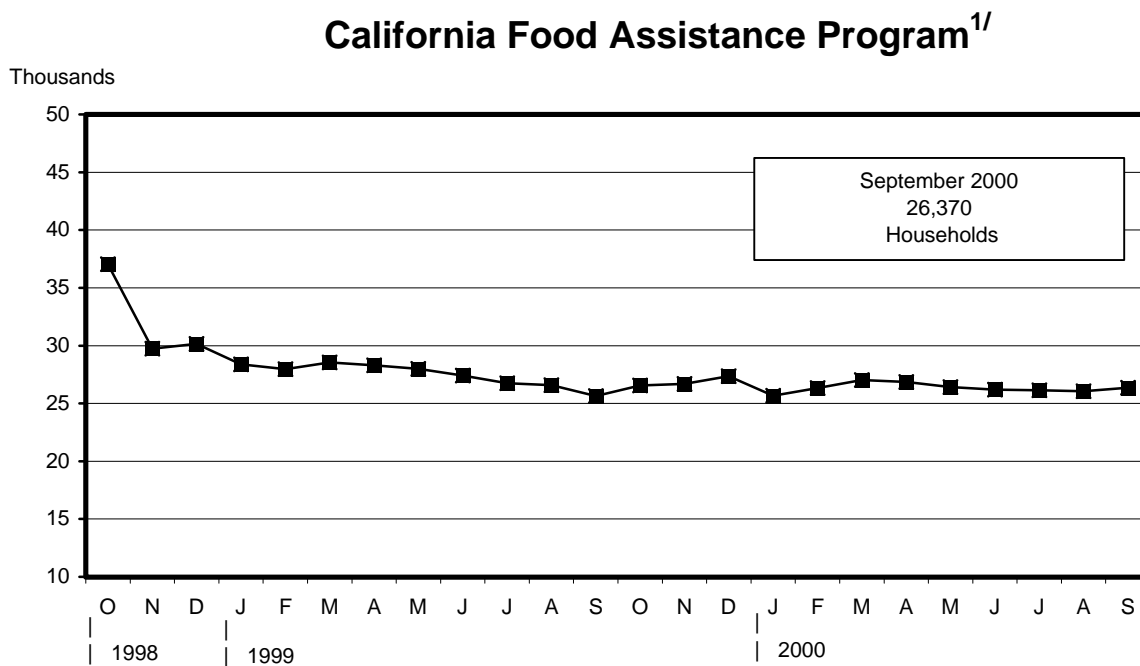
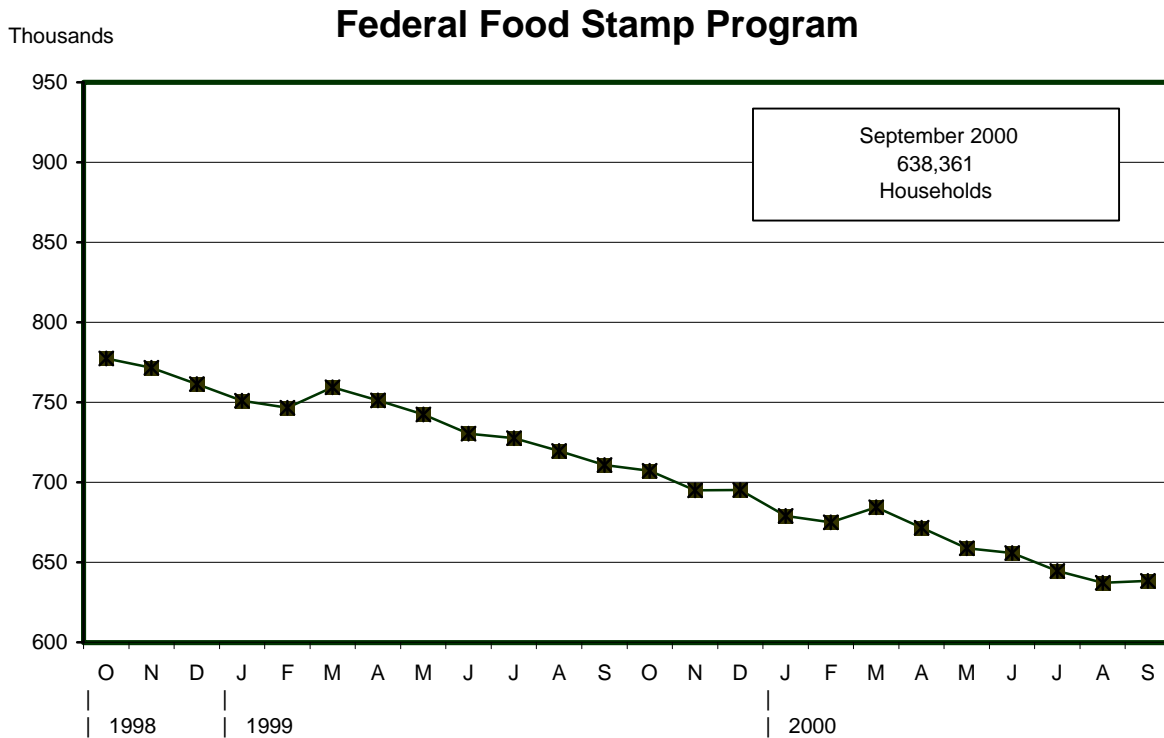
# California Unemployment Rate Seasonally Adjusted October 1998 - September 2000

Percent



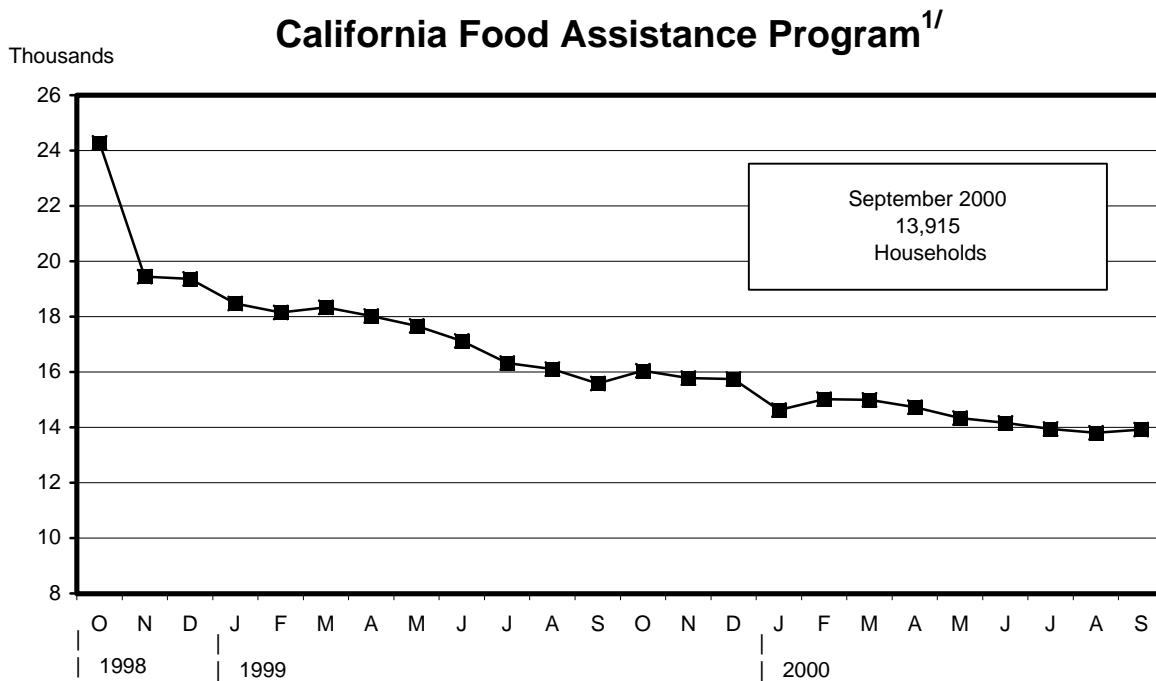
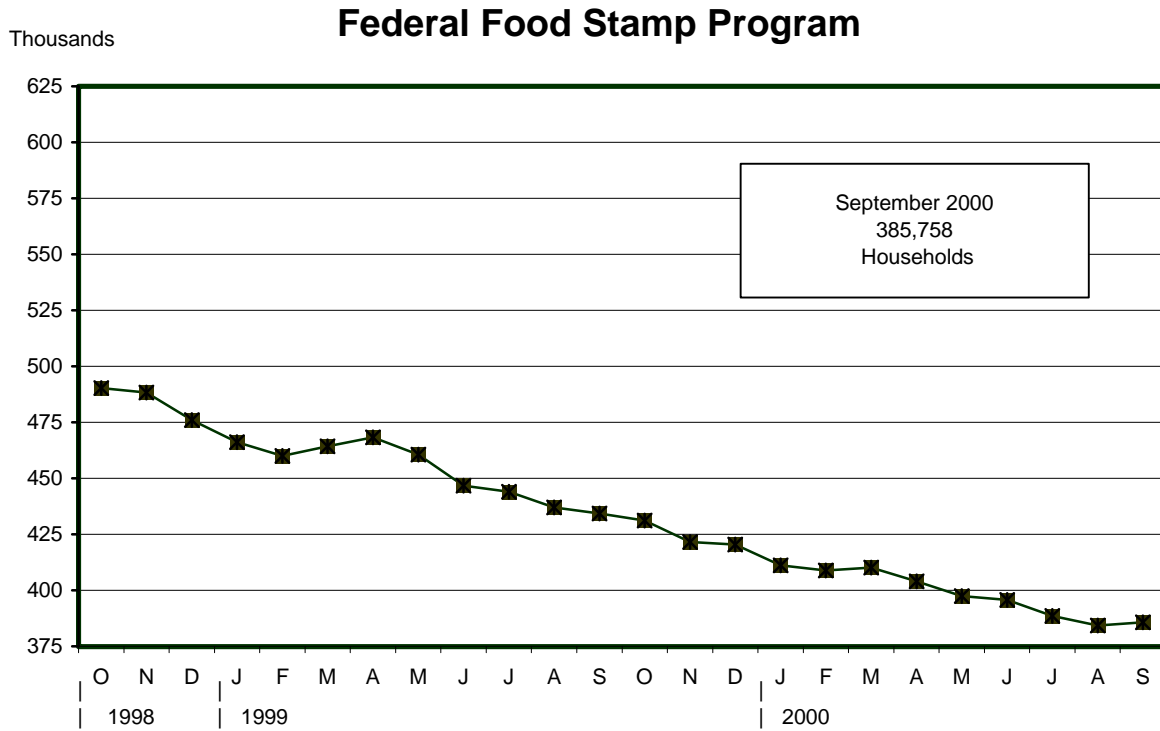


# Food Stamp Program Public Assistance and Nonassistance Households October 1998 - September 2000



<sup>1/</sup> In September 1998, program rules were changed to allow certain legal immigrants to participate.

# Food Stamp Program Households Also Receiving Public Assistance October 1998 - September 2000

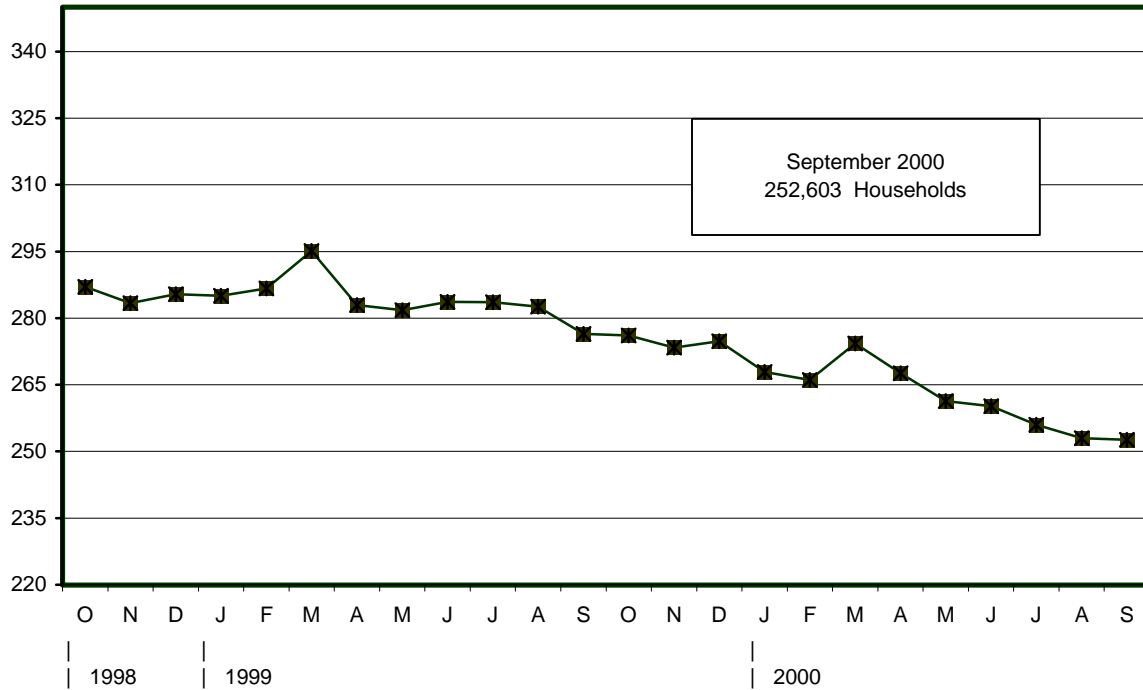


<sup>1/</sup> In September 1998, program rules were changed to allow certain legal immigrants to participate.

# Food Stamp Program Nonassistance Households October 1998 - September 2000

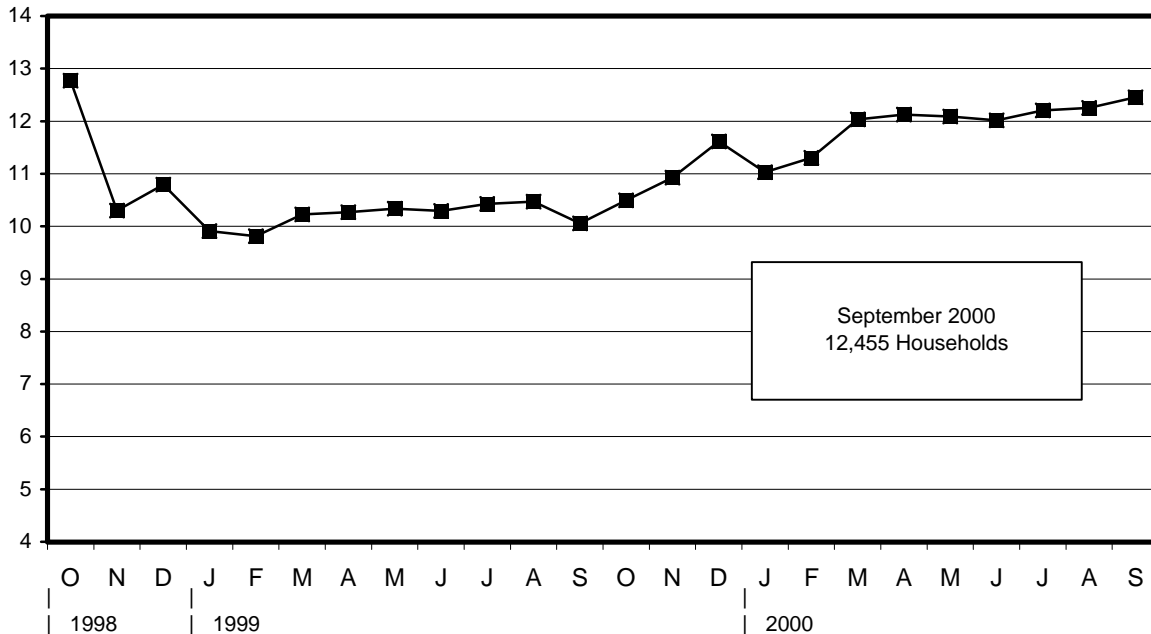
Thousands

## Federal Food Stamp Program



Thousands

## California Food Assistance Program<sup>1/</sup>



<sup>1/</sup> In September 1998, program rules were changed to allow certain legal immigrants to participate.