

Public Assistance Facts and Figures

For the Month of
May 2001

Cash Grant Programs

California Work Opportunity and Responsibility to Kids (CalWORKs)
Foster Care (FC)
Supplemental Security Income/State Supplementary Payment (SSI/SSP)
General Relief (GR)

Non-Cash Grant Programs

Federal Food Stamp Program (FS)
California Food Assistance Program (CFAP)
In-Home Supportive Services (IHSS)
Adult Protective Services (APS)

Public Assistance Facts and Figures

December 11, 2001

May 2001

Cash Grant Programs	Recipients				Average Monthly Benefits	
	Absolute Change from		Percent Change from		May 2001	May 2000
	May 2001	April 2001	April 2001	May 2000		
Total cash grant recipients a/.....	2,721,593	(23,740)	(0.9)	(2.2)	\$ xxxxxx	\$ xxxxxx
California Work Opportunity and Responsibility to Kids (CalWORKs) - persons b/.....	1,468,643	(25,258)	(1.7)	(4.9)	xxxxxx	xxxxxx
Children.....	1,096,129	(15,807)	(1.4)	(4.1)	xxxxxx	xxxxxx
Cases.....	519,959	(6,758)	(1.3)	(5.2)	474.62	490.11
CalWORKs payments (\$ in millions).....	\$246.8	(\$7.5)	(3.0)	(8.2)	xxxxxx	xxxxxx
Two Parent Families - persons.....	242,190	(9,111)	(3.6)	(12.2)	xxxxxx	xxxxxx
Children.....	145,776	(5,328)	(3.5)	(13.4)	xxxxxx	xxxxxx
Cases.....	54,637	(1,692)	(3.0)	(14.1)	516.84	515.60
Payments (\$ in millions).....	\$28.2	(\$1.7)	(5.5)	(13.8)	xxxxxx	xxxxxx
Zero Parent Families - persons.....	331,751	183	0.1	19.5	xxxxxx	xxxxxx
Children.....	331,751	183	0.1	19.5	xxxxxx	xxxxxx
Cases.....	167,054	(97)	(0.1)	14.9	404.32	482.33
Payments (\$ in millions).....	\$67.5	(\$1.8)	(2.6)	(3.7)	xxxxxx	xxxxxx
All Other Families - persons.....	894,702	(16,330)	(1.8)	(9.7)	xxxxxx	xxxxxx
Children.....	618,602	(10,662)	(1.7)	(11.3)	xxxxxx	xxxxxx
Cases.....	298,268	(4,969)	(1.6)	(12.1)	506.26	488.67
Payments (\$ in millions).....	\$151.0	(\$4.1)	(2.6)	(9.0)	xxxxxx	xxxxxx
Foster Care Program (FC) - children c/.....	74,931	1,315	1.8	(8.4)	1,433.96	1,299.53
Foster Family Home placements.....	48,424	367	0.8	(12.6)	670.58	627.20
Foster Family Agency placements.....	16,299	782	5.0	0.9	1,800.66	1,774.53
Group Home placements.....	10,208	166	1.7	0.1	5,000.06	4,548.35
Foster Care payments (\$ in millions).....	\$107.4	\$0.23	0.2	1.1	xxxxxx	xxxxxx
Supplemental Security Income/State Supplementary Payment (SSI/SSP) - persons d/.....	1,089,307	54	0.0	1.6	xxxxxx	xxxxxx
Aged.....	334,044	(183)	(0.1)	0.8	455.44	446.46
Blind.....	21,842	19	0.1	(0.2)	562.27	548.14
Disabled.....	733,421	218	0.0	2.1	543.16	535.89
SSI/SSP payments (\$ in millions).....	\$562.8	(\$5.5)	(1.0)	3.3	xxxxxx	xxxxxx
General Relief (GR) - persons.....	88,712	149	0.2	5.0	236.77	250.95
	May 2001	April 2001	May 2000			
California unemployment rate (seasonally adjusted).....	4.9%	4.9%	5.0%			
California population on assistance a/.....	8.6	8.7	9.1			

a/ Persons receiving CalWORKs, FC, SSI/SSP, or GR.

b/ All CalWORKs data is for cash grant cases only.

c/ Number of children for whom foster care payments have been made. Does not include services only children.

d/ Estimate based on preliminary data from the Social Security Administration.

Data represents the most current statistics available at the time of publication. Current month includes prior period and preliminary data if current month is not reported timely by the County. Prior period data is updated to include the most current information, including county reported changes/updates.

For additional information, contact Data Analysis and Publications Branch at (916) 653-4180, via the Internet at infosvc@dss.ca.gov, or visit our web site at: <http://www.dss.cahwnet.gov/research/default.htm>

Non-Cash Grant Programs	Recipients				Average Monthly Benefits	
	Absolute Change from		Percent Change from		May 2001	May 2000
	May	April	April	May		
	2001	2001	2001	2000	\$	
					Average Coupon Value	
Federal Food Stamp (FS) Program						
Persons.....	1,663,198	33,899	2.1	(7.1)	75.85	72.83
Assistance: persons.....	969,108	12,834	1.3	(18.0)	xxxxxx	xxxxxx
households e/.....	334,652	6,102	1.9	(15.7)	xxxxxx	xxxxxx
Nonassistance: persons.....	694,090	21,065	3.1	14.2	xxxxxx	xxxxxx
households e/.....	288,285	9,771	3.5	10.4	xxxxxx	xxxxxx
Expenditures paid (\$ in millions).....	\$126.1	\$4.1	3.4	(3.2)	xxxxxx	xxxxxx
California Food Assistance Program (CFAP) f/						
Persons.....	81,601	(21,963)	(21.2)	(8.2)	74.81	46.25
Assistance: persons.....	42,280	(20,149)	(32.3)	(26.2)	xxxxxx	xxxxxx
households g/.....	11,824	(6,755)	(36.4)	(19.2)	xxxxxx	xxxxxx
Nonassistance: persons.....	39,321	(1,814)	(4.4)	24.5	xxxxxx	xxxxxx
households g/.....	16,085	(751)	(4.5)	30.1	xxxxxx	xxxxxx
Expenditures paid (\$ in millions).....	\$6.1	(\$1.7)	(21.7)	48.5	xxxxxx	xxxxxx
In-Home Supportive Services (IHSS)					Average Cost Per Person h/	
Persons receiving paid services.....	250,704	8,838	3.7	1.2	598.09	504.23
Hours of service paid.....	20,419,496	438,266	2.2	8.9	xxxxxx	xxxxxx
Expenditures paid (\$ in millions).....	\$149.9	\$2.8	1.9	20.1	xxxxxx	xxxxxx
Adult Protective Services (APS)						
Cases opened during the month.....	6,645	653	10.9	26.7	xxxxxx	xxxxxx
Cases carried forward to next month.....	15,662	63	0.4	42.6	xxxxxx	xxxxxx
Confirmed Investigations of self neglect i/.....	1,998	267	15.4	53.6	xxxxxx	xxxxxx
Confirmed Investigations of abuse by others i/.....	1,364	174	14.6	17.1	xxxxxx	xxxxxx

e/ Combined count of Federal only and a portion of Federal-CFAP mixed households based on the percentage of Federal persons in Federal-CFAP mixed households.
f/ Large fluctuations in data due to continuing implementation of the Los Angeles County LEADER system.
g/ Combined count of State only and a portion of Federal-CFAP mixed households based on the percentage of State persons in Federal-CFAP mixed households.
h/ Based on paid cases for the month.
i/ Confirmed and unduplicated investigations.

CalWORKs Non-Exempt Assistance Units Maximum Aid Payment (MAP) and Food Stamp (FS) Allotment

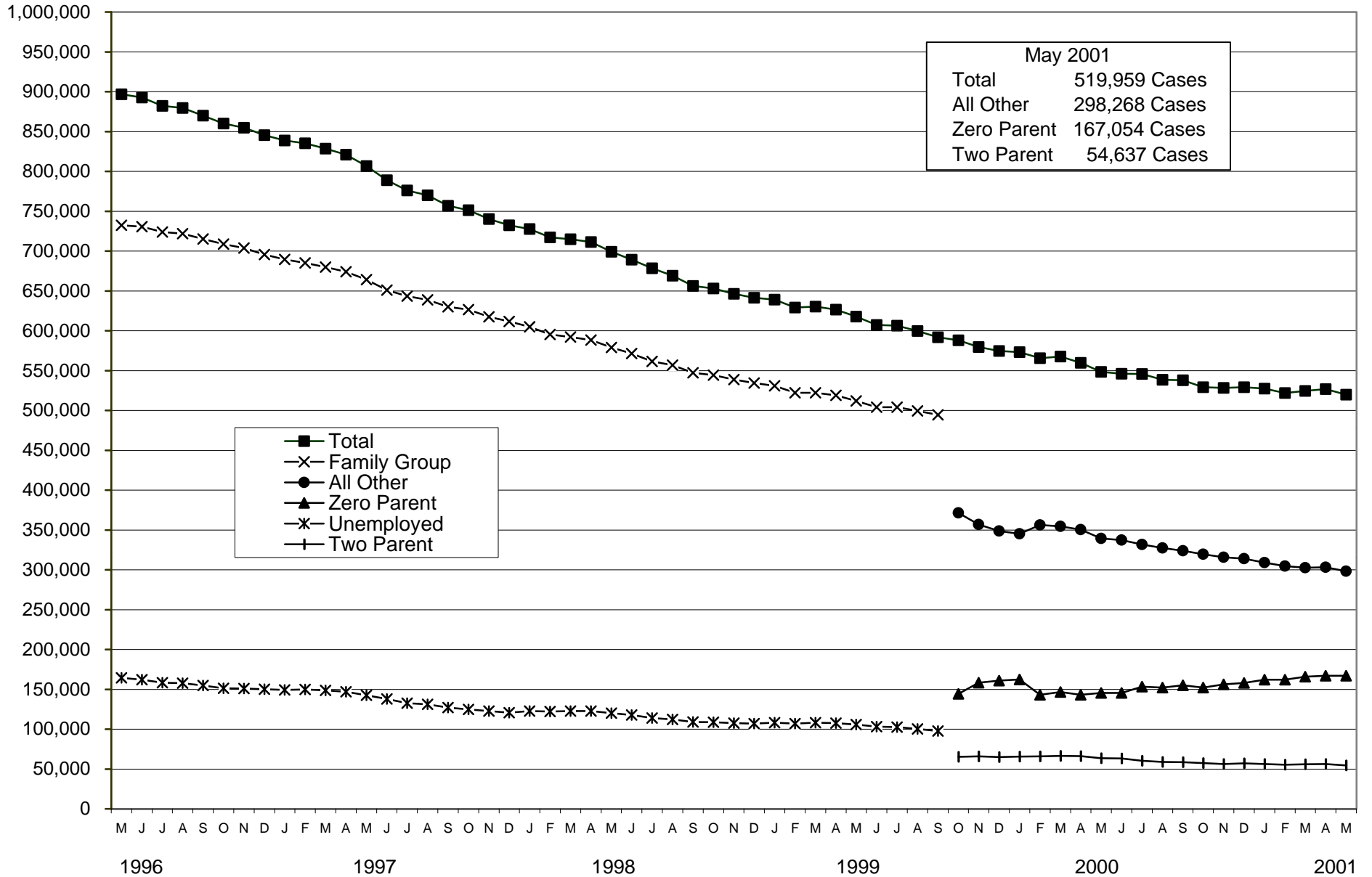
MAP (effective 10/1/00)			FS Allotments (10/1/00 - 9/30/01)	
Eligible persons in the same home	Region 1	Region 2	Eligible persons in the FS household	Maximum Coupon Allotment
1	\$319	\$303	1	\$130
2	520	495	2	238
3	645	614	3	341
4	768	731	4	434
5	874	832	5	515
6	981	934	6	618
7	1,079	1,025	7	683
8	1,175	1,118	8	781
9	1,269	1,208	9	879
10+	1,363	1,297	each additional person	98

SSI/SSP Grant Levels (effective 1/1/00)

	Aged or Disabled			Blind		
	Total	SSI	SSP	Total	SSI	SSP
Individual	\$	\$	\$	\$	\$	\$
Independent.....	712.00	530.00	182.00	771.00	530.00	241.00
Household of another.....	545.00	353.34	191.66	617.00	342.00	263.66
Nonmedical Out-of-Home Care.....	872.00	530.00	342.00	872.00	530.00	342.00
Couple						
Independent, neither member blind.....	1,265.00	796.00	469.00	xxx	xxx	xxx
Independent, one member blind.....	xxx	xxx	xxx	1,391.00	796.00	595.00
Independent, both members blind.....	xxx	xxx	xxx	1,466.00	796.00	670.00
Nonmedical Out-of-Home Care.....	1,744.00	796.00	948.00	1,744.00	796.00	948.00

CalWORKs Cases By Category

May 1996 - May 2001

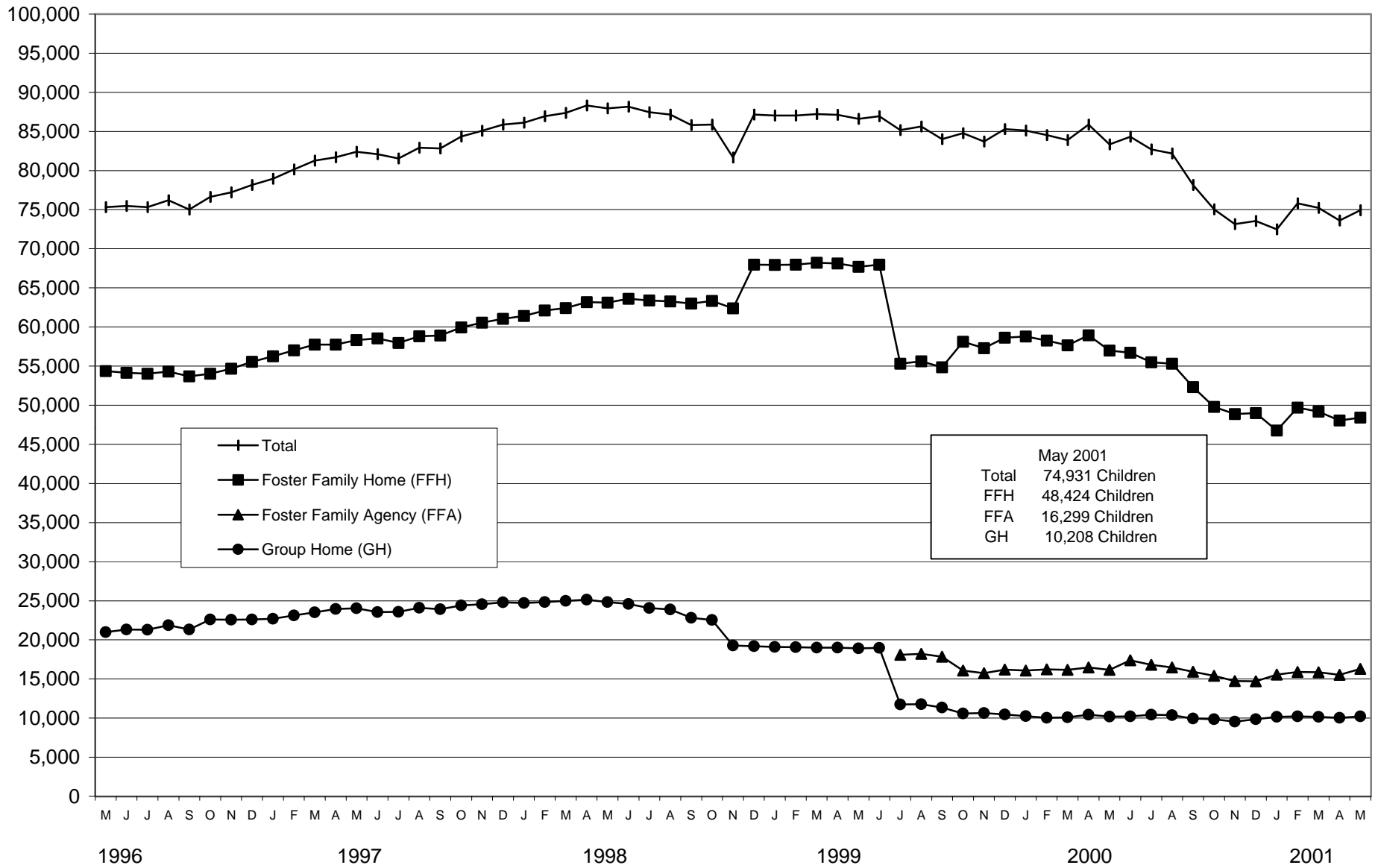


Note: Prior to October 1999, the AFDC/CalWORKs caseload was reported as either Family Group or Unemployed. Beginning October 1999, the categories were changed to Zero Parent, Two Parent, and All Other.

Foster Care Program

Federal and Non-Federal Children in Foster Care by Facility Type ^{1/}

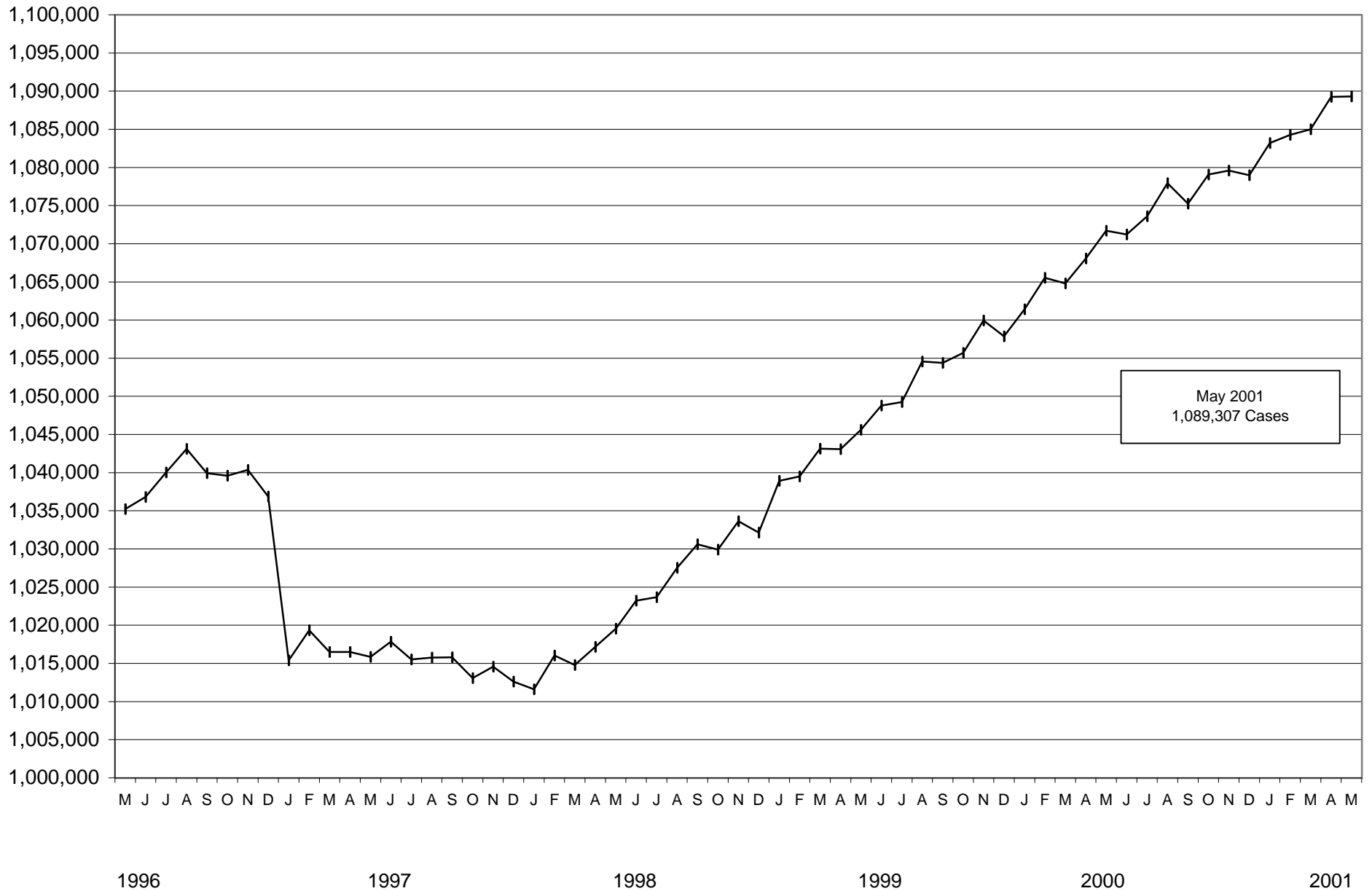
May 1996 - May 2001



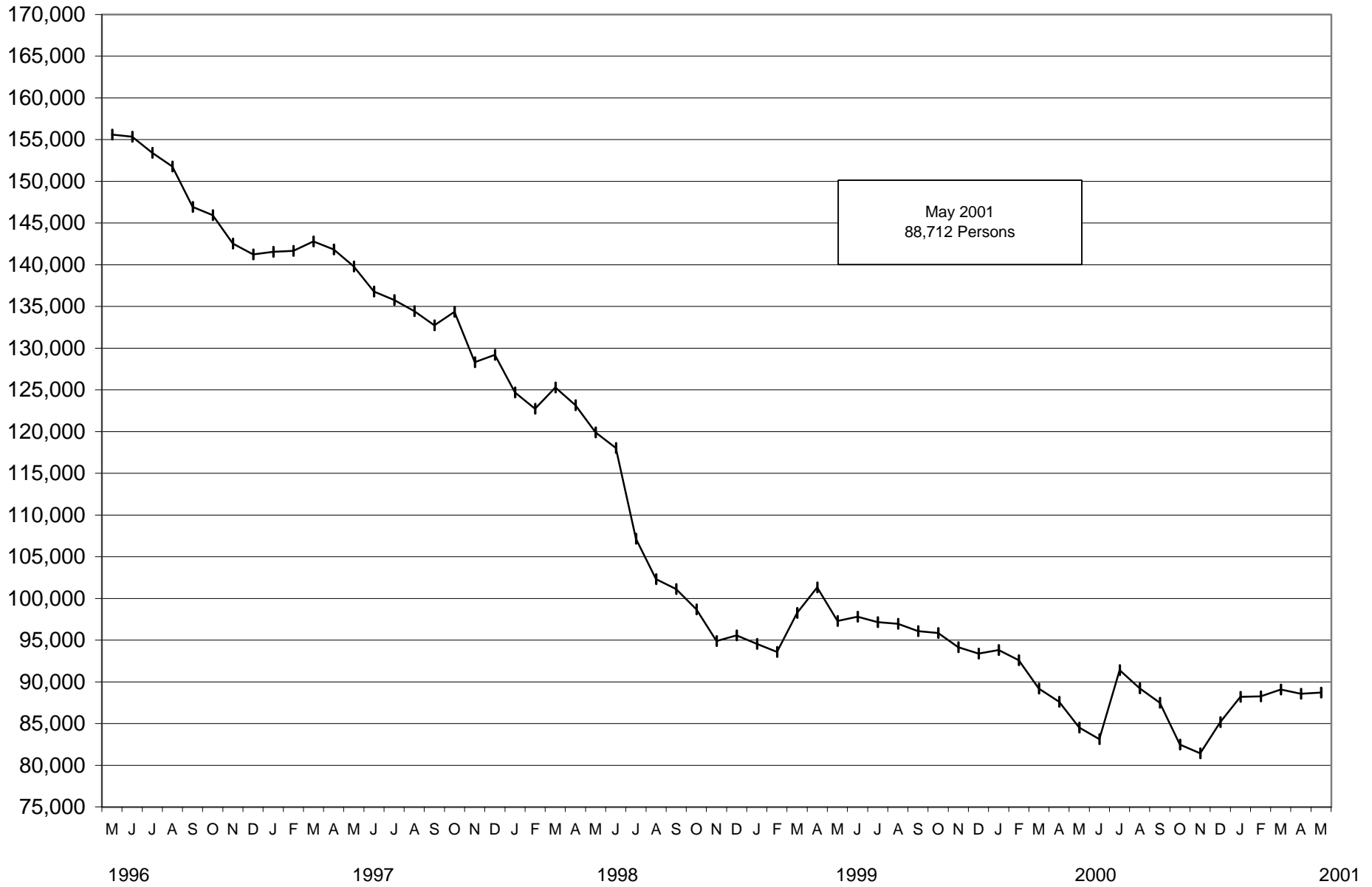
^{1/} Number of children for whom foster care payments have been made. Does not include services only children.

Note: FFA reporting started July 1999.

Supplemental Security Income/State Supplementary Payment Cases May 1996 - May 2001

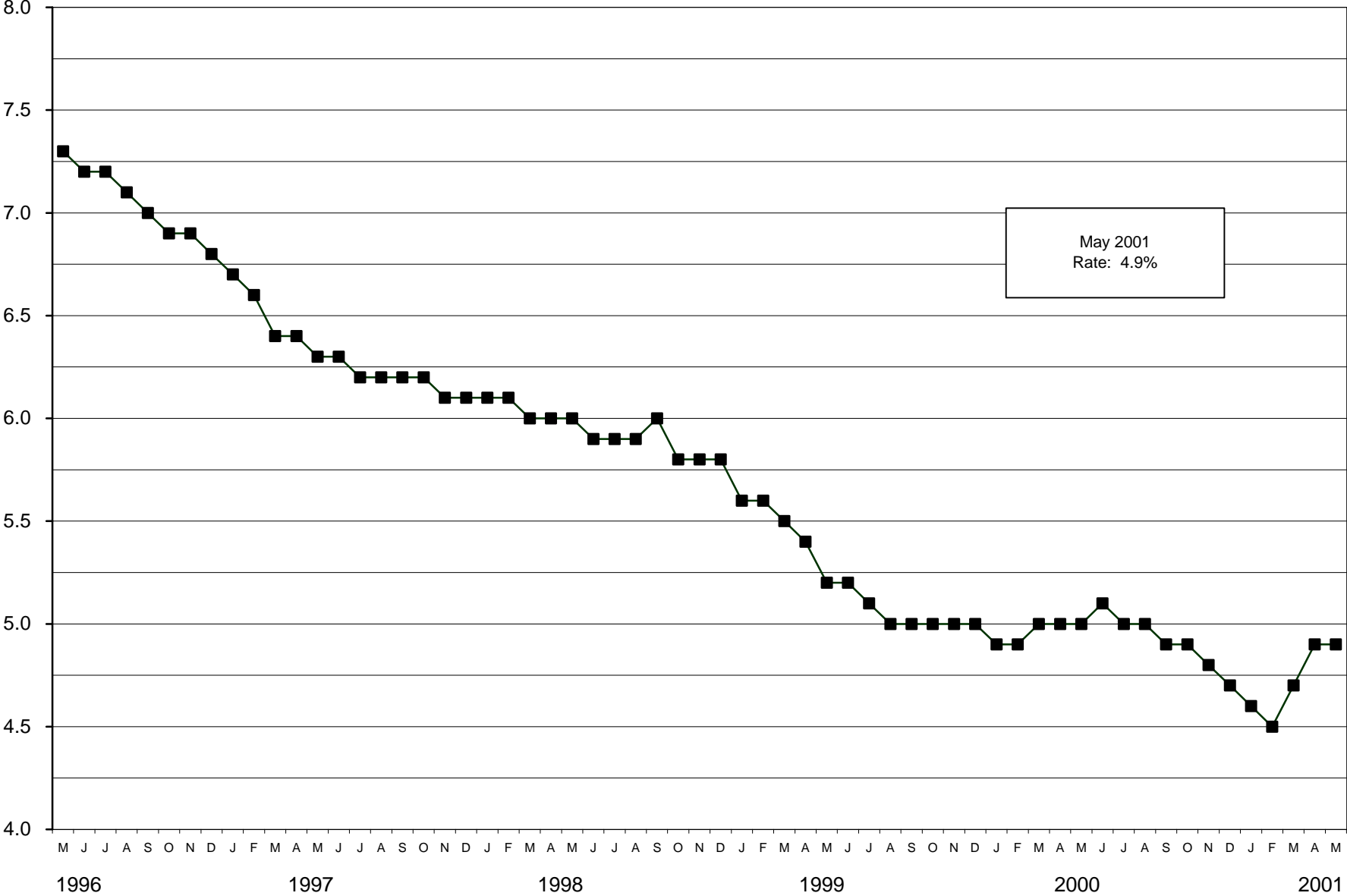


General Relief Number of Persons May 1996 - May 2001

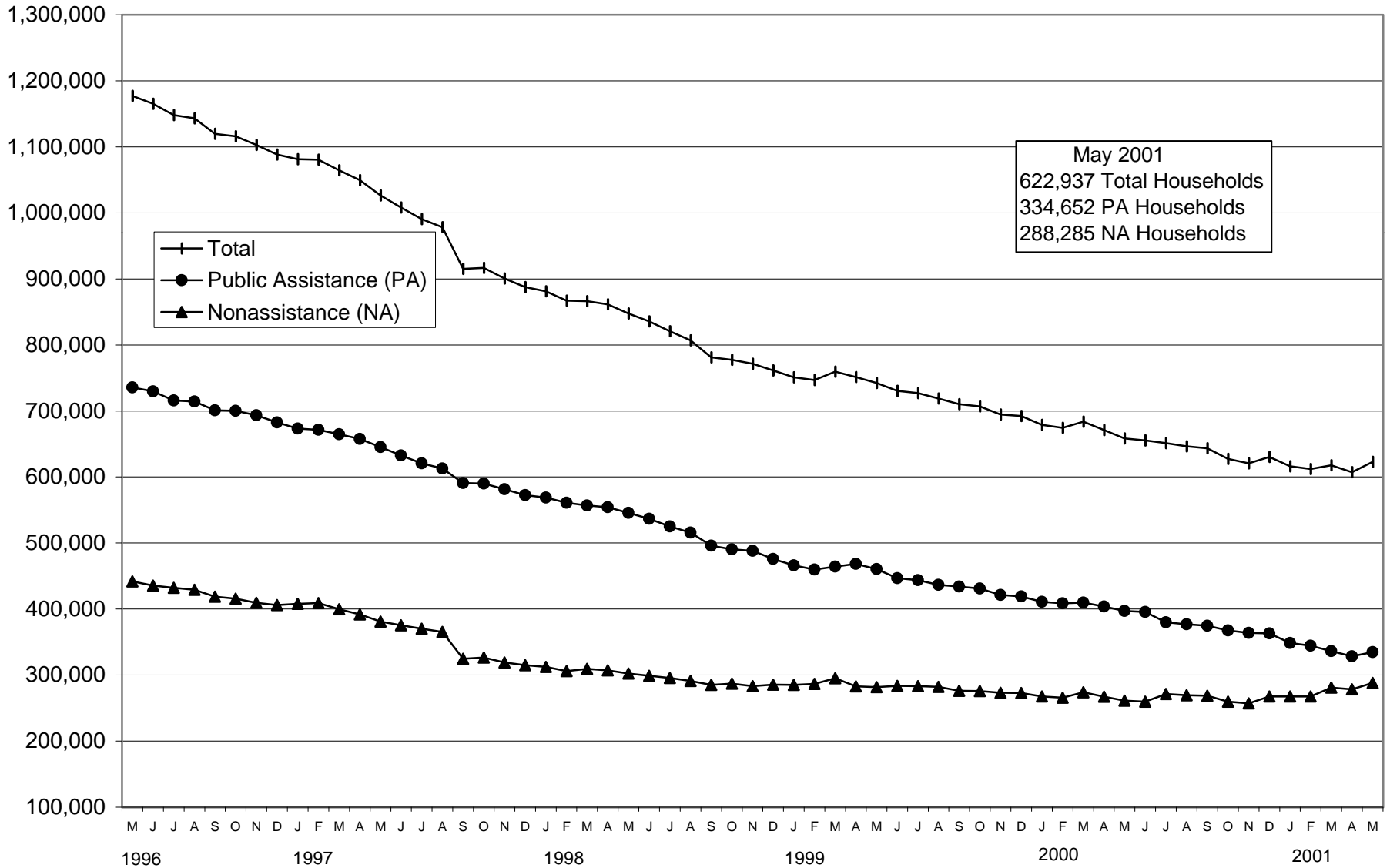


California Unemployment Rate Seasonally Adjusted May 1996 - May 2001

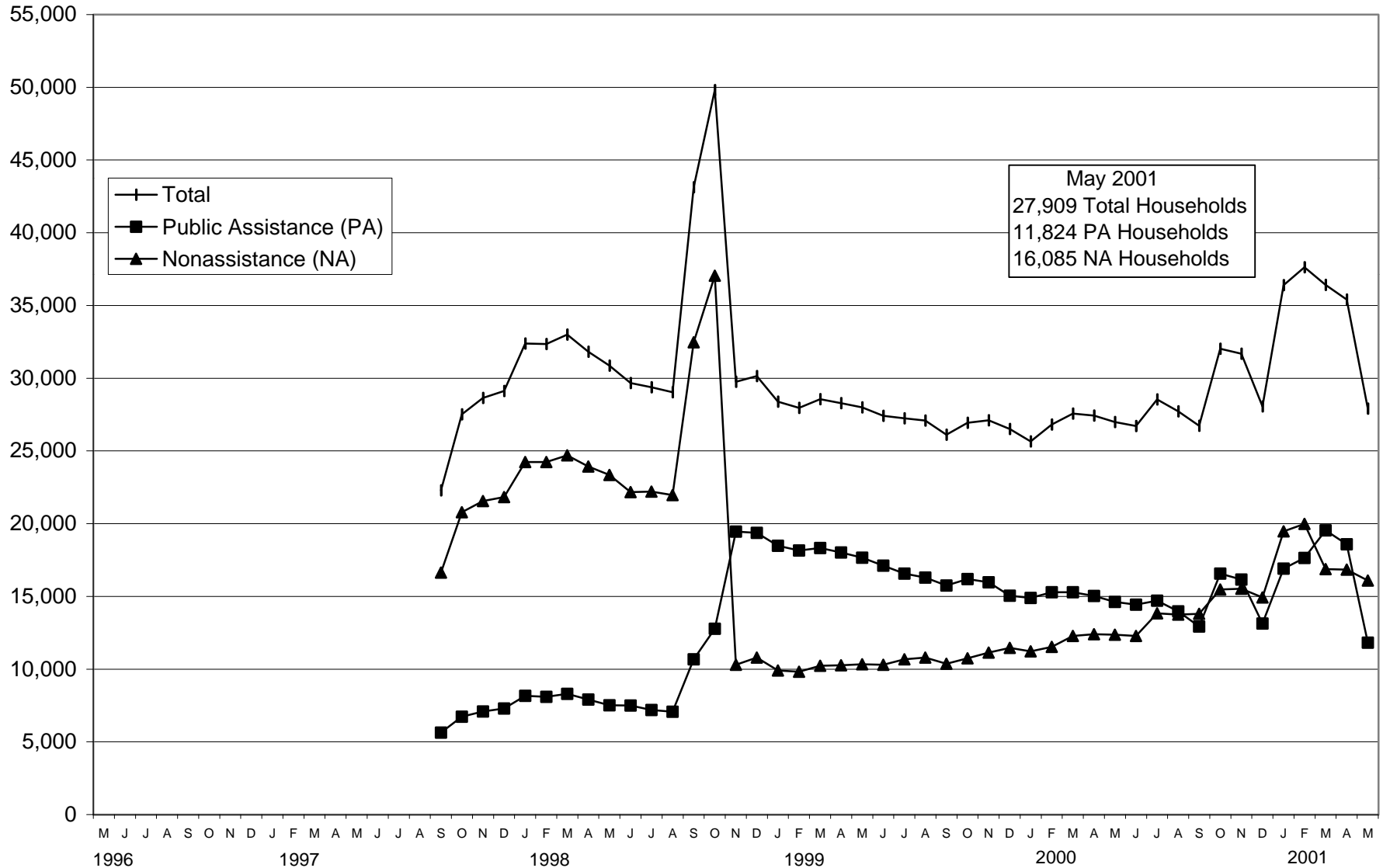
Percent



Federal Food Stamp Program Public Assistance and Nonassistance Households May 1996 - May 2001

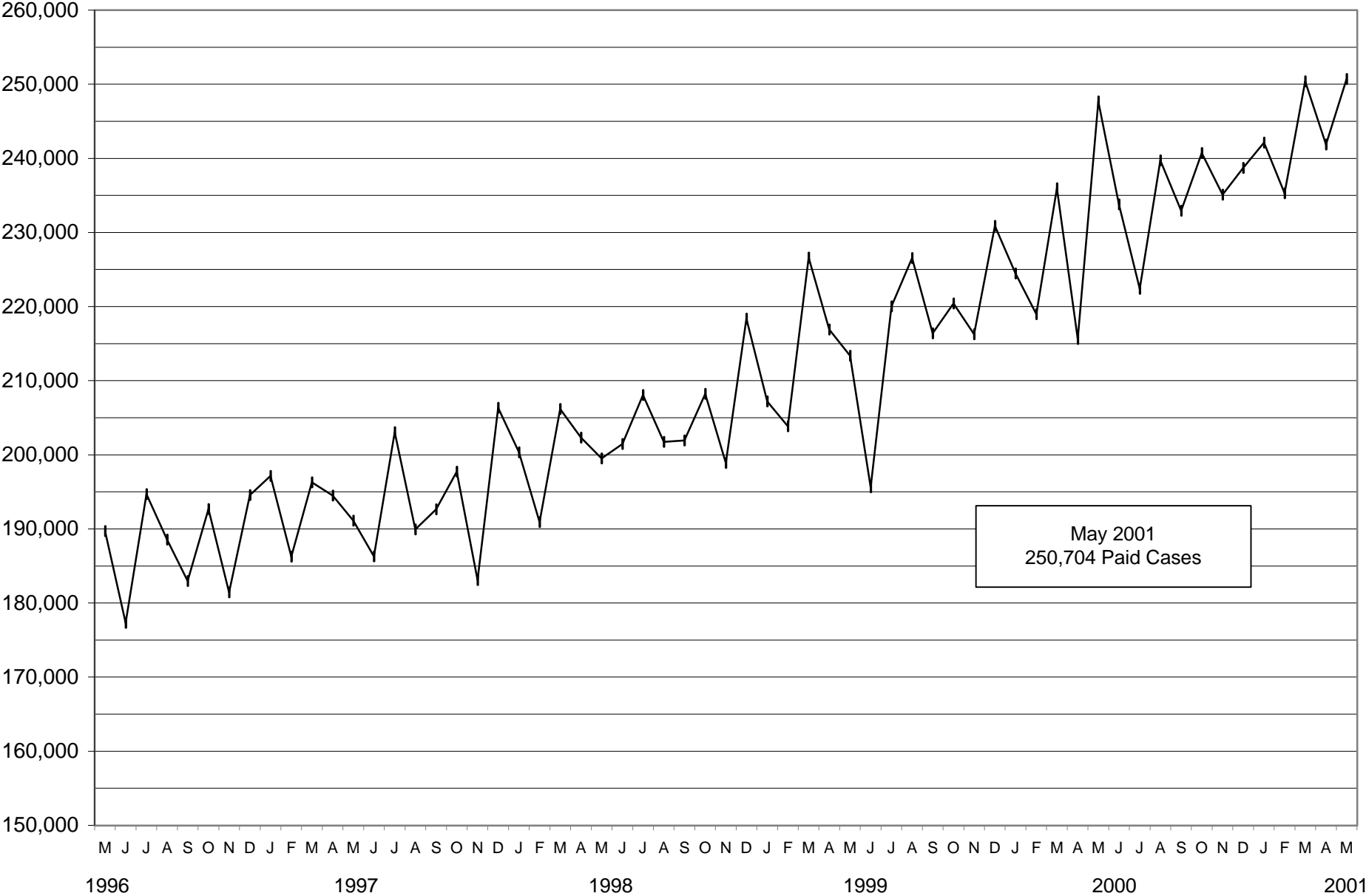


California Food Assistance Program (CFAP) Public Assistance and Nonassistance Households September 1997 - May 2001

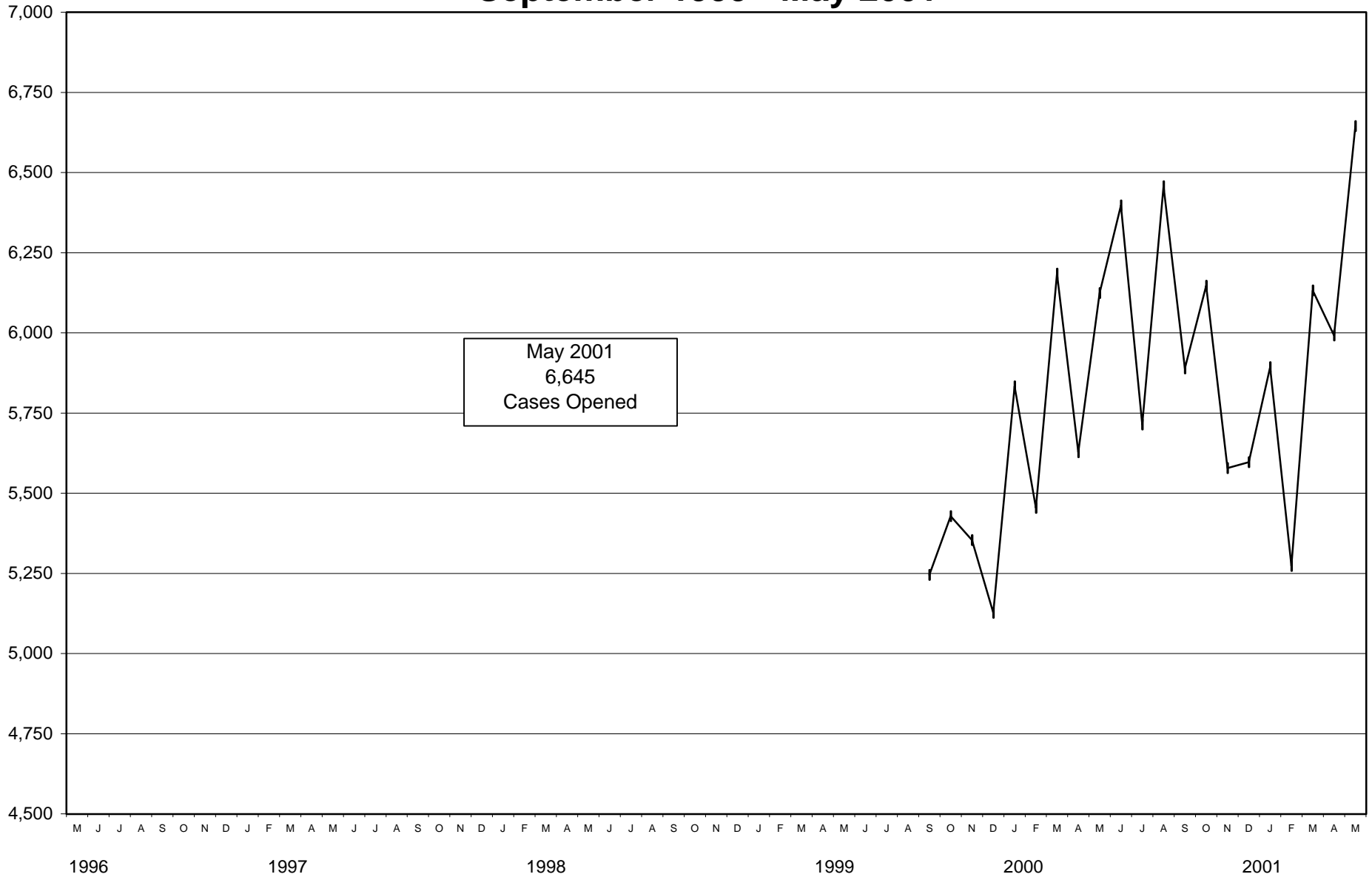


Notes: The California Food Assistance Program began September 1997.
 In September 1998, program rules changes to allow certain legal immigrants to participate; federal food stamps were restored to these immigrants in November 1998.
 September 2000 - May 2001 fluctuation due to continuing implementation of the Los Angeles County LEADER system.

In-Home Supportive Services Number of Unduplicated Paid Cases May 1996 - May 2001

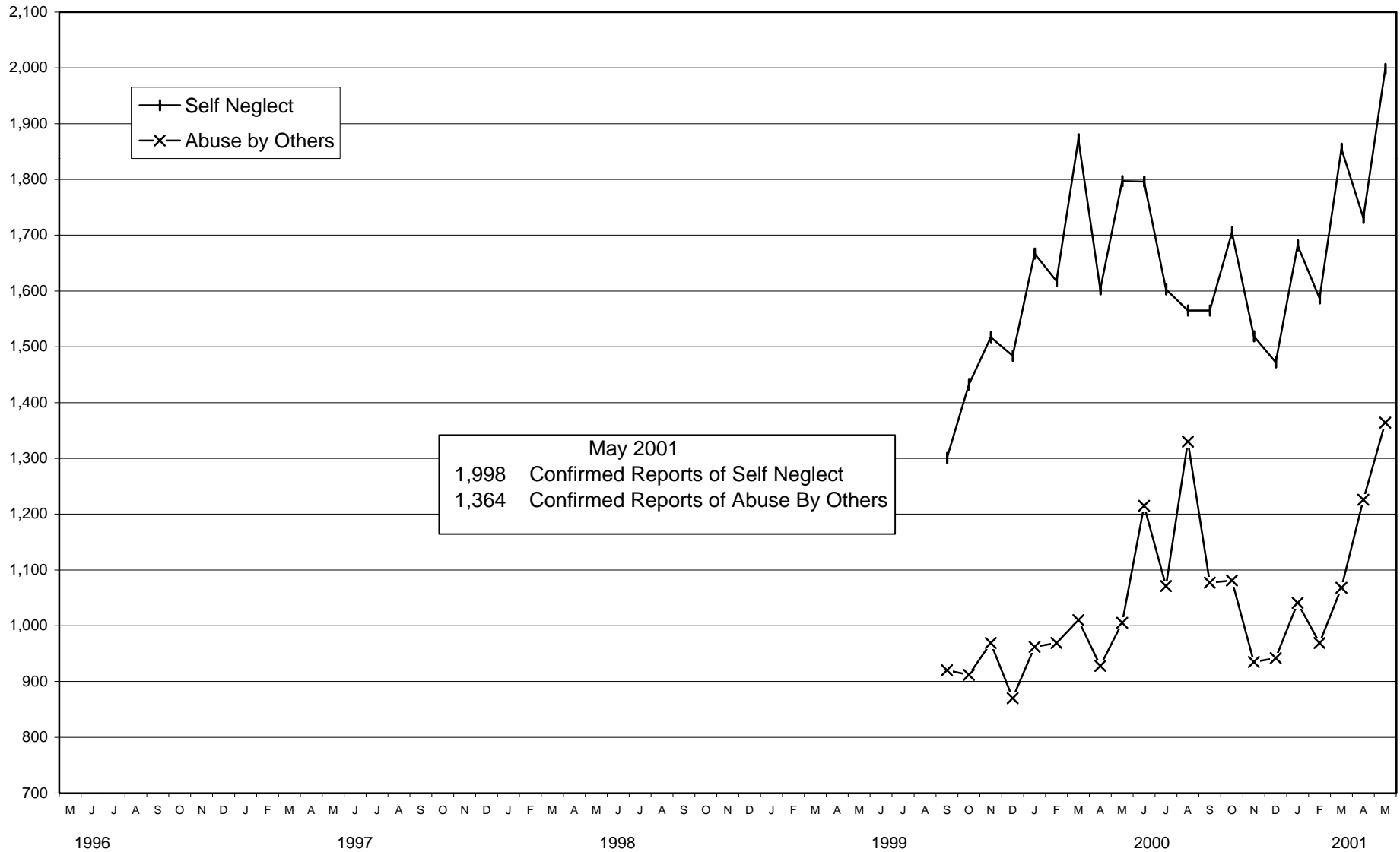


Adult Protective Services Cases Opened During the Month September 1999 - May 2001



Note: Effective with the September 1999 report month, the source form (SOC 242) was changed.

Adult Protective Services Unduplicated Count of Confirmed Reports of Self Neglect and Abuse By Others September 1999 - May 2001



Note: Effective with the September 1999 report month, the source form (SOC 242) was changed.