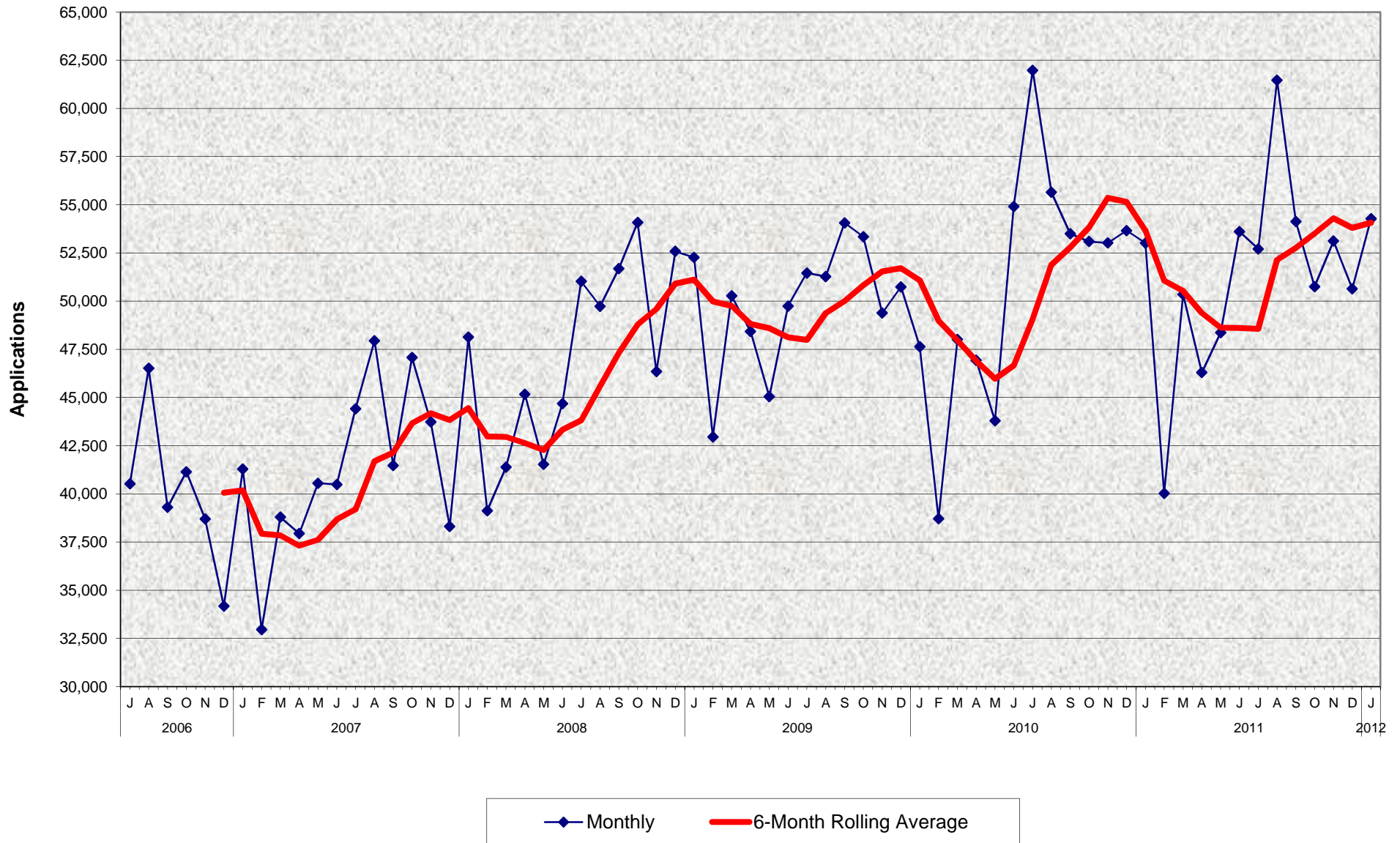


CalWORKs Program Applications Received July 2006 - January 2012



CalWORKs Program Applications Received July 2006 - January 2012

MONTHLY PERCENT CHANGE

FY	Jul	% Chg	Aug	% Chg	Sep	% Chg	Oct	% Chg	Nov	% Chg	Dec	% Chg	Jan	% Chg	Feb	% Chg	Mar	% Chg	Apr	% Chg	May	% Chg	Jun	% Chg
06/07	40,518	1.3%	46,516	14.8%	39,303	-15.5%	41,149	4.7%	38,694	-6.0%	34,175	-11.7%	41,284	20.8%	32,962	-20.2%	38,794	17.7%	37,942	-2.2%	40,552	6.9%	40,487	-0.2%
07/08	44,418	9.7%	47,947	7.9%	41,477	-13.5%	47,076	13.5%	43,731	-7.1%	38,312	-12.4%	48,132	25.6%	39,129	-18.7%	41,384	5.8%	45,166	9.1%	41,528	-8.1%	44,686	7.6%
08/09	51,026	14.2%	49,733	-2.5%	51,692	3.9%	54,078	4.6%	46,345	-14.3%	52,585	13.5%	52,270	-0.6%	42,961	-17.8%	50,277	17.0%	48,433	-3.7%	45,047	-7.0%	49,744	10.4%
09/10	51,457	3.4%	51,278	-0.3%	54,060	5.4%	53,345	-1.3%	49,385	-7.4%	50,740	2.7%	47,643	-6.1%	38,715	-18.7%	48,013	24.0%	46,936	-2.2%	43,800	-6.7%	54,915	25.4%
10/11	61,981	12.9%	55,646	-10.2%	53,502	-3.9%	53,095	-0.8%	53,024	-0.1%	53,660	1.2%	53,017	-1.2%	40,019	-24.5%	50,348	25.8%	46,298	-8.0%	48,362	4.5%	53,612	10.9%
11/12	52,714	-1.7%	61,462	16.6%	54,136	-11.9%	50,753	-6.2%	53,116	4.7%	50,644	-4.7%	54,282	7.2%										

TRENDS

- The number of CalWORKs applications increased 7.2% between December 2011 and January 2012.
- The number of CalWORKs applications increased 2.4% between January 2011 and January 2012.