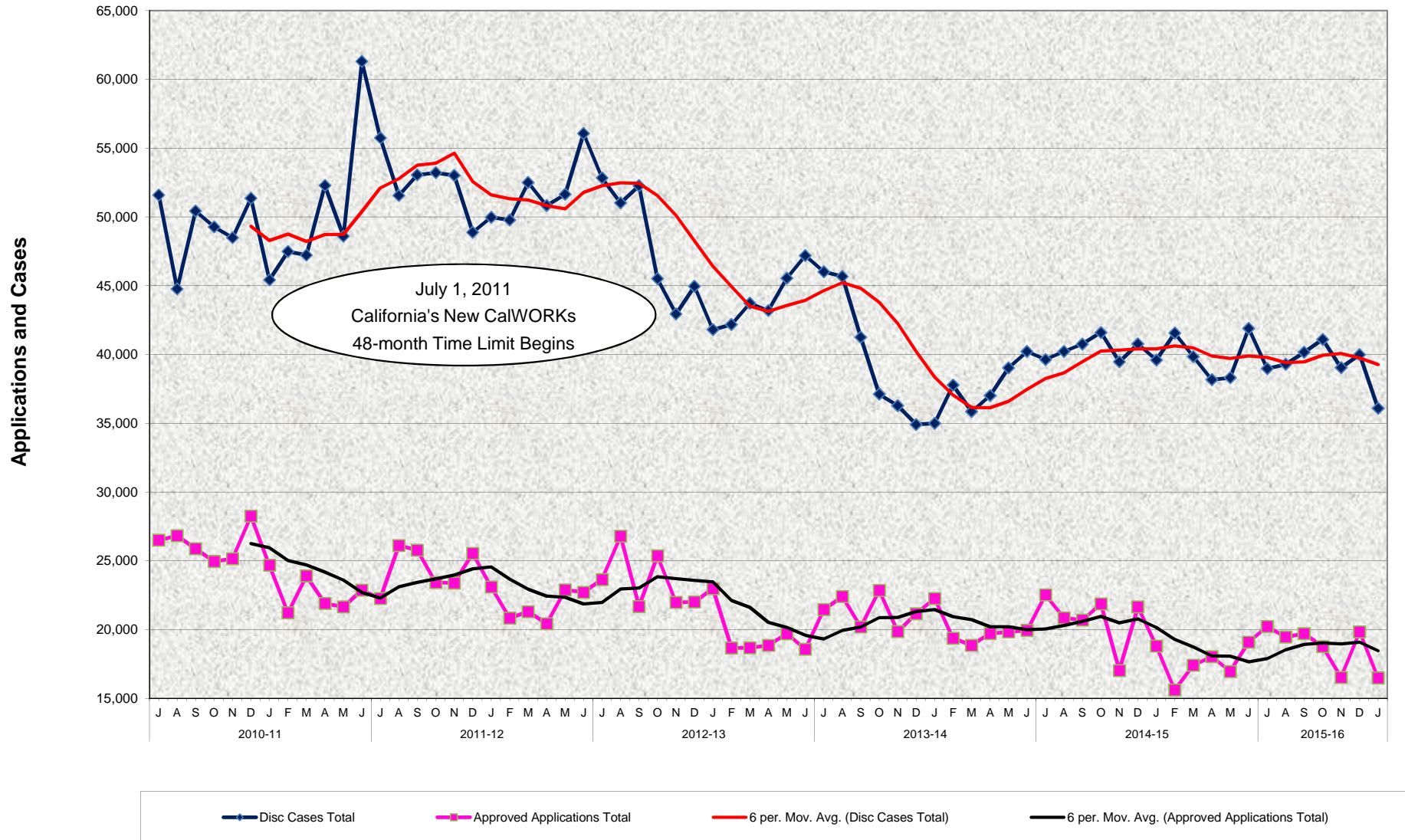


CalWORKs Program Discontinued Cases and Approved Applications July 2010 - January 2016



**CalWORKs Program
Discontinued Cases and Approved Applications
July 2010 - January 2016**

MONTHLY PERCENT CHANGE

FY		Jul	% Chg	Aug	% Chg	Sep	% Chg	Oct	% Chg	Nov	% Chg	Dec	% Chg	Jan	% Chg	Feb	% Chg	Mar	% Chg	Apr	% Chg	May	% Chg	Jun	% Chg
10/11	Discontinued	51,597		44,762	-13.2%	50,434	12.7%	49,278	-2.3%	48,494	-1.6%	51,360	5.9%	45,422	-11.6%	47,494	4.6%	47,219	-0.6%	52,286	10.7%	48,588	-7.1%	61,303	26.2%
	Approved	26,506		26,821	1.2%	25,875	-3.5%	24,947	-3.6%	25,156	0.8%	28,251	12.3%	24,690	-12.6%	21,221	-14.1%	23,903	12.6%	21,898	-8.4%	21,647	-1.1%	22,870	5.6%
11/12	Discontinued	55,748	-9.1%	51,553	-7.5%	53,047	2.9%	53,213	0.3%	53,009	-0.4%	48,873	-7.8%	49,976	2.3%	49,764	-0.4%	52,502	5.5%	50,819	-3.2%	51,637	1.6%	56,056	8.6%
	Approved	22,256	-2.7%	26,119	17.4%	25,771	-1.3%	23,421	-9.1%	23,390	-0.1%	25,536	9.2%	23,091	-9.6%	20,828	-9.8%	21,305	2.3%	20,421	-4.1%	22,884	12.1%	22,712	-0.8%
12/13	Discontinued	52,831	-5.8%	51,015	-3.4%	52,268	2.5%	45,512	-12.9%	42,943	-5.6%	44,956	4.7%	41,799	-7.0%	42,176	0.9%	43,725	3.7%	43,190	-1.2%	45,554	5.5%	47,184	3.6%
	Approved	23,640	4.1%	26,793	13.3%	21,680	-19.1%	25,362	17.0%	21,979	-13.3%	22,013	0.2%	22,982	4.4%	18,667	-18.8%	18,678	0.1%	18,858	1.0%	19,702	4.5%	18,563	-5.8%
13/14	Discontinued	46,017	-2.5%	45,674	-0.7%	41,247	-9.7%	37,106	-10.0%	36,267	-2.3%	34,909	-3.7%	34,990	0.2%	37,770	7.9%	35,842	-5.1%	37,001	3.2%	39,021	5.5%	40,209	3.0%
	Approved	21,455	15.6%	22,406	4.4%	20,184	-9.9%	22,842	13.2%	19,853	-13.1%	21,162	6.6%	22,261	5.2%	19,371	-13.0%	18,863	-2.6%	19,705	4.5%	19,839	0.7%	19,942	0.5%
14/15	Discontinued	39,635	-1.4%	40,219	1.5%	40,756	1.3%	41,596	2.1%	39,459	-5.1%	40,771	3.3%	39,599	-2.9%	41,558	4.9%	39,846	-4.1%	38,161	-4.2%	38,299	0.4%	41,887	9.4%
	Approved	22,532	13.0%	20,851	-7.5%	20,695	-0.7%	21,868	5.7%	17,027	-22.1%	21,647	27.1%	18,796	-13.2%	15,605	-17.0%	17,412	11.6%	18,033	3.6%	16,956	-6.0%	19,093	12.6%
15/16	Discontinued	38,970	-7.0%	39,282	0.8%	40,159	2.2%	41,097	2.3%	39,031	-5.0%	39,991	2.5%	36,074	-9.8%										
	Approved	20,230	6.0%	19,464	-3.8%	19,709	1.3%	18,763	-4.8%	16,525	-11.9%	19,831	20.0%	16,480	-16.9%										

TRENDS

- The number of CalWORKs discontinued cases decreased 9.8% between December 2015 and January 2016.
- The number of CalWORKs discontinued cases decreased 8.9% between January 2015 and January 2016.
- The number of CalWORKs approved applications decreased 16.9% between December 2015 and January 2016.
- The number of CalWORKs approved applications decreased 12.3% between January 2015 and January 2016.