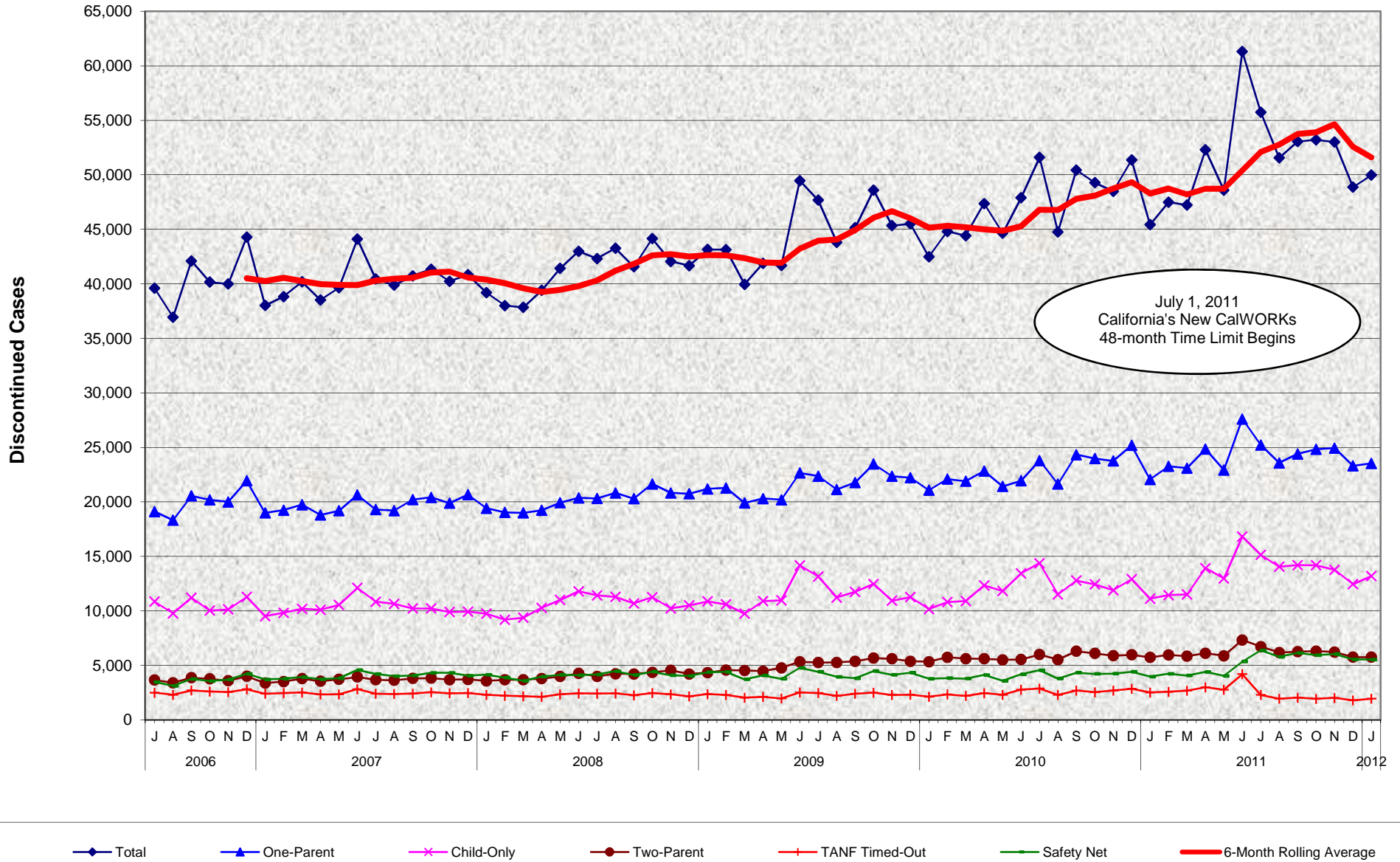


CalWORKs Program Discontinued Cases by Category July 2006 - January 2012



CalWORKs Program Discontinued Cases by Category July 2006 - January 2012

MONTHLY PERCENT CHANGE

FY		Jul	% Chg	Aug	% Chg	Sep	% Chg	Oct	% Chg	Nov	% Chg	Dec	% Chg	Jan	% Chg	Feb	% Chg	Mar	% Chg	Apr	% Chg	May	% Chg	Jun	% Chg	
06/07	Total	39,604	-5.7%	36,948	-6.7%	42,099	13.9%	40,155	-4.6%	39,990	-0.4%	44,284	10.7%	38,016	-14.2%	38,830	2.1%	40,177	3.5%	38,528	-4.1%	39,640	2.9%	44,104	11.3%	
	1P	19,116	-4.2%	18,320	-4.2%	20,554	12.2%	20,191	-1.8%	20,005	-0.9%	21,940	9.7%	18,995	-13.4%	19,240	1.3%	19,741	2.6%	18,799	-4.8%	19,191	2.1%	20,646	7.6%	
	CO	10,848	-6.9%	9,784	-9.8%	11,211	14.6%	10,023	-10.6%	10,135	1.1%	11,287	11.4%	9,522	-15.6%	9,818	3.1%	10,193	3.8%	10,104	-0.9%	10,551	4.4%	12,112	14.8%	
	2P	3,658	-6.0%	3,414	-6.7%	3,873	13.4%	3,772	-2.6%	3,598	-4.6%	4,010	11.5%	3,378	-15.8%	3,522	4.3%	3,789	7.6%	3,549	-6.3%	3,724	4.9%	3,937	5.7%	
	TO	2,504	-12.0%	2,304	-8.0%	2,701	17.2%	2,605	-3.6%	2,553	-2.0%	2,812	10.1%	2,408	-14.4%	2,469	2.5%	2,525	2.3%	2,341	-7.3%	2,352	0.5%	2,824	20.1%	
	SN	3,478	-4.7%	3,126	-10.1%	3,760	20.3%	3,564	-5.2%	3,699	3.8%	4,235	14.5%	3,713	-12.3%	3,781	1.8%	3,929	3.9%	3,735	-4.9%	3,822	2.3%	4,585	20.0%	
07/08	Total	40,440	-8.3%	39,878	-1.4%	40,737	2.2%	41,339	1.5%	40,238	-2.7%	40,834	1.5%	39,201	-4.0%	38,004	-3.1%	37,837	-0.4%	39,397	4.1%	41,416	5.1%	42,982	3.8%	
	1P	19,295	-6.5%	19,200	-0.5%	20,214	5.3%	20,412	1.0%	19,883	-2.6%	20,663	3.9%	19,418	-6.0%	19,034	-2.0%	19,001	-0.2%	19,239	1.3%	19,929	3.6%	20,374	2.2%	
	CO	10,840	-10.5%	10,644	-1.8%	10,226	-3.9%	10,225	0.0%	9,899	-3.2%	9,929	0.3%	9,743	-1.9%	9,193	-5.6%	9,379	2.0%	10,275	9.6%	11,007	7.1%	11,796	7.2%	
	2P	3,685	-6.4%	3,637	-1.3%	3,808	4.7%	3,835	0.7%	3,695	-3.7%	3,710	0.4%	3,585	-3.4%	3,684	2.8%	3,692	0.2%	3,789	2.6%	3,988	5.3%	4,264	6.9%	
	TO	2,403	-14.9%	2,381	-0.9%	2,413	1.3%	2,542	5.3%	2,446	-3.8%	2,467	0.9%	2,307	-6.5%	2,221	-3.7%	2,179	-1.9%	2,119	-2.8%	2,352	11.0%	2,440	3.7%	
	SN	4,217	-8.0%	4,016	-4.8%	4,076	1.5%	4,325	6.1%	4,315	-0.2%	4,065	-5.8%	4,148	2.0%	3,822	-6.7%	3,586	-7.4%	3,975	10.8%	4,140	4.2%	4,108	-0.8%	
08/09	Total	42,316	-1.5%	43,256	2.2%	41,571	-3.9%	44,147	6.2%	42,053	-4.7%	41,667	-0.9%	43,154	3.6%	43,135	0.0%	39,954	-7.4%	41,869	4.8%	41,679	-0.5%	49,466	18.7%	
	1P	20,316	-0.3%	20,831	2.5%	20,301	-2.5%	21,648	6.6%	20,825	-3.8%	20,755	-0.3%	21,191	2.1%	21,279	0.4%	19,909	-6.4%	20,305	2.0%	20,196	-0.5%	22,652	12.2%	
	CO	11,423	-3.2%	11,280	-1.3%	10,686	-5.3%	11,251	5.3%	10,235	-9.0%	10,500	2.6%	10,875	3.6%	10,587	-2.6%	9,741	-8.0%	10,899	11.9%	10,971	0.7%	14,173	29.2%	
	2P	3,999	-6.2%	4,231	5.8%	4,209	-0.5%	4,364	3.7%	4,549	4.2%	4,215	-7.3%	4,346	3.1%	4,571	5.2%	4,540	-0.7%	4,467	-1.6%	4,775	6.9%	5,343	11.9%	
	TO	2,415	-1.0%	2,440	1.0%	2,263	-7.3%	2,471	9.2%	2,353	-4.8%	2,161	-8.2%	2,369	9.6%	2,296	-3.1%	2,040	-11.1%	2,118	3.8%	1,972	-6.9%	2,519	27.7%	
	SN	4,163	1.3%	4,474	7.5%	4,112	-8.1%	4,413	7.3%	4,091	-7.3%	4,036	-1.3%	4,373	8.3%	4,402	0.7%	3,724	-15.4%	4,080	9.6%	3,765	-7.7%	4,779	26.9%	
09/10	Total	47,673	-3.6%	43,809	-8.1%	45,143	3.0%	48,595	7.6%	45,337	-6.7%	45,509	0.4%	42,490	-6.6%	44,810	5.5%	44,417	-0.9%	47,360	6.6%	44,642	-5.7%	47,895	7.3%	
	1P	22,361	-1.3%	21,142	-5.5%	21,782	3.0%	23,480	7.8%	22,354	-4.8%	22,222	-0.6%	21,071	-5.2%	22,090	4.8%	21,902	-0.9%	22,832	4.2%	21,419	-6.2%	21,937	2.4%	
	CO	13,159	-7.2%	11,232	-14.6%	11,755	4.7%	12,468	6.1%	10,933	-12.3%	11,268	3.1%	10,164	-9.8%	10,804	6.3%	10,902	0.9%	12,336	13.2%	11,822	-4.2%	13,444	13.7%	
	2P	5,266	-1.4%	5,271	0.1%	5,382	2.1%	5,670	5.4%	5,611	-1.0%	5,381	-4.1%	5,341	-0.7%	5,745	7.6%	5,616	-2.2%	5,612	-0.1%	5,506	-1.9%	5,540	0.6%	
	TO	2,472	-1.9%	2,211	-10.6%	2,403	8.7%	2,500	4.0%	2,298	-8.1%	2,312	0.6%	2,131	-7.8%	2,337	9.7%	2,207	-5.6%	2,460	11.5%	2,310	-6.1%	2,780	20.3%	
	SN	4,415	-7.6%	3,953	-10.5%	3,821	-3.3%	4,477	17.2%	4,141	-7.5%	4,326	4.5%	3,783	-12.6%	3,834	1.3%	3,790	-1.1%	4,120	8.7%	3,585	-13.0%	4,194	17.0%	
10/11	Total	51,597	7.7%	44,762	-13.2%	50,434	12.7%	49,278	-2.3%	48,494	-1.6%	51,360	5.9%	45,422	-11.6%	47,494	4.6%	47,219	-0.6%	52,286	10.7%	48,588	-7.1%	61,303	26.2%	
	1P	23,790	8.4%	21,636	-9.1%	24,333	12.5%	23,975	-1.5%	23,762	-0.9%	25,194	6.0%	22,058	-12.4%	23,259	5.4%	23,104	-0.7%	24,840	7.5%	22,931	-7.7%	27,604	20.4%	
	CO	14,373	6.9%	11,515	-19.9%	12,778	11.0%	12,435	-2.7%	11,904	-4.3%	12,912	8.5%	11,124	-13.8%	11,446	2.9%	11,513	0.6%	13,917	20.9%	12,976	-6.8%	16,816	29.6%	
	2P	5,998	8.3%	5,535	-7.7%	6,298	13.8%	6,106	-3.0%	5,887	-3.6%	5,982	1.6%	5,743	-4.0%	5,968	3.9%	5,843	-2.1%	6,123	4.8%	5,875	-4.1%	7,333	24.8%	
	TO	2,880	3.6%	2,290	-20.5%	2,698	17.8%	2,541	-5.8%	2,693	6.0%	2,854	6.0%	2,520	-11.7%	2,587	2.7%	2,687	3.9%	2,997	11.5%	2,768	-7.6%	4,202	51.8%	
	SN	4,556	8.6%	3,786	-16.9%	4,327	14.3%	4,221	-2.4%	4,248	0.6%	4,418	4.0%	3,977	-10.0%	4,234	6.5%	4,072	-3.8%	4,409	8.3%	4,038	-8.4%	5,348	32.4%	
11/12	Total	55,748	-9.1%	51,553	-7.5%	53,047	2.9%	53,213	0.3%	53,008	-0.4%	48,873	-7.8%	49,976	2.3%											
	1P	25,228	-8.6%	23,578	-6.5%	24,400	3.5%	24,825	1.7%	24,943	0.5%	23,311	-6.5%	23,539	1.0%											
	CO	15,136	-10.0%	14,055	-7.1%	14,199	1.0%	14,192	0.0%	13,768	-3.0%	12,457	-9.5%	13,192	5.9%											
	2P	6,719	-8.4%	6,184	-8.0%	6,259	1.2%	6,314	0.9%	6,228	-1.4%	5,756	-7.6%	5,761	0.1%											
	TO	2,292	-45.5%	1,945	-15.1%	2,049	5.3%	1,941	-5.3%	2,023	4.2%	1,797	-11.2%	1,952	8.6%											
	SN	6,373	19.2%	5,791	-9.1%	6,140	6.0%	5,941	-3.2%	6,046	1.8%	5,552	-8.2%	5,532	-0.4%											

TRENDS

- The number of CalWORKs discontinued cases increased 2.3% between December 2011 and January 2012.
- The number of CalWORKs discontinued cases increased 10% between January 2011 and January 2012.