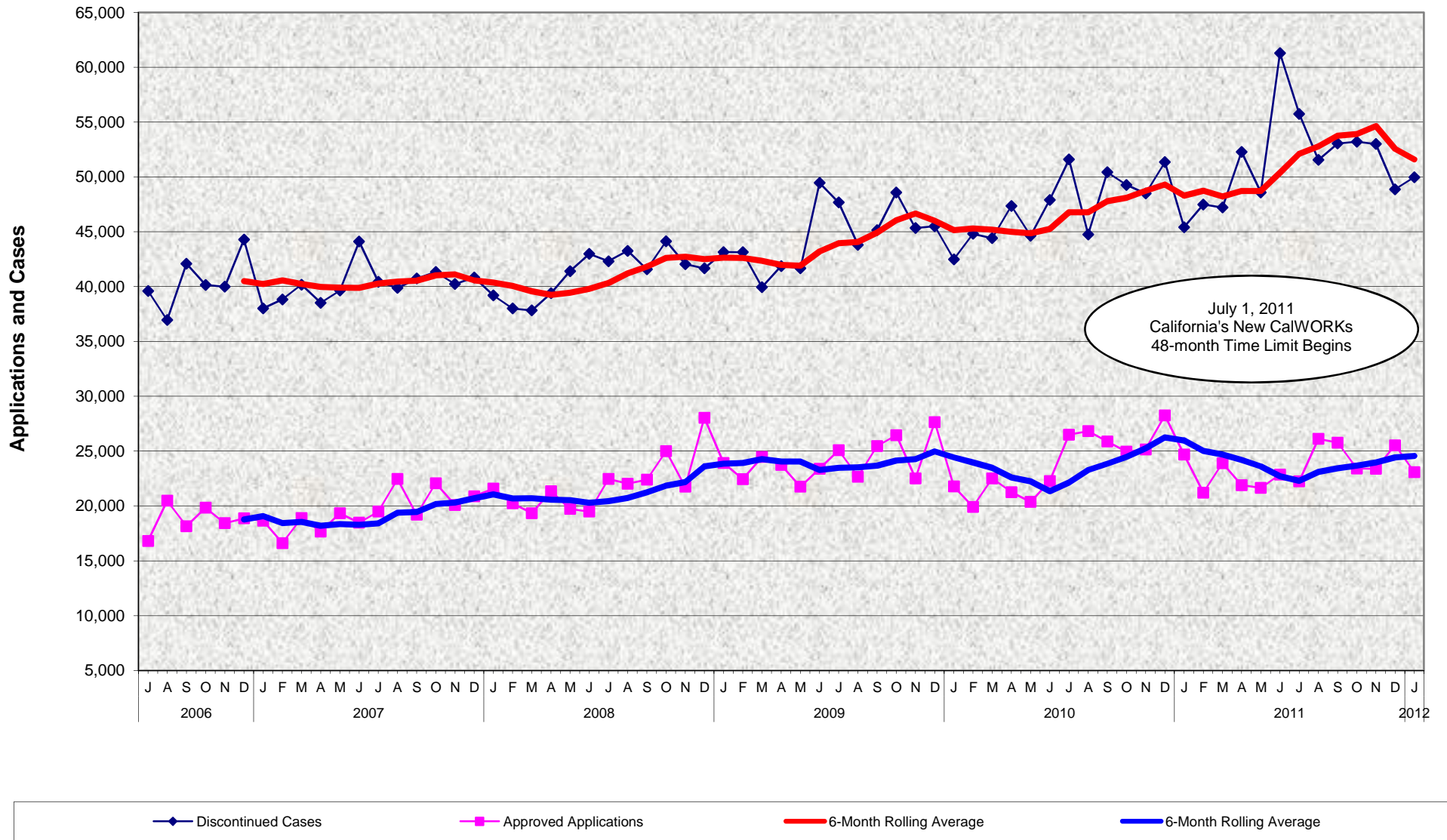


CalWORKs Program Discontinued Cases and Approved Applications July 2006 - January 2012



CalWORKs Program Discontinued Cases and Approved Applications July 2006 - January 2012

MONTHLY PERCENT CHANGE

FY		Jul	% Chg	Aug	% Chg	Sep	% Chg	Oct	% Chg	Nov	% Chg	Dec	% Chg	Jan	% Chg	Feb	% Chg	Mar	% Chg	Apr	% Chg	May	% Chg	Jun	% Chg
06/07	Discontinued	39,604	-5.7%	36,948	-6.7%	42,099	13.9%	40,155	-4.6%	39,990	-0.4%	44,284	10.7%	38,016	-14.2%	38,830	2.1%	40,177	3.5%	38,528	-4.1%	39,640	2.9%	44,104	11.3%
	Approved	16,812	-6.7%	20,478	21.8%	18,152	-11.4%	19,836	9.3%	18,431	-7.1%	18,874	2.4%	18,647	-1.2%	16,618	-10.9%	18,895	13.7%	17,670	-6.5%	19,328	9.4%	18,479	-4.4%
07/08	Discontinued	40,440	-8.3%	39,878	-1.4%	40,737	2.2%	41,339	1.5%	40,238	-2.7%	40,834	1.5%	39,201	-4.0%	38,004	-3.1%	37,837	-0.4%	39,397	4.1%	41,416	5.1%	42,982	3.8%
	Approved	19,483	5.4%	22,461	15.3%	19,217	-14.4%	22,072	14.9%	20,081	-9.0%	20,885	4.0%	21,585	3.4%	20,238	-6.2%	19,340	-4.4%	21,343	10.4%	19,729	-7.6%	19,491	-1.2%
08/09	Discontinued	42,316	-1.5%	43,256	2.2%	41,571	-3.9%	44,147	6.2%	42,053	-4.7%	41,667	-0.9%	43,154	3.6%	43,135	0.0%	39,954	-7.4%	41,869	4.8%	41,679	-0.5%	49,466	18.7%
	Approved	22,466	15.3%	22,034	-1.9%	22,390	1.6%	25,000	11.7%	21,755	-13.0%	28,047	28.9%	23,915	-14.7%	22,450	-6.1%	24,464	9.0%	23,740	-3.0%	21,753	-8.4%	23,400	7.6%
09/10	Discontinued	47,673	-3.6%	43,809	-8.1%	45,143	3.0%	48,595	7.6%	45,337	-6.7%	45,509	0.4%	42,490	-6.6%	44,810	5.5%	44,417	-0.9%	47,360	6.6%	44,642	-5.7%	47,895	7.3%
	Approved	25,086	7.2%	22,672	-9.6%	25,454	12.3%	26,455	3.9%	22,518	-14.9%	27,643	22.8%	21,778	-21.2%	19,917	-8.5%	22,515	13.0%	21,258	-5.6%	20,368	-4.2%	22,258	9.3%
10/11	Discontinued	51,597	7.7%	44,762	-13.2%	50,434	12.7%	49,278	-2.3%	48,494	-1.6%	51,360	5.9%	45,422	-11.6%	47,494	4.6%	47,219	-0.6%	52,286	10.7%	48,588	-7.1%	61,303	26.2%
	Approved	26,506	19.1%	26,821	1.2%	25,875	-3.5%	24,947	-3.6%	25,156	0.8%	28,251	12.3%	24,690	-12.6%	21,221	-14.1%	23,903	12.6%	21,898	-8.4%	21,647	-1.1%	22,870	5.6%
11/12	Discontinued	55,748	-9.1%	51,553	-7.5%	53,047	2.9%	53,213	0.3%	53,008	-0.4%	48,873	-7.8%	49,976	2.3%										
	Approved	22,256	-2.7%	26,119	17.4%	25,771	-1.3%	23,421	-9.1%	23,390	-0.1%	25,536	9.2%	23,091	-9.6%										

TRENDS

- The number of CalWORKs discontinued cases increased 2.3% between December 2011 and January 2012.
- The number of CalWORKs discontinued cases increased 10% between January 2011 and January 2012.
- The number of CalWORKs approved applications decreased 9.6% between December 2011 and January 2012.
- The number of CalWORKs approved applications decreased 6.5% between January 2011 and January 2012.