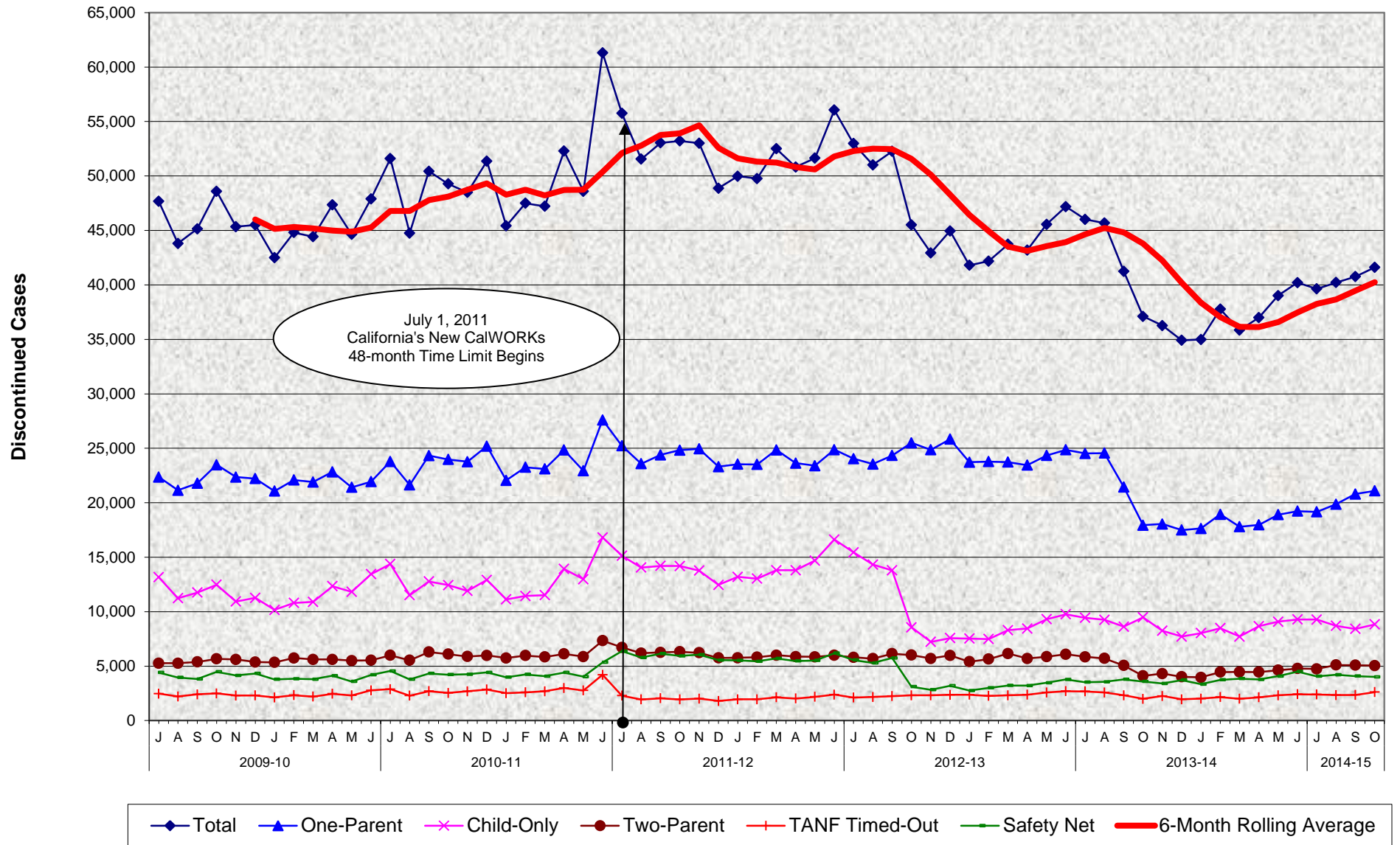


CalWORKs Program Discontinued Cases by Category July 2009 - October 2014



**CalWORKs Program
Discontinued Cases by Category
July 2009 - October 2014**

MONTHLY PERCENT CHANGE

FY		Jul	% Chg	Aug	% Chg	Sep	% Chg	Oct	% Chg	Nov	% Chg	Dec	% Chg	Jan	% Chg	Feb	% Chg	Mar	% Chg	Apr	% Chg	May	% Chg	Jun	% Chg
09/10	Total	47,673		43,809	-8.1%	45,143	3.0%	48,595	7.6%	45,337	-6.7%	45,509	0.4%	42,490	-6.6%	44,810	5.5%	44,417	-0.9%	47,360	6.6%	44,642	-5.7%	47,895	7.3%
	1P	22,361		21,142	-5.5%	21,782	3.0%	23,480	7.8%	22,354	-4.8%	22,222	-0.6%	21,071	-5.2%	22,090	4.8%	21,902	-0.9%	22,832	4.2%	21,419	-6.2%	21,937	2.4%
	CO	13,159		11,232	-14.6%	11,755	4.7%	12,468	6.1%	10,933	-12.3%	11,268	3.1%	10,164	-9.8%	10,804	6.3%	10,902	0.9%	12,336	13.2%	11,822	-4.2%	13,444	13.7%
	2P	5,266		5,271	0.1%	5,382	2.1%	5,670	5.4%	5,611	-1.0%	5,381	-4.1%	5,341	-0.7%	5,745	7.6%	5,616	-2.2%	5,612	-0.1%	5,506	-1.9%	5,540	0.6%
	TO	2,472		2,211	-10.6%	2,403	8.7%	2,500	4.0%	2,298	-8.1%	2,312	0.6%	2,131	-7.8%	2,337	9.7%	2,207	-5.6%	2,460	11.5%	2,310	-6.1%	2,780	20.3%
	SN	4,415		3,953	-10.5%	3,821	-3.3%	4,477	17.2%	4,141	-7.5%	4,326	4.5%	3,783	-12.6%	3,834	1.3%	3,790	-1.1%	4,120	8.7%	3,585	-13.0%	4,194	17.0%
10/11	Total	51,597	7.7%	44,762	-13.2%	50,434	12.7%	49,278	-2.3%	48,494	-1.6%	51,360	5.9%	45,422	-11.6%	47,494	4.6%	47,219	-0.6%	52,286	10.7%	48,588	-7.1%	61,303	26.2%
	1P	23,790	8.4%	21,636	-9.1%	24,333	12.5%	23,975	-1.5%	23,762	-0.9%	25,194	6.0%	22,058	-12.4%	23,259	5.4%	23,104	-0.7%	24,840	7.5%	22,931	-7.7%	27,604	20.4%
	CO	14,373	6.9%	11,515	-19.9%	12,778	11.0%	12,435	-2.7%	11,904	-4.3%	12,912	8.5%	11,124	-13.8%	11,446	2.9%	11,513	0.6%	13,917	20.9%	12,976	-6.8%	16,816	29.6%
	2P	5,998	8.3%	5,535	-7.7%	6,298	13.8%	6,106	-3.0%	5,887	-3.6%	5,982	1.6%	5,743	-4.0%	5,968	3.9%	5,843	-2.1%	6,123	4.8%	5,875	-4.1%	7,333	24.8%
	TO	2,880	3.6%	2,290	-20.5%	2,698	17.8%	2,541	-5.8%	2,693	6.0%	2,854	6.0%	2,520	-11.7%	2,587	2.7%	2,687	3.9%	2,997	11.5%	2,768	-7.6%	4,202	51.8%
	SN	4,556	8.6%	3,786	-16.9%	4,327	14.3%	4,221	-2.4%	4,248	0.6%	4,418	4.0%	3,977	-10.0%	4,234	6.5%	4,072	-3.8%	4,409	8.3%	4,038	-8.4%	5,348	32.4%
11/12	Total	55,748	-9.1%	51,553	-7.5%	53,047	2.9%	53,213	0.3%	53,008	-0.4%	48,873	-7.8%	49,976	2.3%	49,764	-0.4%	52,502	5.5%	50,819	-3.2%	51,637	1.6%	56,056	8.6%
	1P	25,228	-8.6%	23,578	-6.5%	24,400	3.5%	24,825	1.7%	24,943	0.5%	23,311	-6.5%	23,539	1.0%	23,522	-0.1%	24,854	5.7%	23,641	-4.9%	23,401	-1.0%	24,868	6.3%
	CO	15,136	-10.0%	14,055	-7.1%	14,199	1.0%	14,192	0.0%	13,768	-3.0%	12,457	-9.5%	13,192	5.9%	13,036	-1.2%	13,806	5.9%	13,802	0.0%	14,686	6.4%	16,621	13.2%
	2P	6,719	-8.4%	6,184	-8.0%	6,259	1.2%	6,314	0.9%	6,228	-1.4%	5,756	-7.6%	5,761	0.1%	5,816	1.0%	6,007	3.3%	5,878	-2.1%	5,851	-0.5%	5,989	2.4%
	TO	2,292	-45.5%	1,945	-15.1%	2,049	5.3%	1,941	-5.3%	2,023	4.2%	1,797	-11.2%	1,952	8.6%	1,950	-0.1%	2,136	9.5%	2,025	-5.2%	2,183	7.8%	2,391	9.5%
	SN	6,373	19.2%	5,791	-9.1%	6,140	6.0%	5,941	-3.2%	6,046	1.8%	5,552	-8.2%	5,532	-0.4%	5,440	-1.7%	5,699	4.8%	5,473	-4.0%	5,516	0.8%	6,187	12.2%
12/13	Total	52,975	-5.5%	51,015	-3.7%	52,268	2.5%	45,512	-12.9%	42,943	-5.6%	44,956	4.7%	41,799	-7.0%	42,176	0.9%	43,725	3.7%	43,190	-1.2%	45,554	5.5%	47,184	3.6%
	1P	24,048	-3.3%	23,551	-2.1%	24,341	3.4%	25,500	4.8%	24,865	-2.5%	25,837	3.9%	23,724	-8.2%	23,774	0.2%	23,733	-0.2%	23,450	-1.2%	24,340	3.8%	24,856	2.1%
	CO	15,446	-7.1%	14,317	-7.3%	13,787	-3.7%	8,559	-37.9%	7,224	-15.6%	7,570	4.8%	7,534	-0.5%	7,484	-0.7%	8,298	10.9%	8,457	1.9%	9,311	10.1%	9,766	4.9%
	2P	5,804	-3.1%	5,689	-2.0%	6,144	8.0%	6,017	-2.1%	5,706	-5.2%	5,985	4.9%	5,406	-9.7%	5,646	4.4%	6,153	9.0%	5,697	-7.4%	5,860	2.9%	6,094	4.0%
	TO	2,116	-11.5%	2,174	2.7%	2,248	3.4%	2,324	3.4%	2,320	-0.2%	2,369	2.1%	2,376	0.3%	2,264	-4.7%	2,319	2.4%	2,371	2.2%	2,577	8.7%	2,700	4.8%
	SN	5,561	-10.1%	5,284	-5.0%	5,748	8.8%	3,112	-45.9%	2,828	-9.1%	3,195	13.0%	2,759	-13.6%	3,008	9.0%	3,222	7.1%	3,215	-0.2%	3,466	7.8%	3,768	8.7%
13/14	Total	46,017	-2.5%	45,674	-0.7%	41,247	-9.7%	37,106	-10.0%	36,267	-2.3%	34,909	-3.7%	34,990	0.2%	37,770	7.9%	35,842	-5.1%	37,001	3.2%	39,021	5.5%	40,209	3.0%
	1P	24,524	-1.3%	24,559	0.1%	21,454	-12.6%	17,941	-16.4%	18,051	0.6%	17,500	-3.1%	17,640	0.8%	18,935	7.3%	17,804	-6.0%	17,976	1.0%	18,904	5.2%	19,224	1.7%
	CO	9,435	-3.4%	9,258	-1.9%	8,624	-6.8%	9,480	9.9%	8,242	-13.1%	7,713	-6.4%	8,027	4.1%	8,482	5.7%	7,710	-9.1%	8,667	12.4%	9,082	4.8%	9,289	2.3%
	2P	5,855	-3.9%	5,713	-2.4%	5,059	-11.4%	4,104	-18.9%	4,310	5.0%	4,022	-6.7%	3,971	-1.3%	4,450	12.1%	4,468	0.4%	4,450	-0.4%	4,629	4.0%	4,777	3.2%
	TO	2,678	-0.8%	2,586	-3.4%	2,321	-10.2%	1,992	-14.2%	2,254	13.2%	1,956	-13.2%	2,017	3.1%	2,163	7.2%	2,010	-7.1%	2,133	6.1%	2,326	9.0%	2,423	4.2%
	SN	3,525	-6.4%	3,558	0.9%	3,789	6.5%	3,589	-5.3%	3,410	-5.0%	3,718	9.0%	3,335	-10.3%	3,740	12.1%	3,850	2.9%	3,775	-1.9%	4,080	8.1%	4,496	10.2%
14/15	Total	39,638	-1.4%	40,223	1.5%	40,756	1.3%	41,606	2.1%																
	1P	19,159	-0.3%	19,867	3.7%	20,802	4.7%	21,097	1.4%																
	CO	9,278	-0.1%	8,704	-6.2%	8,423	-3.2%	8,835	4.9%																
	2P	4,743	-0.7%	5,110	7.7%	5,083	-0.5%	5,053	-0.6%																
	TO	2,396	-1.1%	2,341	-2.3%	2,356	0.6%	2,612	10.9%																
	SN	4,062	-9.7%	4,201	3.4%	4,092	-2.6%	4,009	-2.0%																

TRENDS

The number of discontinuances increased 2.1% between September 2014 and October 2014

The number of discontinuances increased 12.1% between October 2013 and October 2014