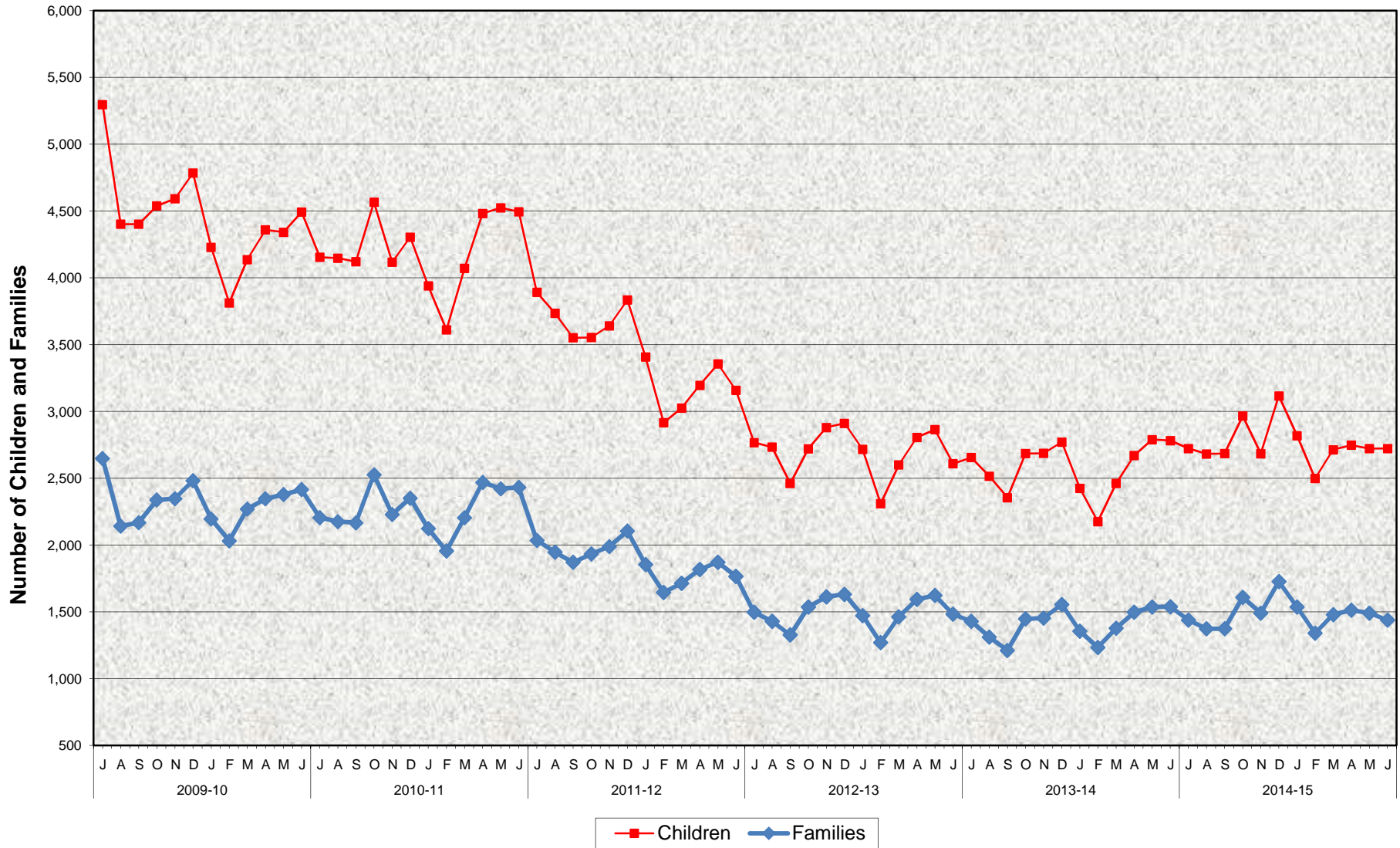


### Stage 1 Child Care - CalWORKs Two-Parent Families Number of Children and Families with Child Care Payments Made July 2009 - June 2015



**Stage 1 Child Care - CalWORKs Two-Parent Families  
Number of Children and Families with Child Care Payments Made  
July 2009 - June 2015**

**MONTHLY PERCENT CHANGE**

FY		Jul	% Chg	Aug	% Chg	Sep	% Chg	Oct	% Chg	Nov	% Chg	Dec	% Chg	Jan	% Chg	Feb	% Chg	Mar	% Chg	Apr	% Chg	May	% Chg	Jun	% Chg
09/10	Children	5,296		4,401	-16.9%	4,401	0.0%	4,538	3.1%	4,591	1.2%	4,783	4.2%	4,227	-11.6%	3,812	-9.8%	4,136	8.5%	4,359	5.4%	4,341	-0.4%	4,491	3.5%
	Families	2,648		2,142	-19.1%	2,169	1.3%	2,338	7.8%	2,348	0.4%	2,483	5.7%	2,195	-11.6%	2,032	-7.4%	2,270	11.7%	2,347	3.4%	2,378	1.3%	2,415	1.6%
10/11	Children	4,154	-7.5%	4,147	-0.2%	4,120	-0.7%	4,565	10.8%	4,117	-9.8%	4,304	4.5%	3,939	-8.5%	3,610	-8.4%	4,070	12.7%	4,480	10.1%	4,524	1.0%	4,493	-0.7%
	Families	2,205	-8.7%	2,176	-1.3%	2,167	-0.4%	2,527	16.6%	2,230	-11.8%	2,351	5.4%	2,123	-9.7%	1,955	-7.9%	2,206	12.8%	2,469	11.9%	2,422	-1.9%	2,432	0.4%
11/12	Children	3,891	-13.4%	3,734	-4.0%	3,551	-4.9%	3,553	0.1%	3,641	2.5%	3,834	5.3%	3,408	-11.1%	2,916	-14.4%	3,026	3.8%	3,196	5.6%	3,356	5.0%	3,158	-8.9%
	Families	2,036	-16.3%	1,946	-4.4%	1,870	-3.9%	1,933	3.4%	1,989	2.9%	2,105	5.8%	1,854	-11.9%	1,646	-11.2%	1,714	4.1%	1,817	6.0%	1,871	3.0%	1,765	-8.7%
12/13	Children	2,767	-12.4%	2,733	-1.2%	2,461	-10.0%	2,721	10.6%	2,880	5.8%	2,911	1.1%	2,716	-6.7%	2,310	-14.9%	2,601	12.6%	2,806	7.9%	2,864	2.1%	2,609	-8.9%
	Families	1,497	-15.2%	1,430	-4.5%	1,327	-7.2%	1,537	15.8%	1,612	4.9%	1,631	1.2%	1,472	-9.7%	1,270	-13.7%	1,463	15.2%	1,593	8.9%	1,624	1.9%	1,482	-8.7%
13/14	Children	2,655	1.8%	2,516	-5.2%	2,355	-6.4%	2,685	14.0%	2,687	0.1%	2,771	3.1%	2,425	-12.5%	2,176	-10.3%	2,461	13.1%	2,670	8.5%	2,789	4.5%	2,782	-0.3%
	Families	1,430	-3.5%	1,311	-8.3%	1,211	-7.6%	1,447	19.5%	1,454	0.5%	1,555	6.9%	1,356	-12.8%	1,234	-9.0%	1,377	11.6%	1,497	8.7%	1,537	2.7%	1,538	0.1%
14/15	Children	2,723	-2.1%	2,682	-1.5%	2,685	0.1%	2,966	10.5%	2,684	-9.5%	3,116	16.1%	2,819	-9.5%	2,498	-11.4%	2,714	8.6%	2,748	1.3%	2,748	1.3%	2,723	0.0%
	Families	1,439	-6.4%	1,373	-4.6%	1,374	0.1%	1,609	17.1%	1,491	-7.3%	1,727	15.8%	1,536	-11.1%	1,341	-12.7%	1,480	10.4%	1,513	2.2%	1,513	2.2%	1,439	-3.4%

**TRENDS**

- **The number of children with child care payments made decreased 1.5% between May 2015 and June 2015**  
Children payments increased 6.6% between June 2014 and June 2015
- **The number of families with child care payments made decreased 4.6% between May 2015 and June 2015**  
Family payments increased 4.7% between June 2014 and June 2015