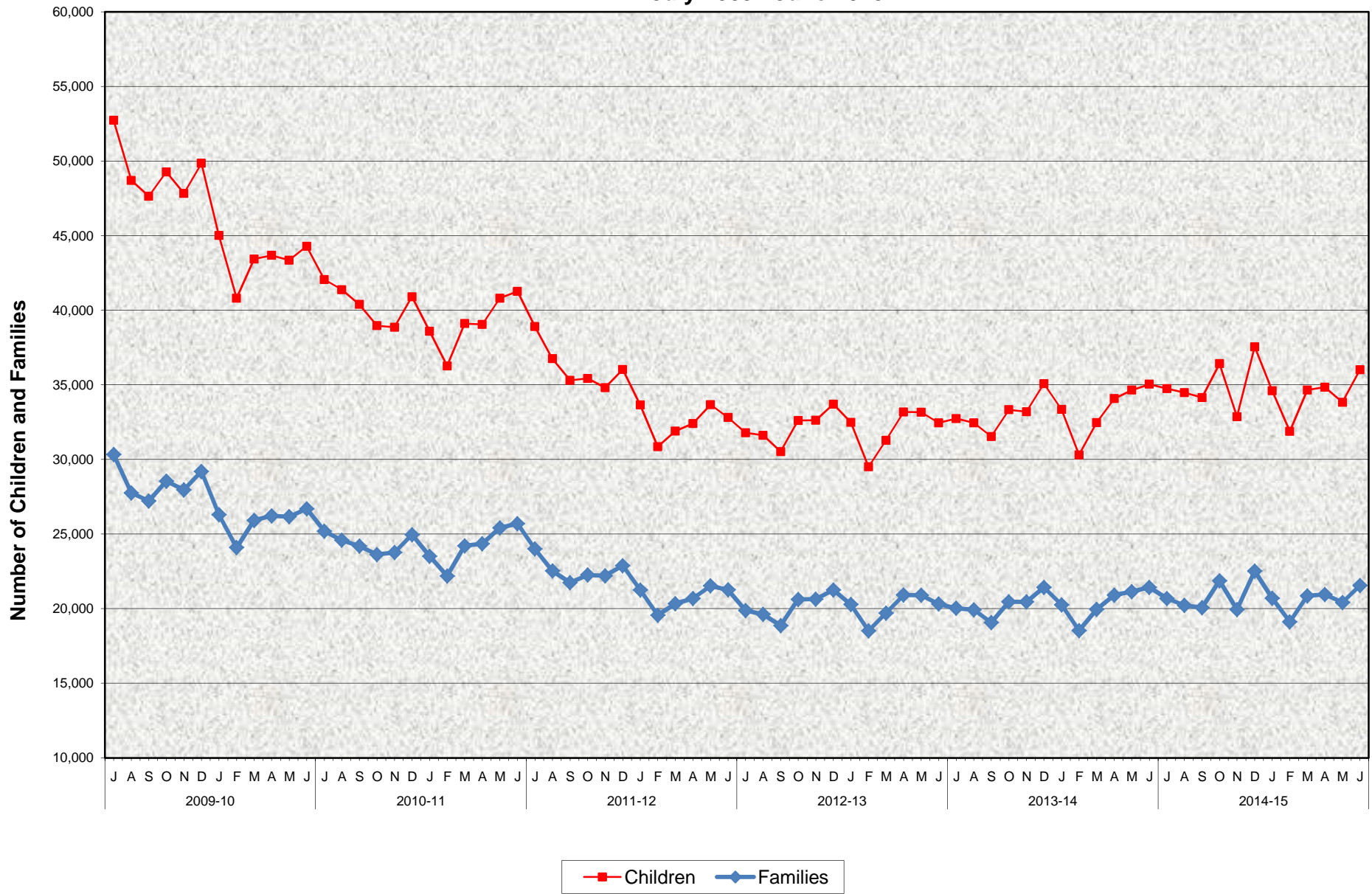


Stage 1 Child Care - CalWORKs Families Number of Children and Families with Child Care Payments Made July 2009 - June 2015



Stage 1 Child Care - CalWORKs Families
Number of Children and Families with Child Care Payments Made
July 2009 - June 2015

MONTHLY PERCENT CHANGE

FY		Jul	% Chg	Aug	% Chg	Sep	% Chg	Oct	% Chg	Nov	% Chg	Dec	% Chg	Jan	% Chg	Feb	% Chg	Mar	% Chg	Apr	% Chg	May	% Chg	Jun	% Chg
09/10	Children	52,720		48,691	-7.6%	47,641	-2.2%	49,265	3.4%	47,823	-2.9%	49,842	4.2%	45,003	-9.7%	40,806	-9.3%	43,434	6.4%	43,672	0.5%	43,345	-0.7%	44,279	2.2%
	Families	30,331		27,752	-8.5%	27,212	-1.9%	28,543	4.9%	27,960	-2.0%	29,199	4.4%	26,296	-9.9%	24,092	-8.4%	25,918	7.6%	26,215	1.1%	26,165	-0.2%	26,698	2.0%
10/11	Children	42,058	-5.0%	41,377	-1.6%	40,383	-2.4%	38,961	-3.5%	38,855	-0.3%	40,893	5.2%	38,581	-5.7%	36,264	-6.0%	39,103	7.8%	39,048	-0.1%	40,808	4.5%	41,257	1.1%
	Families	25,190	-5.6%	24,584	-2.4%	24,187	-1.6%	23,632	-2.3%	23,764	0.6%	24,953	5.0%	23,513	-5.8%	22,191	-5.6%	24,209	9.1%	24,356	0.6%	25,408	4.3%	25,693	1.1%
11/12	Children	38,897	-5.7%	36,745	-5.5%	35,304	-3.9%	35,424	0.3%	34,805	-1.7%	36,024	3.5%	33,646	-6.6%	30,849	-8.3%	31,900	3.4%	32,399	1.6%	33,675	3.9%	32,807	-2.6%
	Families	23,999	-6.6%	28,741	-6.1%	21,747	-3.5%	22,259	2.4%	22,207	-0.2%	22,881	3.0%	21,257	-7.1%	19,561	-8.0%	20,341	4.0%	20,681	1.7%	21,530	4.1%	21,263	-1.2%
12/13	Children	31,789	-3.1%	31,610	-0.6%	30,523	-3.4%	32,615	6.9%	32,621	0.0%	33,696	3.3%	32,480	-3.6%	29,502	-9.2%	31,278	6.0%	33,176	6.1%	33,158	-0.1%	32,450	-2.1%
	Families	19,873	-6.5%	19,618	-1.3%	18,866	-3.8%	20,624	9.3%	20,636	0.1%	21,256	3.0%	20,282	-4.6%	18,519	-8.7%	19,710	6.4%	20,914	6.1%	20,907	0.0%	20,312	-2.8%
13/14	Children	32,734	0.9%	32,456	-0.8%	31,535	-2.8%	33,330	5.7%	33,199	-0.4%	35,072	5.6%	33,345	-4.9%	30,295	-9.1%	32,469	7.2%	34,073	4.9%	34,641	1.7%	35,040	1.2%
	Families	20,027	-1.4%	19,926	-0.5%	19,074	-4.3%	20,465	7.3%	20,456	0.0%	21,432	4.8%	20,262	-5.5%	18,530	-8.5%	19,953	7.7%	20,902	4.8%	21,147	1.2%	21,432	1.3%
14/15	Children	34,747	-0.8%	36,005	6.4%	34,144	-1.0%	36,414	6.6%	32,860	-9.8%	37,542	14.2%	34,599	-7.8%	31,883	-7.8%	34,646	8.7%	34,845	0.6%	33,826	-2.9%	36,005	6.4%
	Families	20,681	-3.5%	21,558	5.6%	20,065	-0.8%	21,874	9.0%	19,945	-8.8%	22,515	12.9%	20,694	-8.1%	19,118	-7.6%	20,852	9.1%	20,953	0.5%	20,417	-2.6%	21,558	5.6%

TRENDS

- **The number of children with child care payments made increased 6.4% between May 2015 and June 2015**
Children payments increased 2.8% between June 2014 and June 2015
- **The number of families with child care payments made increased 5.6% between May 2015 and June 2015**
Family payments increased 0.6% between June 2014 and June 2015