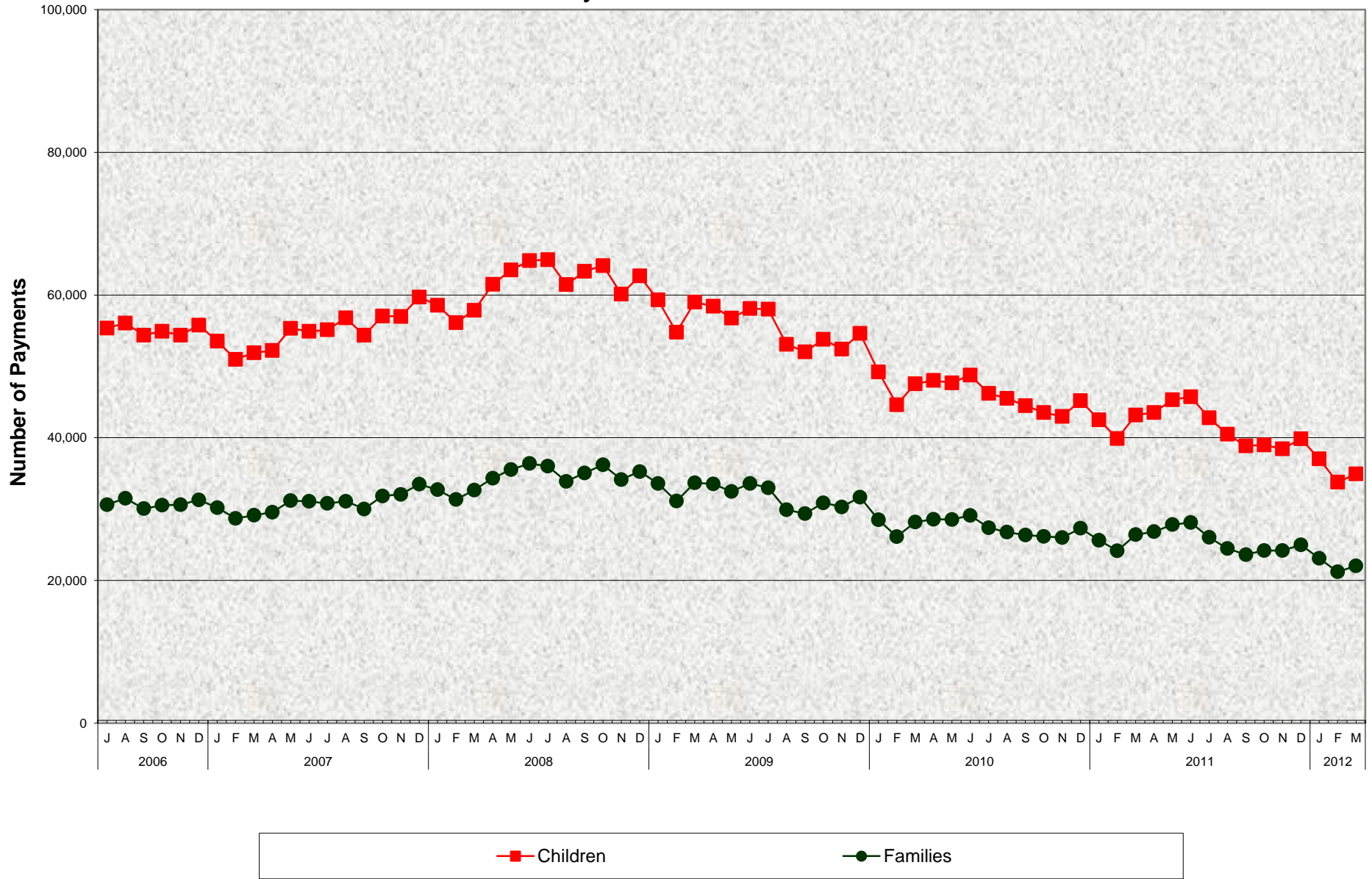


Stage 1 Child Care - Total (CalWORKs Families and Two Parent Families Combined)
Number of Payments Issued to Children and Families
 July 2006 - March 2012 ^{a/}



^{a/} Used prior month's data (February): Amador, Merced and Plumas.

Stage 1 Child Care - Total (CalWORKs Families and Two Parent Families Combined)
Number of Payments Issued to Children and Families
July 2006 - March 2012 ^{a/}

MONTHLY PERCENT CHANGE

FY		Jul	% Chg	Aug	% Chg	Sep	% Chg	Oct	% Chg	Nov	% Chg	Dec	% Chg	Jan	% Chg	Feb	% Chg	Mar	% Chg	Apr	% Chg	May	% Chg	Jun	% Chg
06/07	Children	58,716	8.3%	58,813	0.2%	55,359	-5.9%	56,060	1.3%	54,377	-3.0%	54,898	1.0%	54,372	-1.0%	55,780	2.6%	53,545	-4.0%	50,983	-4.8%	51,919	1.8%	52,221	0.6%
	Families	34,124	9.0%	34,058	-0.2%	30,628	-10.1%	31,502	2.9%	30,057	-4.6%	30,533	1.6%	30,620	0.3%	31,278	2.1%	30,208	-3.4%	28,685	-5.0%	29,135	1.6%	29,565	1.5%
07/08	Children	55,316	5.9%	54,920	-0.7%	55,123	0.4%	56,796	3.0%	54,365	-4.3%	57,064	5.0%	56,983	-0.1%	59,718	4.8%	58,562	-1.9%	56,132	-4.1%	57,865	3.1%	61,486	6.3%
	Families	31,174	5.4%	31,090	-0.3%	30,801	-0.9%	31,101	1.0%	30,013	-3.5%	31,826	6.0%	32,064	0.7%	33,497	4.5%	32,711	-2.3%	31,357	-4.1%	32,663	4.2%	34,333	5.1%
08/09	Children	63,519	3.3%	64,813	2.0%	64,961	0.2%	61,453	-5.4%	63,303	3.0%	64,125	1.3%	60,113	-6.3%	62,666	4.2%	59,308	-5.4%	54,781	-7.6%	58,998	7.7%	58,435	-1.0%
	Families	35,534	3.5%	36,401	2.4%	36,002	-1.1%	33,874	-5.9%	35,072	3.5%	36,194	3.2%	34,138	-5.7%	35,255	3.3%	33,572	-4.8%	31,122	-7.3%	33,693	8.3%	33,517	-0.5%
09/10	Children	58,016	-0.2%	53,092	-8.5%	52,042	-2.0%	53,803	3.4%	52,414	-2.6%	54,625	4.2%	49,230	-9.9%	44,618	-9.4%	47,570	6.6%	48,031	1.0%	47,686	-0.7%	48,770	2.3%
	Families	32,979	-1.8%	29,894	-9.4%	29,381	-1.7%	30,881	5.1%	30,308	-1.9%	31,682	4.5%	28,491	-10.1%	26,124	-8.3%	28,188	7.9%	28,562	1.3%	28,543	-0.1%	29,113	2.0%
10/11	Children	46,212	-5.2%	45,524	-1.5%	44,503	-2.2%	43,526	-2.2%	42,972	-1.3%	45,197	5.2%	42,520	-5.9%	39,874	-6.2%	43,173	8.3%	43,528	0.8%	45,332	4.1%	45,750	0.9%
	Families	27,395	-5.9%	26,760	-2.3%	26,354	-1.5%	26,159	-0.7%	25,994	-0.6%	27,304	5.0%	25,636	-6.1%	24,146	-5.8%	26,415	9.4%	26,825	1.6%	27,830	3.7%	28,125	1.1%
11/12	Children	42,788	-6.5%	40,479	-5.4%	38,855	-4.0%	38,977	0.3%	38,446	-1.4%	39,858	3.7%	37,054	-7.0%	33,765	-8.9%	34,926	3.4%						
	Families	26,035	-7.4%	24,472	-6.0%	23,617	-3.5%	24,192	2.4%	24,196	0.0%	24,986	3.3%	23,111	-7.5%	21,207	-8.2%	22,055	4.0%						

TRENDS

- **Payments to Children increased 3.4% between February 2012 and March 2012**
Children payments decreased 19.1% between March 2011 and March 2012
- **Payments to Families increased 4.0% between February 2012 and March 2012**
Family payments decreased 16.5% between March 2011 and March 2012

^{a/} Used prior month's data (February): Amador, Merced and Plumas.