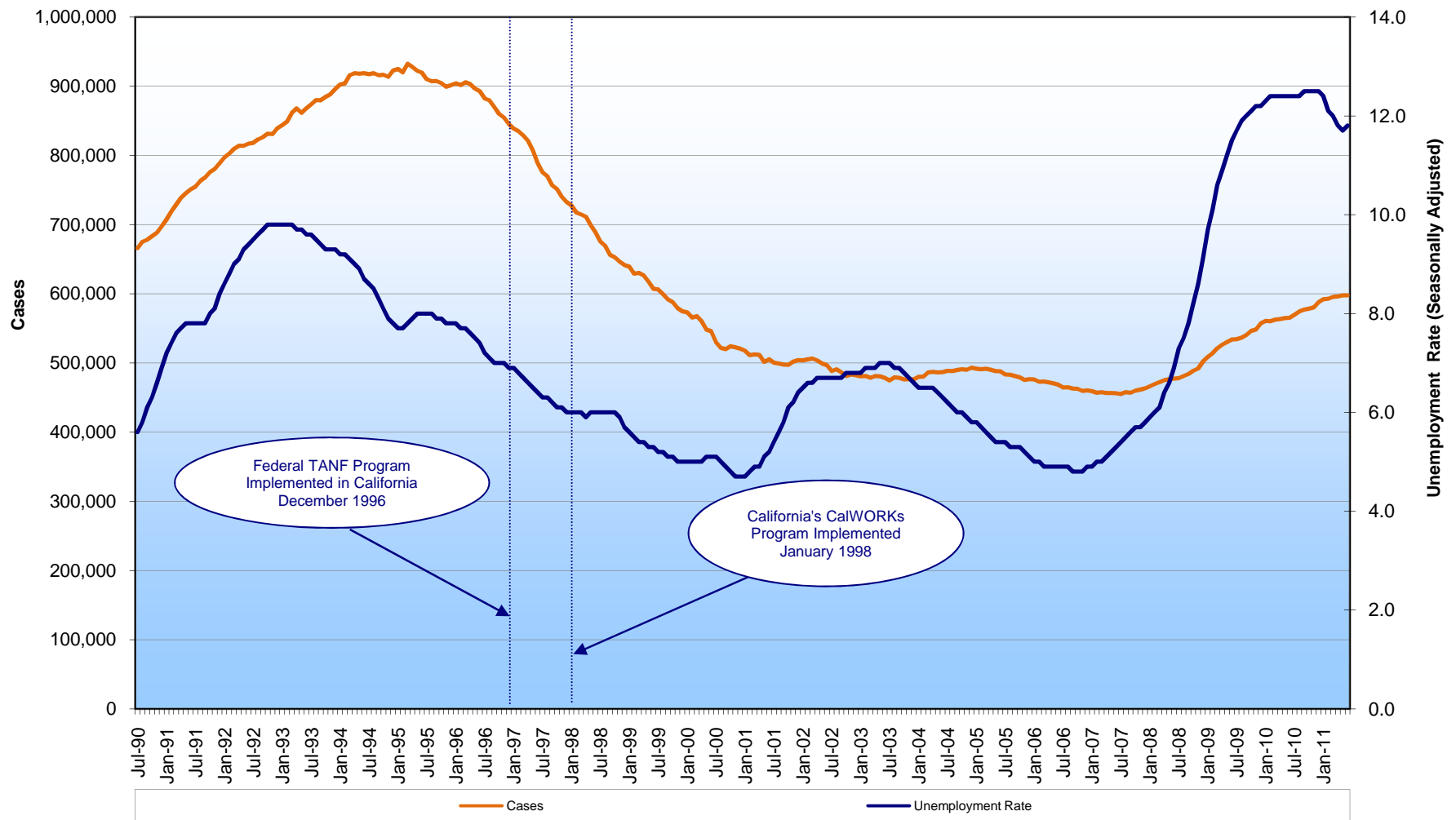


AFDC/CalWORKs Program Monthly Caseload and Unemployment Rates July 1990 - June 2011



AFDC/CalWORKs Program Monthly Caseload and Unemployment Rates July 1990 - June 2011

TRENDS

- The overall caseload has declined 35.9% since March 1995, the highest point in California's caseload.
- California's caseload has declined 29.3% since December 1996, when California's Temporary Assistance for Needy Families Program began.
- California's caseload has declined 17.9% since CalWORKs was implemented in January 1998 (between January 1998 and June 2011).
- California's caseload has increased 1.7% since the implementation of the Separate State Program (between October 1999 and June 2011).
- California's caseload has increased 4.9% in the last twelve months (between July 2010 and June 2011).

		July	August	September	October	November	December	January	February	March	April	May	June
90/91	Caseload	666,032	675,002	678,038	683,001	688,425	697,304	707,419	718,888	729,218	738,525	745,372	750,892
	Unemp. Rate	5.6	5.8	6.1	6.3	6.6	6.9	7.2	7.4	7.6	7.7	7.8	7.8
91/92	Caseload	754,700	763,199	767,848	775,733	780,246	788,588	797,046	802,715	809,594	813,981	814,095	817,187
	Unemp. Rate	7.8	7.8	7.8	8	8.1	8.4	8.6	8.8	9.0	9.1	9.3	9.4
92/93	Caseload	817,998	823,224	826,480	831,520	831,030	839,415	843,924	848,765	861,681	867,913	868,315	872,453
	Unemp. Rate	9.5	9.6	9.7	9.8	9.8	9.8	9.8	9.8	9.8	9.7	9.7	9.6
93/94	Caseload	873,768	880,021	879,468	884,546	888,350	896,002	902,361	904,275	915,733	918,930	918,265	918,814
	Unemp. Rate	9.6	9.5	9.4	9.3	9.3	9.3	9.2	9.2	9.1	9.0	8.9	8.7
94/95	Caseload	917,289	919,092	916,017	916,656	913,599	922,661	924,913	919,917	932,345	927,982	922,133	919,526
	Unemp. Rate	8.6	8.5	8.3	8.1	7.9	7.8	7.7	7.7	7.8	7.9	8.0	8.0
95/96	Caseload	910,272	907,072	907,487	904,655	899,094	901,382	904,150	901,428	905,660	903,006	896,820	892,726
	Unemp. Rate	8.0	8.0	7.9	7.9	7.8	7.8	7.8	7.7	7.7	7.6	7.5	7.4
96/97	Caseload	882,164	879,586	869,862	860,016	854,851	845,607	838,820	835,140	828,562	820,986	806,823	788,975
	Unemp. Rate	7.2	7.1	7.0	7.0	7.0	6.9	6.9	6.8	6.7	6.6	6.5	6.4
97/98	Caseload	776,022	769,904	756,950	751,262	740,221	732,304	727,695	717,288	714,853	711,228	699,164	689,220
	Unemp. Rate	6.3	6.3	6.2	6.1	6.1	6.0	6.0	6.0	6.0	5.9	6.0	6.0
98/99	Caseload	675,540	669,237	656,261	653,003	646,402	641,359	639,059	629,027	630,301	626,534	617,872	607,278
	Unemp. Rate	6.0	6.0	6.0	6.0	5.9	5.7	5.6	5.5	5.4	5.4	5.3	5.3
99/00	Caseload	606,485	599,784	591,977	587,947	579,718	574,696	573,202	565,452	567,549	559,885	548,382	545,958
	Unemp. Rate	5.2	5.2	5.1	5.1	5.0	5.0	5.0	5.0	5.0	5.0	5.1	5.1
00/01	Caseload	529,940	522,009	520,050	523,933	522,574	520,660	517,592	511,307	512,571	511,555	501,598	505,298
	Unemp. Rate	5.1	5.0	4.9	4.8	4.7	4.7	4.7	4.8	4.9	4.9	5.1	5.2
01/02	Caseload	500,482	499,169	497,818	497,439	502,019	504,298	503,738	505,132	506,236	503,836	499,266	496,783
	Unemp. Rate	5.4	5.6	5.8	6.1	6.2	6.4	6.5	6.6	6.6	6.7	6.7	6.7
02/03	Caseload	488,382	490,928	486,446	481,275	483,344	482,071	480,610	480,944	478,602	480,939	480,875	478,411
	Unemp. Rate	6.7	6.7	6.7	6.8	6.8	6.8	6.8	6.9	6.9	6.9	7.0	7.0
03/04	Caseload	474,776	479,299	478,455	476,327	476,691	476,005	480,092	480,437	486,446	487,003	486,511	486,745
	Unemp. Rate	7.0	6.9	6.9	6.8	6.7	6.6	6.5	6.5	6.5	6.5	6.4	6.3
04/05	Caseload	488,492	488,204	489,908	490,790	490,209	493,095	491,813	490,785	491,692	490,284	488,341	487,746
	Unemp. Rate	6.2	6.1	6.0	6.0	5.9	5.8	5.8	5.7	5.6	5.5	5.4	5.4
05/06	Caseload	483,288	482,886	481,041	479,041	475,567	476,667	476,310	472,723	473,180	472,013	470,494	468,597
	Unemp. Rate	5.4	5.3	5.3	5.3	5.2	5.1	5.0	5.0	4.9	4.9	4.9	4.9
06/07	Caseload	464,313	464,853	463,160	462,427	459,646	460,161	459,141	456,782	457,569	456,697	456,618	456,001
	Unemp. Rate	4.9	4.9	4.8	4.8	4.8	4.9	4.9	5.0	5.0	5.1	5.2	5.3
07/08	Caseload	454,956	457,657	457,069	460,003	461,581	463,333	466,522	469,252	472,147	474,958	476,518	477,413
	Unemp. Rate	5.4	5.5	5.6	5.7	5.7	5.8	5.9	6.0	6.1	6.4	6.6	6.9
08/09	Caseload	478,132	481,120	483,983	488,503	492,056	501,879	508,471	513,816	521,281	526,478	530,168	534,043
	Unemp. Rate	7.3	7.5	7.8	8.2	8.6	9.1	9.7	10.1	10.6	10.9	11.2	11.5
09/10	Caseload	534,249	536,464	540,475	546,527	548,111	557,279	560,630	560,534	562,565	563,406	564,728	565,194
	Unemp. Rate	11.7	11.9	12.0	12.1	12.2	12.2	12.3	12.4	12.4	12.4	12.4	12.4
10/11	Caseload	569,869	574,416	576,845	578,364	580,457	587,964	592,202	592,741	595,329	596,315	597,688	597,723
	Unemp. Rate	12.4	12.4	12.5	12.5	12.5	12.5	12.4	12.1	12.0	11.8	11.7	11.8