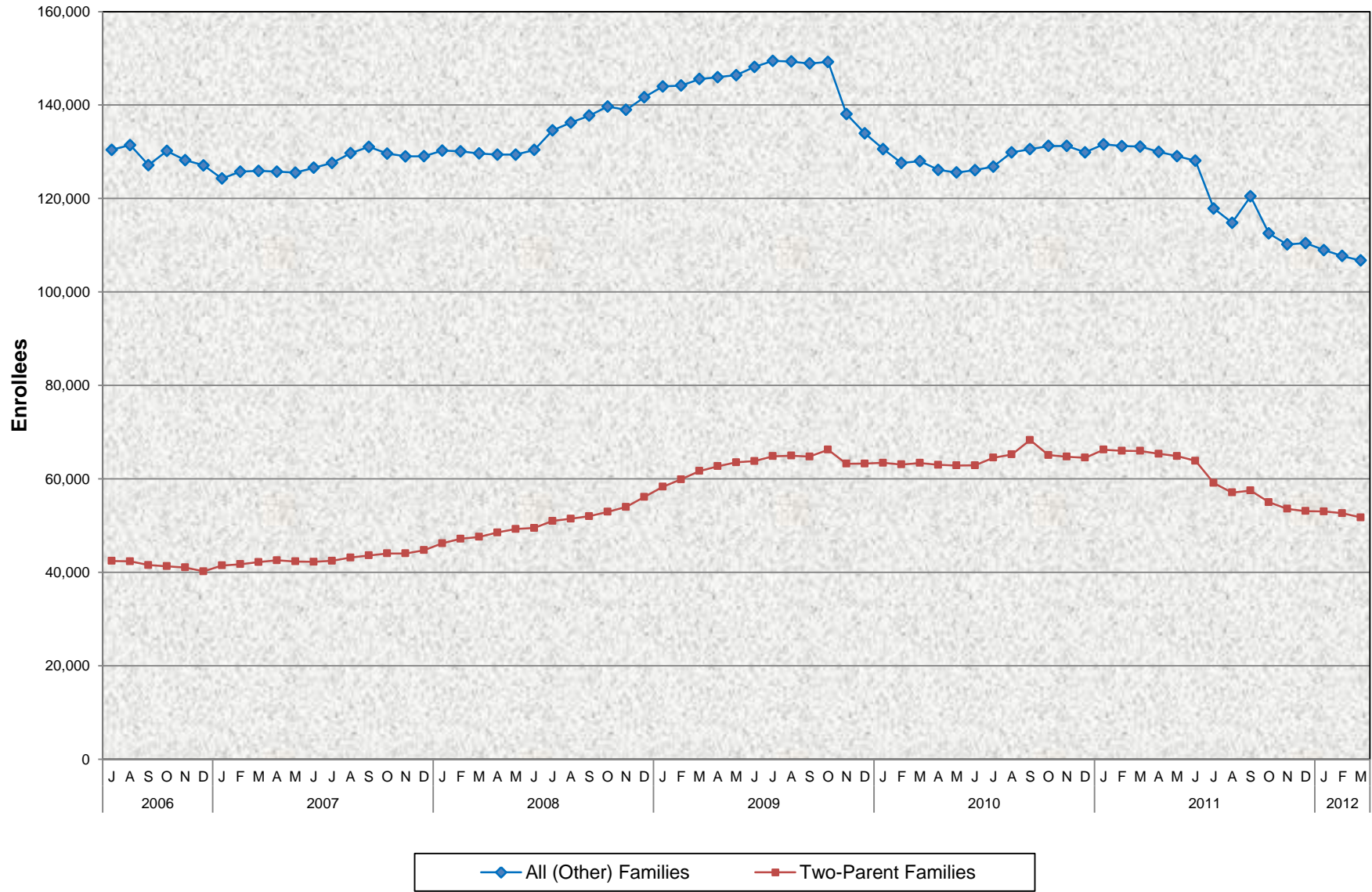


CalWORKs Welfare-to-Work Program Enrollees July 2006 - March 2012



**CalWORKs Welfare-to-Work Program
Enrollees
July 2006 - March 2012**

MONTHLY PERCENT CHANGE

FY		Jul	% Chg	Aug	% Chg	Sep	% Chg	Oct	% Chg	Nov	% Chg	Dec	% Chg	Jan	% Chg	Feb	% Chg	Mar	% Chg	Apr	% Chg	May	% Chg	Jun	% Chg
06/07	Total	172,843		173,770	0.5%	168,678	-2.9%	171,487	1.7%	169,246	-1.3%	167,286	-1.2%	165,742	-0.9%	167,493	1.1%	168,093	0.4%	168,307	0.1%	167,841	-0.3%	168,810	0.6%
	All (Other)	130,405		131,415	0.8%	127,148	-3.2%	130,178	2.4%	128,212	-1.5%	127,083	-0.9%	124,274	-2.2%	125,756	1.2%	125,905	0.1%	125,748	-0.1%	125,519	-0.2%	126,580	0.8%
	Two Parent	42,438		42,355	-0.2%	41,530	-1.9%	41,309	-0.5%	41,034	-0.7%	40,203	-2.0%	41,468	3.1%	41,737	0.6%	42,188	1.1%	42,559	0.9%	42,322	-0.6%	42,230	-0.2%
07/08	Total	170,057	0.7%	172,843	1.6%	174,681	1.1%	173,636	-0.6%	173,046	-0.3%	173,757	0.4%	176,461	1.6%	177,250	0.4%	177,212	0.0%	177,904	0.4%	178,647	0.4%	179,849	0.7%
	All (Other)	127,612	0.8%	129,693	1.6%	131,065	1.1%	129,604	-1.1%	129,021	-0.4%	129,032	0.0%	130,254	0.9%	130,086	-0.1%	129,642	-0.3%	129,385	-0.2%	129,394	0.0%	130,376	0.8%
	Two Parent	42,445	0.5%	43,150	1.7%	43,616	1.1%	44,032	1.0%	44,025	0.0%	44,725	1.6%	46,207	3.3%	47,164	2.1%	47,570	0.9%	48,519	2.0%	49,253	1.5%	49,473	0.4%
08/09	Total	185,549	3.2%	187,710	1.2%	189,732	1.1%	192,631	1.5%	192,938	0.2%	197,810	2.5%	202,255	2.2%	204,040	0.9%	207,245	1.6%	208,656	0.7%	209,935	0.6%	211,968	1.0%
	All (Other)	134,570	3.2%	136,242	1.2%	137,719	1.1%	139,699	1.4%	138,961	-0.5%	141,682	2.0%	143,966	1.6%	144,163	0.1%	145,573	1.0%	145,951	0.3%	146,403	0.3%	148,171	1.2%
	Two Parent	50,979	3.0%	51,468	1.0%	52,013	1.1%	52,932	1.8%	53,977	2.0%	56,128	4.0%	58,289	3.9%	59,877	2.7%	61,672	3.0%	62,705	1.7%	63,532	1.3%	63,797	0.4%
09/10	Total	214,295	1.1%	214,252	0.0%	213,640	-0.3%	215,468	0.9%	201,320	-6.6%	197,218	-2.0%	193,985	-1.6%	190,669	-1.7%	191,417	0.4%	189,134	-1.2%	188,436	-0.4%	188,953	0.3%
	All (Other)	149,459	0.9%	149,306	-0.1%	148,881	-0.3%	149,238	0.2%	138,081	-7.5%	133,955	-3.0%	130,560	-2.5%	127,600	-2.3%	128,009	0.3%	126,127	-1.5%	125,563	-0.4%	126,076	0.4%
	Two Parent	64,836	1.6%	64,946	0.2%	64,759	-0.3%	66,230	2.3%	63,239	-4.5%	63,263	0.0%	63,425	0.3%	63,069	-0.6%	63,408	0.5%	63,007	-0.6%	62,873	-0.2%	62,877	0.0%
10/11	Total	191,363	1.3%	195,100	2.0%	198,858	1.9%	196,313	-1.3%	195,998	-0.2%	194,395	-0.8%	197,821	1.8%	197,197	-0.3%	197,085	-0.1%	195,322	-0.9%	193,949	-0.7%	191,936	-1.0%
	All (Other)	126,828	0.6%	129,873	2.4%	130,544	0.5%	131,235	0.5%	131,249	0.0%	129,875	-1.0%	131,593	1.3%	131,207	-0.3%	131,110	-0.1%	129,978	-0.9%	129,073	-0.7%	128,076	-0.8%
	Two Parent	64,535	2.6%	65,227	1.1%	68,314	4.7%	65,078	-4.7%	64,749	-0.5%	64,520	-0.4%	66,228	2.6%	65,990	-0.4%	65,975	-0.02%	65,344	-1.0%	64,876	-0.7%	63,860	-1.6%
11/12	Total	176,954	-7.8%	171,885	-2.9%	177,949	3.5%	167,528	-5.9%	163,734	-2.3%	163,541	-0.1%	161,960	-1.0%	160,348	-1.0%	158,460	-1.2%						
	All (Other)	117,856	-8.0%	114,810	-2.6%	120,449	4.9%	112,536	-6.6%	110,158	-2.1%	110,452	0.3%	108,945	-1.4%	107,700	-1.1%	106,737	-0.9%						
	Two Parent	59,098	-7.5%	57,075	-3.4%	57,500	0.7%	54,992	-4.4%	53,576	-2.6%	53,089	-0.9%	53,015	-0.1%	52,648	-0.7%	51,723	-1.8%						

TRENDS

- The number of CalWORKs adults participating in CalWORKs decreased 1.2% between February 2012 and March 2012.
0.9% decrease in All (Other) Families.
1.8% decrease in Two-Parent Families.
- The number of CalWORKs adults participating in CalWORKs decreased 19.6% between March 2011 and March 2012.
18.6% decrease in All (Other) Families.
21.6% decrease in Two-Parent Families.