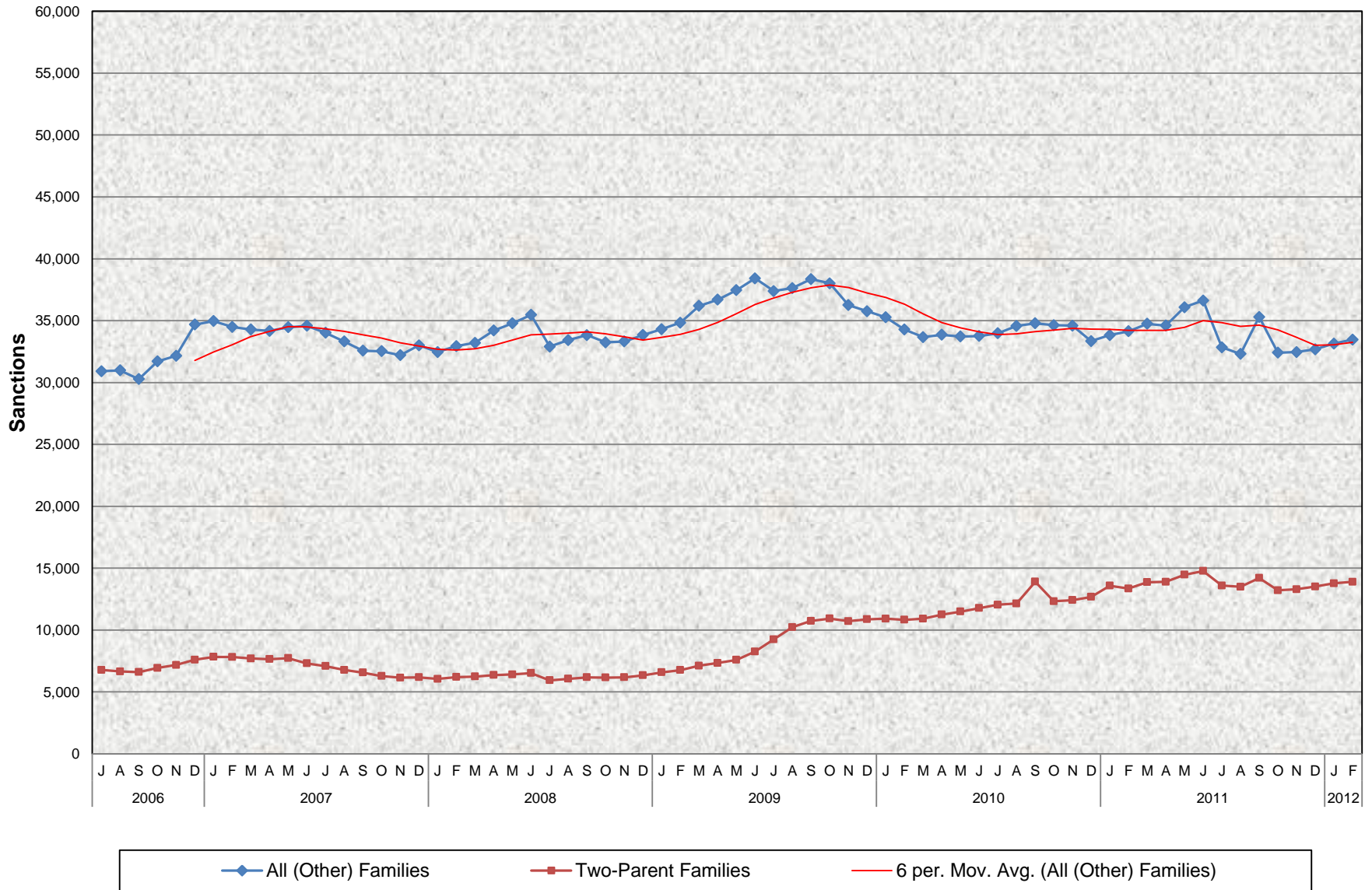


### CalWORKs Welfare-to-Work Program Sanctions July 2006 - February 2012 <sup>a/</sup>



<sup>a/</sup> Used prior month's data (January): Mariposa.  
 Source: WTW 25 and WTW 25A

**CalWORKs Welfare-to-Work Program  
Sanctions  
July 2006 - February 2012 <sup>a/</sup>**

**MONTHLY PERCENT CHANGE**

FY		Jul	% Chg	Aug	% Chg	Sep	% Chg	Oct	% Chg	Nov	% Chg	Dec	% Chg	Jan	% Chg	Feb	% Chg	Mar	% Chg	Apr	% Chg	May	% Chg	Jun	% Chg
06/07	Total	37,693		37,639	-0.1%	36,884	-2.0%	38,645	4.8%	39,339	1.8%	42,282	7.5%	42,804	1.2%	42,317	-1.1%	41,985	-0.8%	41,821	-0.4%	42,199	0.9%	41,900	-0.7%
	All (Other)	30,914		30,987	0.2%	30,284	-2.3%	31,713	4.7%	32,166	1.4%	34,682	7.8%	34,972	0.8%	34,497	-1.4%	34,288	-0.6%	34,169	-0.3%	34,465	0.9%	34,590	0.4%
	Two Parent	6,779		6,652	-1.9%	6,600	-0.8%	6,932	5.0%	7,173	3.5%	7,600	6.0%	7,832	3.1%	7,820	-0.2%	7,697	-1.6%	7,652	-0.6%	7,734	1.1%	7,310	-5.5%
07/08	Total	41,113	-1.9%	40,091	-2.5%	39,141	-2.4%	38,817	-0.8%	38,361	-1.2%	39,186	2.2%	38,516	-1.7%	39,142	1.6%	39,447	0.8%	40,566	2.8%	41,202	1.6%	42,002	1.9%
	All (Other)	34,026	-1.6%	33,321	-2.1%	32,578	-2.2%	32,537	-0.1%	32,207	-1.0%	33,010	2.5%	32,461	-1.7%	32,942	1.5%	33,207	0.8%	34,207	3.0%	34,791	1.7%	35,475	2.0%
	Two Parent	7,087	-3.1%	6,770	-4.5%	6,563	-3.1%	6,280	-4.3%	6,154	-2.0%	6,176	0.4%	6,055	-2.0%	6,200	2.4%	6,240	0.6%	6,359	1.9%	6,411	0.8%	6,527	1.8%
08/09	Total	38,845	-7.5%	39,482	1.6%	40,012	1.3%	39,413	-1.5%	39,498	0.2%	40,180	1.7%	40,902	1.8%	41,603	1.7%	43,309	4.1%	44,034	1.7%	45,050	2.3%	46,678	3.6%
	All (Other)	32,910	-7.2%	33,424	1.6%	33,827	1.2%	33,250	-1.7%	33,314	0.2%	33,840	1.6%	34,316	1.4%	34,840	1.5%	36,191	3.9%	36,697	1.4%	37,459	2.1%	38,414	2.5%
	Two Parent	5,935	-9.1%	6,058	2.1%	6,185	2.1%	6,163	-0.4%	6,184	0.3%	6,340	2.5%	6,586	3.9%	6,763	2.7%	7,118	5.2%	7,337	3.1%	7,591	3.5%	8,264	8.9%
09/10	Total	46,645	-0.1%	47,861	2.6%	49,092	2.6%	48,944	-0.3%	46,974	-4.0%	46,631	-0.7%	46,190	-0.9%	45,111	-2.3%	44,587	-1.2%	45,112	1.2%	45,219	0.2%	45,536	0.7%
	All (Other)	37,396	-2.7%	37,630	0.6%	38,357	1.9%	38,012	-0.9%	36,252	-4.6%	35,767	-1.3%	35,273	-1.4%	34,280	-2.8%	33,670	-1.8%	33,859	0.6%	33,725	-0.4%	33,762	0.1%
	Two Parent	9,249	11.9%	10,231	10.6%	10,735	4.9%	10,932	1.8%	10,722	-1.9%	10,864	1.3%	10,917	0.5%	10,831	-0.8%	10,917	0.8%	11,253	3.1%	11,494	2.1%	11,774	2.4%
10/11	Total	46,025	1.1%	46,721	1.5%	48,691	4.2%	46,961	-3.6%	47,006	0.1%	46,032	-2.1%	47,418	3.0%	47,495	0.2%	48,605	2.3%	48,507	-0.2%	50,548	4.2%	51,407	1.7%
	All (Other)	33,980	0.6%	34,573	1.7%	34,788	0.6%	34,635	-0.4%	34,592	-0.1%	33,352	-3.6%	33,833	1.4%	34,146	0.9%	34,742	1.7%	34,609	-0.4%	36,084	4.3%	36,632	1.5%
	Two Parent	12,045	2.3%	12,148	0.9%	13,903	14.4%	12,326	-11.3%	12,414	0.7%	12,680	2.1%	13,585	7.1%	13,349	-1.7%	13,863	3.9%	13,898	0.3%	14,464	4.1%	14,775	2.2%
10/11	Total	46,447	-9.6%	45,801	-1.4%	49,505	8.1%	45,626	-7.8%	45,753	0.3%	46,203	1.0%	46,924	1.6%	47,359	0.9%								
	All (Other)	32,850	-10.3%	32,309	-1.6%	35,302	9.3%	32,411	-8.2%	32,466	0.2%	32,685	0.7%	33,148	1.4%	33,464	1.0%								
	Two Parent	13,597	-8.0%	13,492	-0.8%	14,203	5.3%	13,215	-7.0%	13,287	0.5%	13,518	1.7%	13,776	1.9%	13,895	0.9%								

**TRENDS**

- **The number of CalWORKs adults sanctioned for not participating in the CalWORKs Welfare-to-Work Program increased 0.9% between January 2012 and February 2012.**  
1.0% increase in All (Other) Families.  
0.9% increase in Two-Parent Families.
- **The number of CalWORKs adults sanctioned for not participating in the CalWORKs Welfare-to-Work Program decreased 0.3% between February 2011 and February 2012.**  
2.0% decrease in All (Other) Families.  
4.1% increase in Two-Parent Families.