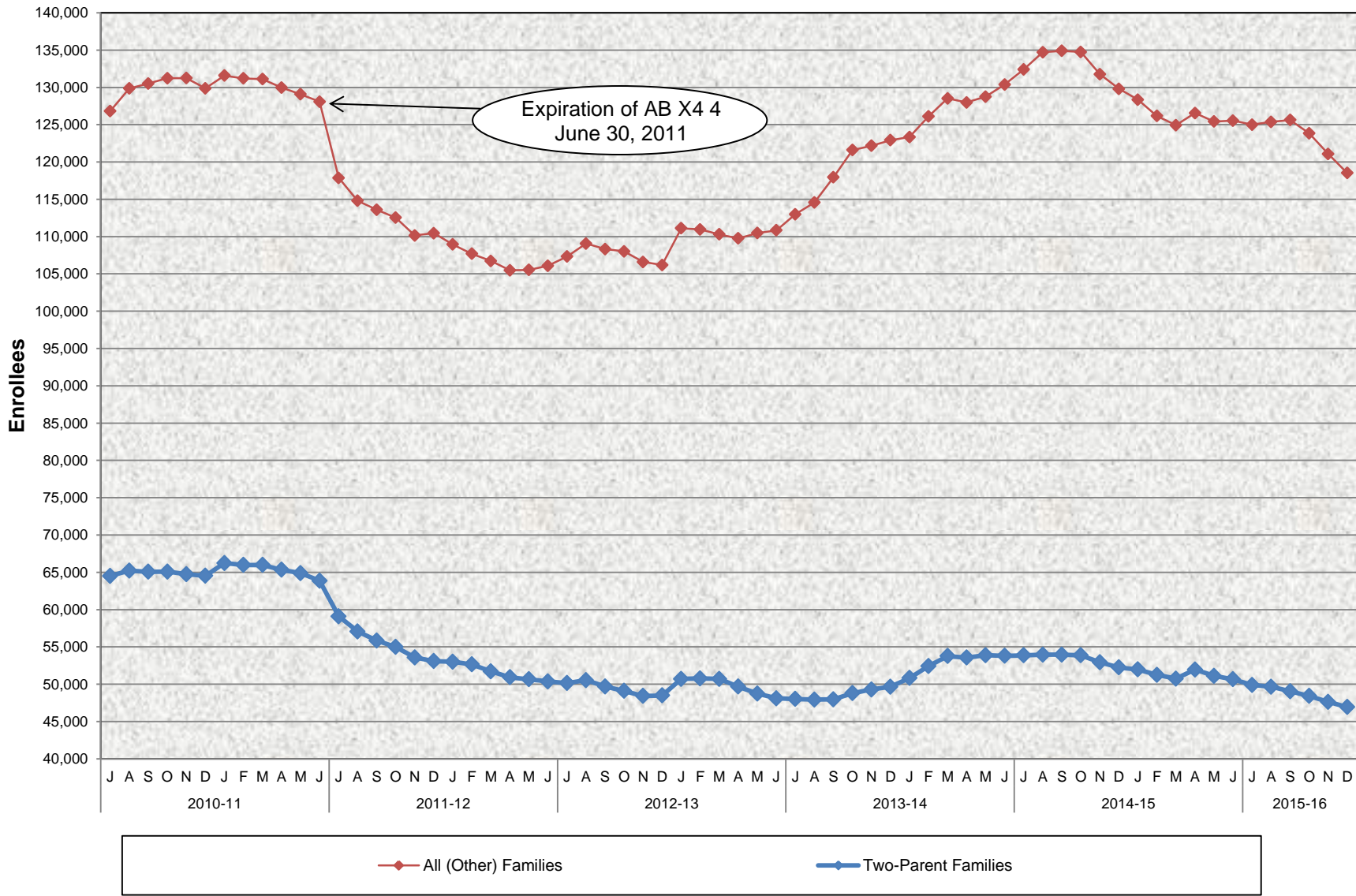


CalWORKs Welfare-to-Work Program Enrollees July 2010 - December 2015



**CalWORKs Welfare-to-Work Program
Enrollees
July 2010 - December 2015**

MONTHLY PERCENT CHANGE

FY		Jul	% Chg	Aug	% Chg	Sep	% Chg	Oct	% Chg	Nov	% Chg	Dec	% Chg	Jan	% Chg	Feb	% Chg	Mar	% Chg	Apr	% Chg	May	% Chg	Jun	% Chg
10/11	Total	191,338		195,071	2.0%	195,594	0.3%	196,307	0.4%	195,998	-0.2%	194,395	-0.8%	197,821	1.8%	197,197	-0.3%	197,085	-0.1%	195,322	-0.9%	193,949	-0.7%	191,936	-1.0%
	All (Other)	126,823		129,854	2.4%	130,522	0.5%	131,230	0.5%	131,249	0.0%	129,875	-1.0%	131,593	1.3%	131,207	-0.3%	131,110	-0.1%	129,978	-0.9%	129,073	-0.7%	128,076	-0.8%
	Two Parent	64,515		65,217	1.1%	65,072	-0.2%	65,077	0.0%	64,749	-0.5%	64,520	-0.4%	66,228	2.6%	65,990	-0.4%	65,975	0.0%	65,344	-1.0%	64,876	-0.7%	63,860	-1.6%
11/12	Total	176,954	-7.8%	171,885	-2.9%	169,453	-1.4%	167,528	-1.1%	163,734	-2.3%	163,541	-0.1%	161,960	-1.0%	160,348	-1.0%	158,460	-1.2%	156,393	-1.3%	156,182	-0.1%	156,458	0.2%
	All (Other)	117,856	-8.0%	114,810	-2.6%	113,607	-1.0%	112,536	-0.9%	110,158	-2.1%	110,452	0.3%	108,945	-1.4%	107,700	-1.1%	106,737	-0.9%	105,474	-1.2%	105,534	0.1%	106,086	0.5%
	Two Parent	59,098	-7.5%	57,075	-3.4%	55,846	-2.2%	54,992	-1.5%	53,576	-2.6%	53,089	-0.9%	53,015	-0.1%	52,648	-0.7%	51,723	-1.8%	50,919	-1.6%	50,648	-0.5%	50,372	-0.5%
12/13	Total	157,467	0.6%	159,597	1.4%	158,002	-1.0%	157,116	-0.6%	155,024	-1.3%	154,677	-0.2%	159,417	3.1%	161,748	1.5%	160,975	-0.5%	159,462	-0.9%	159,182	-0.2%	158,936	-0.2%
	All (Other)	107,326	1.2%	109,060	1.6%	108,319	-0.7%	108,018	-0.3%	106,602	-1.3%	106,190	-0.4%	108,717	2.4%	110,966	2.1%	110,269	-0.6%	109,789	-0.4%	110,442	0.6%	110,841	0.4%
	Two Parent	50,141	-0.5%	50,537	0.8%	49,683	-1.7%	49,098	-1.2%	48,422	-1.4%	48,487	0.1%	50,700	4.6%	50,782	0.2%	50,706	-0.1%	49,673	-2.0%	48,740	-1.9%	48,095	-1.3%
13/14	Total	161,019	1.3%	162,492	0.9%	165,853	2.1%	170,400	2.7%	171,467	0.6%	172,573	0.6%	174,175	0.9%	178,545	2.5%	182,290	2.1%	181,556	-0.4%	182,630	0.6%	184,183	0.9%
	All (Other)	112,996	1.9%	114,552	1.4%	117,914	2.9%	121,600	3.1%	122,182	0.5%	122,923	0.6%	123,353	0.3%	126,118	2.2%	128,525	1.9%	127,984	-0.4%	128,751	0.6%	130,381	1.3%
	Two Parent	48,023	-0.1%	47,940	-0.2%	47,939	0.0%	48,800	1.8%	49,285	1.0%	49,650	0.7%	50,822	2.4%	52,427	3.2%	53,765	2.6%	53,572	-0.4%	53,879	0.6%	53,802	-0.1%
14/15	Total	186,277	1.1%	188,668	1.3%	188,859	0.1%	188,626	-0.1%	184,709	-2.1%	182,037	-1.4%	180,322	-0.9%	177,424	-1.6%	175,667	-1.0%	178,517	1.6%	179,488	0.5%	174,367	-2.9%
	All (Other)	132,405	1.6%	134,718	1.7%	134,904	0.1%	134,752	-0.1%	131,772	-2.2%	129,799	-1.5%	128,351	-1.1%	126,171	-1.7%	124,927	-1.0%	126,557	1.3%	125,420	-0.9%	125,550	0.1%
	Two Parent	53,872	0.1%	53,950	0.1%	53,955	0.0%	53,874	-0.2%	52,937	-1.7%	52,238	-1.3%	51,971	-0.5%	51,253	-1.4%	50,740	-1.0%	51,960	2.4%	51,117	-1.6%	50,657	-0.9%
15/16	Total	174,903	0.3%	175,030	0.1%	174,666	-0.2%	172,274	-1.4%	168,711	-2.1%	165,447	-1.9%												
	All (Other)	125,003	-0.4%	125,381	0.3%	125,626	0.2%	123,852	-1.4%	121,079	-2.2%	118,521	-2.1%												
	Two Parent	49,900	-1.5%	49,649	-0.5%	49,040	-1.2%	48,422	-1.3%	47,632	-1.6%	46,926	-1.5%												

TRENDS

- **The number of CalWORKs adults participating in CalWORKs decreased 1.9% between November 2015 and December 2015.**
2.1% decrease in All (Other) Families.
1.5% decrease in Two-Parent Families.
- **The number of CalWORKs adults participating in CalWORKs decreased 9.1% between December 2014 and December 2015.**
8.7% decrease in All (Other) Families.
10.2% decrease in Two-Parent Families.
- SB 72 extended the CalWORKs Short-Term exemptions for cases with young children and for cases with good cause for lack of supportive services until June 30, 2012.
- SB 1041 further extended the CalWORKs Short-Term exemptions for cases with young children and for cases with good cause for lack of supportive services until December 31, 2012.