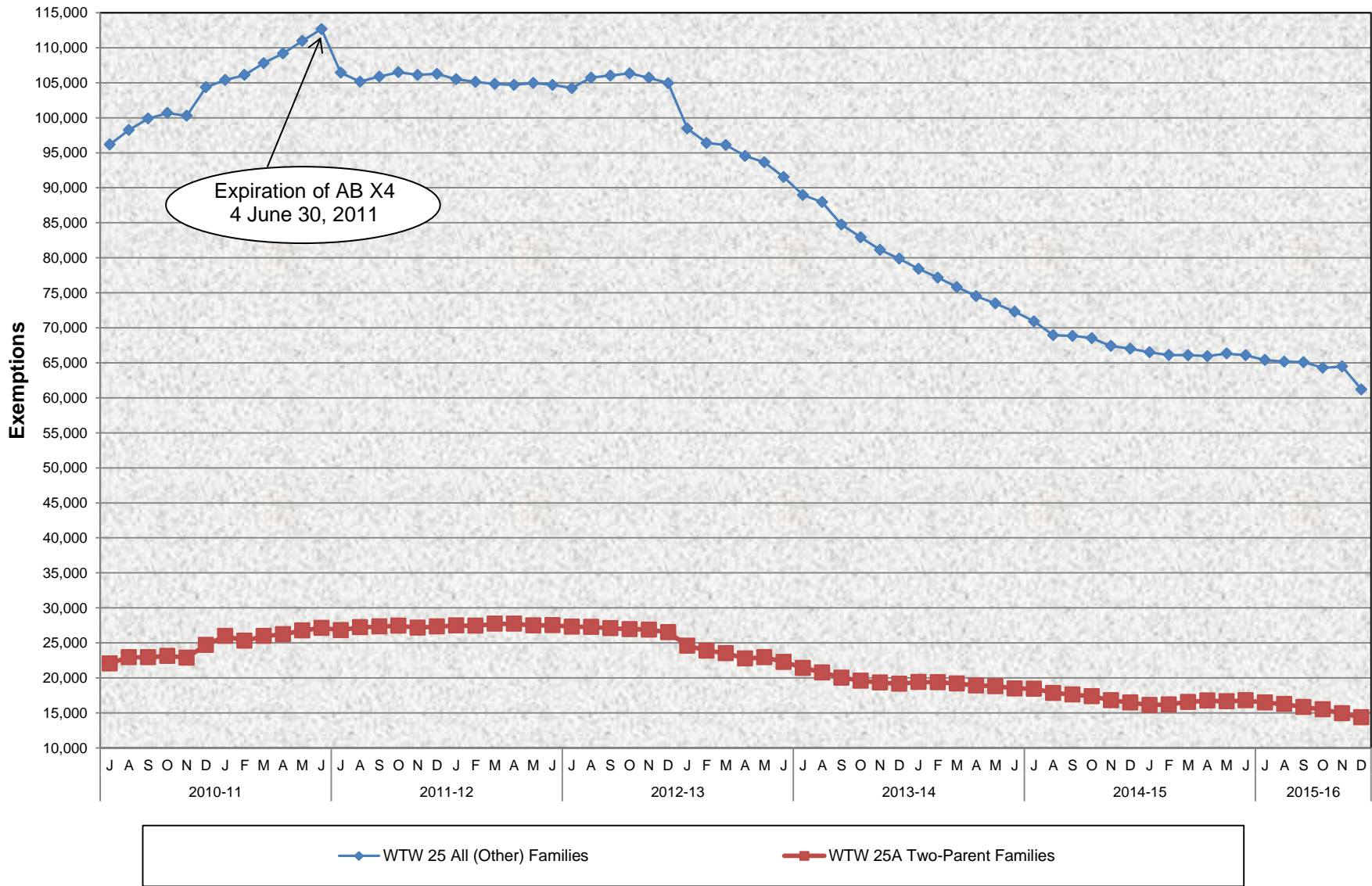


### CalWORKs Welfare-to-Work Program Exemptions July 2010 - December 2015



**CalWORKs Welfare-to-Work Program  
Exemptions  
July 2010 - December 2015**

**MONTHLY PERCENT CHANGE**

FY		Jul	% Chg	Aug	% Chg	Sep	% Chg	Oct	% Chg	Nov	% Chg	Dec	% Chg	Jan	% Chg	Feb	% Chg	Mar	% Chg	Apr	% Chg	May	% Chg	Jun	% Chg
10/11	<b>Total</b>	118,243		121,221	2.5%	122,831	1.3%	123,819	0.8%	123,146	-0.5%	129,098	4.8%	131,374	1.8%	131,403	0.0%	133,782	1.8%	135,395	1.2%	137,735	1.7%	139,803	1.5%
	<b>All (Other)</b>	96,182		98,257	2.2%	99,888	1.7%	100,683	0.8%	100,272	-0.4%	104,382	4.1%	105,400	1.0%	106,108	0.7%	107,808	1.6%	109,175	1.3%	110,967	1.6%	112,662	1.5%
	<b>Two Parent</b>	22,061		22,964	4.1%	22,943	-0.1%	23,136	0.8%	22,874	-1.1%	24,716	8.1%	25,974	5.1%	25,295	-2.6%	25,974	2.7%	26,220	0.9%	26,768	2.1%	27,141	1.4%
11/12	<b>Total</b>	133,249	-4.7%	132,396	-0.6%	133,210	0.6%	133,944	0.6%	133,297	-0.5%	133,602	0.2%	132,995	-0.5%	132,559	-0.3%	132,547	0.0%	132,418	-0.1%	132,438	0.0%	132,210	-0.2%
	<b>All (Other)</b>	106,431	-5.5%	105,166	-1.2%	105,869	0.7%	106,496	0.6%	106,121	-0.4%	106,267	0.1%	105,509	-0.7%	105,122	-0.4%	104,824	-0.3%	104,694	-0.1%	104,959	0.3%	104,682	-0.3%
	<b>Two Parent</b>	26,818	-1.2%	27,230	1.5%	27,341	0.4%	27,448	0.4%	27,176	-1.0%	27,335	0.6%	27,486	0.6%	27,437	-0.2%	27,723	1.0%	27,724	0.0%	27,479	-0.9%	27,528	0.2%
12/13	<b>Total</b>	131,539	-0.5%	133,021	1.1%	133,094	0.1%	133,314	0.2%	132,605	-0.5%	131,472	-0.9%	123,065	-6.4%	120,301	-2.2%	119,666	-0.5%	117,497	-1.8%	116,626	-0.7%	113,806	-2.4%
	<b>All (Other)</b>	104,242	-0.4%	105,737	1.4%	106,015	0.3%	106,347	0.3%	105,718	-0.6%	104,956	-0.7%	98,466	-6.2%	96,413	-2.1%	96,140	-0.3%	94,683	-1.5%	93,680	-1.1%	91,525	-2.3%
	<b>Two Parent</b>	27,297	-0.8%	27,284	0.0%	27,079	-0.8%	26,967	-0.4%	26,887	-0.3%	26,516	-1.4%	24,599	-7.2%	23,888	-2.9%	23,526	-1.5%	22,814	-3.0%	22,946	0.6%	22,281	-2.9%
13/14	<b>Total</b>	110,394	-3.0%	108,744	-1.5%	104,824	-3.6%	102,526	-2.2%	100,479	-2.0%	99,035	-1.4%	97,825	-1.2%	96,566	-1.3%	94,988	-1.6%	93,426	-1.6%	92,292	-1.2%	90,780	-1.6%
	<b>All (Other)</b>	88,977	-2.8%	87,970	-1.1%	84,807	-3.6%	82,923	-2.2%	81,150	-2.1%	79,874	-1.6%	78,430	-1.8%	77,186	-1.6%	75,810	-1.8%	74,506	-1.7%	73,473	-1.4%	72,293	-1.6%
	<b>Two Parent</b>	21,417	-3.9%	20,774	-3.0%	20,017	-3.6%	19,603	-2.1%	19,329	-1.4%	19,161	-0.9%	19,395	1.2%	19,380	-0.1%	19,178	-1.0%	18,920	-1.3%	18,819	-0.5%	18,487	-1.8%
14/15	<b>Total</b>	89,388	-1.5%	86,780	-2.9%	86,478	-0.3%	85,911	-0.7%	84,180	-2.0%	83,515	-0.8%	82,608	-1.1%	82,324	-0.3%	82,647	0.4%	82,708	0.1%	84,847	2.6%	81,790	-3.6%
	<b>All (Other)</b>	70,927	-1.9%	68,941	-2.8%	68,857	-0.1%	68,535	-0.5%	67,394	-1.7%	67,020	-0.6%	66,504	-0.8%	66,116	-0.6%	66,092	0.0%	65,959	-0.2%	66,077	0.2%	64,998	-1.6%
	<b>Two Parent</b>	18,461	-0.1%	17,839	-3.4%	17,621	-1.2%	17,376	-1.4%	16,786	-3.4%	16,495	-1.7%	16,104	-2.4%	16,208	0.6%	16,555	2.1%	16,749	1.2%	18,770	12.1%	16,792	-10.5%
15/16	<b>Total</b>	81,873	0.1%	81,422	-0.6%	80,920	-0.6%	79,792	-1.4%	79,401	-0.5%	75,564	-4.8%												
	<b>All (Other)</b>	65,403	0.6%	65,170	-0.4%	65,097	-0.1%	64,291	-1.2%	64,474	0.3%	61,202	-5.1%												
	<b>Two Parent</b>	16,470	-1.9%	16,252	-1.3%	15,823	-2.6%	15,501	-2.0%	14,927	-3.7%	14,362	-3.8%												

**TRENDS**

- The number of CalWORKs adults exempted from participating in the CalWORKs Welfare-to-Work Program decreased 4.8% between **November 2015 and December 2015**.  
5.1% decrease in All (Other) Families.  
3.8% decrease in Two-Parent Families.
- The number of CalWORKs adults exempted from participating in the CalWORKs Welfare-to-Work Program decreased 9.5% between **December 2014 and December 2015**.  
8.7% decrease in All (Other) Families.  
12.9% decrease in Two-Parent Families.
- SB 72 extended the CalWORKs Short-Term exemptions for cases with young children and for cases with good cause for lack of supportive services until June 30, 2012.
- SB 1041 further extended the CalWORKs Short-Term exemptions for cases with young children and for cases with good cause for lack of supportive services until December 31, 2012.