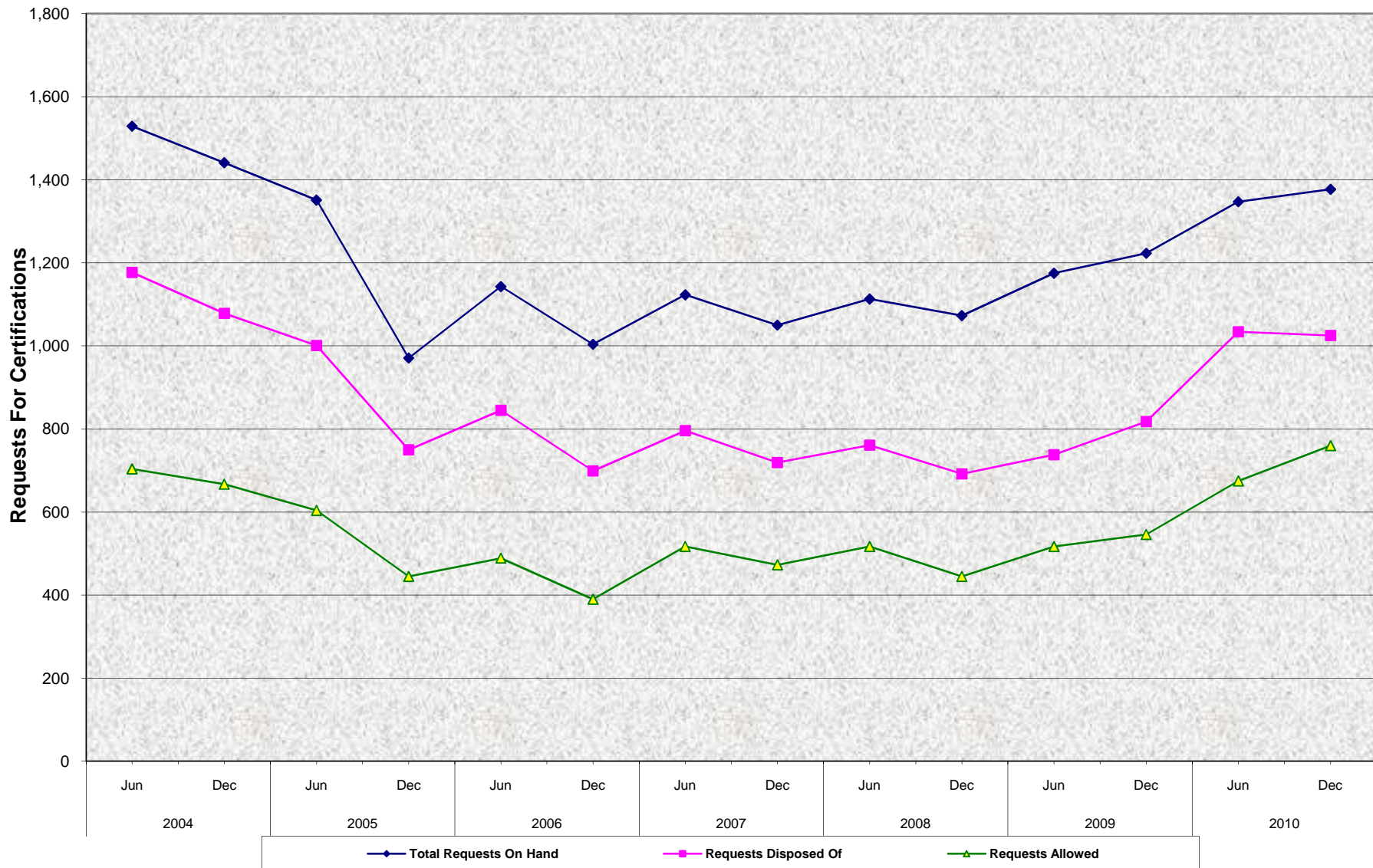


Adult Programs Out-Of-Home Care Total Requests For Certifications On Hand, Disposed Of^{a/} and Allowed^{b/} June 2004 - December 2010



^{a/} Allowed, denied, withdrawn/cancelled.
^{b/} Certified to SSA.
 Source: ABD 216

**Adult Programs Out-Of-Home Care
Total Requests For Certifications On Hand, Disposed Of^{a/} and Allowed^{b/}
June 2004 - December 2010**

SEMI-ANNUAL PERCENT CHANGE

		Jul - Dec	% Chg	Jan - Jun	% Chg
03/04	On Hand	1,392	-19.5%	1,529	9.8%
	Disposed Of	1,097	-21.1%	1,177	7.3%
	Allowed	554	-30.5%	704	27.1%
04/05	On Hand	1,441	-5.8%	1,351	-6.2%
	Disposed Of	1,078	-8.4%	1,001	-7.1%
	Allowed	667	-5.3%	604	-9.4%
05/06	On Hand	971	-28.1%	1,143	17.7%
	Disposed Of	750	-25.1%	845	12.7%
	Allowed	445	-26.3%	489	9.9%
06/07	On Hand	1,004	-12.2%	1,123	11.9%
	Disposed Of	699	-17.3%	796	13.9%
	Allowed	390	-20.2%	517	32.6%
07/08	On Hand	1,050	-6.5%	1,113	6.0%
	Disposed Of	719	-9.7%	761	5.8%
	Allowed	473	-8.5%	517	9.3%
08/09	On Hand	1,073	-3.6%	1,175	9.5%
	Disposed Of	692	-9.1%	738	6.6%
	Allowed	445	-13.9%	517	16.2%
09/10	On Hand	1,223	4.1%	1,347	10.1%
	Disposed Of	818	10.8%	1,034	26.4%
	Allowed	546	5.6%	675	23.6%
10/11	On Hand	1,377	2.2%		
	Disposed Of	1,025	-0.9%		
	Allowed	760	12.6%		

● **Total On Hand:**

The number increased by 2.2% between June 2010 and December 2010
The number increased by 12.6% from December 2009 to December 2010

● **Disposed Of:**

The number decreased by 0.9% between June 2010 and December 2010
The number increased by 25.3% from December 2009 to December 2010

● **Allowed:**

The number increased by 12.6% between June 2010 and December 2010
The number increased by 39.2% from December 2009 to December 2010

^{a/} Allowed, denied, withdrawn/cancelled.

^{b/} Certified to SSA.

Source: ABD 216