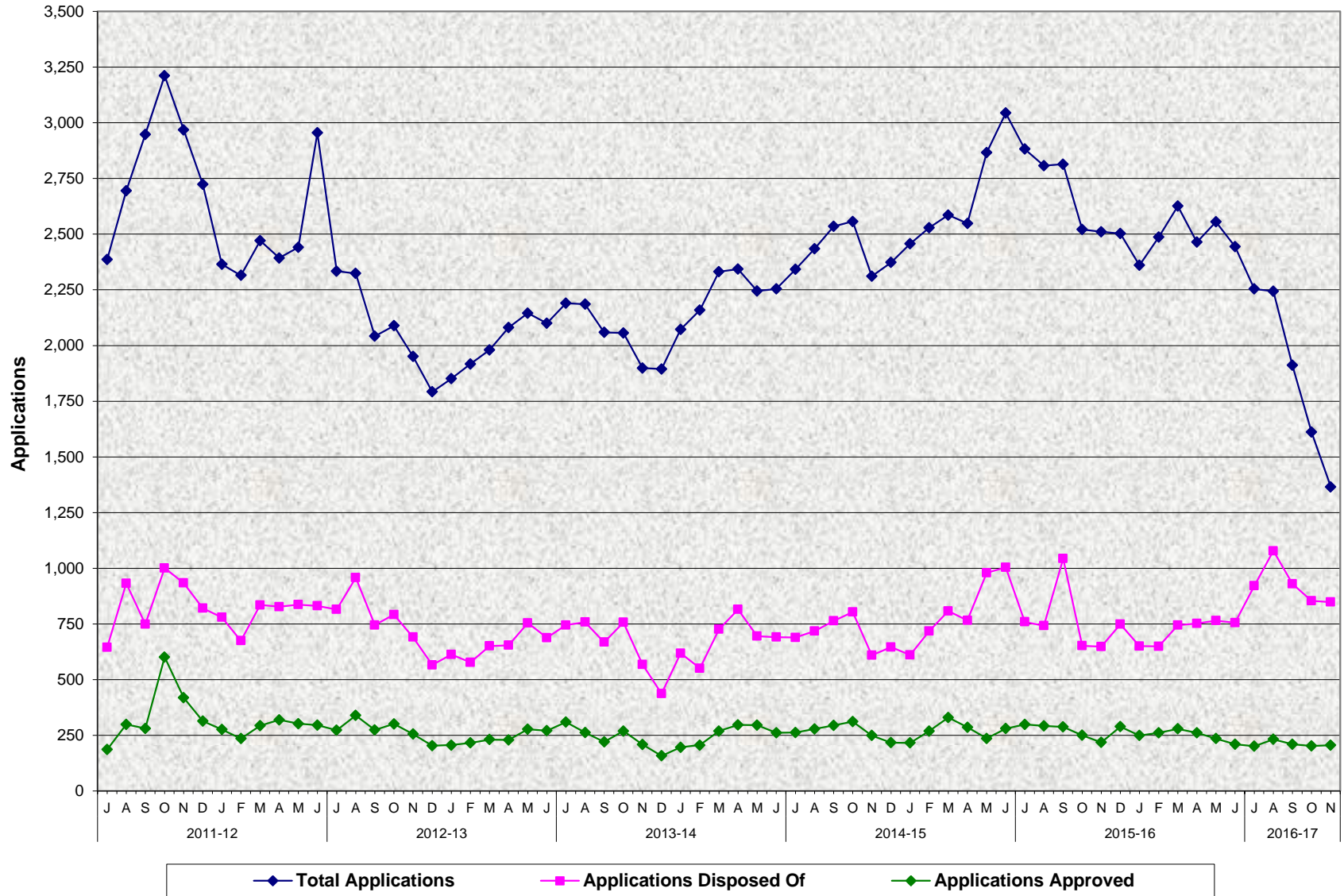


Cash Assistance Program for Immigrants (CAPI) Total Applications, Applications Disposed of ^{a/} and Applications Approved July 2011 - November 2016



^{a/} Applications approved, restored, denied/withdrawn and other approvals.
Source: CA 1037 (Items 3, 4 and 4a)

Cash Assistance Program for Immigrants (CAPI)
Total Applications, Applications Disposed of ^{a/} and Applications Approved
July 2011 - November 2016

MONTHLY PERCENT CHANGE

		Jul	% Chg	Aug	% Chg	Sep	% Chg	Oct	% Chg	Nov	% Chg	Dec	% Chg	Jan	% Chg	Feb	% Chg	Mar	% Chg	Apr	% Chg	May	% Chg	Jun	% Chg
11/12	Total Apps.	2,386		2,695	13.0%	2,948	9.4%	3,211	8.9%	2,968	-7.6%	2,724	-8.2%	2,365	-13.2%	2,315	-2.1%	2,471	6.7%	2,393	-3.2%	2,441	2.0%	2,955	21.1%
	Apps. Disp. Of	645		932	44.5%	749	-19.6%	1,001	33.6%	934	-6.7%	821	-12.1%	780	-5.0%	675	-13.5%	835	23.7%	827	-1.0%	837	1.2%	831	-0.7%
	Apps. Appvd.	186		299	60.8%	281	-6.0%	601	113.9%	419	-30.3%	314	-25.1%	276	-12.1%	235	-14.9%	293	24.7%	319	8.9%	302	-5.3%	296	-2.0%
12/13	Total Apps.	2,334	-21.0%	2,324	-0.4%	2,042	-12.1%	2,089	2.3%	1,951	-6.6%	1,792	-8.1%	1,851	3.3%	1,917	3.6%	1,980	3.3%	2,081	5.1%	2,145	3.1%	2,100	-2.1%
	Apps. Disp. Of	815	-1.9%	958	17.5%	745	-22.2%	792	6.3%	691	-12.8%	566	-18.1%	613	8.3%	577	-5.9%	651	12.8%	654	0.5%	754	15.3%	688	-8.8%
	Apps. Appvd.	273	-7.8%	339	24.2%	274	-19.2%	301	9.9%	256	-15.0%	203	-20.7%	206	1.5%	216	4.9%	231	6.9%	229	-0.9%	277	21.0%	271	-2.2%
13/14	Total Apps.	2,190	4.3%	2,186	-0.2%	2,059	-5.8%	2,056	-0.1%	1,899	-7.6%	1,894	-0.3%	2,072	9.4%	2,159	4.2%	2,332	8.0%	2,343	0.5%	2,245	-4.2%	2,254	0.4%
	Apps. Disp. Of	745	8.3%	758	1.7%	668	-11.9%	757	13.3%	568	-25.0%	437	-23.1%	618	41.4%	551	-10.8%	726	31.8%	815	12.3%	695	-14.7%	691	-0.6%
	Apps. Appvd.	309	14.0%	262	-15.2%	220	-16.0%	269	22.3%	209	-22.3%	158	-24.4%	196	24.1%	206	5.1%	269	30.6%	297	10.4%	296	-0.3%	261	-11.8%
14/15	Total Apps.	2,342	3.9%	2,434	3.9%	2,535	4.1%	2,557	0.9%	2,311	-9.6%	2,373	2.7%	2,457	3.5%	2,529	2.9%	2,586	2.3%	2,548	-1.5%	2,866	12.5%	3,044	6.2%
	Apps. Disp. Of	689	-0.3%	718	4.2%	764	6.4%	803	5.1%	609	-24.2%	646	6.1%	611	-5.4%	718	17.5%	808	12.5%	766	-5.2%	979	27.8%	1,004	2.6%
	Apps. Appvd.	262	0.4%	278	6.1%	294	5.8%	312	6.1%	249	-20.2%	217	-12.9%	216	-0.5%	269	24.5%	330	22.7%	286	-13.3%	236	-17.5%	280	18.6%
15/16	Total Apps.	2,882	-5.3%	2,807	-2.6%	2,814	0.2%	2,521	-10.4%	2,511	-0.4%	2,503	-0.3%	2,360	-5.7%	2,487	5.4%	2,626	5.6%	2,464	-6.2%	2,555	3.7%	2,444	-4.3%
	Apps. Disp. Of	759	-24.4%	742	-2.2%	1,043	40.6%	652	-37.5%	648	-0.6%	749	15.6%	650	-13.2%	649	-0.2%	744	14.6%	752	1.1%	765	1.7%	755	-1.3%
	Apps. Appvd.	299	6.8%	292	-2.3%	288	-1.4%	250	-13.2%	218	-12.8%	289	32.6%	249	-13.8%	261	4.8%	279	6.9%	261	-6.5%	235	-10.0%	210	-10.6%
16/17	Total Apps.	2,254	-7.8%	2,244	-0.4%	1,911	-14.8%	1,611	-15.7%	1,365	-15.3%														
	Apps. Disp. Of	921	22.0%	1,078	17.0%	930	-13.7%	854	-8.2%	848	-0.7%														
	Apps. Appvd.	201	-4.3%	232	15.4%	210	-9.5%	202	-3.8%	205	1.5%														

TRENDS

● **Total Applications:**

The number of applications decreased 15.27% between October 2016 and November 2016.
The number of applications decreased 45.64% between November 2015 and November 2016.

● **Applications Disposed Of:**

The number of applications decreased 0.70% between October 2016 and November 2016.
The number of applications increased 30.86% between November 2015 and November 2016.

● **Applications Approved:**

The number of applications increased 1.49% between October 2016 and November 2016.
The number of applications decreased 5.96% between November 2015 and November 2016.