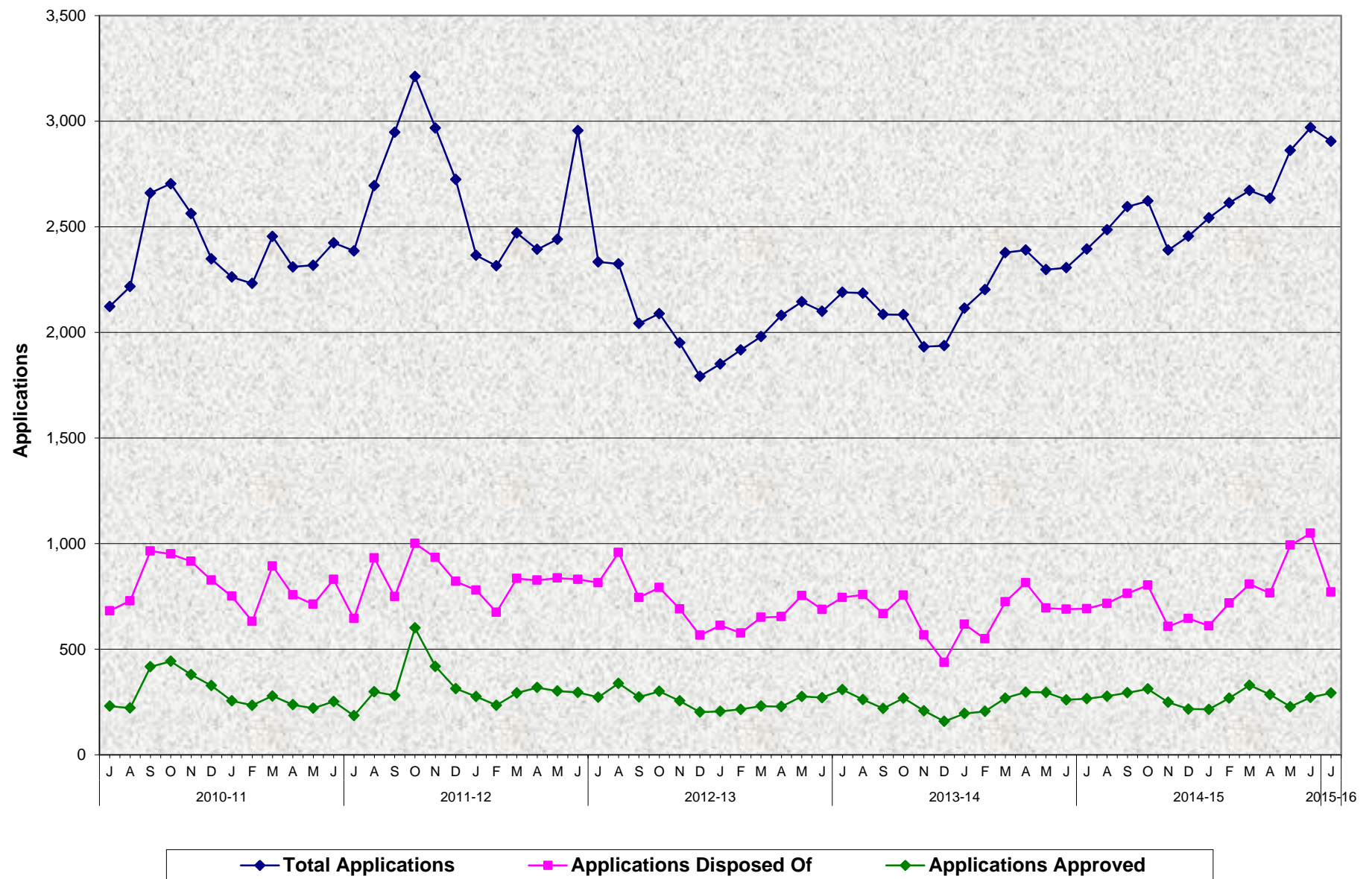


### Cash Assistance Program for Immigrants (CAPI) Total Applications, Applications Disposed Of <sup>a/</sup> and Applications Approved July 2010 - July 2015



<sup>a/</sup> Applications approved, restored, denied/withdrawn and other approvals.  
Source: CA 1037 (Items 3, 4 and 4a)

**Cash Assistance Program for Immigrants (CAPI)**  
**Total Applications, Applications Disposed Of <sup>a/</sup> and Applications Approved**  
**July 2010 - July 2015**

**MONTHLY PERCENT CHANGE**

		Jul	% Chg	Aug	% Chg	Sep	% Chg	Oct	% Chg	Nov	% Chg	Dec	% Chg	Jan	% Chg	Feb	% Chg	Mar	% Chg	Apr	% Chg	May	% Chg	Jun	% Chg
10/11	Total Apps.	2,123		2,217	4.4%	2,660	20.0%	2,704	1.7%	2,563	-5.2%	2,348	-8.4%	2,262	-3.7%	2,232	-1.3%	2,454	9.9%	2,310	-5.9%	2,318	0.3%	2424	4.6%
	Apps. Disp. Of	682		729	6.9%	965	32.4%	951	-1.5%	916	-3.7%	827	-9.7%	751	-9.2%	632	-15.8%	894	41.5%	757	-15.3%	713	-5.8%	830	16.4%
	Apps. Appvd.	231		222	-3.9%	417	87.8%	443	6.2%	380	-14.2%	328	-13.7%	256	-22.0%	235	-8.2%	279	18.7%	238	-14.7%	221	-7.1%	253	14.5%
11/12	Total Apps.	2,386	-1.6%	2,695	13.0%	2,948	9.4%	3,211	8.9%	2,968	-7.6%	2,724	-8.2%	2,365	-13.2%	2,315	-2.1%	2,471	6.7%	2,393	-3.2%	2,441	2.0%	2,955	21.1%
	Apps. Disp. Of	645	-22.3%	932	44.5%	749	-19.6%	1,001	33.6%	934	-6.7%	821	-12.1%	780	-5.0%	675	-13.5%	835	23.7%	827	-1.0%	837	1.2%	831	-0.7%
	Apps. Appvd.	186	-26.5%	299	60.8%	281	-6.0%	601	113.9%	419	-30.3%	314	-25.1%	276	-12.1%	235	-14.9%	293	24.7%	319	8.9%	302	-5.3%	296	-2.0%
12/13	Total Apps.	2,334	-21.0%	2,324	-0.4%	2,042	-12.1%	2,089	2.3%	1,951	-6.6%	1,792	-8.1%	1,851	3.3%	1,917	3.6%	1,980	3.3%	2,081	-2.2%	2,145	3.1%	2,100	-2.1%
	Apps. Disp. Of	815	-1.9%	958	17.5%	745	-22.2%	792	6.3%	691	-12.8%	566	-18.1%	613	8.3%	577	-5.9%	651	12.8%	654	-26.5%	754	15.3%	688	-8.8%
	Apps. Appvd.	273	-7.8%	339	24.2%	274	-19.2%	301	9.9%	256	-15.0%	203	-20.7%	206	1.5%	216	4.9%	231	6.9%	229	7.7%	277	21.0%	271	-2.2%
13/14	Total Apps.	2,190	4.3%	2,186	-0.2%	2,085	-4.6%	2,084	0.0%	1,932	-7.3%	1,937	0.3%	2,115	9.2%	2,203	4.2%	2,378	7.9%	2,390	0.0%	2,297	-3.9%	2,306	0.4%
	Apps. Disp. Of	745	8.3%	758	1.7%	668	-11.9%	756	13.2%	568	-24.9%	438	-22.9%	618	41.1%	550	-11.0%	725	31.8%	815	0.0%	695	-14.7%	690	-0.7%
	Apps. Appvd.	309	14.0%	262	-15.2%	220	-16.0%	269	22.3%	209	-22.3%	159	-23.9%	196	23.3%	206	5.1%	269	30.6%	297	0.0%	296	-0.3%	261	-11.8%
14/15	Total Apps.	2,394	3.8%	2,486	3.8%	2,595	4.4%	2,622	1.0%	2,390	-8.8%	2,456	2.8%	2,542	3.5%	2,614	2.8%	2,672	2.2%	2,635	-1.4%	2,862	8.6%	2,970	3.8%
	Apps. Disp. Of	692	0.3%	717	3.6%	764	6.6%	803	5.1%	608	-24.3%	646	6.3%	611	-5.4%	719	17.7%	808	12.4%	766	-5.2%	993	29.6%	1,049	5.6%
	Apps. Appvd.	266	1.9%	278	4.5%	294	5.8%	312	6.1%	249	-20.2%	217	-12.9%	216	-0.5%	269	24.5%	330	22.7%	286	-13.3%	228	-20.3%	272	19.3%
15/16	Total Apps.	2,905	-2.2%	313	-89.2%	-	-100.0%	-	#DIV/0!	-	#DIV/0!	0	#DIV/0!	0	#DIV/0!	0	#DIV/0!	0	#DIV/0!	0	#DIV/0!	0	#DIV/0!	0	#DIV/0!
	Apps. Disp. Of	771	-26.5%																						
	Apps. Appvd.	293	7.7%																						

**TRENDS**

● **Total Applications:**

The number of applications decreased 2.2% between June 2015 and July 2015.  
The number of applications increased 21.3% between July 2014 and July 2015.

● **Applications Disposed Of:**

The number of applications decreased 26.5% between June 2015 and July 2015.  
The number of applications increased 11.4% between July 2014 and July 2015.

● **Applications Approved:**

The number of applications increased 7.7% between June 2015 and July 2015.  
The number of applications increased 10.2% between July 2014 and July 2015.