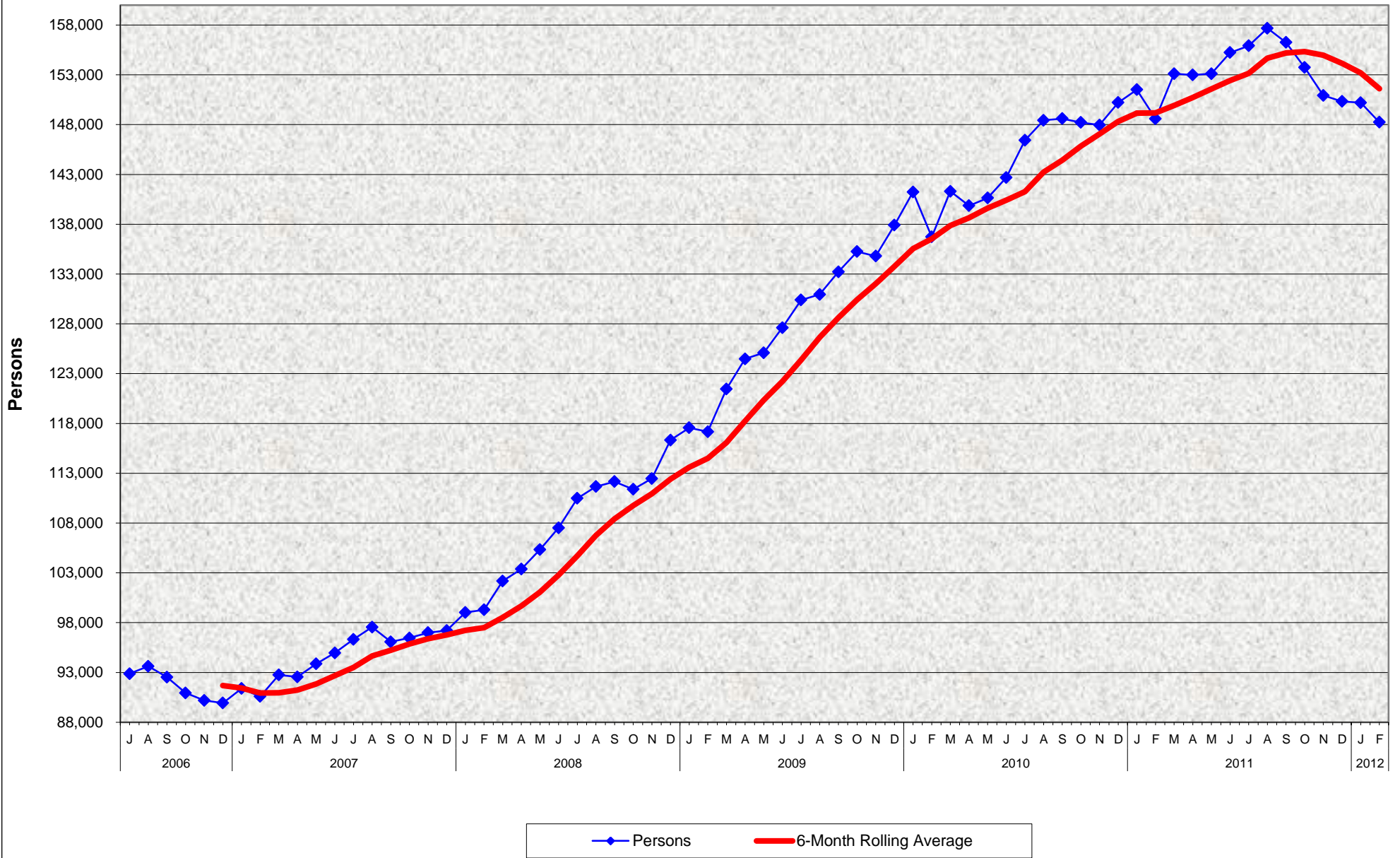


Adult Programs Number of Persons Receiving General Relief July 2006 - February 2012



Adult Programs
Number of Persons Receiving General Relief
July 2006 - February 2012

MONTHLY PERCENT CHANGE

FY		Jul	% Chg	Aug	% Chg	Sep	% Chg	Oct	% Chg	Nov	% Chg	Dec	% Chg	Jan	% Chg	Feb	% Chg	Mar	% Chg	Apr	% Chg	May	% Chg	Jun	% Chg
06/07	Total	92,876		93,621	0.8%	92,528	-1.2%	90,942	-1.7%	90,192	-0.8%	89,935	-0.3%	91,390	1.6%	90,593	-0.9%	92,745	2.4%	92,549	-0.2%	93,860	1.4%	94,956	1.2%
07/08	Total	96,320	1.4%	97,555	1.3%	96,073	-1.5%	96,463	0.4%	96,997	0.6%	97,211	0.2%	99,024	1.9%	99,288	0.3%	102,184	2.9%	103,372	1.2%	105,340	1.9%	107,515	2.1%
08/09	Total	110,482	2.8%	111,659	1.1%	112,160	0.4%	111,387	-0.7%	112,472	1.0%	116,333	3.4%	117,569	1.1%	117,166	-0.3%	121,461	3.7%	124,474	2.5%	125,092	0.5%	127,611	2.0%
09/10	Total	130,397	2.2%	130,953	0.4%	133,227	1.7%	135,255	1.5%	134,803	-0.3%	137,913	2.3%	141,241	2.4%	136,727	-3.2%	141,302	3.3%	139,864	-1.0%	140,632	0.5%	142,695	1.5%
10/11	Total	146,426	2.6%	148,432	1.4%	148,605	0.1%	148,224	-0.3%	147,957	-0.2%	150,216	1.5%	151,514	0.9%	148,592	-1.9%	153,116	3.0%	152,983	-0.1%	153,111	0.1%	155,231	1.4%
11/12	Total	155,918	0.4%	157,671	1.1%	156,262	-0.9%	153,741	-1.6%	150,935	-1.8%	150,336	-0.4%	150,205	-0.1%	148,237	-1.3%								

TRENDS

- Number of persons receiving General Relief decreased by 1.3% between January 2012 and February 2012.
- Number of persons receiving General Relief decreased by 0.2% between February 2011 and February 2012.