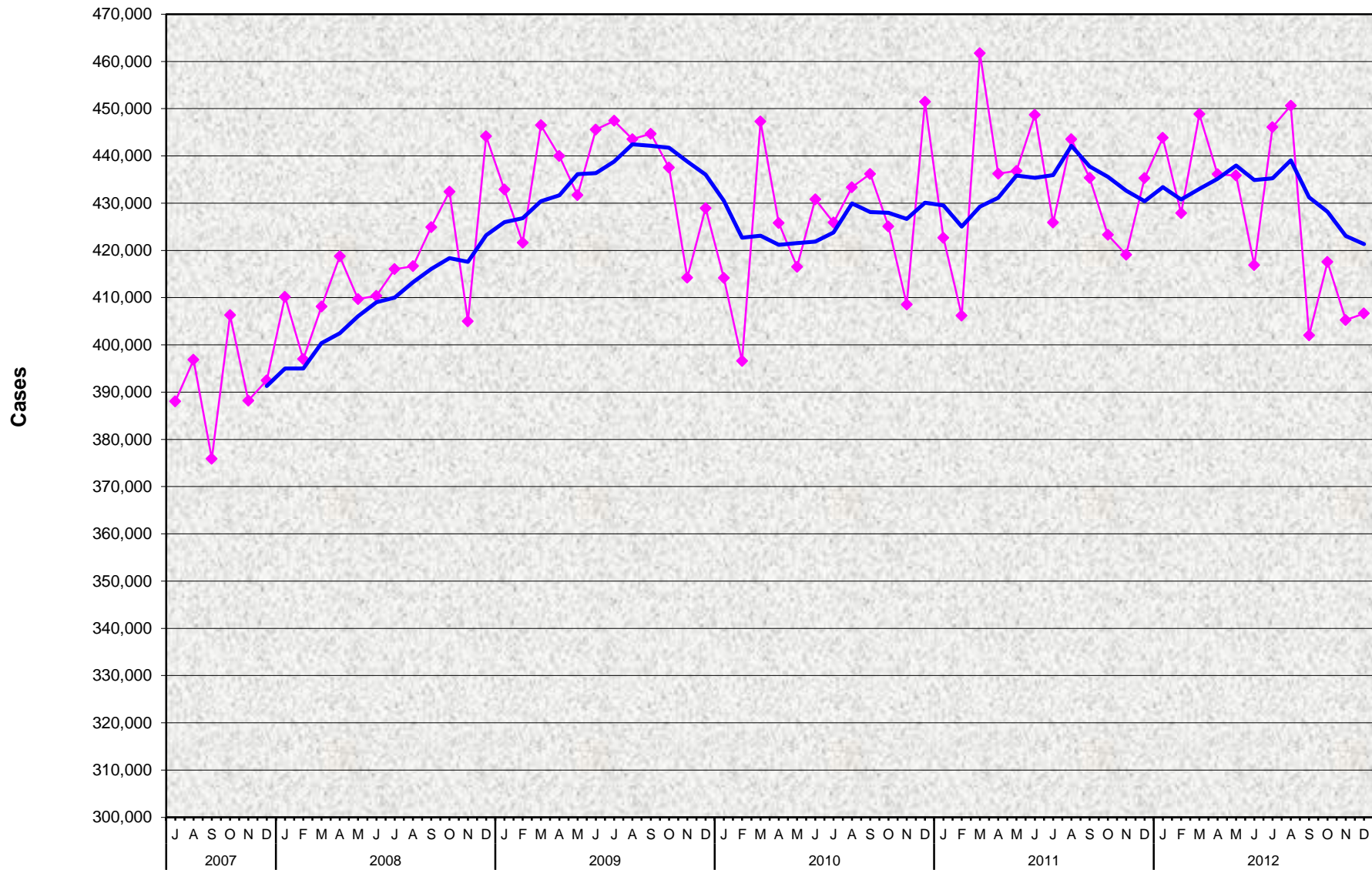


In-Home Supportive Services (IHSS) Paid Cases July 2007 - December 2012



**In-Home Supportive Services (IHSS)
Paid Cases
July 2007 - December 2012**

MONTHLY PERCENT CHANGE

FY	Jul	% Chg	Aug	% Chg	Sep	% Chg	Oct	% Chg	Nov	% Chg	Dec	% Chg	Jan	% Chg	Feb	% Chg	Mar	% Chg	Apr	% Chg	May	% Chg	Jun	% Chg
07/08	388,047		396,830	2.3%	375,904	-5.3%	406,286	8.1%	388,221	-4.4%	392,478	1.1%	410,173	4.5%	397,002	-3.2%	408,112	2.8%	418,737	2.6%	409,698	-2.2%	410,387	0.2%
08/09	416,043	1.4%	416,650	0.1%	424,924	2.0%	432,448	1.8%	404,992	-6.3%	444,133	9.7%	432,869	-2.5%	421,637	-2.6%	446,490	5.9%	439,975	-1.5%	431,682	-1.9%	445,584	3.2%
09/10	447,443	0.4%	443,536	-0.9%	444,684	0.3%	437,522	-1.6%	414,236	-5.3%	428,930	3.5%	414,193	-3.4%	396,611	-4.2%	447,277	12.8%	425,774	-4.8%	416,526	-2.2%	430,816	3.4%
10/11	425,891	-1.1%	433,376	1.8%	436,190	0.6%	425,086	-2.5%	408,540	-3.9%	451,471	10.5%	422,644	-6.4%	406,205	-3.9%	461,710	13.7%	436,248	-5.5%	436,804	0.1%	448,715	2.7%
11/12	425,884	-5.1%	443,519	4.1%	435,328	-1.8%	423,290	-2.8%	419,080	-1.0%	435,316	3.9%	443,834	2.0%	427,864	-3.6%	448,839	4.9%	436,125	-2.8%	435,863	-0.1%	416,862	-4.4%
12/13	446,095	7.0%	450,626	1.0%	402,002	-10.8%	417,552	3.9%	405,270	-2.9%	406,645	0.3%												

TRENDS

- In-Home Paid Cases increased 0.3% between November 2012 and December 2012.
- In-Home Paid Cases decreased 6.6% between December 2011 and December 2012.