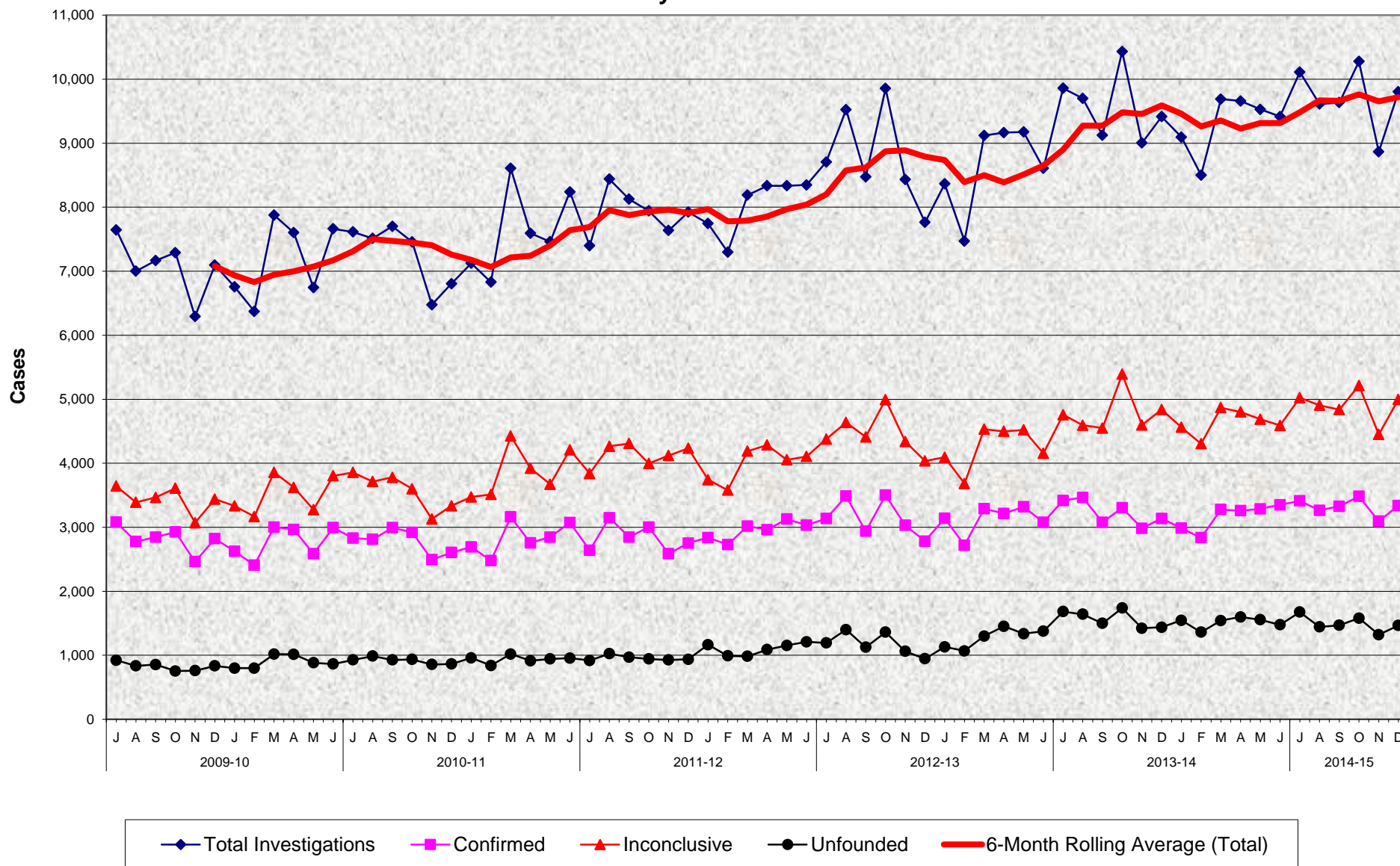


Adult Protective Services (APS) Completed Investigations July 2009 - December 2014



**Adult Protective Services (APS)
Completed Investigations
July 2009 - December 2014**

MONTHLY PERCENT CHANGE

FY		Jul	% Chg	Aug	% Chg	Sep	% Chg	Oct	% Chg	Nov	% Chg	Dec	% Chg	Jan	% Chg	Feb	% Chg	Mar	% Chg	Apr	% Chg	May	% Chg	Jun	% Chg
09/10	Total	7,646		7,001	-8.4%	7,166	2.4%	7,290	1.7%	6,291	-13.7%	7,096	12.8%	6,757	-4.8%	6,372	-5.7%	7,878	23.6%	7,603	-3.5%	6,743	-11.3%	7,662	13.6%
	Confirmed	3,080		2,777	-9.8%	2,846	2.5%	2,926	2.8%	2,462	-15.9%	2,822	14.6%	2,625	-7.0%	2,406	-8.3%	3,002	24.8%	2,965	-1.2%	2,586	-12.8%	2,994	15.8%
	Inconclusive	3,644		3,389	-7.0%	3,465	2.2%	3,610	4.2%	3,070	-15.0%	3,440	12.1%	3,333	-3.1%	3,167	-5.0%	3,858	21.8%	3,623	-6.1%	3,275	-9.6%	3,804	16.2%
	Unfounded	922		835	-9.4%	855	2.4%	754	-11.8%	759	0.7%	834	9.9%	799	-4.2%	799	0.0%	1,018	27.4%	1,015	-0.3%	882	-13.1%	864	-2.0%
10/11	Total	7,614	-0.6%	7,513	-1.3%	7,701	2.5%	7,456	-3.2%	6,477	-13.1%	6,805	5.1%	7,125	4.7%	6,830	-4.1%	8,607	26.0%	7,593	-11.8%	7,461	-1.7%	8,239	10.4%
	Confirmed	2,831	-5.4%	2,811	-0.7%	2,993	6.5%	2,921	-2.4%	2,492	-14.7%	2,605	4.5%	2,692	3.3%	2,478	-7.9%	3,162	27.6%	2,756	-12.8%	2,846	3.3%	3,074	8.0%
	Inconclusive	3,856	1.4%	3,715	-3.7%	3,780	1.7%	3,600	-4.8%	3,129	-13.1%	3,336	6.6%	3,474	4.1%	3,512	1.1%	4,426	26.0%	3,922	-11.4%	3,672	-6.4%	4,210	14.7%
	Unfounded	927	7.3%	987	6.5%	928	-6.0%	935	0.8%	856	-8.4%	864	0.9%	959	11.0%	840	-12.4%	1,019	21.3%	915	-10.2%	943	3.1%	955	1.3%
11/12	Total	7,398	-10.2%	8,439	14.1%	8,125	-3.7%	7,942	-2.3%	7,636	-3.9%	7,923	3.8%	7,744	-2.3%	7,299	-5.7%	8,189	12.2%	8,335	1.8%	8,335	0.0%	8,348	0.2%
	Confirmed	2,640	-14.1%	3,149	19.3%	2,846	-9.6%	3,003	5.5%	2,587	-13.9%	2,752	6.4%	2,838	3.1%	2,728	-3.9%	3,017	10.6%	2,961	-1.9%	3,127	5.6%	3,033	-3.0%
	Inconclusive	3,839	-8.8%	4,265	11.1%	4,308	1.0%	3,996	-7.2%	4,122	3.2%	4,234	2.7%	3,742	-11.6%	3,580	-4.3%	4,188	2.3%	4,285	2.3%	4,055	-5.4%	4,106	1.3%
	Unfounded	919	-3.8%	1,025	11.5%	1,025	-5.3%	943	-2.9%	927	-1.7%	937	1.1%	1,164	24.2%	991	-14.9%	984	-0.7%	1,089	10.7%	1,153	5.9%	1,209	4.9%
12/13	Total	8,706	4.3%	9,525	9.4%	8,473	-11.0%	9,855	16.3%	8,434	-14.4%	7,764	-7.9%	8,365	7.7%	7,470	-10.7%	9,120	22.1%	9,166	0.5%	9,176	0.1%	8,608	-6.2%
	Confirmed	3,136	3.4%	3,487	11.2%	2,938	-15.7%	3,501	19.2%	3,031	-13.4%	2,783	-8.2%	3,140	12.8%	2,719	-13.4%	3,289	21.0%	3,215	-2.2%	3,318	3.2%	3,077	-7.3%
	Inconclusive	4,378	6.6%	4,637	5.9%	4,410	-4.9%	4,993	13.2%	4,340	-13.1%	4,035	-7.0%	4,093	1.4%	3,683	-10.0%	4,532	23.1%	4,499	-0.7%	4,521	0.5%	4,155	-8.1%
	Unfounded	1,192	-1.4%	1,401	17.5%	1,125	-19.7%	1,361	21.0%	1,063	-21.9%	946	-11.0%	1,132	19.7%	1,068	-5.7%	1,299	21.6%	1,452	11.8%	1,337	-7.9%	1,376	2.9%
13/14	Total	9,859	14.5%	9,700	-1.6%	9,125	-5.9%	10,432	14.3%	9,003	-13.7%	9,414	4.6%	9,095	-3.4%	8,501	-6.5%	9,688	14.0%	9,658	-0.3%	9,528	-1.3%	9,416	-1.2%
	Confirmed	3,418	11.1%	3,465	1.4%	3,077	-11.2%	3,303	7.3%	2,984	-9.7%	3,137	5.1%	2,986	-4.8%	2,836	-5.0%	3,278	15.6%	3,258	-0.6%	3,286	0.9%	3,350	1.9%
	Inconclusive	4,759	14.5%	4,594	-3.5%	4,549	-1.0%	5,391	18.5%	4,597	-14.7%	4,839	5.3%	4,563	-5.7%	4,304	-5.7%	4,868	13.1%	4,801	-1.4%	4,687	-2.4%	4,590	-2.1%
	Unfounded	1,682	22.2%	1,641	-2.4%	1,499	-8.7%	1,738	15.9%	1,422	-18.2%	1,438	1.1%	1,546	7.5%	1,361	-12.0%	1,542	13.3%	1,599	3.7%	1,555	-2.8%	1,476	-5.1%
14/15	Total	10,111	7.4%	9,613	-4.9%	9,634	0.2%	10,277	6.7%	8,866	-13.7%	9,803	10.6%												
	Confirmed	3,412	1.9%	3,264	-4.3%	3,327	1.9%	3,483	4.7%	3,095	-11.1%	3,339	7.9%												
	Inconclusive	5,024	9.5%	4,906	-2.3%	4,838	-1.4%	5,214	7.8%	4,450	-14.7%	4,998	12.3%												
	Unfounded	1,675	13.5%	1,443	-13.9%	1,469	1.8%	1,580	7.6%	1,321	-16.4%	1,466	11.0%												

TRENDS

- Completed Investigations increased 10.6% between November 2014 and December 2014**
 7.9% increase in Confirmed cases
 12.3% increase in Inconclusive cases
 11.0% increase in Unfounded cases
- Completed Investigations increased 4.1% between December 2013 and December 2014**
 6.4% increase in Confirmed cases
 3.3% increase in Inconclusive cases
 1.9% increase in Unfounded cases