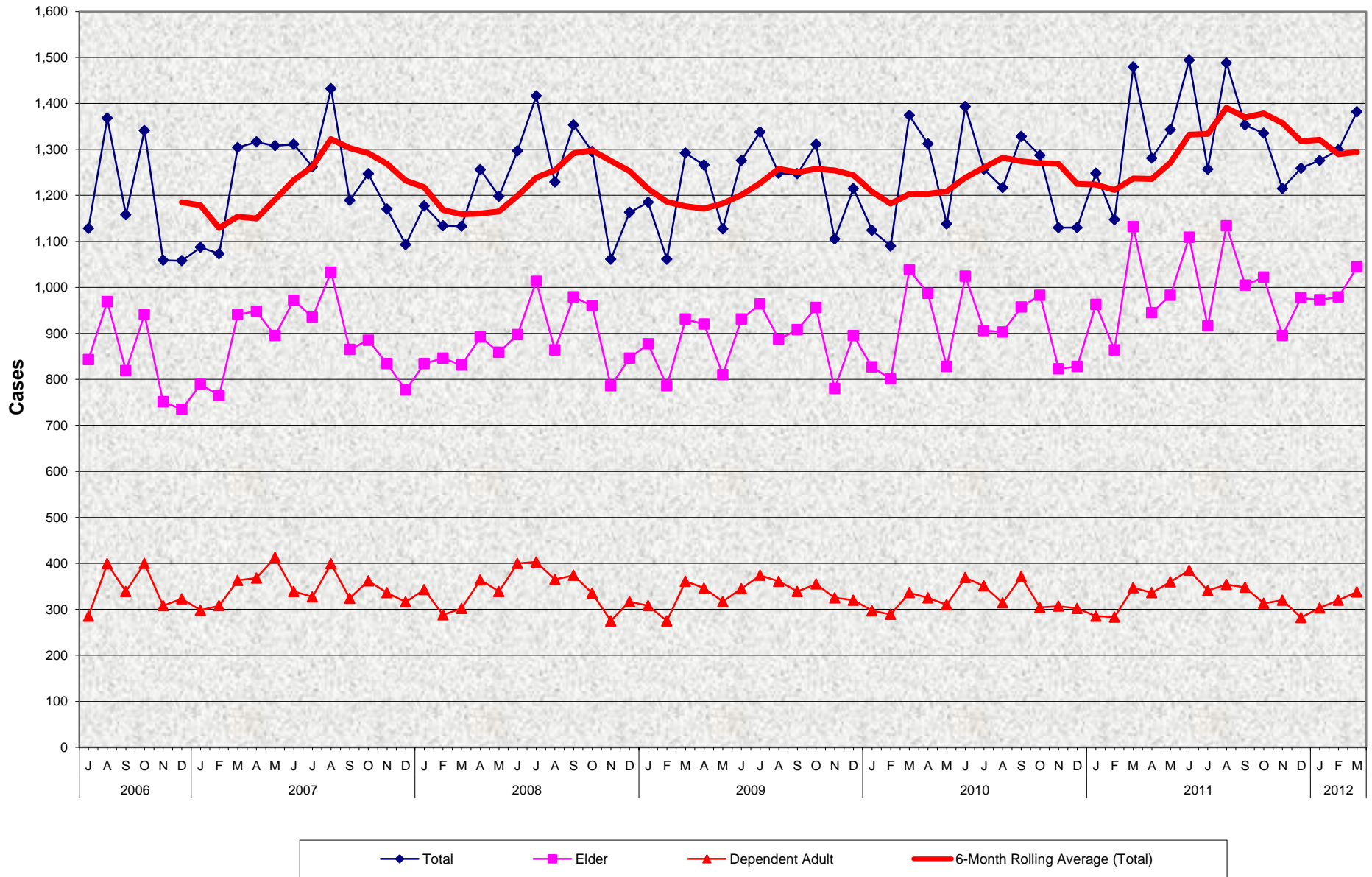


Adult Protective Services (APS) Confirmed Abuse Perpetrated By Others Cases July 2006 - March 2012



Adult Protective Services (APS) Confirmed Abuse Perpetrated By Others Cases July 2006 - March 2012

MONTHLY PERCENT CHANGE

FY		Jul	% Chg	Aug	% Chg	Sep	% Chg	Oct	% Chg	Nov	% Chg	Dec	% Chg	Jan	% Chg	Feb	% Chg	Mar	% Chg	Apr	% Chg	May	% Chg	Jun	% Chg
06/07	Total	1,128	-10.7%	1,368	21.3%	1,158	-15.4%	1,341	15.8%	1,059	-21.0%	1,058	-0.1%	1,087	2.7%	1,073	-1.3%	1,304	21.5%	1,316	0.9%	1,308	-0.6%	1,311	0.2%
	Elder	843	-6.5%	969	14.9%	819	-15.5%	941	14.9%	751	-20.2%	735	-2.1%	789	7.3%	765	-3.0%	941	23.0%	948	0.7%	895	-5.6%	972	8.6%
	Dep. Adult	285	-21.1%	399	40.0%	339	-15.0%	400	18.0%	308	-23.0%	323	4.9%	298	-7.7%	308	3.4%	363	17.9%	368	1.4%	413	12.2%	339	-17.9%
07/08	Total	1,262	-3.7%	1,432	13.5%	1,189	-17.0%	1,247	4.9%	1,170	-6.2%	1,093	-6.6%	1,177	7.7%	1,134	-3.7%	1,133	-0.1%	1,256	10.9%	1,198	-4.6%	1,297	8.3%
	Elder	935	-3.8%	1,033	10.5%	865	-16.3%	885	2.3%	834	-5.8%	777	-6.8%	834	7.3%	846	1.4%	831	-1.8%	892	7.3%	859	-3.7%	897	4.4%
	Dep. Adult	327	-3.5%	399	22.0%	324	-18.8%	362	11.7%	336	-7.2%	316	-6.0%	343	8.5%	288	-16.0%	302	4.9%	364	20.5%	339	-6.9%	400	18.0%
08/09	Total	1,416	9.2%	1,229	-13.2%	1,353	10.1%	1,295	-4.3%	1,061	-18.1%	1,163	9.6%	1,185	1.9%	1,061	-10.5%	1,292	21.8%	1,266	-2.0%	1,127	-11.0%	1,276	13.2%
	Elder	1,013	12.9%	864	-14.7%	979	13.3%	960	-1.9%	786	-18.1%	846	7.6%	877	3.7%	786	-10.4%	931	18.4%	920	-1.2%	810	-12.0%	931	14.9%
	Dep. Adult	403	0.8%	365	-9.4%	374	2.5%	335	-10.4%	275	-17.9%	317	15.3%	308	-2.8%	275	-10.7%	361	31.3%	346	-4.2%	317	-8.4%	345	8.8%
09/10	Total	1,338	4.9%	1,248	-6.7%	1,247	-0.1%	1,311	5.1%	-1,105	-15.7%	1,215	10.0%	1,124	-7.5%	1,090	-3.0%	1,374	26.1%	1,312	-4.5%	1,138	-13.3%	1,393	22.4%
	Elder	964	3.5%	887	-8.0%	908	2.4%	956	5.3%	780	-18.4%	895	14.7%	827	-7.6%	801	-3.1%	1,038	29.6%	987	-4.9%	828	-16.1%	1,024	23.7%
	Dep. Adult	374	8.4%	361	-3.5%	339	-6.1%	355	4.7%	325	-8.5%	320	-1.5%	297	-7.2%	289	-2.7%	336	16.3%	325	-3.3%	310	-4.6%	369	19.0%
10/11	Total	1,257	-9.8%	1,217	-3.2%	1,328	9.1%	1,287	-3.1%	1,130	-12.2%	1,130		1,248	10.4%	1,147	-8.1%	1,479	28.9%	1,281	-13.4%	1,343	4.8%	1,494	11.2%
	Elder	906	-11.5%	903	-0.3%	957	6.0%	983	2.7%	823	-16.3%	828	0.6%	963	16.3%	864	-10.3%	1,132	31.0%	945	-16.5%	983	4.0%	1,109	12.8%
	Dep. Adult	351	-4.9%	314	-10.5%	371	18.2%	304	-18.1%	307	1.0%	302	-1.6%	285	-5.6%	283	-0.7%	347	22.6%	336	-3.2%	360	7.1%	385	6.9%
11/12	Total	1,257	-15.9%	1,488	18.4%	1,353	-9.1%	1,335	-1.3%	1,215	-9.0%	1,259	3.6%	1,276	1.4%	1,299	1.8%	1,382	6.4%						
	Elder	916	-17.4%	1,134	23.8%	1,005	-11.4%	1,022	1.7%	895	-12.4%	977	9.2%	973	-0.4%	979	0.6%	1,044	6.6%						
	Dep. Adult	341	-11.4%	354	3.8%	348	-1.7%	313	-10.1%	320	2.2%	282	-11.9%	303	7.4%	320	5.6%	338	5.6%						

TRENDS

- **Total Number of Abuse Perpetrated By Others cases increased 6.4% between February 2012 and March 2012**
6.6% increase in Elder cases
5.6% increase in Dependent Adult cases
- **Total Number of Abuse Perpetrated By Others cases decreased 6.6% between March 2011 and March 2012**
7.8% decrease in Elder cases
2.6% decrease in Dependent Adult cases