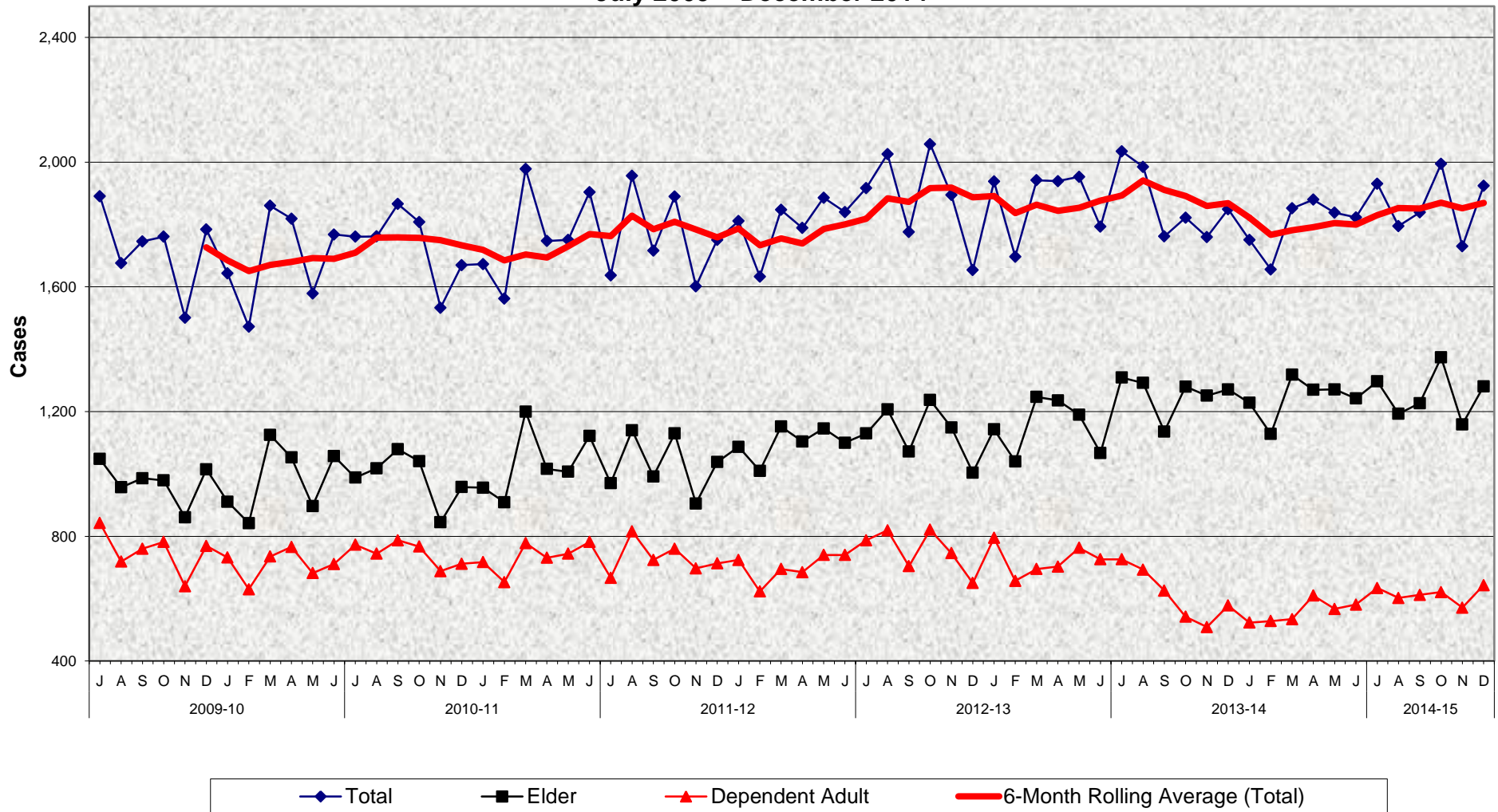


Adult Protective Services (APS) Confirmed Self Neglect Abuse Cases July 2009 - December 2014



**Adult Protective Services (APS)
Confirmed Self Neglect Abuse Cases
July 2009 - December 2014**

MONTHLY PERCENT CHANGE

FY		Jul	% Chg	Aug	% Chg	Sep	% Chg	Oct	% Chg	Nov	% Chg	Dec	% Chg	Jan	% Chg	Feb	% Chg	Mar	% Chg	Apr	% Chg	May	% Chg	Jun	% Chg
09/10	Total	1,891		1,676	-11.4%	1,746	-4.2%	1,761	-0.9%	1,501	14.8%	1,784	18.9%	1,643	-7.9%	1,472	-10.4%	1,860	26.4%	1,819	-2.2%	1,579	-13.2%	1,768	12.0%
	Elder	1,048		957	-8.7%	986	3.0%	979	-0.7%	861	-12.1%	1,015	17.9%	911	-10.2%	842	-7.6%	1,125	33.6%	1,053	-6.4%	897	-14.8%	1,057	17.8%
	Dep. Adult	843		719	-14.7%	760	5.7%	782	2.9%	640	-18.2%	769	20.2%	732	-4.8%	630	-13.9%	735	16.7%	766	4.2%	682	-11.0%	711	4.3%
10/11	Total	1,761	-0.4%	1,762	0.1%	1,866	5.9%	1,808	-3.1%	1,533	-15.2%	1,670	8.9%	1,673	0.2%	1,562	-6.6%	1,978	26.6%	1,747	-11.7%	1,751	0.2%	1,904	8.7%
	Elder	988	-6.5%	1,018	3.0%	1,079	6.0%	1,041	-3.5%	845	-18.8%	958	13.4%	956	-0.2%	909	-4.9%	1,200	32.0%	1,016	-15.3%	1,007	-0.9%	1,122	11.4%
	Dep. Adult	773	8.7%	744	-3.8%	787	5.8%	767	-2.5%	688	-10.3%	712	3.5%	717	0.7%	653	-8.9%	778	19.1%	731	-6.0%	744	1.8%	782	5.1%
11/12	Total	1,637	-14.0%	1,956	19.5%	1,716	-12.3%	1,890	10.1%	1,602	-15.2%	1,751	9.3%	1,811	3.4%	1,633	-9.8%	1,847	13.1%	1,789	-3.1%	1,886	5.4%	1,840	-2.4%
	Elder	970	-13.5%	1,140	17.5%	992	-13.0%	1,130	13.9%	905	-19.9%	1,038	14.7%	1,087	4.7%	1,010	-7.1%	1,152	14.1%	1,104	-4.2%	1,146	3.8%	1,100	-4.0%
	Dep. Adult	667	-14.7%	816	22.3%	724	-11.3%	760	5.0%	697	-8.3%	713	2.3%	724	1.5%	623	-14.0%	695	11.6%	685	-1.4%	740	8.0%	740	0.0%
12/13	Total	1,917	4.2%	2,026	5.7%	1,776	-12.3%	2,058	15.9%	1,895	-7.9%	1,654	-12.7%	1,938	17.2%	1,697	-12.4%	1,942	14.4%	1,939	-0.2%	1,953	0.7%	1,793	-8.2%
	Elder	1,130	2.7%	1,207	6.8%	1,072	-11.2%	1,237	15.4%	1,149	-7.1%	1,004	-12.6%	1,143	13.8%	1,040	-9.0%	1,247	19.9%	1,236	-0.9%	1,190	-3.7%	1,067	0.0%
	Dep. Adult	787	6.4%	819	4.1%	704	-14.0%	821	16.6%	746	-9.1%	650	-12.9%	795	22.3%	657	-17.4%	695	5.8%	703	1.2%	763	8.5%	726	4.1%
13/14	Total	2,035	13.5%	1,985	-2.5%	1,762	-11.2%	1,822	3.4%	1,760	-3.4%	1,849	5.1%	1,751	-5.3%	1,656	-5.4%	1,852	11.8%	1,880	1.5%	1,838	-2.2%	1,823	-0.8%
	Elder	1,309	22.7%	1,292	-1.3%	1,136	-12.1%	1,280	12.7%	1,251	-2.3%	1,271	1.6%	1,228	-3.4%	1,128	-8.1%	1,318	16.8%	1,270	-3.6%	1,271	0.1%	1,242	0.0%
	Dep. Adult	726	0.0%	693	-4.5%	626	-9.7%	542	-13.4%	509	-6.1%	578	13.6%	523	-9.5%	528	1.0%	534	1.1%	610	14.2%	567	-7.0%	581	2.5%
14/15	Total	1,931	5.9%	1,795	-7.0%	1,839	2.5%	1,995	8.5%	1,730	-13.3%	1,924	11.2%												
	Elder	1,297	4.4%	1,193	-8.0%	1,227	2.8%	1,374	12.0%	1,159	-15.6%	1,281	10.5%												
	Dep. Adult	634	9.1%	602	-5.0%	612	1.7%	621	1.5%	571	-8.1%	643	12.6%												

- **Total number of Self Neglect cases increased 11.2% between November 2014 and December 2014**
10.5% increase in Elder cases
12.6% increase in Dependent Adult cases
- **Total number of Self Neglect cases increased 4.1% between December 2013 and December 2014**
0.8% increase in Elder cases
11.2% increase in Dependent Adult cases