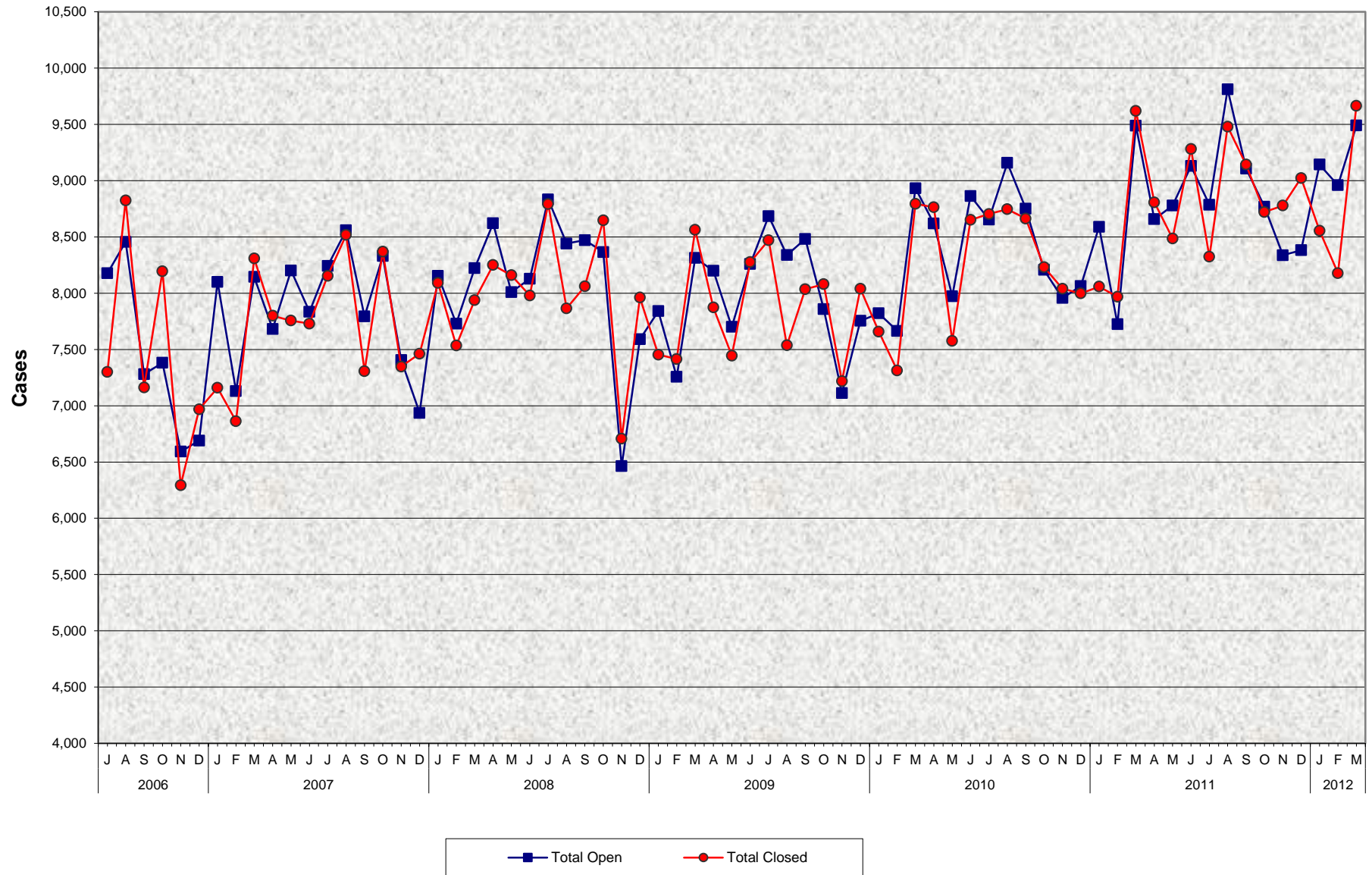


Adult Protective Services (APS) Open and Closed Cases July 2006- March 2012



**Adult Protective Services (APS)
Open and Closed Cases
July 2006 - March 2012**

MONTHLY PERCENT CHANGE

FY		Jul	% Chg	Aug	% Chg	Sep	% Chg	Oct	% Chg	Nov	% Chg	Dec	% Chg	Jan	% Chg	Feb	% Chg	Mar	% Chg	Apr	% Chg	May	% Chg	Jun	% Chg
06/07	Open	8,177	2.6%	8,456	3.4%	7,281	-13.9%	7,381	1.4%	6,592	-10.7%	6,690	1.5%	8,100	21.1%	7,130	-12.0%	8,144	14.2%	7,682	-5.7%	8,201	6.8%	7,835	-4.5%
	Closed	7,301	-0.5%	8,825	20.9%	7,161	-18.9%	8,195	14.4%	6,294	-23.2%	6,968	10.7%	7,159	2.7%	6,863	-4.1%	8,308	21.1%	7,800	-6.1%	7,756	-0.6%	7,730	-0.3%
07/08	Open	8,242	5.2%	8,558	3.8%	7,793	-8.9%	8,330	6.9%	7,406	-11.1%	6,936	-6.3%	8,154	17.6%	7,729	-5.2%	8,222	6.4%	8,621	4.9%	8,010	-7.1%	8,127	1.5%
	Closed	8,154	5.5%	8,518	4.5%	7,307	-14.2%	8,370	14.5%	7,348	-12.2%	7,462	1.6%	8,091	8.4%	7,534	-6.9%	7,939	5.4%	8,250	3.9%	8,160	-1.1%	7,980	-2.2%
08/09	Open	8,833	8.7%	8,441	-4.4%	8,471	0.4%	8,366	-1.2%	6,464	-22.7%	7,590	17.4%	7,841	3.3%	7,256	-7.5%	8,313	14.6%	8,199	-1.4%	-7,701	-6.1%	8,259	7.2%
	Closed	8,792	10.2%	7,865	-10.5%	8,060	2.5%	8,647	7.3%	6,708	-22.4%	7,961	18.7%	7,454	-6.4%	7,415	-0.5%	8,564	15.5%	7,873	-8.1%	7,445	-5.4%	8,276	11.2%
09/10	Open	8,684	5.1%	8,339	-4.0%	8,482	1.7%	7,859	-7.3%	7,112	-9.5%	7,754	9.0%	7,821	0.9%	7,665	-2.0%	8,932	16.5%	8,619	-3.5%	7,973	-7.5%	8,863	11.2%
	Closed	8,471	2.4%	7,537	-11.0%	8,036	6.6%	8,080	0.5%	7,219	-10.7%	8,040	11.4%	7,658	-4.8%	7,313	-4.5%	8,795	20.3%	8,763	-0.4%	7,576	-13.5%	8,651	14.2%
10/11	Open	8,654	-2.4%	9,158	5.8%	8,751	-4.4%	8,207	-6.2%	7,957	-3.0%	8,064	1.3%	8,590	6.5%	7,725	-10.1%	9,487	22.8%	8,658	-8.7%	8,778	1.4%	9,130	4.0%
	Closed	8,704	0.6%	8,746	0.5%	8,663	-0.9%	8,232	-5.0%	8,040	-2.3%	7,998	-0.5%	8,058	0.8%	7,969	-1.1%	9,620	20.7%	8,807	-8.5%	8,486	-3.6%	9,282	9.4%
11/12	Open	8,786	-3.8%	9,812	11.7%	9,107	-7.2%	8,769	-3.7%	8,337	-4.9%	8,382	0.5%	9,142	9.1%	8,959	-2.0%	9,490	5.9%						
	Closed	8,323	-10.3%	9,480	13.9%	9,143	-3.6%	8,721	-4.6%	8,778	0.7%	9,023	2.8%	8,555	-5.2%	8,178	-4.4%	9,666	18.2%						

TRENDS

- **Cases Opened increased 5.9% between February 2012 and March 2012**
4.8% increase in Elder cases
8.6% increase in Dependent Adult cases
- **Cases Opened increased 0.0% between March 2011 and March 2012**
0.6% decrease in Elder cases
1.5% increase in Dependent Adult cases
- **Cases Closed increased 18.2% between February 2012 and March 2012**
18.4% increase in Elder cases
17.7% increase in Dependent Adult cases
- **Cases Closed increased 0.5% between March 2011 and March 2012**
0.1% increase in Elder cases
1.3% increase in Dependent Adult cases