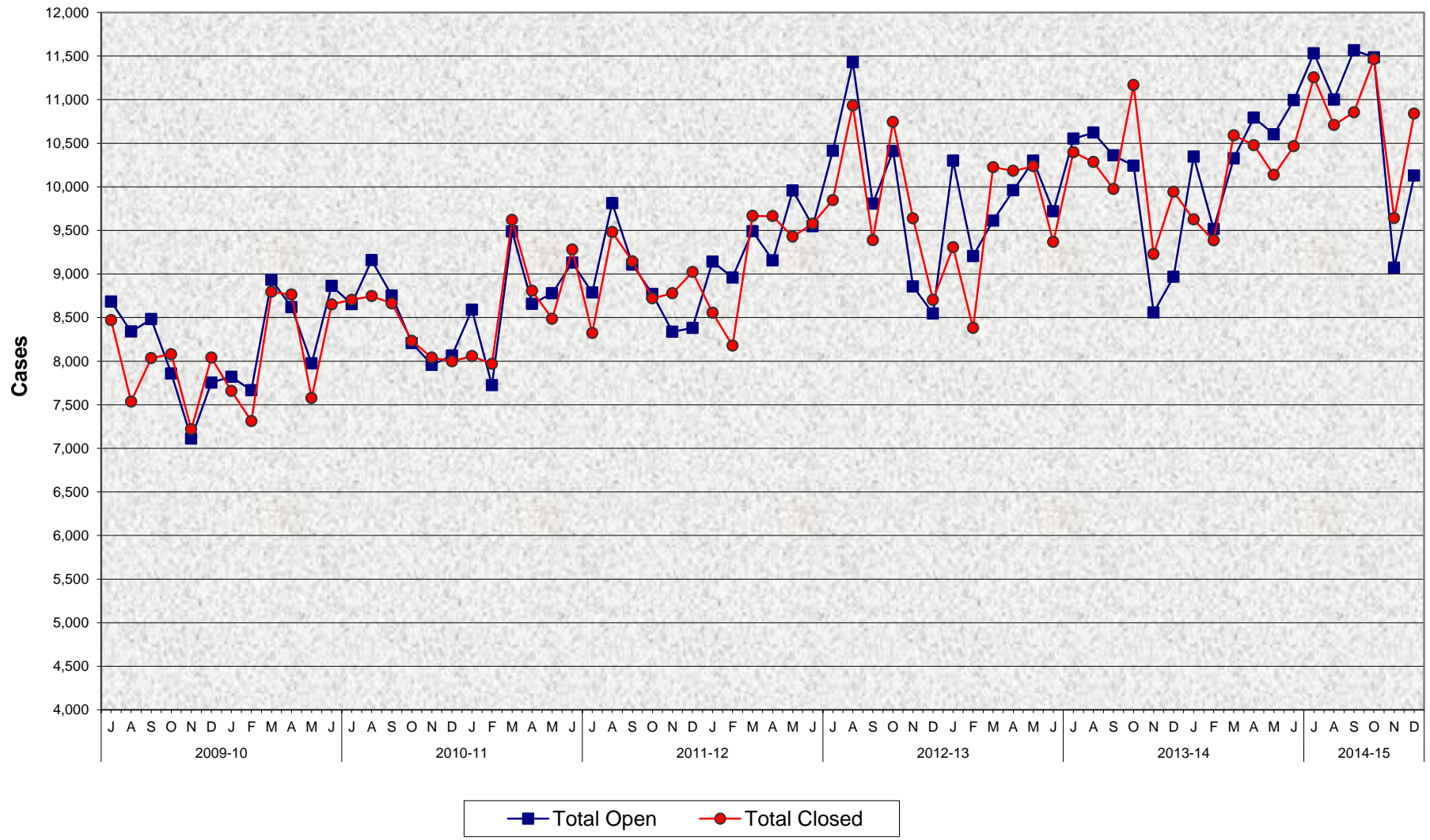


### Adult Protective Services (APS) Open and Closed Cases July 2009 - December 2014



**Adult Protective Services (APS)  
Open and Closed Cases  
July 2009 - December 2014**

**MONTHLY PERCENT CHANGE**

FY		Jul	% Chg	Aug	% Chg	Sep	% Chg	Oct	% Chg	Nov	% Chg	Dec	% Chg	Jan	% Chg	Feb	% Chg	Mar	% Chg	Apr	% Chg	May	% Chg	Jun	% Chg
09/10	Open	8,684		8,339	-4.0%	8,482	1.7%	7,859	-7.3%	7,112	-9.5%	7,754	9.0%	7,821	0.9%	7,665	-2.0%	8,932	16.5%	8,619	-3.5%	7,973	-7.5%	8,863	11.2%
	Closed	8,471		7,537	-11.0%	8,036	6.6%	8,080	0.5%	7,219	-10.7%	8,040	11.4%	7,658	-4.8%	7,313	-4.5%	8,795	20.3%	8,763	-0.4%	7,576	-13.5%	8,651	14.2%
10/11	Open	8,654	-2.4%	9,158	5.8%	8,751	-4.4%	8,207	-6.2%	7,957	-3.0%	8,064	1.3%	8,590	6.5%	7,725	-10.1%	9,487	22.8%	8,658	-8.7%	8,778	1.4%	9,130	4.0%
	Closed	8,704	0.6%	8,746	0.5%	8,663	-0.9%	8,232	-5.0%	8,040	-2.3%	7,998	-0.5%	8,058	0.8%	7,969	-1.1%	9,620	20.7%	8,807	-8.5%	8,486	-3.6%	9,282	9.4%
11/12	Open	8,786	-3.8%	9,812	11.7%	9,107	-7.2%	8,769	-3.7%	8,337	-4.9%	8,382	0.5%	9,142	9.1%	8,959	-2.0%	9,490	5.9%	9,156	-3.5%	9,958	8.8%	9,548	-4.1%
	Closed	8,323	-10.3%	9,480	13.9%	9,143	-3.6%	8,721	-4.6%	8,778	0.7%	9,023	2.8%	8,555	-5.2%	8,178	-4.4%	9,666	18.2%	9,663	0.0%	9,428	-2.4%	9,577	1.6%
12/13	Open	10,414	9.1%	11,429	9.7%	9,806	-14.2%	10,410	6.2%	8,858	-14.9%	8,546	-3.5%	10,299	20.5%	9,206	-10.6%	9,612	4.4%	9,960	3.6%	10,299	3.4%	9,719	-5.6%
	Closed	9,848	2.8%	10,934	11.0%	9,388	-14.1%	10,745	14.5%	9,637	-10.3%	8,704	-9.7%	9,308	6.9%	8,380	-10.0%	10,225	22.0%	10,183	-0.4%	10,235	0.5%	9,367	-8.5%
13/14	Open	10,552	8.6%	10,621	0.7%	10,360	-2.5%	10,243	-1.1%	8,559	-16.4%	8,968	4.8%	10,347	15.4%	9,516	-8.0%	10,325	8.5%	10,793	4.5%	10,602	-1.8%	10,995	3.7%
	Closed	10,397	11.0%	10,284	-1.1%	9,976	-3.0%	11,167	11.9%	9,229	-17.4%	9,942	7.7%	9,626	-3.2%	9,385	-2.5%	10,591	12.9%	10,478	-1.1%	10,136	-3.3%	10,466	3.3%
14/15	Open	11,531	4.9%	11,000	-4.6%	11,566	5.1%	11,485	-0.7%	9,072	-21.0%	10,128	11.6%												
	Closed	11,255	7.5%	10,709	-4.9%	10,855	1.4%	11,465	5.6%	9,640	-15.9%	10,839	12.4%												

**TRENDS**

- **Cases Opened increased 11.6% between November 2014 and December 2014**  
13.0% increase in Elder cases  
8.5% increase in Dependent Adult cases
- **Cases Opened increased 12.9% between December 2013 and December 2014**  
14.1% increase in Elder cases  
10.4% increase in Dependent Adult cases
- **Cases Closed increased 12.4% between November 2014 and December 2014**  
13.2% increase in Elder cases  
10.8% increase in Dependent Adult cases
- **Cases Closed increased 9.0% between December 2013 and December 2014**  
9.0% increase in Elder cases  
9.1% increase in Dependent Adult cases