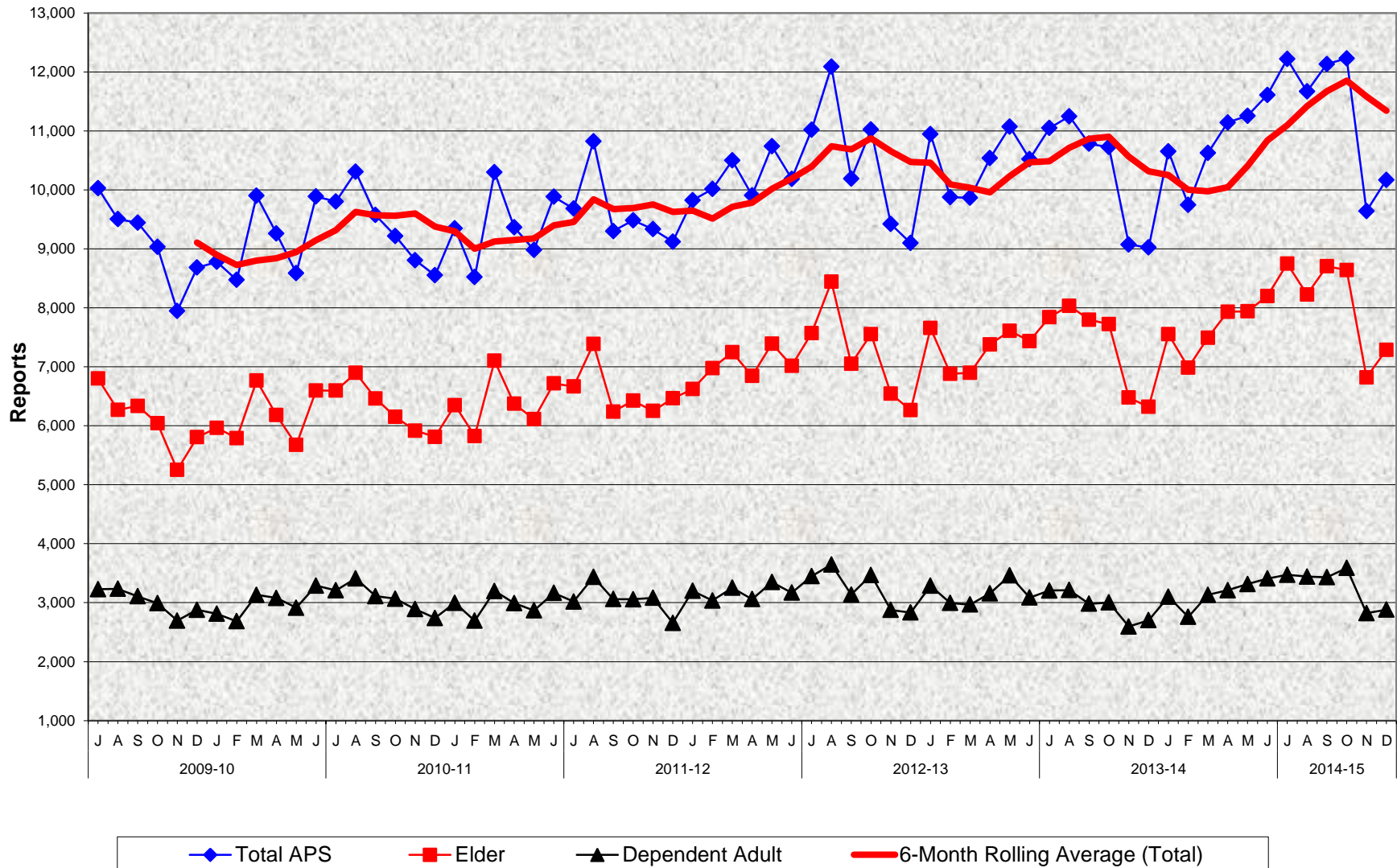


### Adult Protective Services (APS) Reports of Alleged Abuse Within APS Jurisdiction July 2009 - December 2014



**Adult Protective Services (APS)  
Reports of Alleged Abuse Within APS Jurisdiction  
July 2009 - December 2014**

**MONTHLY PERCENT CHANGE**

FY		Jul	% Chg	Aug	% Chg	Sept	% Chg	Oct	% Chg	Nov	% Chg	Dec	% Chg	Jan	% Chg	Feb	% Chg	Mar	% Chg	Apr	% Chg	May	% Chg	Jun	% Chg
09/10	Total	10,029		9,502	-5.3%	9,445	-0.6%	9,031	-4.4%	7,947	-12.0%	8,683	9.3%	8,778	1.1%	8,473	-3.5%	9,900	16.8%	9,260	-6.5%	8,588	-7.3%	9,887	15.1%
	Elder	6,801		6,268	-7.8%	6,336	1.1%	6,041	-4.7%	5,251	-13.1%	5,805	10.6%	5,966	2.8%	5,788	-3.0%	6,767	16.9%	6,181	-8.7%	5,674	-8.2%	6,597	16.3%
	Dep. Adult	3,228		3,234	0.2%	3,109	-3.9%	2,990	-3.8%	2,696	-9.8%	2,878	6.8%	2,812	-2.3%	2,685	-4.5%	3,133	16.7%	3,079	-1.7%	2,914	-5.4%	3,290	12.9%
10/11	Total	9,803	-0.8%	10,307	5.1%	9,572	-7.1%	9,217	-3.7%	8,806	-4.5%	8,552	-2.9%	9,347	9.3%	8,520	-8.8%	10,300	20.9%	9,365	-9.1%	8,982	-4.1%	9,883	10.0%
	Elder	6,595	0.0%	6,896	4.6%	6,462	-6.3%	6,150	-4.8%	5,917	-3.8%	5,812	-1.8%	6,350	9.3%	5,826	-8.3%	7,102	21.9%	6,373	-10.3%	6,114	-4.1%	6,719	9.9%
	Dep. Adult	3,208	-2.5%	3,411	6.3%	3,110	-8.8%	3,067	-1.4%	2,889	-5.8%	2,740	-5.2%	2,997	9.4%	2,694	-10.1%	3,198	18.7%	2,992	-6.4%	2,868	-4.1%	3,164	10.3%
11/12	Total	9,683	-2.0%	10,824	11.8%	9,301	-14.1%	9,483	2.0%	9,332	-1.6%	9,122	-2.3%	9,823	7.7%	10,014	1.9%	10,499	4.8%	9,906	-5.6%	10,740	8.4%	10,187	-5.1%
	Elder	6,665	-0.8%	7,389	10.9%	6,241	-15.5%	6,425	2.9%	6,251	-2.7%	6,465	3.4%	6,623	2.4%	6,978	5.4%	7,247	3.9%	6,845	-5.5%	7,392	8.0%	7,017	-5.1%
	Dep. Adult	3,018	-4.6%	3,435	13.8%	3,060	-10.9%	3,058	-0.1%	3,081	0.8%	2,657	-13.8%	3,200	20.4%	3,036	-5.1%	3,252	7.1%	3,061	-5.9%	3,348	9.4%	3,170	-5.3%
12/13	Total	11,018	8.2%	12,090	9.7%	10,189	-15.7%	11,023	8.2%	9,420	-14.5%	9,097	-3.4%	10,944	20.3%	9,876	-9.8%	9,865	-0.1%	10,538	6.8%	11,070	5.0%	10,523	-4.9%
	Elder	7,569	7.9%	8,442	11.5%	7,053	-16.5%	7,555	7.1%	6,543	-13.4%	6,265	-4.2%	7,657	22.2%	6,882	-10.1%	6,896	0.2%	7,379	7.0%	7,609	3.1%	7,437	-2.3%
	Dep. Adult	3,449	8.8%	3,648	5.8%	3,136	-14.0%	3,468	10.6%	2,877	-17.0%	2,832	-1.6%	3,287	16.1%	2,994	-8.9%	2,969	-0.8%	3,159	6.4%	3,461	9.6%	3,086	-10.8%
13/14	Total	11,049	5.0%	11,247	1.8%	10,781	-4.1%	10,726	-0.5%	9,074	-15.4%	9,023	-0.6%	10,653	18.1%	9,745	-8.5%	10,625	9.0%	11,143	4.9%	11,255	1.0%	11,610	3.2%
	Elder	7,843	5.5%	8,035	2.4%	7,799	-2.9%	7,723	-1.0%	6,478	-16.1%	6,320	-2.4%	7,551	19.5%	6,986	-7.5%	7,493	7.3%	7,933	5.9%	7,940	0.1%	8,201	3.3%
	Dep. Adult	3,206	3.9%	3,212	0.2%	2,982	-7.2%	3,003	0.7%	2,596	-13.6%	2,703	4.1%	3,102	14.8%	2,759	-11.1%	3,132	13.5%	3,210	2.5%	3,315	3.3%	3,409	2.8%
14/15	Total	12,219	5.2%	11,668	-4.5%	12,134	4.0%	12,229	0.8%	9,641	-21.2%	10,169	5.5%												
	Elder	8,747	6.7%	8,226	-6.0%	8,704	5.8%	8,640	-0.7%	6,818	-21.1%	7,287	6.9%												
	Dep. Adult	3,472	1.8%	3,442	-0.9%	3,430	-0.3%	3,589	4.6%	2,823	-21.3%	2,882	2.1%												

- **Reports of Alleged Abuse received within APS jurisdiction increased 5.5% between November 2014 and December 2014**  
6.9% increase in Elder reports  
2.1% increase in Dependent Adult reports
- **Reports of Alleged Abuse received within APS jurisdiction increased 12.7% between December 2013 and December 2014**  
15.3% increase in Elder reports  
6.6% increase in Dependent reports